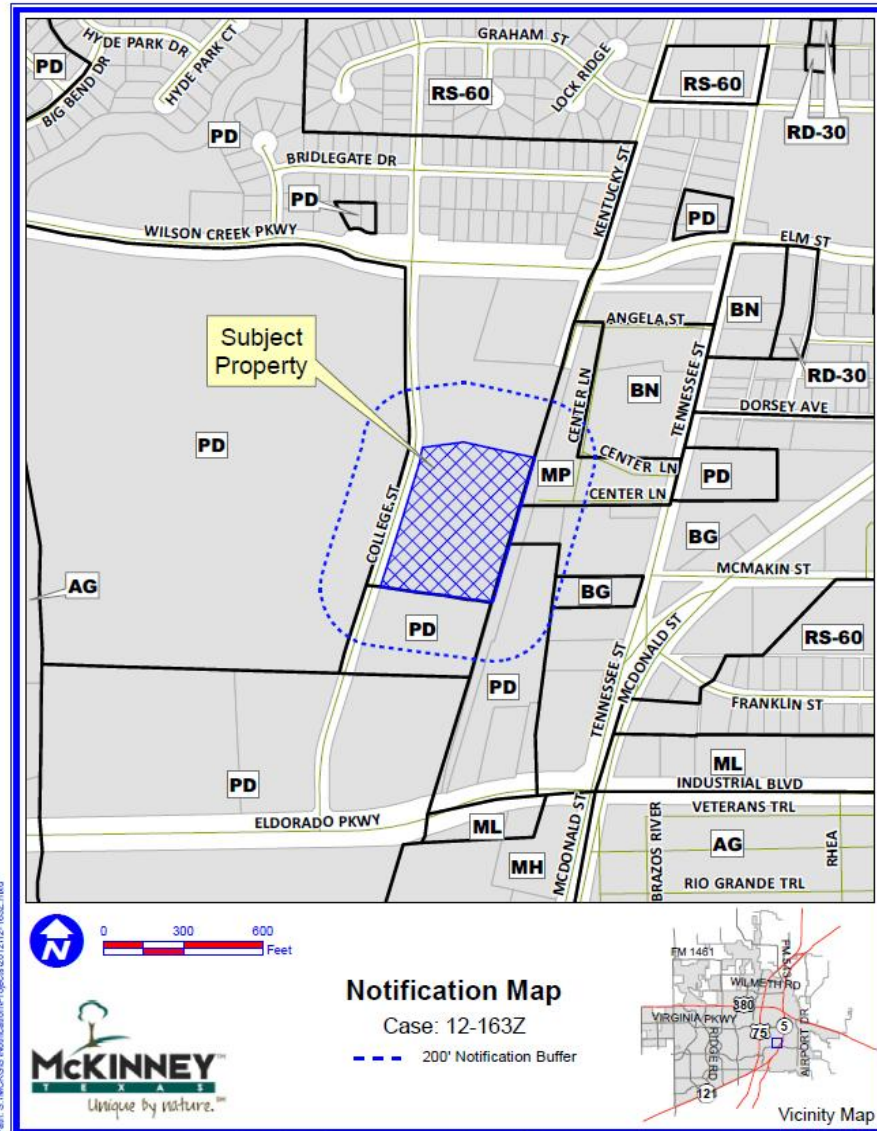


Case No. 12-163Z

Conduct a Public Hearing to Consider/Discuss/Act on the Request by Churchill Residential, on Behalf of Donald M. Motsenbocker, for a Request to Rezone Approximately 5.50 Acres from “PD” – Planned Development District to “PD” – Planned Development District, Generally to Modify the Development Standards, Located on the East Side of College Street and Approximately 875 Feet North of Eldorado Parkway

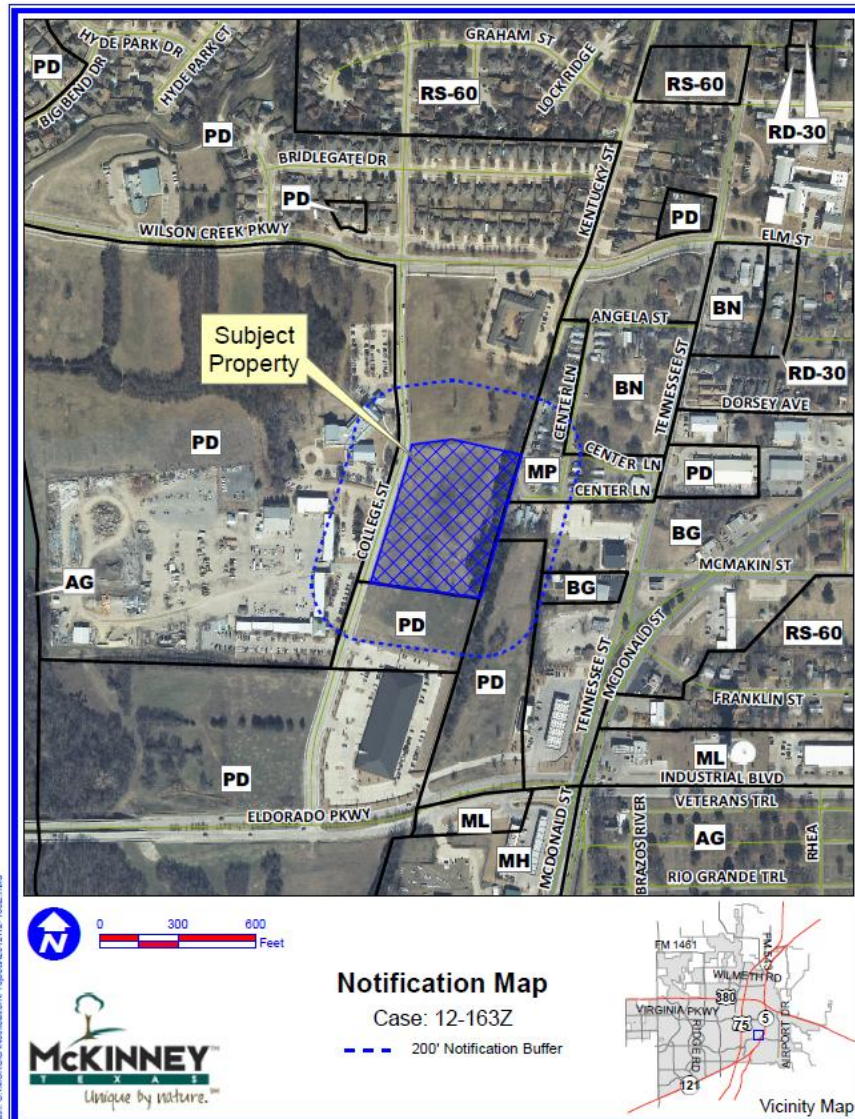
Location Map



Path: S:\MCKGBS Notification\Project\0012163Z.mxd

DISCLAIMER: This map and information contained in it were developed exclusively for use by the City of McKinney. Any use or reliance on this map by anyone else is at that party's risk and without liability to the City of McKinney, its officials or employees for any discrepancies, errors, or variances which may exist.

Aerial Exhibit

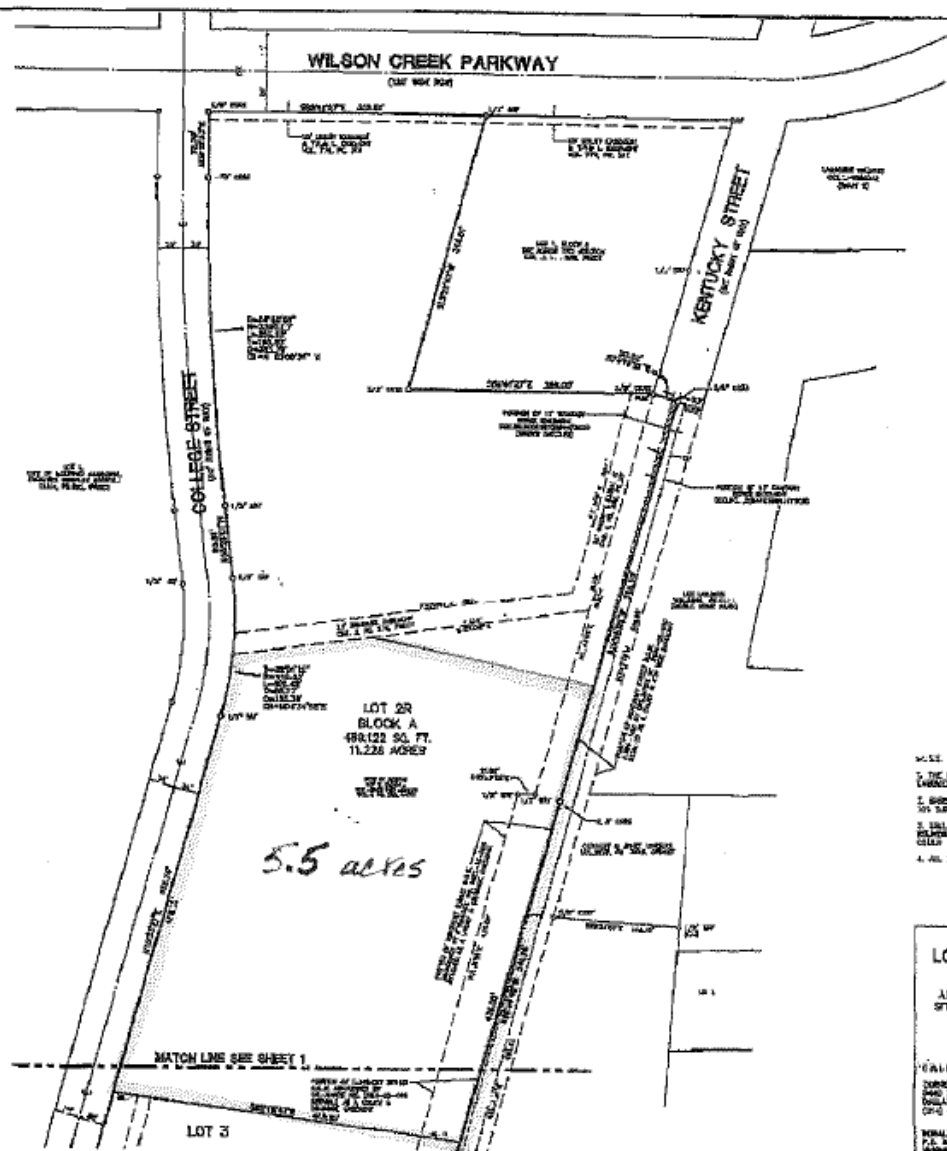
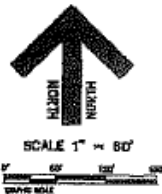


Path: S:\McKinney\Notification\Project\1212-163Z.mxd

DISCLAIMER: This map and information contained in it were developed exclusively for use by the City of McKinney. Any use or reliance on this map by anyone else is at that party's risk and without liability to the City of McKinney, its officials or employees for any discrepancies, errors, or variances which may exist.



1-800-760	
ARNEY	Paul, Sherrill Cathy, Chancy
BARNEY	David, Raymond Cathy, Chancy
BE	Jeffrey
BE	John
BE	John
BE	Jeffrey
BE	Jeffrey, Paul Sherrill, Chancy
BE	Paul & Paul
BE	William
BE	William
BE	Paul
BE	William
BE	Two Lamps
BE	Tracy
BE	Clara
BE	Sherrill, Paul, Raymond
BE	Sherrill, Paul, Raymond
BE	Sherrill, Paul
BE	Sherrill, Paul & Sherrill

[illegible]

MINOR REPLAT
**LOTs 2R AND 8, BLOCK A AND LOTS 1 AND 2,
 BLOCK B OF THE ACTION TWO ADDITION**
 AN ADDITION TO THE CITY OF WICHITNEY, DALLAS COUNTY, TEXAS,
 SITUATED IN THE SAMUEL MANSFIELD SURVEY, ABSTRACT NO. 338
 AND BEING A REPLAT OF
 LOT 2, BLOCK A OF THE ACTION TWO ADDITION
 CONTAINING 30.732 ACRES

CALL
DORRISBROOK 282, 13
2840 WAPSWORTH MILL ROAD, SUITE 400
DALLAS, TEXAS 75220
(214) 341-4000

RONALD M. WITTEBLOCHER
P.O. BOX 8008
DALLAS, TEXAS 75207

JDJR	SHAWNEE AND COUNTRY, INC.
SHAWNEE • LAND PLANNING • DEVELOPMENT	SALES
1-27 Shawnee Blvd. • Shawnee, MO 64151	
Tel. (816) 231-1100 Fax (816) 231-1101	

Staff Recommendation

Staff recommends denial of the rezoning request as outlined in the Staff Report.