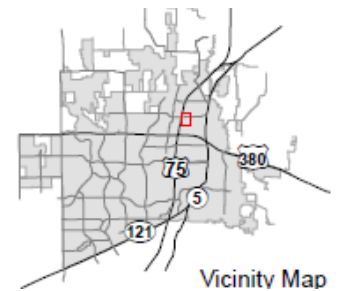
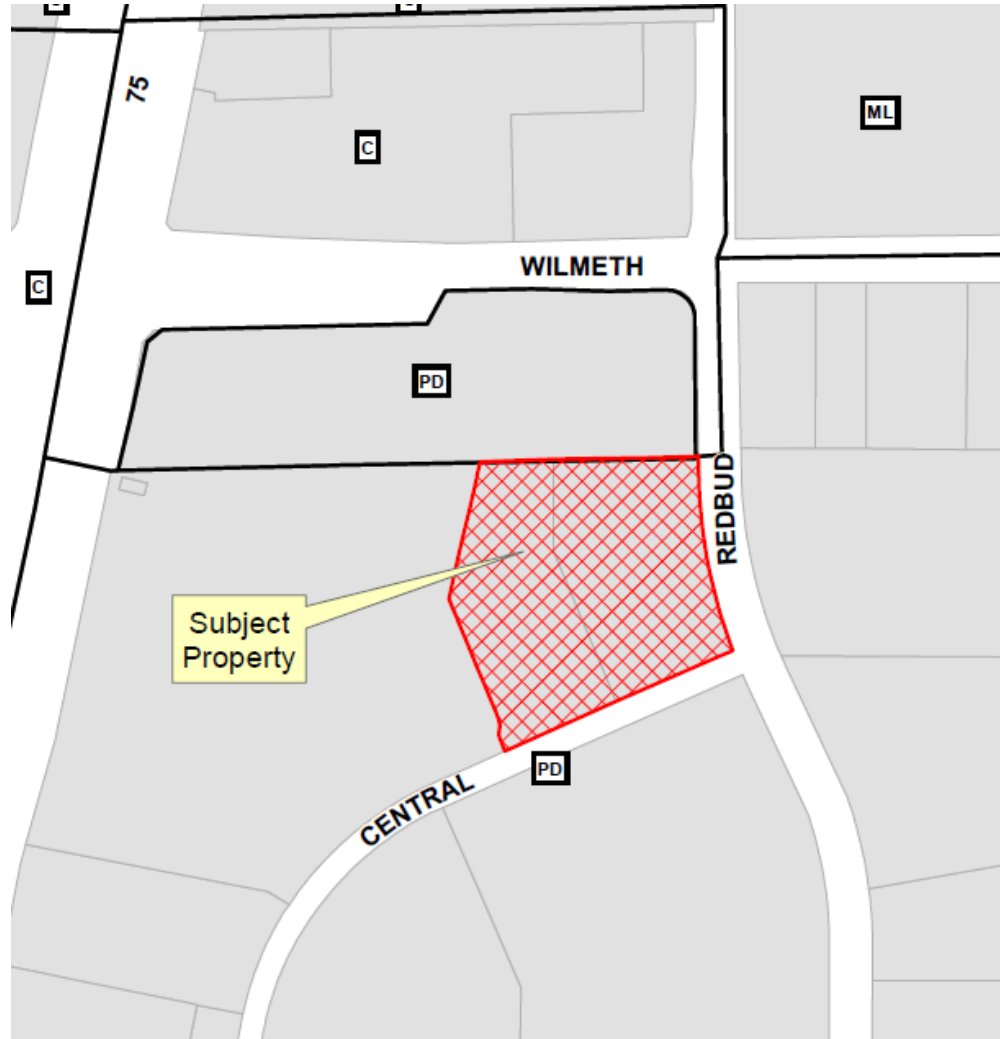


Bray Central Two Addition
Minor Replat
16-363MRP



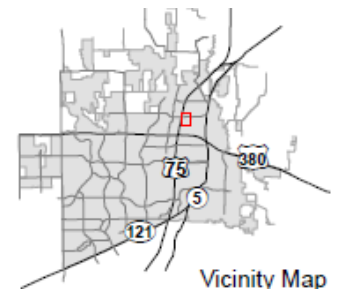
- MONEY MAGAZINE 2014 -

Location Map

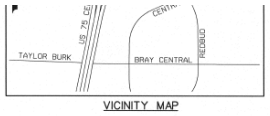
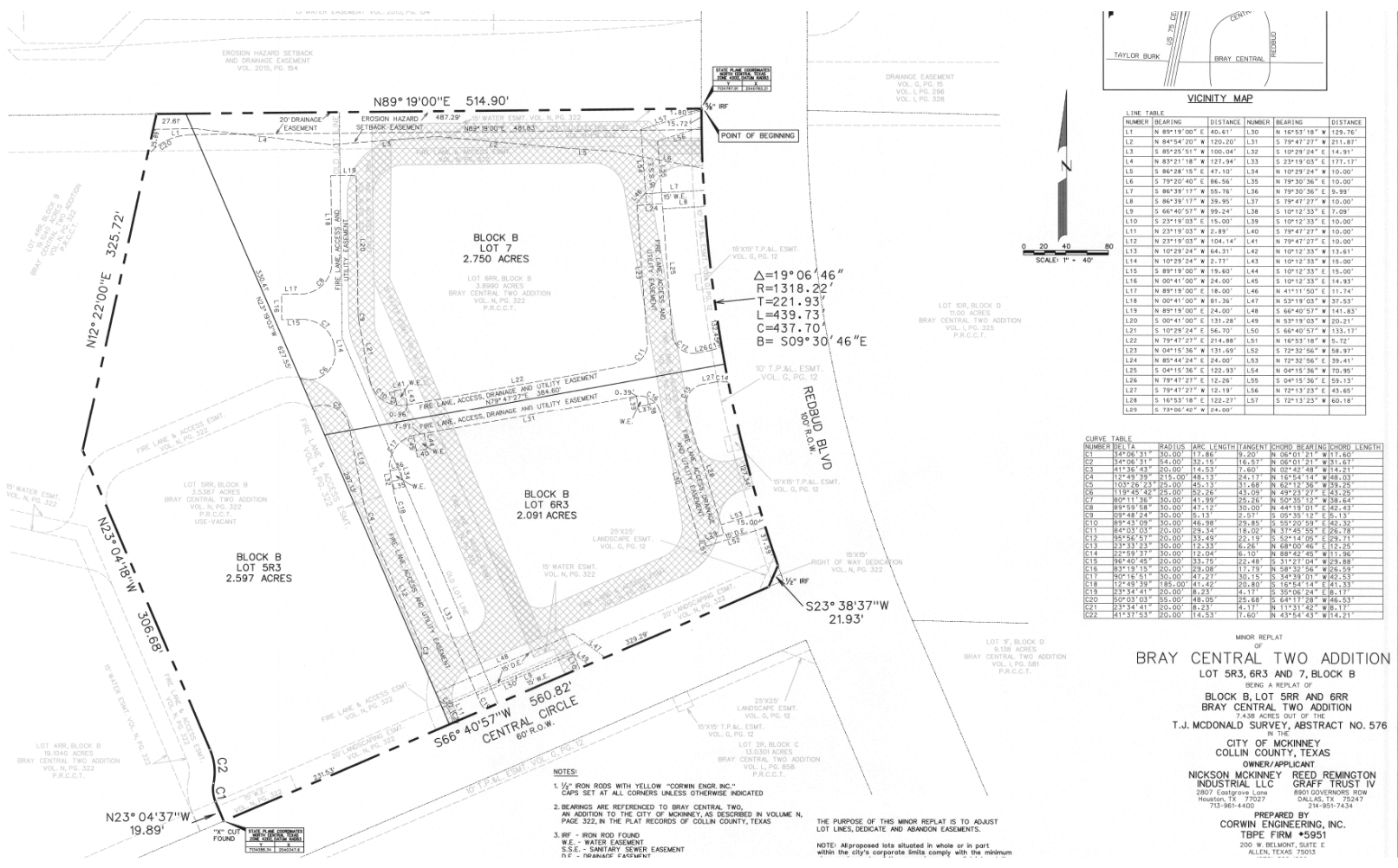


Vicinity Map

Aerial Exhibit



Proposed Minor Replat



LINE TABLE

LINE NUMBER	BEARING	DISTANCE	LINE NUMBER	BEARING	DISTANCE
L1	N 89°19'00" E	405.61'	L30	N 16°53'18" W	129.76'
L2	N 84°54'00" W	150.00'	L31	S 79°47'27" W	251.87'
L3	S 85°25'51" W	100.04'	L32	S 10°29'24" E	14.91'
L4	N 83°21'18" W	127.34'	L33	S 23°19'03" E	177.17'
L5	S 84°28'15" E	471.10'	L34	N 10°29'24" W	16.00'
L6	S 79°20'40" E	86.56'	L35	N 79°30'36" E	10.00'
L7	S 86°33'17" W	55.76'	L36	N 79°30'36" E	9.99'
L8	S 86°39'17" W	39.95'	L37	S 79°47'27" W	10.00'
L9	S 66°40'57" W	59.24'	L38	S 10°12'33" E	12.00'
L10	S 23°19'03" E	15.00'	L39	S 10°12'33" E	10.00'
L11	N 23°19'03" W	2.89'	L40	S 79°47'27" W	10.00'
L12	N 23°19'03" W	104.14'	L41	N 79°47'27" E	10.00'
L13	N 10°29'24" W	64.31'	L42	N 10°12'33" W	13.61'
L14	N 10°29'24" W	2.77'	L43	N 10°12'33" W	13.00'
L15	S 89°19'00" W	19.60'	L44	S 10°12'33" E	15.00'
L16	N 00°41'00" W	24.00'	L45	S 10°12'33" E	14.93'
L17	N 89°19'00" E	18.00'	L46	N 11°15'00" E	11.74'
L18	N 00°41'00" W	81.36'	L47	N 53°19'03" W	37.53'
L19	N 89°19'00" E	24.00'	L48	S 66°40'57" W	141.83'
L20	S 00°41'00" E	131.28'	L49	N 53°19'03" W	20.21'
L21	S 10°29'24" E	56.70'	L50	S 66°40'57" W	133.17'
L22	N 79°47'27" E	214.88'	L51	N 16°53'18" W	5.72'
L23	N 04°15'36" W	131.69'	L52	S 72°32'56" E	39.99'
L24	N 85°44'24" E	24.00'	L53	N 72°32'56" E	39.41'
L25	S 04°15'36" E	122.93'	L54	N 04°15'36" W	70.95'
L26	N 79°47'27" E	152.26'	L55	S 04°15'36" E	55.13'
L27	S 79°47'27" W	12.19'	L56	N 12°13'03" E	43.45'
L28	S 16°53'18" E	122.27'	L57	S 12°13'03" E	60.18'
L29	S 79°06'40" W	24.00'			

CURVE TABLE

CURVE NUMBER	BEARING	RADIUS	ARC LENGTH	ANGULAR CHORD	CHORD BEARING	CHORD LENGTH
C01	S 14°08'31" W	350.00'	117.86'	8.20'	N 06°01'21" W	111.60'
C02	S 14°08'31" W	350.00'	132.19'	16.37'	N 05°01'51" W	131.41'
C03	S 14°08'31" W	350.00'	174.53'	7.60'	N 02°42'48" W	174.21'
C04	S 14°08'31" W	350.00'	48.13'	4.73'	N 12°51'56" W	48.03'
C05	S 14°08'31" W	350.00'	48.13'	4.73'	N 89°19'00" W	48.03'
C06	S 14°08'31" W	350.00'	50.26'	45.09'	S 69°23'27" E	43.25'
C07	S 14°08'31" W	350.00'	41.99'	25.25'	S 50°51'56" E	38.44'
C08	S 14°08'31" W	350.00'	41.12'	30.00'	S 44°15'01" E	42.43'
C09	S 14°08'31" W	350.00'	5.13'	4.91'	N 05°58'12" E	5.13'
C10	S 14°08'31" W	350.00'	46.98'	29.85'	S 55°20'59" E	42.32'
C11	S 14°08'31" W	350.00'	29.14'	18.02'	N 11°45'45" E	28.78'
C12	S 14°08'31" W	350.00'	31.49'	22.19'	S 12°01'04" E	29.71'
C13	S 14°08'31" W	350.00'	12.23'	6.26'	N 08°48'48" E	12.23'
C14	S 14°08'31" W	350.00'	12.23'	6.26'	N 88°48'48" E	12.23'
C15	S 14°08'31" W	350.00'	33.75'	22.48'	S 31°27'04" E	32.88'
C16	S 14°08'31" W	350.00'	20.06'	11.79'	N 26°05'06" E	20.06'
C17	S 14°08'31" W	350.00'	41.23'	30.15'	S 34°39'01" W	40.53'
C18	S 14°08'31" W	350.00'	41.42'	42.80'	S 44°15'01" E	41.23'
C19	S 14°08'31" W	350.00'	8.23'	4.17'	S 35°08'24" E	8.17'
C20	S 14°08'31" W	350.00'	48.09'	48.09'	S 44°15'01" E	48.09'
C21	S 14°08'31" W	350.00'	8.23'	4.17'	N 11°31'42" W	8.17'
C22	S 14°08'31" W	350.00'	14.53'	7.60'	N 43°54'43" W	14.21'

- NOTES:
- 1/2" IRON RODS WITH YELLOW "CORWIN ENGR. INC." CAPS SET AT ALL CORNERS UNLESS OTHERWISE INDICATED
 - BEARINGS ARE REFERENCED TO BRAY CENTRAL TWO ADDITION TO THE CITY OF MCKINNEY, AS DESCRIBED IN VOLUME N, PAGE 322 IN THE PLAT RECORDS OF COLLIN COUNTY, TEXAS
 - IRF - IRON ROD FOUND
W.E. - WATER EASEMENT
S.S.E. - SANITARY SEWER EASEMENT
F.V. - FIRELANE FACILITY

THE PURPOSE OF THIS MINOR REPLAT IS TO ADJUST LOT LINES, DEDICATE AND ABANDON EASEMENTS.
NOTE: All proposed lots situated in whole or in part within the city's corporate limits comply with the minimum

MINOR REPLAT OF
BRAY CENTRAL TWO ADDITION
LOT 5R3, 6R3 AND 7, BLOCK B
BEING A REPLAT OF
BLOCK B, LOT 5R3 AND 6R3
BRAY CENTRAL TWO ADDITION
7.438 ACRES OUT OF THE
T.J. MCDONALD SURVEY, ABSTRACT NO. 576
IN THE
CITY OF MCKINNEY
COLLIN COUNTY, TEXAS
OWNER/APPLICANT
**NICKSON MCKINNEY REED REMINGTON
INDUSTRIAL LLC GRAFF TRUST IV**
2807 Cottingham Lane
Houston, TX 77027
313-861-4400
PREPARED BY
CORWIN ENGINEERING, INC.
TYPE FIRM #5951
200 W. BELMONT, SUITE E
ALLEN, TEXAS 75003

