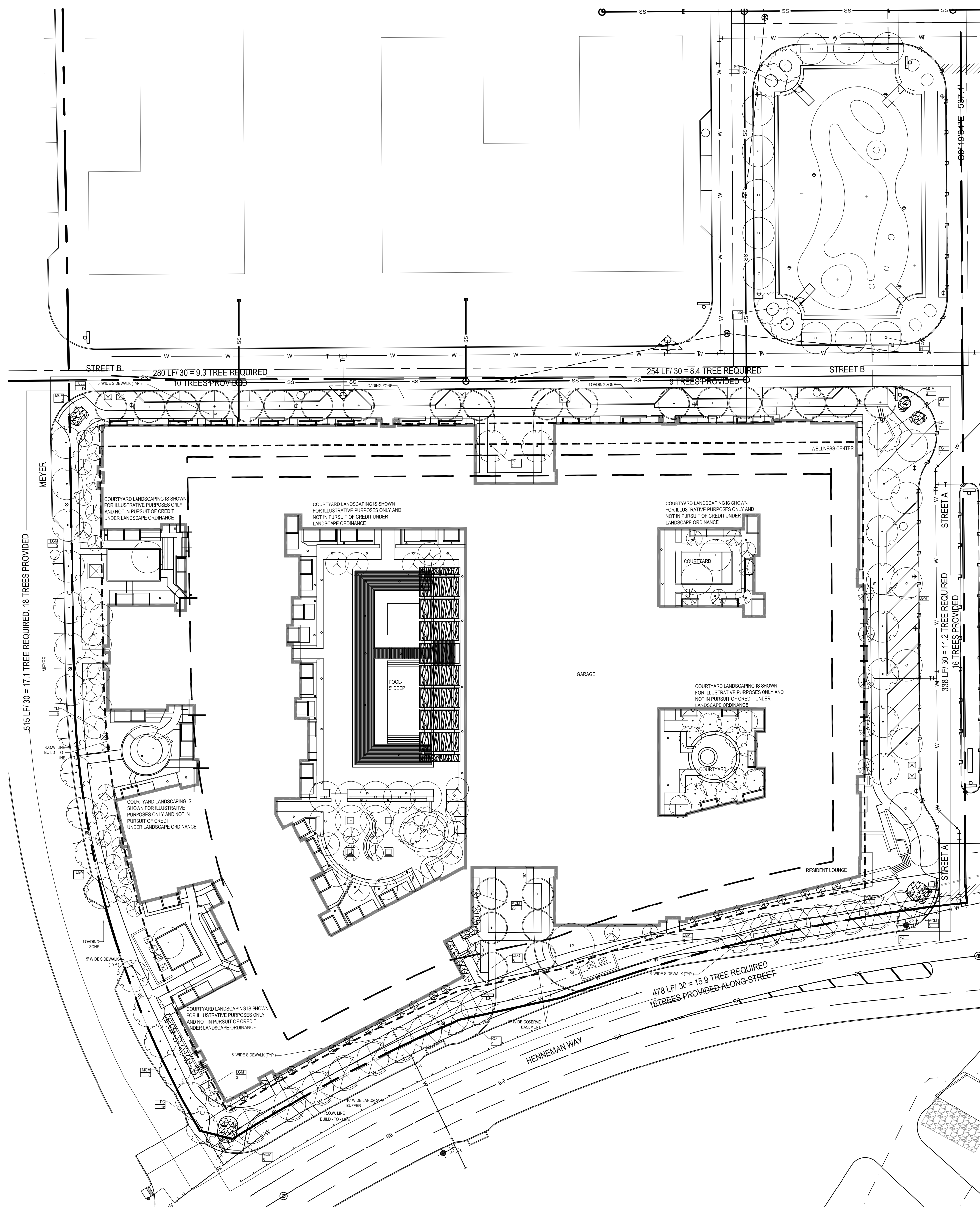


NOTE: ALL LANDSCAPE AREAS SHALL BE PROVIDED WITH AN AUTOMATIC UNDERGROUND IRRIGATION SYSTEM WITH RAIN AND FREEZE SENSORS AND EVAPORATION (ET) WEATHER BASED CONTROLLER AND SAID IRRIGATION SYSTEM SHALL BE DESIGNED BY A QUALIFIED PROFESSIONAL AND INSTALLED BY A LICENSED IRRIGATOR



01 PLANTING PLAN

SCALE: 1 TO 40

MCKINNEY SITE PLAN SUBMITTAL PLANT SCHEDULE

| QTY. | SYM. | SHADE TREES | | |
|------|------|-------------------------|---------------------------------|---|
| 16 | RO | Red Oak | Quercus Shumardii | 4" cal.- 200 gal. or B+B 12'-14' ht. 6'- 8' SP. 7' clear |
| 18 | LO | Live Oak | Quercus Virginiana | 4" cal.- 200 gal. or B+B 12'-14' ht. 8'-10' sp. 7' clear |
| 25 | CLO | Cathedral Live Oak | Quercus Virginiana 'Cathedral' | 4" cal.- 200 gal. or B+B 12'-14' ht. 8'-10' sp. 7' clear |
| 27 | PC | Pond Cypress | Taxodium Ascendens | 4" cal.-100 gal. or B+B 14'-16' ht. 6'-7' sp. 7' clear |
| 5 | SG | Princeton, Sentry Ginko | Ginko Biloba, Princeton Sentry | 4" cal. B+B 12'-14' ht. 5'-6' sp. 7' clear |
| 9 | TM | Thornless Mesquite | Prosopis glandulosa 'Thornless' | 3" cal.-65 gal or B+B 10'-12' ht. 5'-6' sp. |
| 29 | LGM | Little Gem Magnolia | Magnolia 'Little Gem' | 3" cal.- 65 gal or B+B 10'-12' ht. 4'-5' sp. |
| 52 | MCM | Muskogee Crape Myrtle | Lagerstroemia Indica 'Muskogee' | 4" total cal. multitrunk- 45 gal. or B+B 12'-14' ht.8'-10' sp |

The Contractor shall verify water restrictions within the City of McKinney at time of planting. Should water restrictions not allow hydromulch, hydroseeding, or sprigging (Stage 3 and Stage 4 water restrictions), an approved alternate for grassing shall be installed

LANDSCAPE TABULATIONS

| SITE DATA: | | |
|-------------------------------|-----------------------|----------------------|
| SITE AREA- | 5.02AC | 218,957 SF |
| LANDSCAPE AREA: | REQUIRED 10% (21,896) | PROVIDED 25,959(11%) |
| STREETYARD AREA: | REQUIRED 15% (32,843) | PROVIDED 59,318(27%) |
| CALIPER INCHES FOR MITIGATION | REQUIRED 74 | PROVIDED 686 |



2916 Woodside St.
Dallas, Texas 75204
P: 817-247-8226

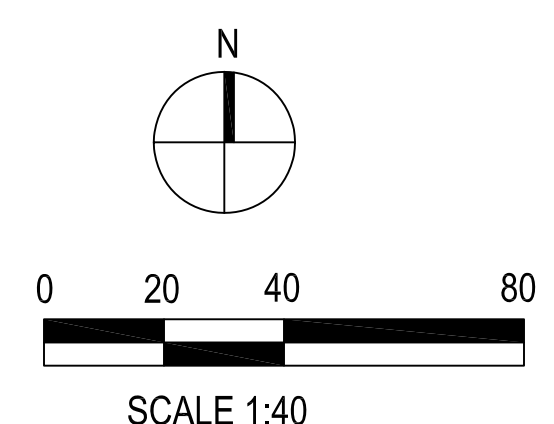


Parkside at Craig Ranch
Phase II
McKinney, Texas
Site Plan Submittal



Project Number: 10-010.0
Drawn By: BL
Site Plan Submittal: 5.12.2014

| Revision | Date |
|-----------------|---------|
| 1 CITY COMMENTS | 5-27-14 |
| 2 CITY COMMENTS | 6-9-14 |
| 3 CITY COMMENTS | 6-13-14 |



LANDSCAPE PLAN

LP 10.00

RECEIVED
By Planning Department at 8:19 am, Jun 13, 2014