

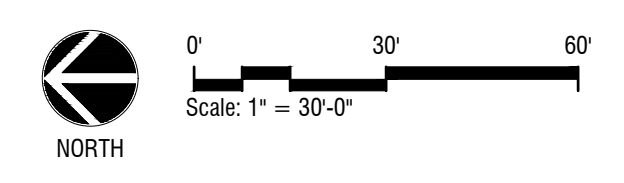
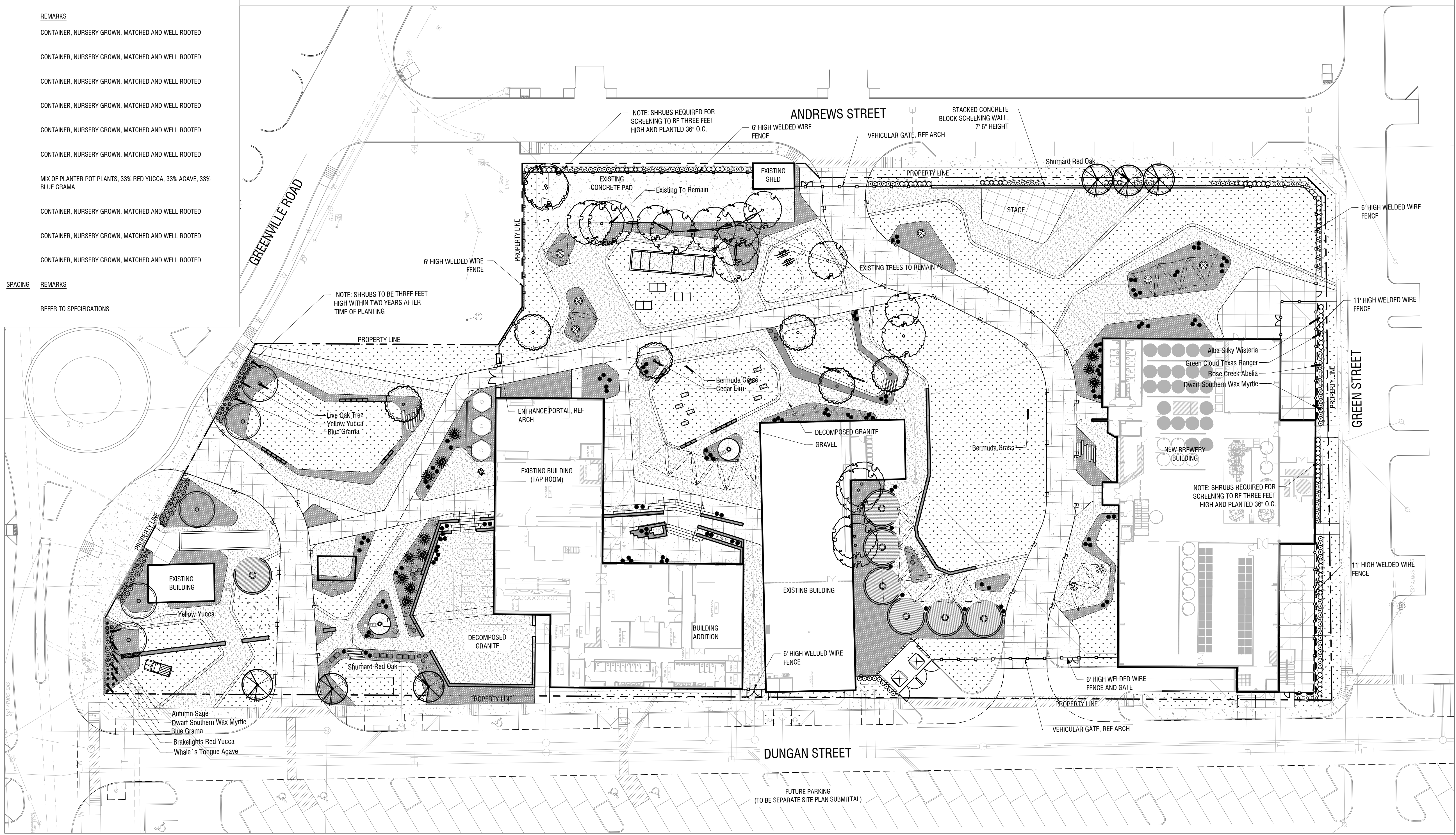
| PLANT SCHEDULE | | | | | |
|----------------|--|----------|---------------|----------|---|
| TREES | COMMON / BOTANICAL NAME | CONT. | SIZE | SPACING | REMARKS |
| | Cedar Elm / <i>Ulmus crassifolia</i> | 4" cal | 8'-10' | | B&B, NURSERY GROWN, MATCHED, FULL, WELL-BRANCHED, STRONG CENTRAL LEADER, 7' CLEAR AT SIDEWALKS, 14' CLEAR AT FIRELANE |
| | Existing To Remain / Existing Tree | Existing | Varies | | B&B, NURSERY GROWN, MATCHED, FULL, WELL-BRANCHED, STRONG CENTRAL LEADER |
| | Live Oak Tree / <i>Quercus virginiana</i> | 4" cal | 8'-10' | | B&B, NURSERY GROWN, MATCHED, FULL, WELL-BRANCHED, STRONG CENTRAL LEADER, 7' CLEAR AT SIDEWALKS, 14' CLEAR AT FIRELANE |
| | Shumard Red Oak / <i>Quercus shumardii</i> | 4" cal | 8'-10' | | B&B, NURSERY GROWN, MATCHED, FULL, WELL-BRANCHED, STRONG CENTRAL LEADER, 7' CLEAR AT SIDEWALKS, 14' CLEAR AT FIRELANE |
| SHRUBS | COMMON / BOTANICAL NAME | CONT. | SIZE | SPACING | REMARKS |
| | Alba Silky Wisteria / <i>Wisteria brachybotrys</i> 'Alba' | 1 gal | 9" h x 9" w | As shown | CONTAINER, NURSERY GROWN, MATCHED AND WELL ROOTED |
| | Autumn Sage / <i>Salvia greggii</i> | 3 gal | 12" h x 18" w | 24" OC | CONTAINER, NURSERY GROWN, MATCHED AND WELL ROOTED |
| | Blue Grama / <i>Bouteloua gracilis</i> 'Blonde Ambition' | 3 gal | 18" h x 18" w | 24" OC | CONTAINER, NURSERY GROWN, MATCHED AND WELL ROOTED |
| | Brakelights Red Yucca / <i>Hesperaloe parviflora</i> 'Brakelights' TM | 3 gal | 12" h x 12" w | 18" OC | CONTAINER, NURSERY GROWN, MATCHED AND WELL ROOTED |
| | Dwarf Southern Wax Myrtle / <i>Myrica pusilla</i> | 5 gal | 36" h x 24" w | 36" OC | CONTAINER, NURSERY GROWN, MATCHED AND WELL ROOTED |
| | Green Cloud Texas Ranger / <i>Leucophyllum frutescens</i> 'Green Cloud' TM | 5 gal | 36" h x 24" w | 36" OC | CONTAINER, NURSERY GROWN, MATCHED AND WELL ROOTED |
| | Planter Pot Plants / Planter Pot Plants | 5 gal | 18" h x 18" w | IN POTS | MIX OF PLANTER POT PLANTS, 33% RED YUCCA, 33% AGAVE, 33% BLUE GRAMA |
| | Rose Creek Abelia / <i>Abelia x</i> 'Rose Creek' | 5 gal | 36" h x 24" w | 36" OC | CONTAINER, NURSERY GROWN, MATCHED AND WELL ROOTED |
| | Whale's Tongue Agave / <i>Agave ovatifolia</i> 'Frosty Blue' | 3 gal | 18" h x 18" w | IN POTS | CONTAINER, NURSERY GROWN, MATCHED AND WELL ROOTED |
| | Yellow Yucca / <i>Hesperaloe parviflora</i> 'Yellow' | 3 gal | 18" h x 18" w | 24" OC | CONTAINER, NURSERY GROWN, MATCHED AND WELL ROOTED |
| GROUND COVERS | COMMON / BOTANICAL NAME | CONT. | SIZE | SPACING | REMARKS |
| | Bermuda Grass / <i>Cynodon dactylon</i> | sod | | | REFER TO SPECIFICATIONS |

PLANTING NOTES:

- LANDSCAPE CONTRACTOR SHALL BE RESPONSIBLE FOR VERIFYING THE LOCATION OF ALL UNDERGROUND UTILITIES, PIPES, STRUCTURES, AND LINE RUNS IN THE FIELD PRIOR TO THE INSTALLATION OF ANY PLANT MATERIAL.
- IT IS THE RESPONSIBILITY OF THE CONTRACTOR TO ADVISE THE LANDSCAPE ARCHITECT OF ANY CONDITION FOUND ON THE SITE WHICH PROHIBITS INSTALLATION AS SHOWN ON THESE DRAWINGS.
- ALL PLANT MATERIAL SHALL BE MAINTAINED IN A HEALTHY AND GROWING CONDITION AND MUST BE REPLACED WITH PLANT MATERIAL OF SAME VARIETY AND SIZE IF DAMAGED, DESTROYED, OR REMOVED.
- LANDSCAPE CONTRACTOR SHALL BE RESPONSIBLE FOR FINE GRADING AND REMOVAL OF DEBRIS PRIOR TO PLANTING IN ALL AREAS.
- FINAL FINISH GRADING SHALL BE REVIEWED BY THE LANDSCAPE ARCHITECT. LANDSCAPE CONTRACTOR SHALL BE RESPONSIBLE FOR ANY ADDITIONAL TOPSOIL REQUIRED TO CREATE A SMOOTH CONDITION PRIOR TO PLANTING.
- ALL PLANT QUANTITIES LISTED ARE FOR INFORMATION ONLY. IT IS THE CONTRACTOR'S RESPONSIBILITY TO PROVIDE FULL COVERAGE IN ALL PLANTING AREAS AS SPECIFIED IN THE PLANT SCHEDULE AND VERIFY ALL QUANTITIES.
- LANDSCAPE CONTRACTOR TO PROVIDE STEEL EDGING (REFER TO MATERIALS PAGE) BETWEEN ALL PLANTING BEDS AND LAWN AREAS.
- ALL PLANT MATERIAL SHALL CONFORM TO THE SPECIFICATIONS AND SIZES GIVEN IN THE PLANT LIST AND SHALL BE NURSERY GROWN IN ACCORDANCE WITH THE AMERICAN STANDARD FOR NURSERY STOCK. LATEST EDITION AMERICAN ASSOCIATION OF NURSERYMEN STANDARDS. ANY PLANT SUBSTITUTION SHALL BE APPROVED BY LANDSCAPE ARCHITECT PRIOR TO PURCHASE.
- LANDSCAPE CONTRACTOR IS RESPONSIBLE FOR ANY COORDINATION WITH OTHER CONTRACTORS ON SITE AS REQUIRED TO ACCOMPLISH ALL PLANTING OPERATIONS.
- ALL NEW PLANTING AREAS TO BE AMENDED PER SPECIFICATIONS.
- ANY PLANT MATERIAL THAT DOES NOT SURVIVE SHALL BE REPLACED WITH AN EQUIVALENT SIZE AND SPECIES WITHIN THIRTY (30) DAYS.
- PLANT MATERIAL SHALL BE PRUNED AS NECESSARY TO CONTROL SIZE BUT NOT TO DISRUPT THE NATURAL GROWTH PATTERN OR CHARACTERISTIC FORM OF THE PLANT EXCEPT AS NECESSARY TO ACHIEVE HEIGHT CLEARANCE FOR VISIBILITY AND PEDESTRIAN PASSAGE OR TO ACHIEVE A CONTINUOUS OPAQUE HEDGE IF REQUIRED.
- LANDSCAPED AREAS SHALL BE KEPT FREE OF TRASH, WEEDS, DEBRIS, AND DEAD PLANT MATERIAL.
- ALL LIME STABILIZED SOIL & INORGANIC SELECT FILL FOR BUILDING SHOULD BE REMOVED FROM PLANTING AREAS TO A DEPTH OF 24" & REPLACED WITH ORGANIC IMPORTED TOPSOIL FILL.
- CONTRACTOR TO PROVIDE SUBMITTAL WITH PHOTOS OF ALL PLANT MATERIAL FOR APPROVAL.
- THE CONTRACTOR SHALL VERIFY WATER RESTRICTIONS WITHIN THE CITY OF MCKINNEY AT TIME OF PLANTING. SHOULD WATER RESTRICTIONS NOT ALLOW HYDRO-MULCH, HYDRO-SEEDING, OR SPRIGGING (STAGE 3 AND STAGE 4 WATER RESTRICTIONS), AN APPROVED ALTERNATIVE FOR GRASSING SHALL BE INSTALLED.

IRRIGATION NOTES:

- AN UNDERGROUND AUTOMATIC IRRIGATION SYSTEM SHALL BE PROVIDED FOR ALL PLANTING AREAS. OVER SPRAY ON STREETS AND WALKS IS PROHIBITED.
- IRRIGATION SYSTEMS SHALL BE MAINTAINED AND REPLACED AS NECESSARY.
- ALL PLANTING AREAS TO BE FULLY IRRIGATED.
- IRRIGATION SYSTEM TO HAVE A FULLY AUTOMATED CONTROL SYSTEM.
- IRRIGATION SYSTEM TO HAVE RAIN AND FREEZE SENSORS.
- ANY EXISTING PLANTING DAMAGED DURING CONSTRUCTION IS TO BE REPLACED AT NO COST THE OWNER.
- IRRIGATION SYSTEM TO BE DESIGNED BY A QUALIFIED PROFESSIONAL AND INSTALLED BY A LICENSED IRRIGATOR.



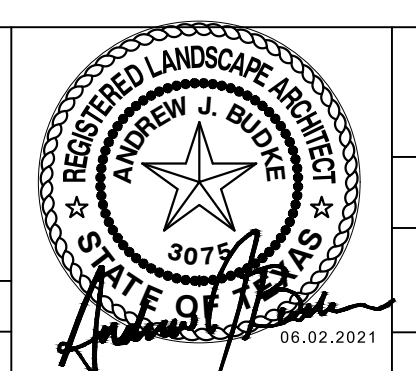
Code Planting Plan | **A**
Scale: 1" = 30'-0"

| Issue Dates: | Revisions: | Date: |
|--------------|------------|-------|
| 1 | 2/08/2021 | 1 |
| 2 | 3/24/2021 | 2 |
| 3 | 4/30/2021 | 3 |
| 4 | 6/02/2021 | 4 |
| 5 | | 5 |
| 6 | | 6 |

Kimley»Horn
260 EAST DAVIS STREET
SUITE 100
MCKINNEY, TX 75069 | 469.301.2580

CROSS ENGINEERING CONSULTANTS
1720 W. Virginia Street
972.562.4409
McKinney, Texas 75069
Texas P.E. Firm No. F-5935

Drawn By: HD
Checked By: AB
Scale:



CODE PLANTING PLAN
TUPP'S BREWERY
Blocks 1 & 2 Andrews Addition
William Davis Survey, Abstract No. 248
City of McKinney, Texas

Sheet No.
L1.02
Project No.
20040

TUPP'S BREWERY