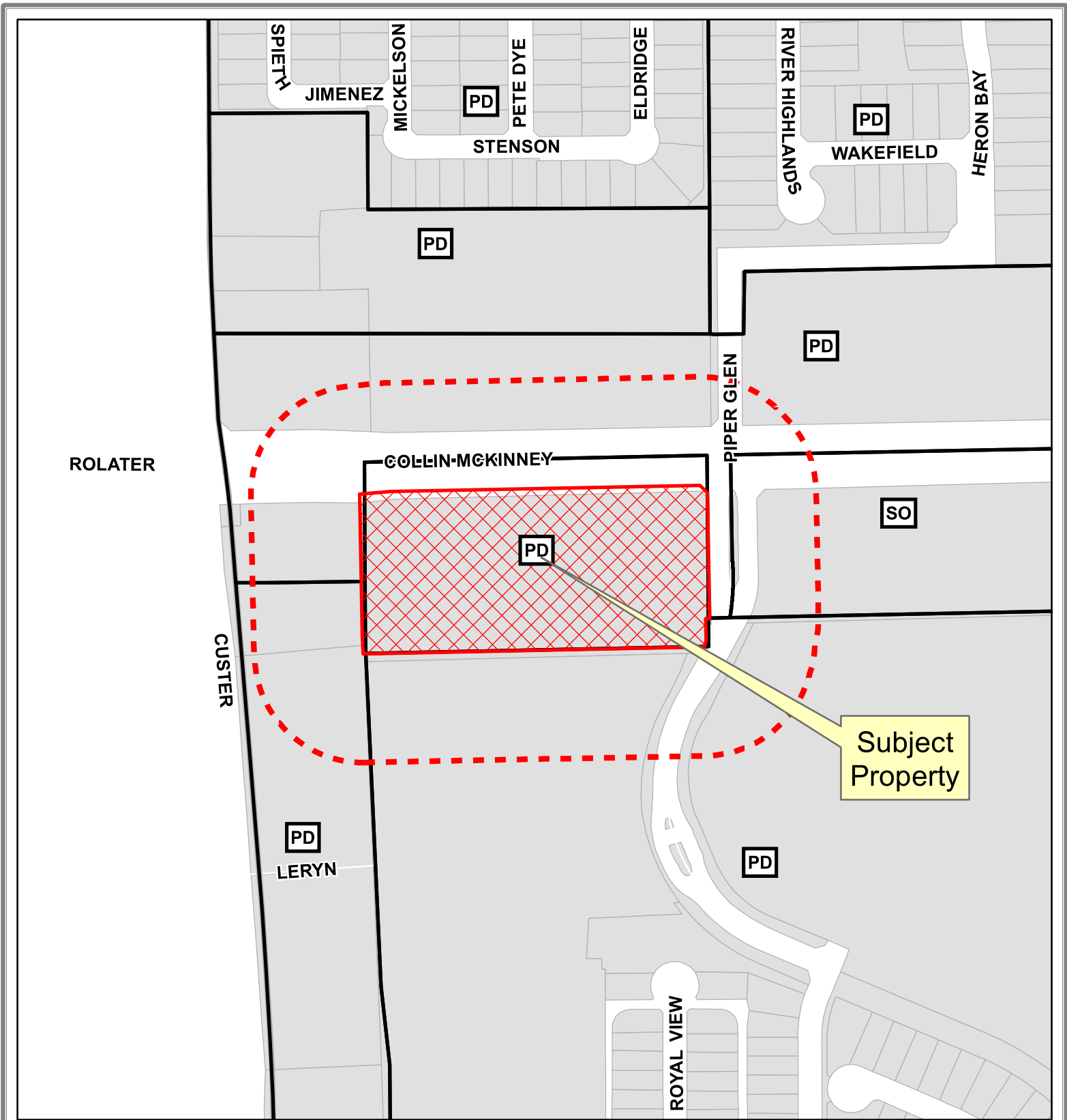


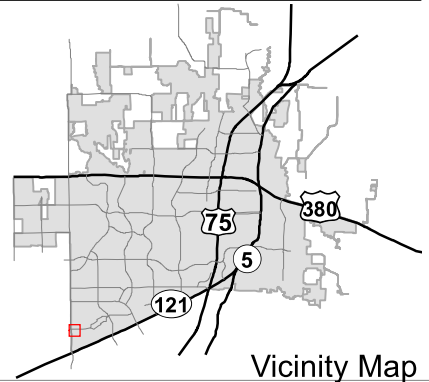
EXHIBIT A



Notification Map

Case: 17-099SUP

--- 200' Buffer

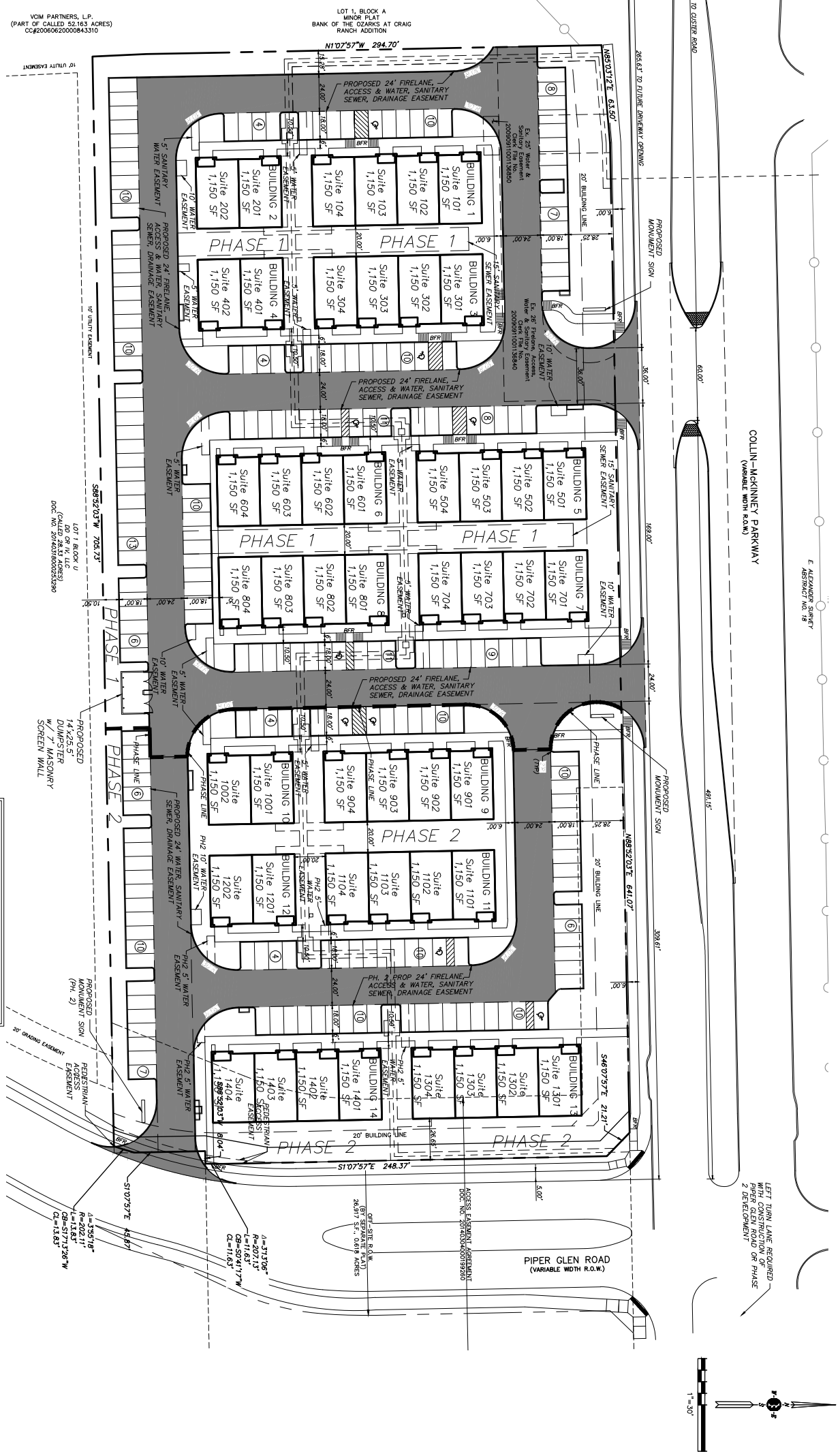


Vicinity Map

DISCLAIMER: This map and information contained in it were developed exclusively for use by the City of McKinney. Any use or reliance on this map by anyone else is at that party's risk and without liability to the City of McKinney, its officials or employees for any discrepancies, errors, or variances which may exist.

EXHIBIT B

N:\BC14053 Craig Ranch Office - CloudIoT\05 CAD Files\BC14053 SITE PLAN.dwg-SITE Plotted Apr 27, 2017 at 8:38am by kbennett | Last Saved by: kbennett



PHASE 1 SUMMARY CHART

LOT AREA:	332 AC - 144,240 SF
BUILDING SQUARE FOOTAGE:	32,000 SF (14 SUITES)
PROFESSIONAL:	16,000 SF (7.5 SUITES)
MEDICAL:	14,000 SF (7.5 SUITES)
PERSONAL SERVICES:	1,000 SF (1 SUITE)
LOT COVERAGE:	22.2%
FLOOR AREA RATIO:	0.22
TOTAL PARKING SPACES:	16,000/400 = 40 SPACES
PROFESSIONAL:	14,000/200 = 70 SPACES
MEDICAL:	14,000/200 = 70 SPACES
PERSONAL SERVICES:	1,000/200 = 5 SPACES
TOTAL REQUIRED:	140 SPACES
TOTAL PROVIDED:	140 SPACES

PHASE 2 SUMMARY CHART

LOT AREA:	218 AC - 88,320 SF
BUILDING SQUARE FOOTAGE:	32,000 SF (14 SUITES)
PROFESSIONAL:	11,500 SF (7.5 SUITES)
MEDICAL:	11,500 SF (7.5 SUITES)
PERSONAL SERVICES:	2,000 SF (2 SUITES)
LOT COVERAGE:	24.1%
FLOOR AREA RATIO:	0.241
TOTAL PARKING SPACES:	11,500/400 = 29 SPACES
PROFESSIONAL:	11,500/200 = 58 SPACES
MEDICAL:	11,500/200 = 58 SPACES
PERSONAL SERVICES:	2,000/200 = 10 SPACES
TOTAL REQUIRED:	126 SPACES
TOTAL PROVIDED:	126 SPACES

RECEIVED
By Planning Department at 2:37 pm, Apr 27, 2017

- NOTES**
- NO PROTECTED TREES ON-SITE.
 - SAINTPAUL CONTAINING SCREENING WALLS WILL BE BRICK MASONRY, INCLUDING A METAL GATE, FENCED AND PAINTED, AND THE SANITATION CONTAINER SCREENING WALLS, GATE, AND PAD SITE WILL BE SPECIFICATIONS.
 - MECHANICAL AND HEATING AND AIR CONDITIONING EQUIPMENT IN BUILDINGS SHALL BE INSTALLED IN ACCORDANCE WITH THE CITY OF MCKINNEY CODE OF ORDINANCES.
 - LIGHTING FOR THE SUBJECT PROPERTY WILL BE CONSTRUCTED IN ACCORDANCE WITH CHAPTER 58 OF THE CITY OF MCKINNEY CODE OF ORDINANCES.

SITE DATA SUMMARY CHART

ZONING:	SB0900A OFFICE
PROPOSED USE:	OFFICE DEVELOPMENT
LOT AREA:	548.6 AC - 238,689 SF
IMPROVING AREA:	17,064 SF (7.7%)
BUILDING SQUARE FOOTAGE:	54,000 SF
PROFESSIONAL:	27,000 SF (14 SUITES)
MEDICAL:	27,000 SF (14 SUITES)
PERSONAL SERVICES:	2,000 SF (2 SUITES)
LOT COVERAGE:	24.1%
FLOOR AREA RATIO:	0.241
TOTAL PARKING SPACES:	27,000/400 = 68 SPACES
PROFESSIONAL:	27,000/200 = 135 SPACES
MEDICAL:	27,000/200 = 135 SPACES
PERSONAL SERVICES:	2,000/200 = 10 SPACES
TOTAL REQUIRED:	280 SPACES
TOTAL PROVIDED:	280 SPACES

5,498 Acres
239,499 SF

SITE PLAN
COLLIN MCKINNEY COMMERCIAL ADDITION
SOUTHERN HILLS OFFICE PARK
BLOCK A, LOT 1

ELIAS ALEXANDER SURVEY, ABST. 18
CITY OF MCKINNEY, COLLIN COUNTY, TEXAS

Applicant:
CloudIoT Investments
1901 N. Akard Street
Suite 100
Dallas, TX 75201
(214) 871-2640
Contact: Bill Peavy

Engineer:
Binkley & Barfield, C&P, Inc.
1801 Gateway Park, Suite 101
Dallas, TX 75201
(972) 644-2800
Contact: Kyle Bennett