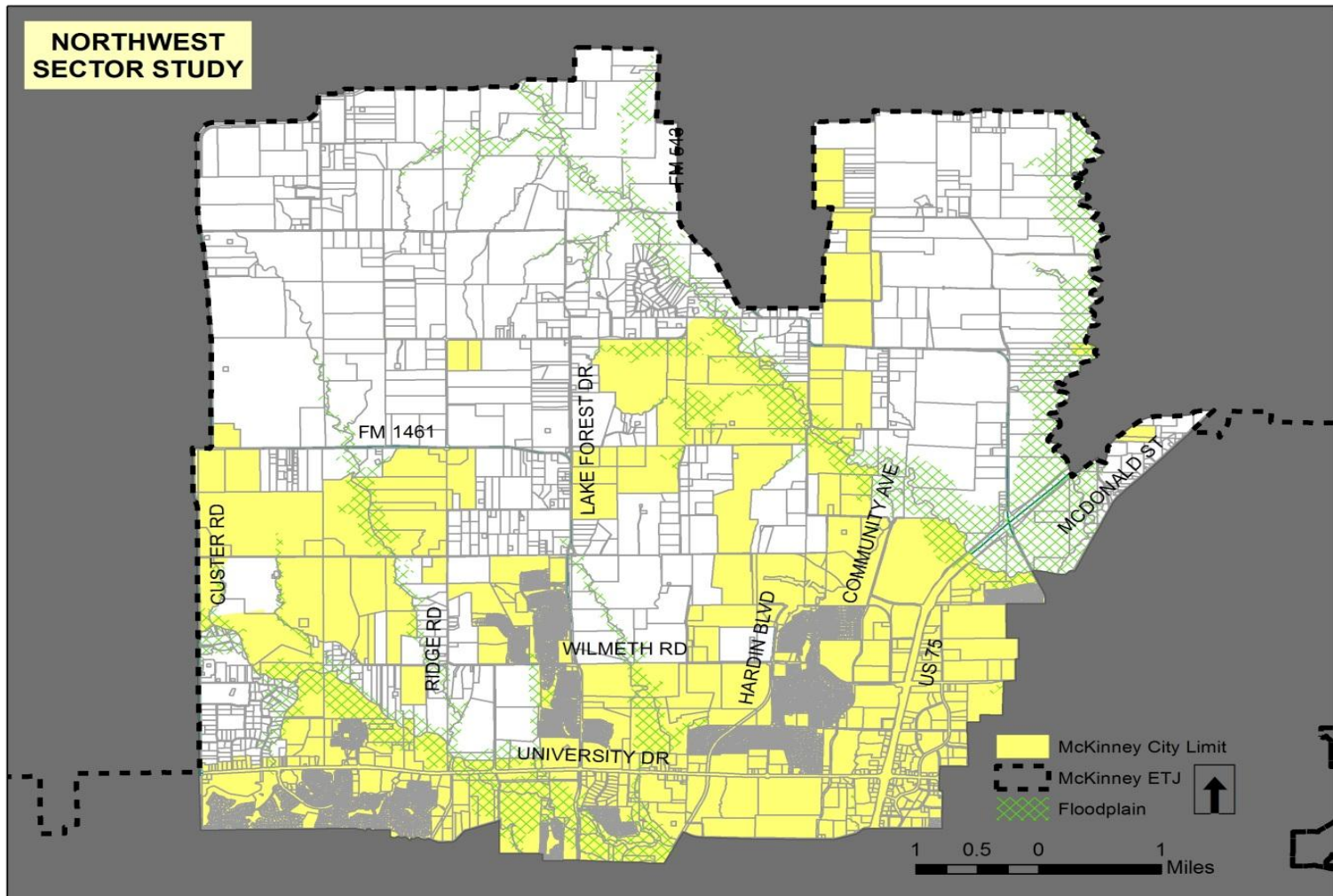


Northwest Sector Planning Study

City of McKinney
Planning Department



Study Area Limits





Staff Recommendations – Draft Scope

Primary Tasks

- Public Input Process
- Market Analysis of Development Opportunities
- Land Use, Open Space, Transportation and Infrastructure Analyses
- Development Alternatives & Implementation Strategies

Additional Implementation Tasks

- *Annexation Plan* - integrates economic and fiscal criteria, for development and improvements.
- *Framework and Template for “Pre-Annexation” Agreements with landowners in the City’s ETJ.*
- *Infrastructure Investment Plan* - improvements required to achieve desired development along with the hard and soft costs, economic impacts and prioritized phasing plan.



Staff Recommended Budget

\$260,000 to \$300,000 - Primary Tasks & Implementation Tasks

\$150,000 - currently budgeted for the Study

(allocated in the Planning Departments FY12-13 professional services budget).

- ❖ *Anticipated cost sharing partnership with the McKinney Economic Development Corporation (MEDC) and the McKinney Community Development Corporation (MCDC), each providing additional funding in amounts ranging from \$55,000 - \$75,000.*