



Matthew King  
Architect

Phone: 469-742-0678  
matting@mkingarchitect.com

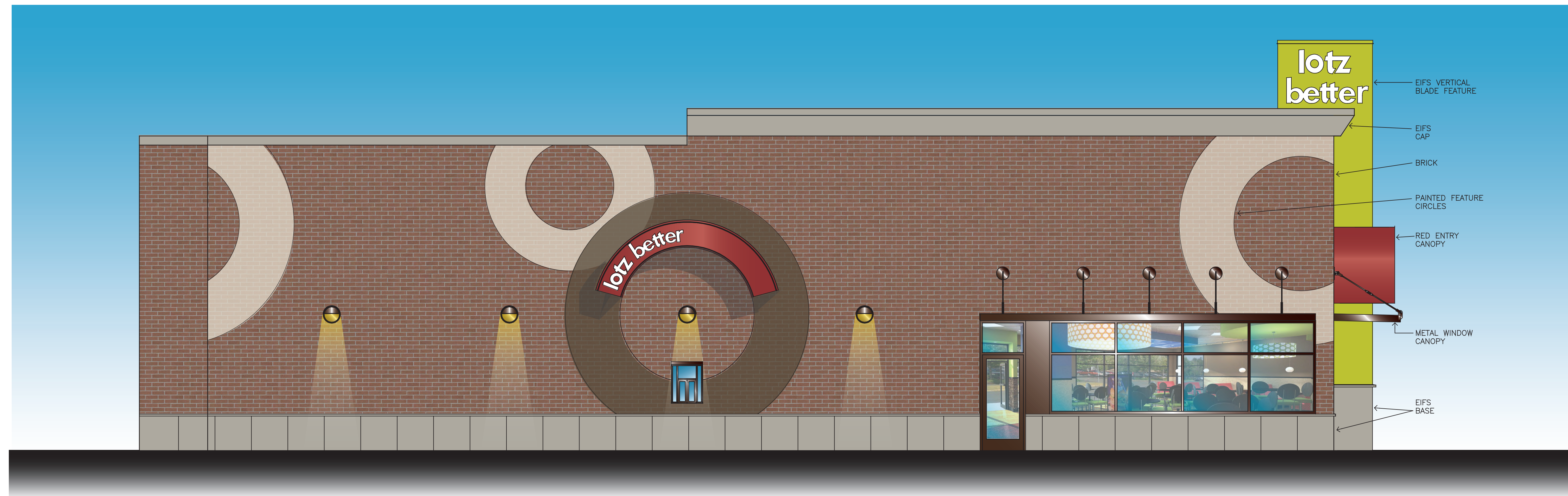
©Matthew King Architect

PRELIMINARY NOT  
FOR REGULATORY APPROVAL,  
PERMITTING OR CONSTRUCTION.  
FOR INTERIM REVIEW ONLY.  
MATTHEW P. KING  
ARCHITECT  
TX REGISTRATION  
NO. 17957

December 13, 2012



01 NORTH EXTERIOR ELEVATION  
1/4" = 1'-0"



02 EAST EXTERIOR ELEVATION  
1/4" = 1'-0"

Owner:

SCSD-Finnell, LTD

309 Highland Court  
Double Oak, Tx 75077

Project:

Multi Tenant Building  
1521 W. University Dr  
Suites 100-110-120  
McKinney, Texas 75070

Scale: as noted

Issue For:

Pricing Issue: May 30, 2014  
Exterior Submittal: 6-18-14