

Downtown Parking
Committee
June 7, 2016



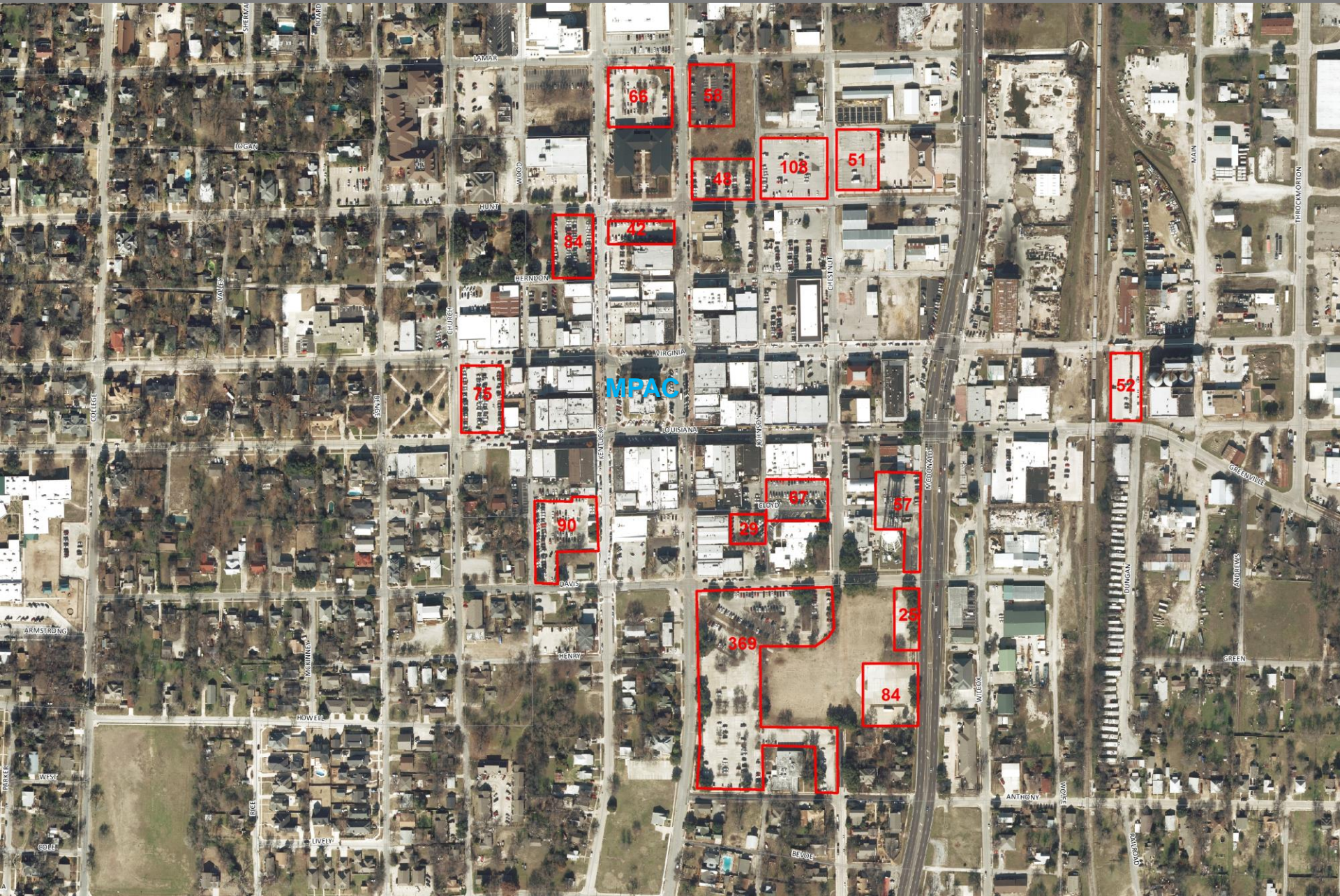
- MONEY MAGAZINE 2014 -

Recap

- On 4/19/16, the City Council adopted a resolution supporting the following ‘short-term’ recommendations:
 - Designing and constructing surface parking lots at the
(1) southwest corner of Kentucky and Lamar and at the
(2) northeast corner of Hunt and Tennessee
 - Improve wayfinding in and around downtown for public parking lots (includes renaming/numbering of public parking lots)
 - Improve lighting of downtown public parking lots
- On 4/28/16, the Downtown Parking Committee shifted its focus to ‘long-term’ parking solutions by evaluating potential sites for structured parking facilities
 - Based on downtown build-out projections from the 2009 Parking Study, there will be a deficit of *between 1,400 and 2,500 parking spaces**

** These figures represent an estimated parking need based on hypothetical maximum development capacities in downtown over extended periods of time.*

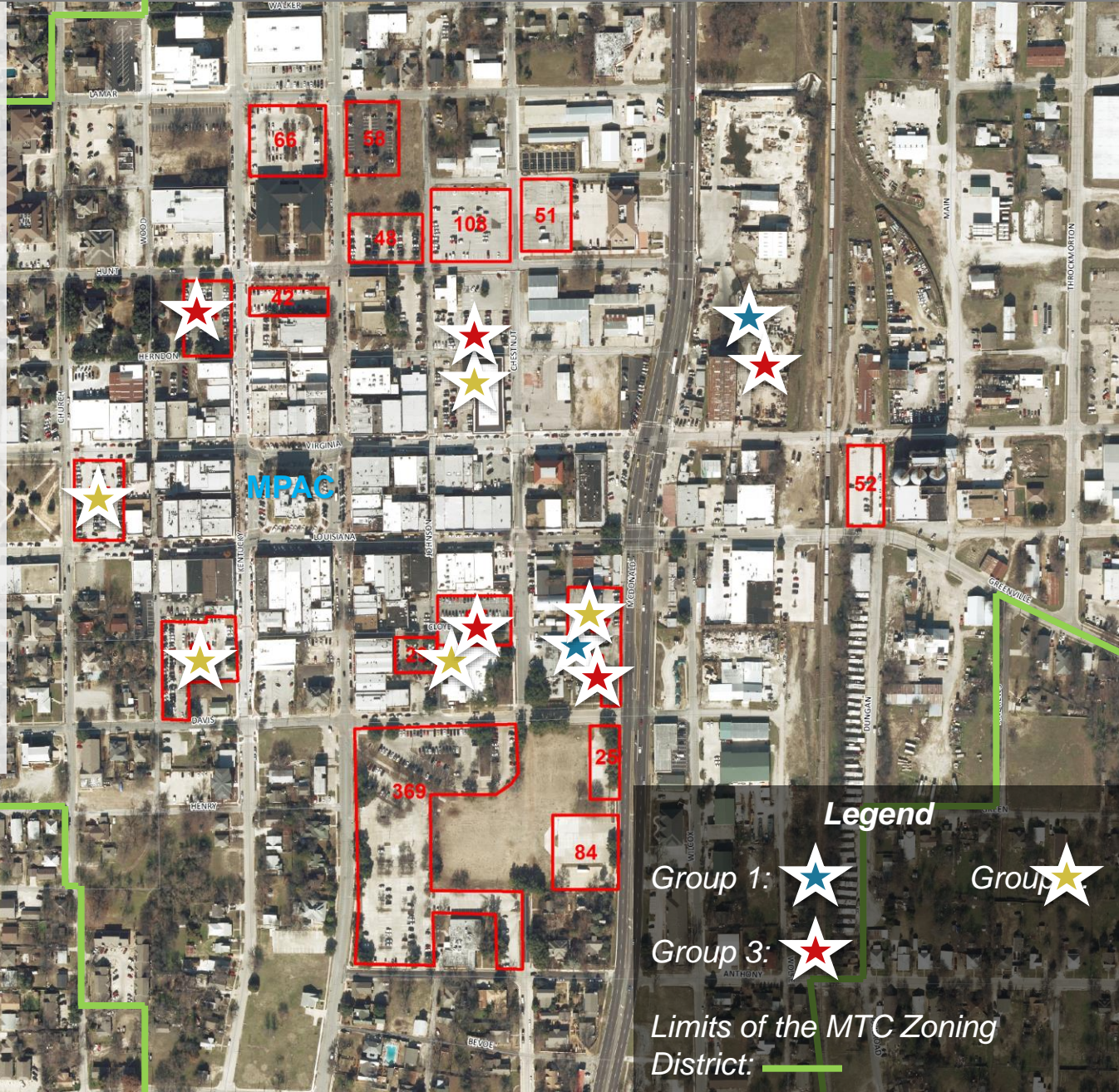
Current Location of Public Lots



Recommended Structured Parking Locations

3 groups considered these factors:

- Proximity to the square and the historic downtown as a whole
- Size of the parking garage (number of spaces, height, land area consumed, etc.)
- Appearance (facade treatment)
- Impact on adjacent development and capacity of infrastructure (roads, traffic accommodations)
- Operation and Maintenance Considerations



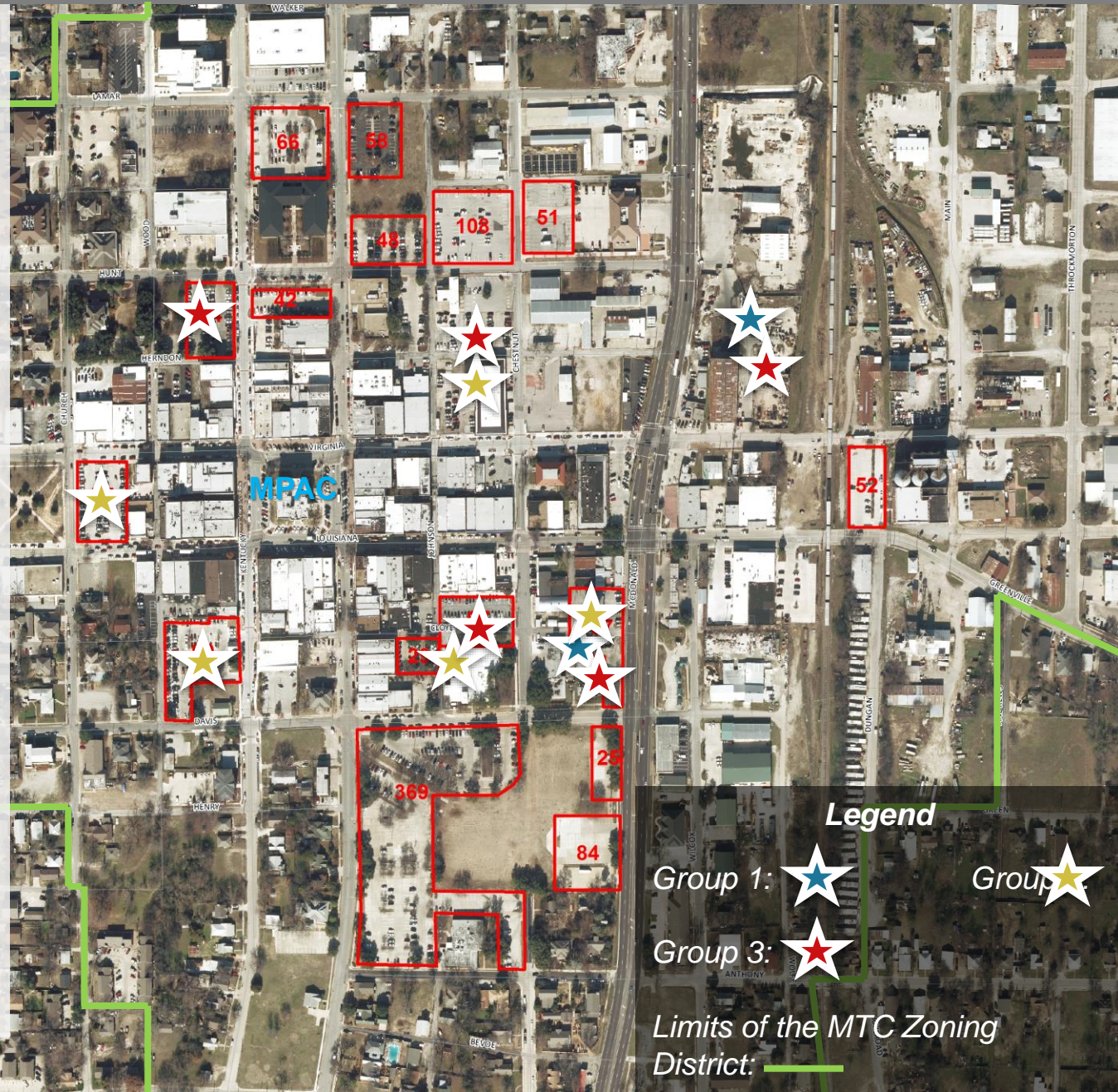
Legend

- Group 1:
- Group 2:
- Group 3:
- Limits of the MTC Zoning District:

Recommended Structured Parking Locations

Feedback Received:

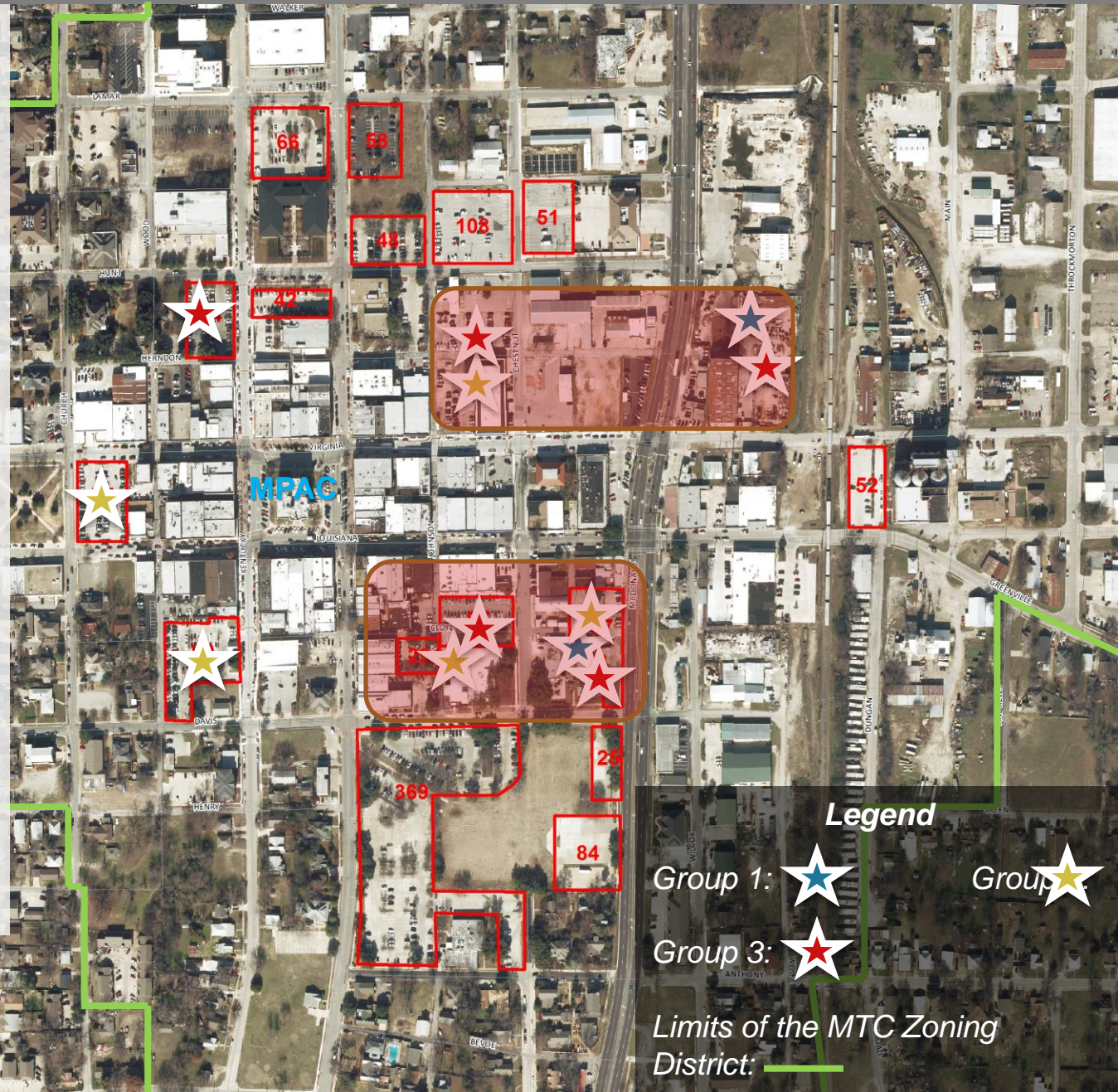
- Recommendation that City facilities and an associated parking garage could be moved east of State Highway 5
- A structured parking facility should be constructed on the old water tower site
- A structured parking facility should be constructed on the municipal court building site
- A structured parking facility should be constructed on the site located on the NW corner of Chestnut and Virginia
- Structured parking facilities could be built west of Kentucky IF they are appropriately scaled (shorter heights) and buffered from adjacent uses (protect residential uses to the west)



Recommended Structured Parking Locations

Recommendations:

- The City should conduct a study to determine the location of future city hall, looking at property east of Highway 5 as an option.
- The Northeast and Southeast sectors of downtown should be considered for future structured parking.
- Areas west of Kentucky Street should not be considered at this time for parking structures. Any consideration of these areas in the future should require structured parking to be appropriately scaled (shorter heights) and buffered from adjacent uses (protect residential uses to the west).



Next Steps

The committee will review and provide input on proposed action items as they progress, including:

- Selection of property for future parking lots and structures
- Parking lot and/or structure designs
- Wayfinding and identification signage
- Lighting improvements