

# McKinney

National Airport



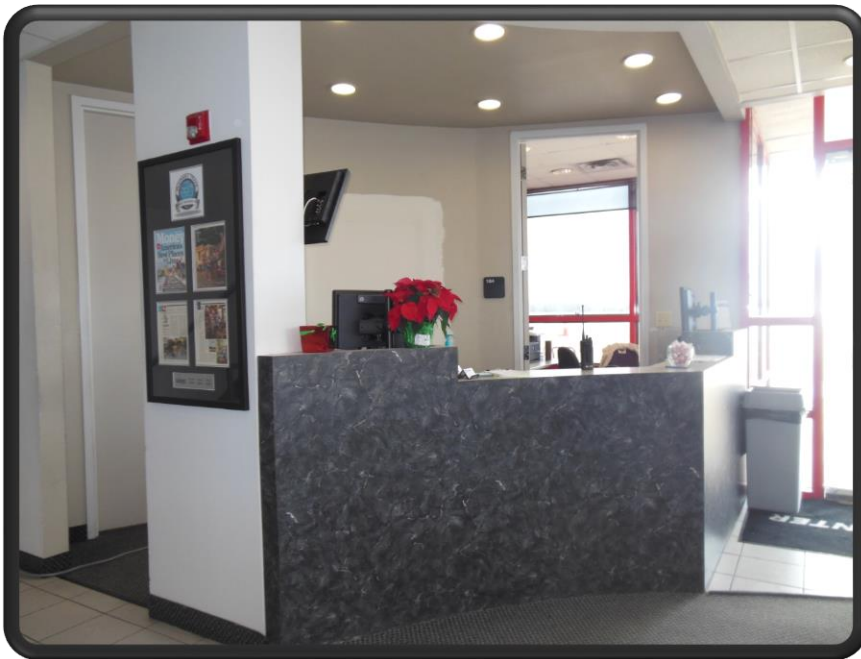
- MONEY MAGAZINE 2014 -

# McKinney National Airport

- **City has owned and operated the airport since 1979**
- City contributed General Fund money to its operation – approximately \$575,000 a year -- since 2002
- **\$71 million was invested in airport infrastructure to support private development since 2002**
- Private Development was slow to non-existent
- **City was felt compelled to explore new revenue sources and enhanced development initiatives**
- City purchased the Fixed Base Operations and Hangar Facilities in November 2013.

# Rebranded

## FBO Facility



## Development Concerns

- Change the FBO Name
- Hangars not at Capacity
- Fuel Sales
- Employee Performance
- Marketing the FBO
- Community Involvement
- Facility Appearance

# The New Beginning

## Updated FBO



## Results

- McKinney Air Center (new FBO name)
- Award Winning FBO #1
- Hangars at Capacity
- Employee Experience
- Fuel Sales increase
- Covering debt service
- Future Expansion

# McKinney Air Center

- Award Winning

- #1 FBO in the Nation 2014
- #6 FBO in the Nation 2015
- #1 FBO in the Nation 2016



- Fuel Sales Volumes

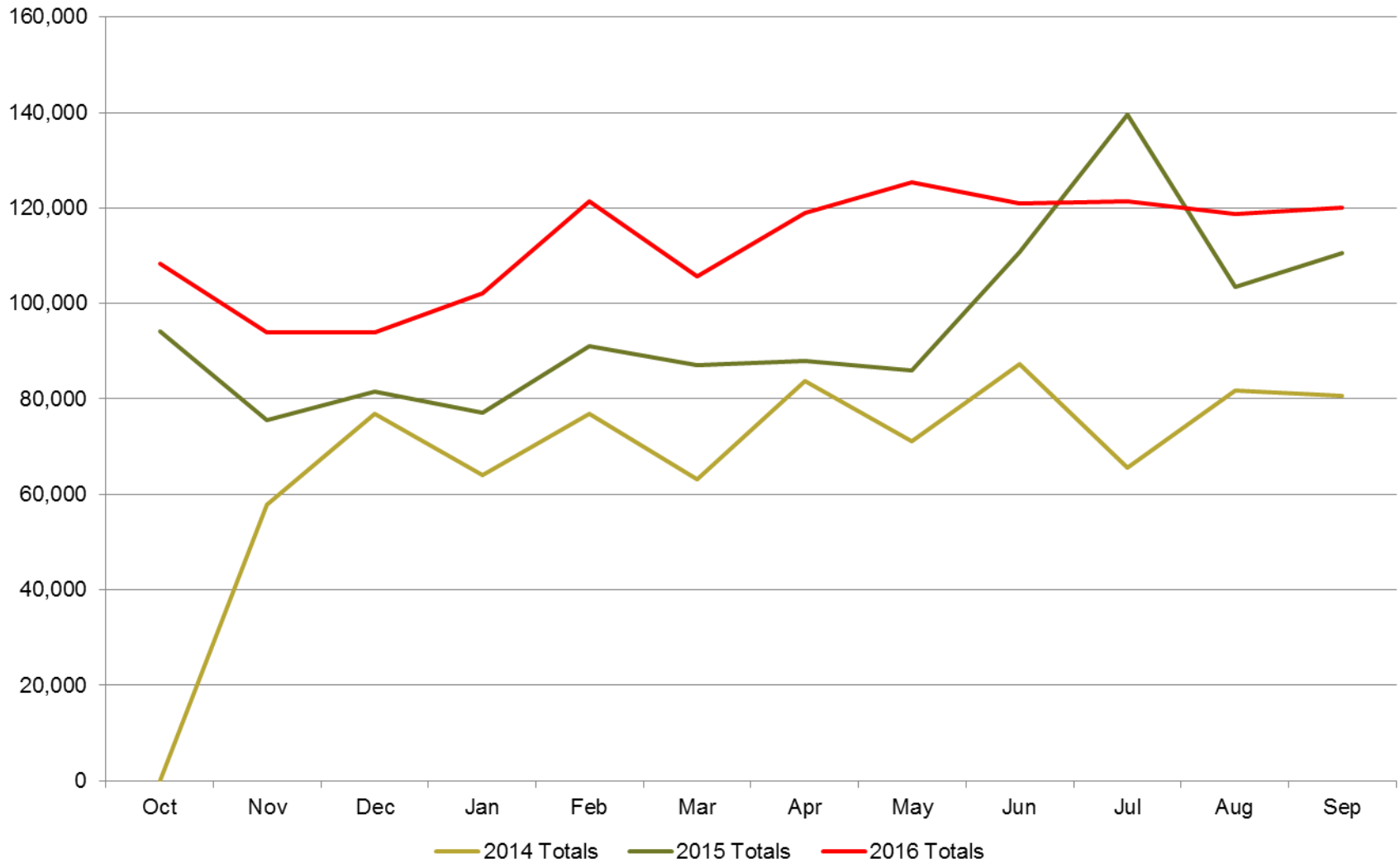
2014 Fuel Volumes 888,000 gallons

2015 Fuel Volumes 1,100,000 gals. (increase of 25%)

2016 Fuel Volumes 1,350,000 gals. (increase of 24%)

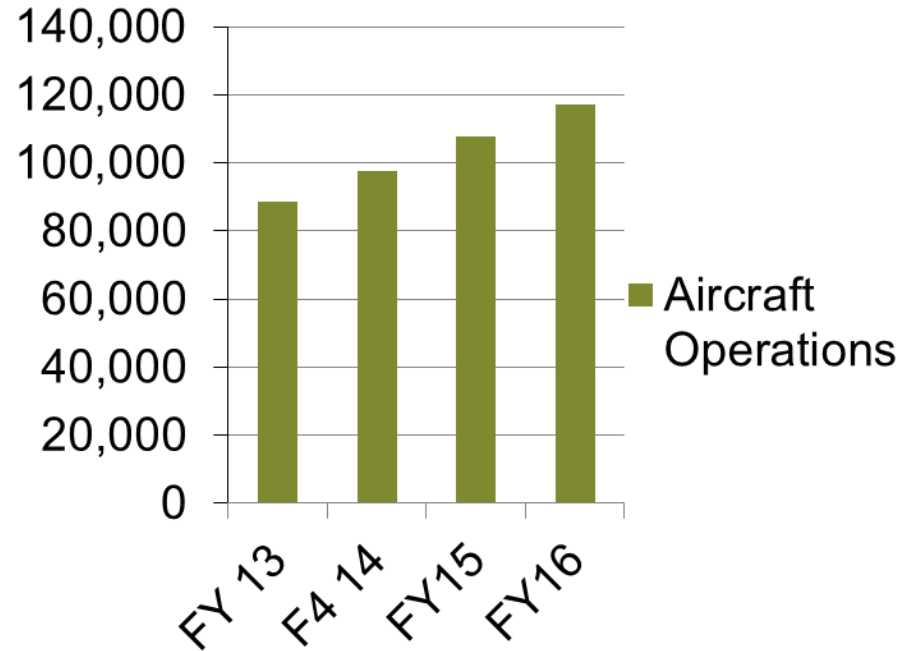


# Fuel Gallons Sold

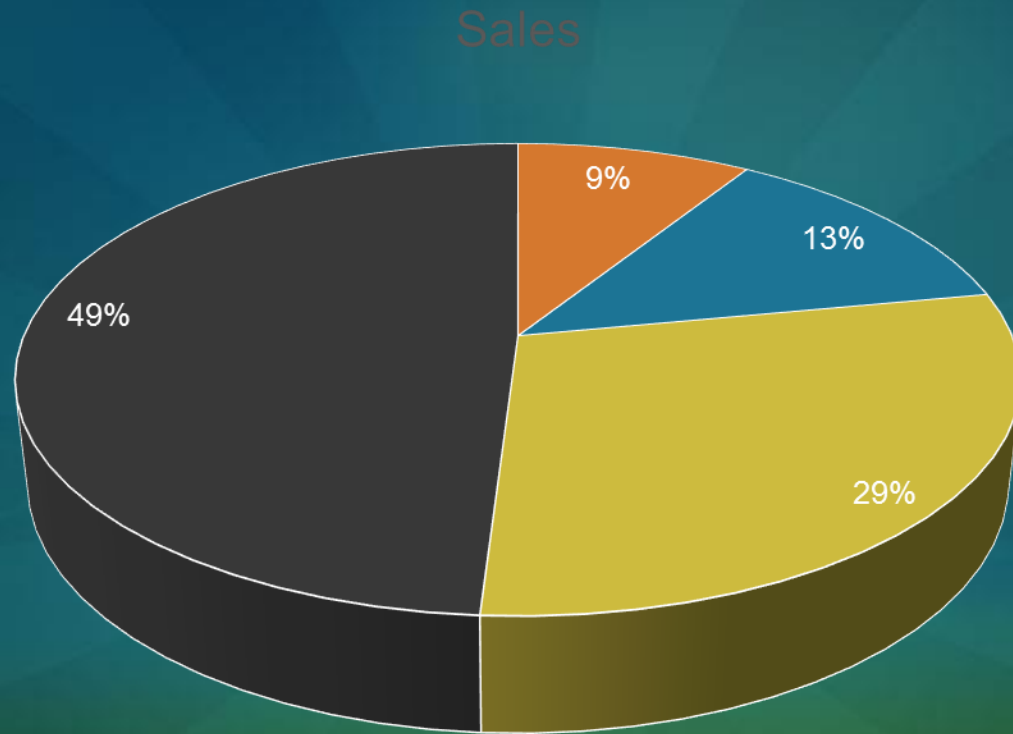


# McKinney National Airport Aircraft

Based Aircraft Type	2015
Small Engine	251
Multi Engine	33
Jet	28
Helicopter	4
<b>Total</b>	<b>316</b>



# Revenue Breakdown



■ Misc. Sales   ■ Avgas sales   ■ Hangar Leases   ■ Jet Fuel Sales



# Aviation Companies Since Nov 2013



- Monarch Air (Expansion)
- First Flight
- Ag Power
- Front Burner Restaurants
- Fenton Motors
- Club Air
- Jet Trader Group
- AirFlite
- Dallas Jet Int.
- Corp. Flight Mgt.
- ATP
- RR Aviation
- TSG Jet Partners
- Pro-Health
- Letourneau University
- Royal Air Cargo

# Airport Tax Base

## *McKinney National Airport Annual Tax Generation Summary*

Calculated September 2015

### **Tax Collection Statistics Tax Year 2003 thru 2015 (13 years)**

<b>Collecting Entity</b>	<b>Total Collected</b>	<b>Average Per Year</b>
City of McKinney	6,481,677	498,591
MISD	18,470,513	1,420,809
Collin County	2,705,187	208,091
Collin College	951,530	733,195
<b>Grand Total</b>	<b>\$28,608,907</b>	<b>\$2,200,685</b>

- MISD: *Average cost to educate one student per year is \$8,297.*
- On average the airport generates \$1,420,800 in ad valorem tax per year, which is the equivalent of educating 170 children at Fannie Finch Elementary School.

# TKI Serves Everyone

- Direct Business to Local Economy
- Creates Jobs
- Economic Driver-2010 Economic Impact \$44.2M
- Provides Medical Services
- Provides Public Transportation
- Community Out Reach

# Airport Development

## **Airport Master Plan Update**

- Scheduled to begin early November 2016
- 20-year planning horizon
- Will consider future demand and airport capacity to meet that demand
- Will recommend airport land, facilities and infrastructure development

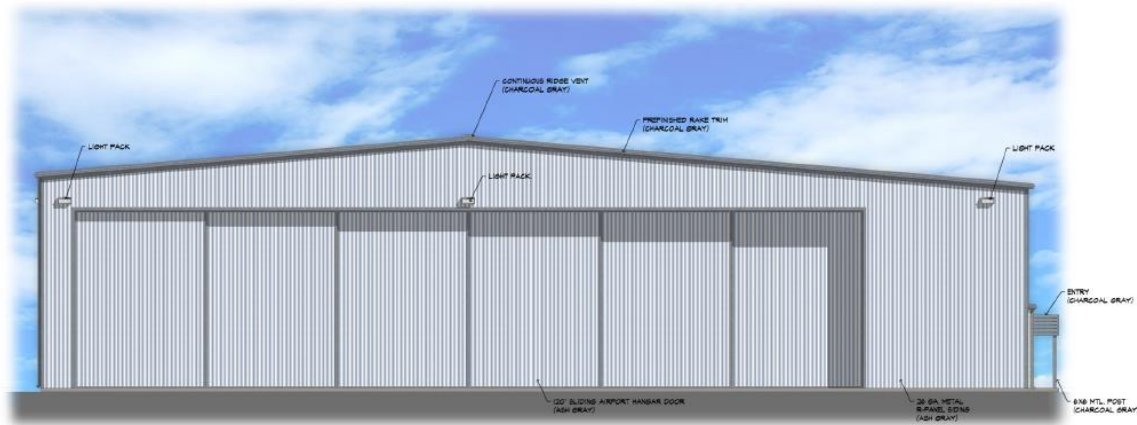
# On-Going Terminal Complex & Hangar Development

- Expanded Passenger Terminal Complex
  - GA Passenger Terminal and entrance signage
  - Expand vehicle parking capacity

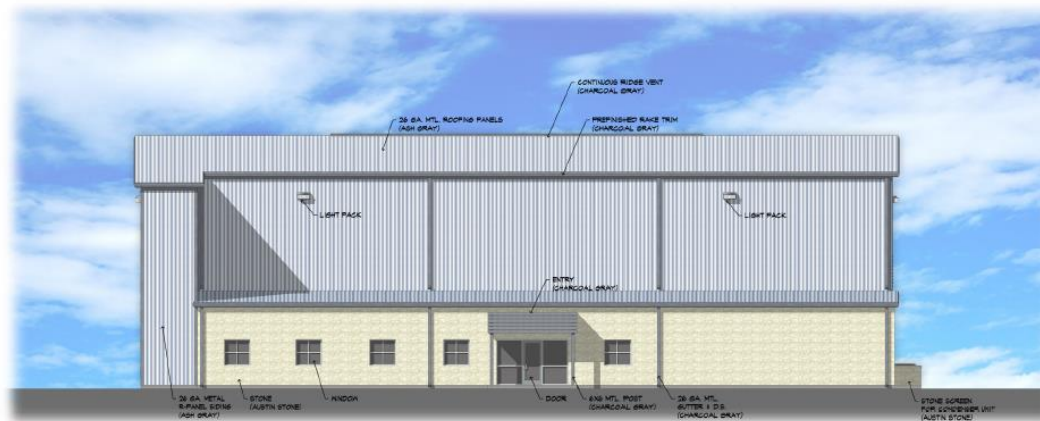


# On-Going Hangar Development

- Hangar Development 2015-17



1 FRONT ELEVATION  
1/8" = 1'-0"



2 RIGHT SIDE ELEVATION  
1/8" = 1'-0"

# McKinney

National Airport



Your North Dallas  
Business  
Aviation Connection

