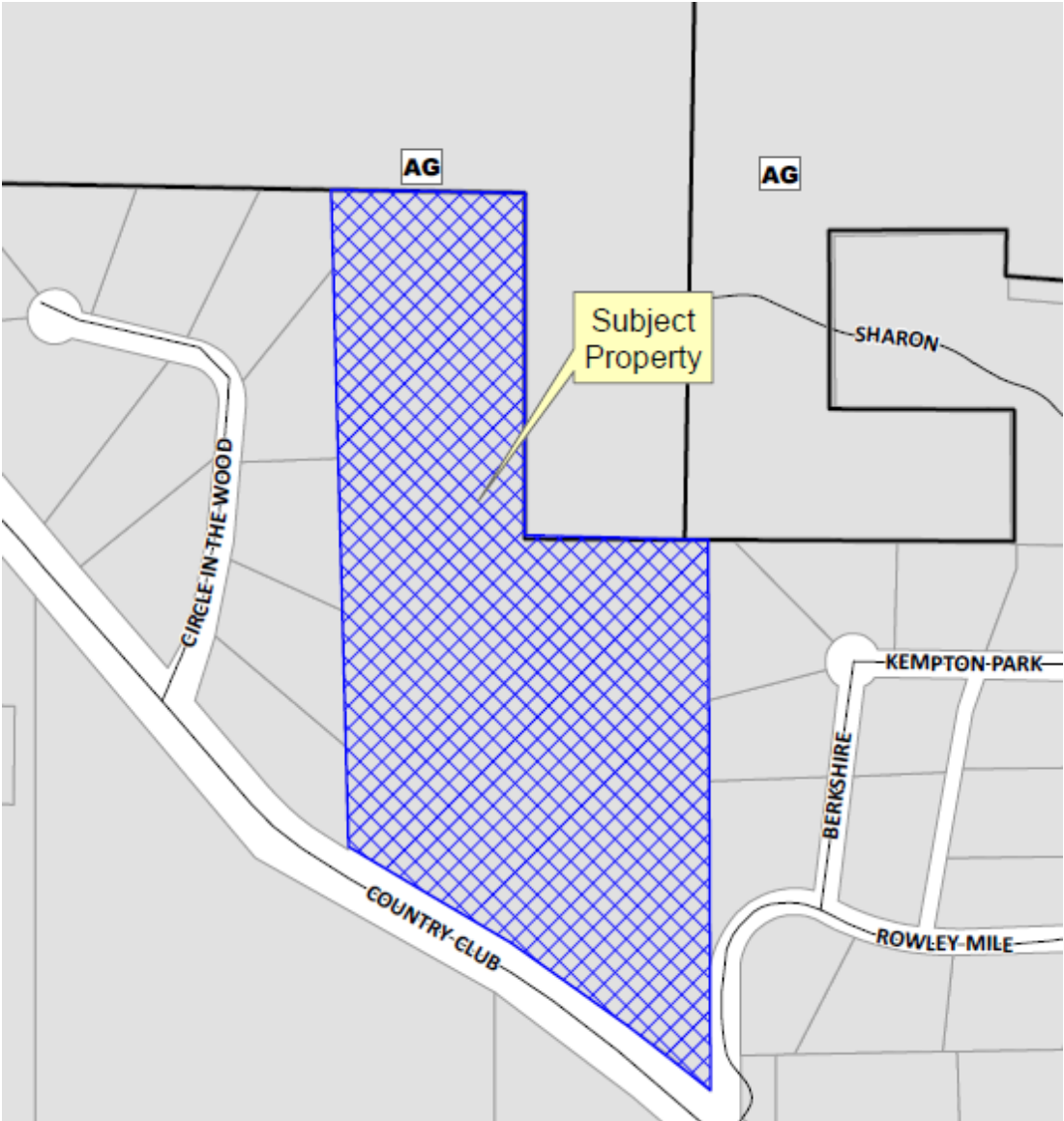


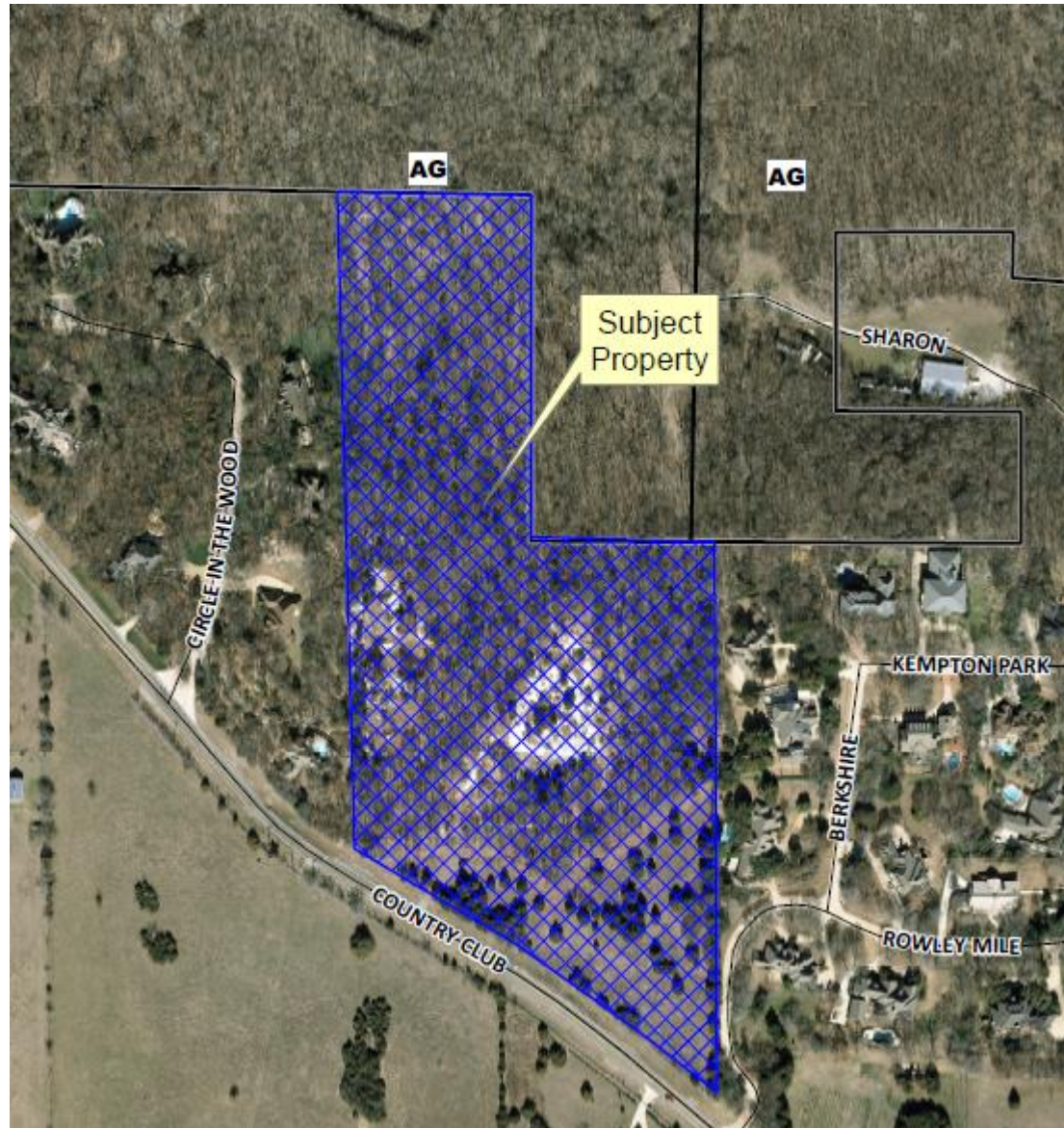
Three Oaks Preliminary-Final Plat (13-269PF)



Location Map



Aerial Exhibit



Proposed Preliminary-Final Plat

OWNERS:
BIRNBAUM MEMORIAL LAND TRUST
301 NORTH BALLARD ST.
P.O. BOX 540
WILEY, TEXAS 75088

DEVELOPER:
13371 COUNTRY CLUB ROAD, LLC
P.O. BOX 042654
PLANO, TEXAS 75088

THIS INSTRUMENT IS KNOWN TO ALL MEN BY THIS
PLAT. THAT AN LEAS, PROSPECTIVE PURCHASER, BY AND
THROUGH THE UNDERWRITER, ITS SUCCESSORS, HEREBY
ACCEPTS THIS PLAT (HEREINAFTER AS THE "INDEFENSIBLE
RESPONSE PROPERTY AS THESE SALES ACCORDING TO
ADDITION TO THE CITY OF MOCKNEY, COLLIN
COUNTY, TEXAS, AND TO BESETT CONDUITS TO THE
PUBLIC USE PROVIDED ALL STREETS, RIGHTS-OF-WAY,
ALLEYS, AND EGRESSWAYS SHOWN THEREON.

WITNES MY HAND AT THE CITY OF MOCKNEY, COLLIN
COUNTY, TEXAS, THIS _____ DAY OF _____, 2014.

JON LEWIS
EXECUTIVE DIRECTOR
BIRNBAUM MEMORIAL LAND TRUST

STATE OF TEXAS
COUNTY OF COLLIN

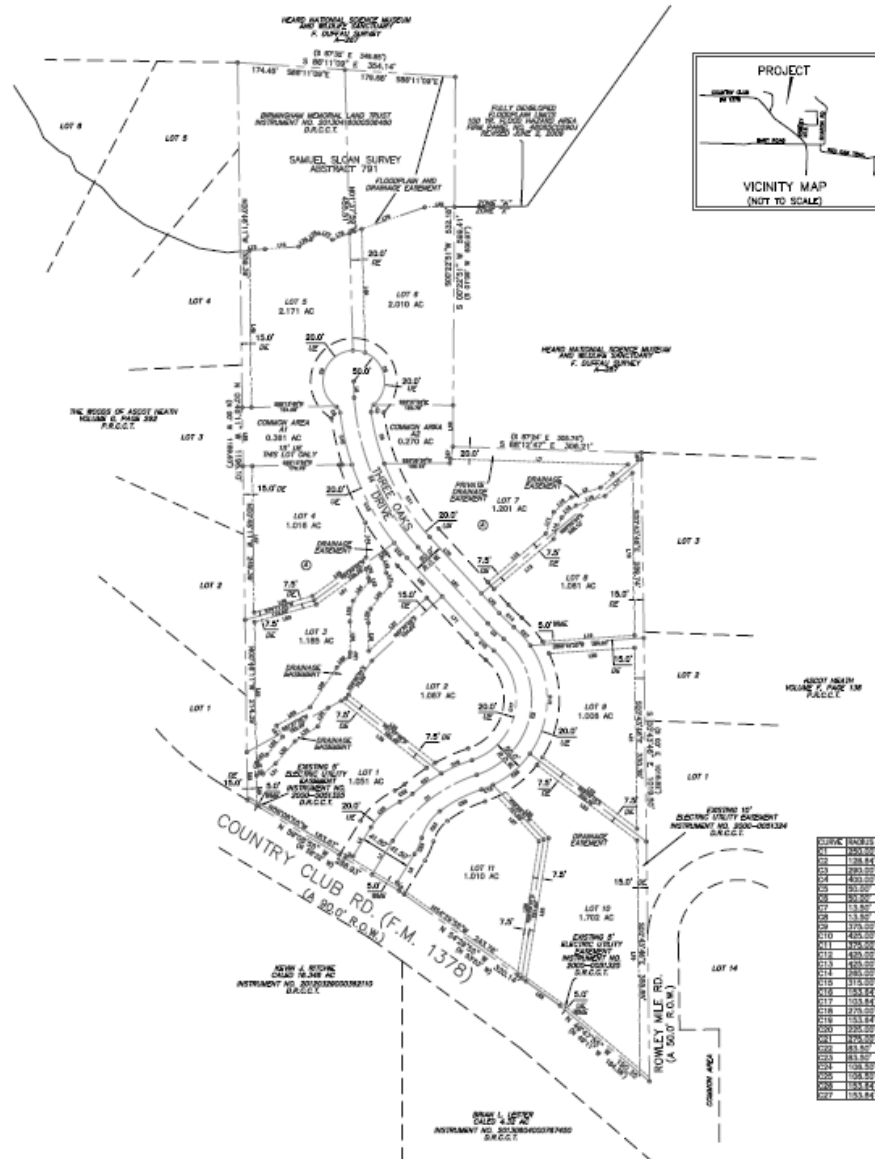
NOTICE BE, THE UNDERSIGNED, A NOTARY PUBLIC IN
AND FOR THE SAID COUNTY AND STATE, ON THIS DAY
PERSONALLY APPEARED JON LEWIS WHO TO ME TO BE
THE PERSON WHOSE NAME IS SUBSCRIBED TO THE
FOREGOING INSTRUMENT AND ACKNOWLEDGED TO ME
THAT HE EXECUTED THE SAME FOR THE PURPOSES
AND CONSIDERATION THEREIN EXPRESSED AND IN THE
CAPACITY THEREIN STATED.

GIVEN UNDER MY HAND AND SEAL OF OFFICE THIS
DAY OF _____, 2014.

NOTARY PUBLIC:

FLOODPLAIN NOTES:

ACCORDING TO THE SURVEYOR'S INTERPRETATION OF
INFORMATION SHOWN ON THE NATIONAL FLOOD INSURANCE
PROGRAM (NFIP) "FLOOD INSURANCE RATE MAP" (FIRM)
COMMUNITY PANEL NO. 4806000202 & APPROVED AINE 02,
2004, THE PROJECT LIES WITHIN A "SPECIAL FLOOD
HAZARD AREA" (SFHA) INDICATED BY "100-YEAR FLOOD"
ZONE AS ISSUED BY THE U.S. DEPARTMENT OF HOUSING
AND URBAN DEVELOPMENT FEDERAL INSURANCE
ADMINISTRATOR, OR THE FEDERAL EMERGENCY MANAGEMENT
AGENCY.



| LINE | BEARING | DISTANCE |
|------|------------------|----------|
| 11 | N 81°17'33.0\" E | 84.53 |
| 12 | S 17°42'50.0\" W | 14.00 |
| 13 | N 89°52'38.0\" E | 54.24 |
| 14 | N 81°17'33.0\" E | 50.00 |
| 15 | S 83°27'31.0\" W | 50.77 |
| 16 | S 81°17'33.0\" W | 29.40 |
| 17 | S 88°12'47.0\" W | 388.70 |
| 18 | N 89°52'38.0\" E | 54.24 |
| 19 | N 71°33'13.2\" E | 48.00 |
| 20 | N 89°52'38.0\" E | 37.30 |
| 21 | N 81°17'33.0\" E | 27.29 |
| 22 | N 89°52'38.0\" E | 152.80 |
| 23 | N 89°52'38.0\" E | 132.20 |
| 24 | N 89°52'38.0\" E | 57.82 |
| 25 | N 89°52'38.0\" E | 28.00 |
| 26 | N 81°17'33.0\" E | 28.00 |
| 27 | N 89°52'38.0\" E | 28.19 |
| 28 | N 89°52'38.0\" E | 300.00 |
| 29 | N 88°11'53.0\" W | 148.80 |
| 30 | N 88°11'53.0\" W | 181.16 |
| 31 | S 10°43'40.0\" N | 383.40 |
| 32 | S 10°43'40.0\" N | 194.30 |
| 33 | N 88°11'53.0\" W | 300.00 |
| 34 | S 88°11'53.0\" W | 377.78 |
| 35 | N 89°52'38.0\" E | 238.03 |
| 36 | N 89°52'38.0\" E | 101.80 |
| 37 | N 89°52'38.0\" E | 88.20 |
| 38 | N 89°52'38.0\" E | 260.00 |
| 39 | N 89°52'38.0\" E | 48.00 |
| 40 | N 81°17'33.0\" E | 44.90 |
| 41 | N 89°52'38.0\" E | 28.00 |
| 42 | N 81°17'33.0\" E | 44.90 |
| 43 | N 89°52'38.0\" E | 30.81 |
| 44 | N 81°17'33.0\" E | 178.38 |
| 45 | N 81°17'33.0\" E | 178.38 |
| 46 | N 81°17'33.0\" E | 178.38 |
| 47 | N 81°17'33.0\" E | 178.38 |
| 48 | N 89°52'38.0\" E | 45.80 |
| 49 | N 89°52'38.0\" E | 30.00 |
| 50 | N 89°52'38.0\" E | 18.81 |
| 51 | S 81°17'33.0\" E | 21.40 |
| 52 | N 89°52'38.0\" E | 11.83 |
| 53 | N 89°52'38.0\" E | 45.80 |
| 54 | N 89°52'38.0\" E | 18.79 |
| 55 | N 89°52'38.0\" E | 300.00 |
| 56 | N 89°52'38.0\" E | 18.79 |
| 57 | N 81°17'33.0\" E | 87.80 |
| 58 | N 89°52'38.0\" E | 300.00 |
| 59 | N 89°52'38.0\" E | 254.30 |
| 60 | N 81°17'33.0\" E | 88.11 |
| 61 | S 17°41'24.0\" W | 104.40 |
| 62 | S 17°41'24.0\" W | 104.40 |
| 63 | S 17°41'24.0\" W | 104.40 |
| 64 | S 17°41'24.0\" W | 104.40 |
| 65 | S 17°41'24.0\" W | 104.40 |
| 66 | S 17°41'24.0\" W | 104.40 |
| 67 | S 17°41'24.0\" W | 104.40 |
| 68 | S 17°41'24.0\" W | 104.40 |
| 69 | S 17°41'24.0\" W | 104.40 |
| 70 | S 17°41'24.0\" W | 104.40 |
| 71 | S 17°41'24.0\" W | 104.40 |
| 72 | S 17°41'24.0\" W | 104.40 |
| 73 | S 17°41'24.0\" W | 104.40 |
| 74 | S 17°41'24.0\" W | 104.40 |
| 75 | S 17°41'24.0\" W | 104.40 |
| 76 | S 17°41'24.0\" W | 104.40 |
| 77 | S 17°41'24.0\" W | 104.40 |
| 78 | S 17°41'24.0\" W | 104.40 |
| 79 | S 17°41'24.0\" W | 104.40 |
| 80 | S 17°41'24.0\" W | 104.40 |
| 81 | S 17°41'24.0\" W | 104.40 |
| 82 | S 17°41'24.0\" W | 104.40 |
| 83 | S 17°41'24.0\" W | 104.40 |
| 84 | S 17°41'24.0\" W | 104.40 |
| 85 | S 17°41'24.0\" W | 104.40 |
| 86 | S 17°41'24.0\" W | 104.40 |
| 87 | S 17°41'24.0\" W | 104.40 |
| 88 | S 17°41'24.0\" W | 104.40 |
| 89 | S 17°41'24.0\" W | 104.40 |
| 90 | S 17°41'24.0\" W | 104.40 |
| 91 | S 17°41'24.0\" W | 104.40 |
| 92 | S 17°41'24.0\" W | 104.40 |
| 93 | S 17°41'24.0\" W | 104.40 |
| 94 | S 17°41'24.0\" W | 104.40 |
| 95 | S 17°41'24.0\" W | 104.40 |
| 96 | S 17°41'24.0\" W | 104.40 |
| 97 | S 17°41'24.0\" W | 104.40 |
| 98 | S 17°41'24.0\" W | 104.40 |
| 99 | S 17°41'24.0\" W | 104.40 |
| 100 | S 17°41'24.0\" W | 104.40 |

| LINE | BEARING | DISTANCE | CURVE LENGTH | CHORD BEARING | TANGENT ANGLE |
|------|------------------|----------|--------------|------------------|---------------|
| 101 | S 89°52'38.0\" E | 178.00 | 178.00 | S 89°52'38.0\" E | 89°52'38.0\" |
| 102 | S 89°52'38.0\" E | 178.00 | 178.00 | S 89°52'38.0\" E | 89°52'38.0\" |
| 103 | S 89°52'38.0\" E | 178.00 | 178.00 | S 89°52'38.0\" E | 89°52'38.0\" |
| 104 | S 89°52'38.0\" E | 178.00 | 178.00 | S 89°52'38.0\" E | 89°52'38.0\" |
| 105 | S 89°52'38.0\" E | 178.00 | 178.00 | S 89°52'38.0\" E | 89°52'38.0\" |
| 106 | S 89°52'38.0\" E | 178.00 | 178.00 | S 89°52'38.0\" E | 89°52'38.0\" |
| 107 | S 89°52'38.0\" E | 178.00 | 178.00 | S 89°52'38.0\" E | 89°52'38.0\" |
| 108 | S 89°52'38.0\" E | 178.00 | 178.00 | S 89°52'38.0\" E | 89°52'38.0\" |
| 109 | S 89°52'38.0\" E | 178.00 | 178.00 | S 89°52'38.0\" E | 89°52'38.0\" |
| 110 | S 89°52'38.0\" E | 178.00 | 178.00 | S 89°52'38.0\" E | 89°52'38.0\" |
| 111 | S 89°52'38.0\" E | 178.00 | 178.00 | S 89°52'38.0\" E | 89°52'38.0\" |
| 112 | S 89°52'38.0\" E | 178.00 | 178.00 | S 89°52'38.0\" E | 89°52'38.0\" |
| 113 | S 89°52'38.0\" E | 178.00 | 178.00 | S 89°52'38.0\" E | 89°52'38.0\" |
| 114 | S 89°52'38.0\" E | 178.00 | 178.00 | S 89°52'38.0\" E | 89°52'38.0\" |
| 115 | S 89°52'38.0\" E | 178.00 | 178.00 | S 89°52'38.0\" E | 89°52'38.0\" |
| 116 | S 89°52'38.0\" E | 178.00 | 178.00 | S 89°52'38.0\" E | 89°52'38.0\" |
| 117 | S 89°52'38.0\" E | 178.00 | 178.00 | S 89°52'38.0\" E | 89°52'38.0\" |
| 118 | S 89°52'38.0\" E | 178.00 | 178.00 | S 89°52'38.0\" E | 89°52'38.0\" |
| 119 | S 89°52'38.0\" E | 178.00 | 178.00 | S 89°52'38.0\" E | 89°52'38.0\" |
| 120 | S 89°52'38.0\" E | 178.00 | 178.00 | S 89°52'38.0\" E | 89°52'38.0\" |
| 121 | S 89°52'38.0\" E | 178.00 | 178.00 | S 89°52'38.0\" E | 89°52'38.0\" |
| 122 | S 89°52'38.0\" E | 178.00 | 178.00 | S 89°52'38.0\" E | 89°52'38.0\" |
| 123 | S 89°52'38.0\" E | 178.00 | 178.00 | S 89°52'38.0\" E | 89°52'38.0\" |
| 124 | S 89°52'38.0\" E | 178.00 | 178.00 | S 89°52'38.0\" E | 89°52'38.0\" |
| 125 | S 89°52'38.0\" E | 178.00 | 178.00 | S 89°52'38.0\" E | 89°52'38.0\" |
| 126 | S 89°52'38.0\" E | 178.00 | 178.00 | S 89°52'38.0\" E | 89°52'38.0\" |
| 127 | S 89°52'38.0\" E | 178.00 | 178.00 | S 89°52'38.0\" E | 89°52'38.0\" |
| 128 | S 89°52'38.0\" E | 178.00 | 178.00 | S 89°52'38.0\" E | 89°52'38.0\" |
| 129 | S 89°52'38.0\" E | 178.00 | 178.00 | S 89°52'38.0\" E | 89°52'38.0\" |
| 130 | S 89°52'38.0\" E | 178.00 | 178.00 | S 89°52'38.0\" E | 89°52'38.0\" |