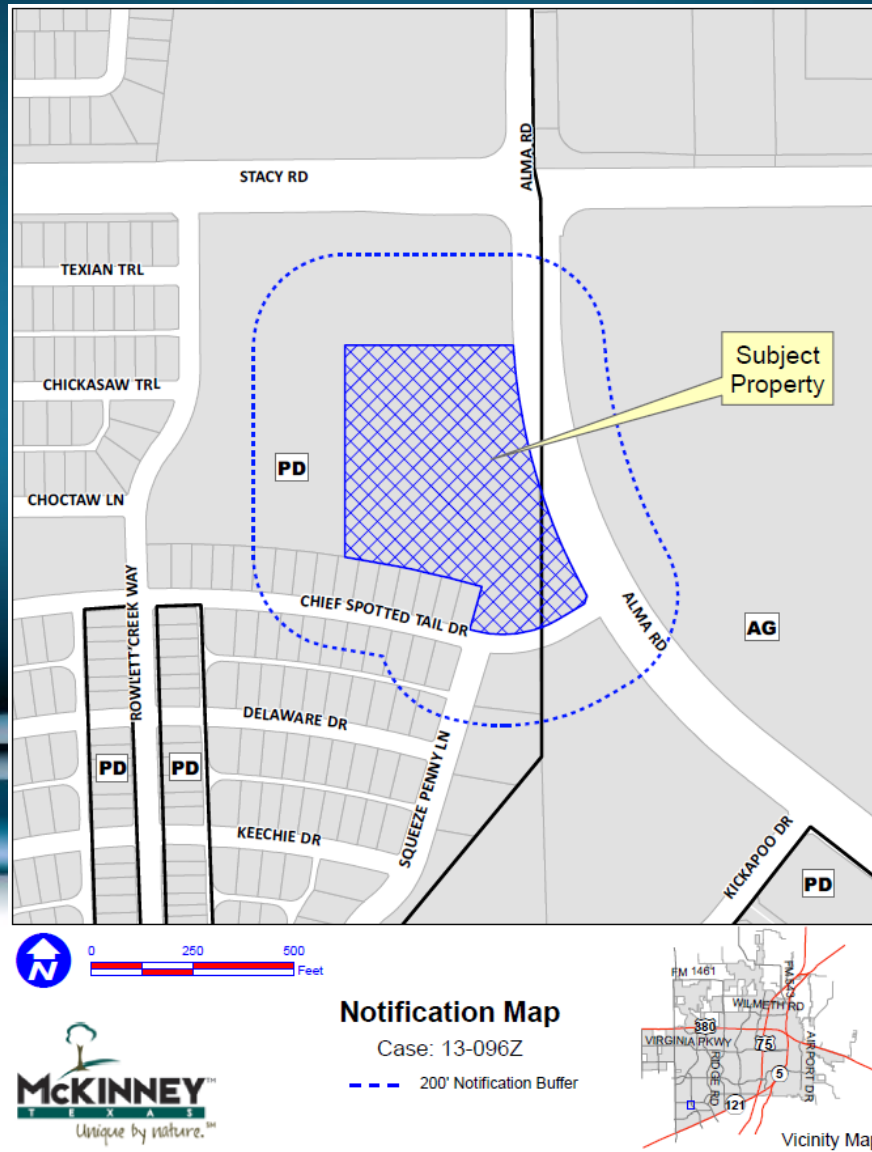


Case No. 13-096Z

Tuscarora Assisted and Independent Living



Location Map



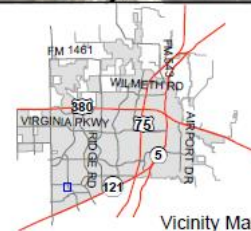
Aerial Exhibit



Notification Map

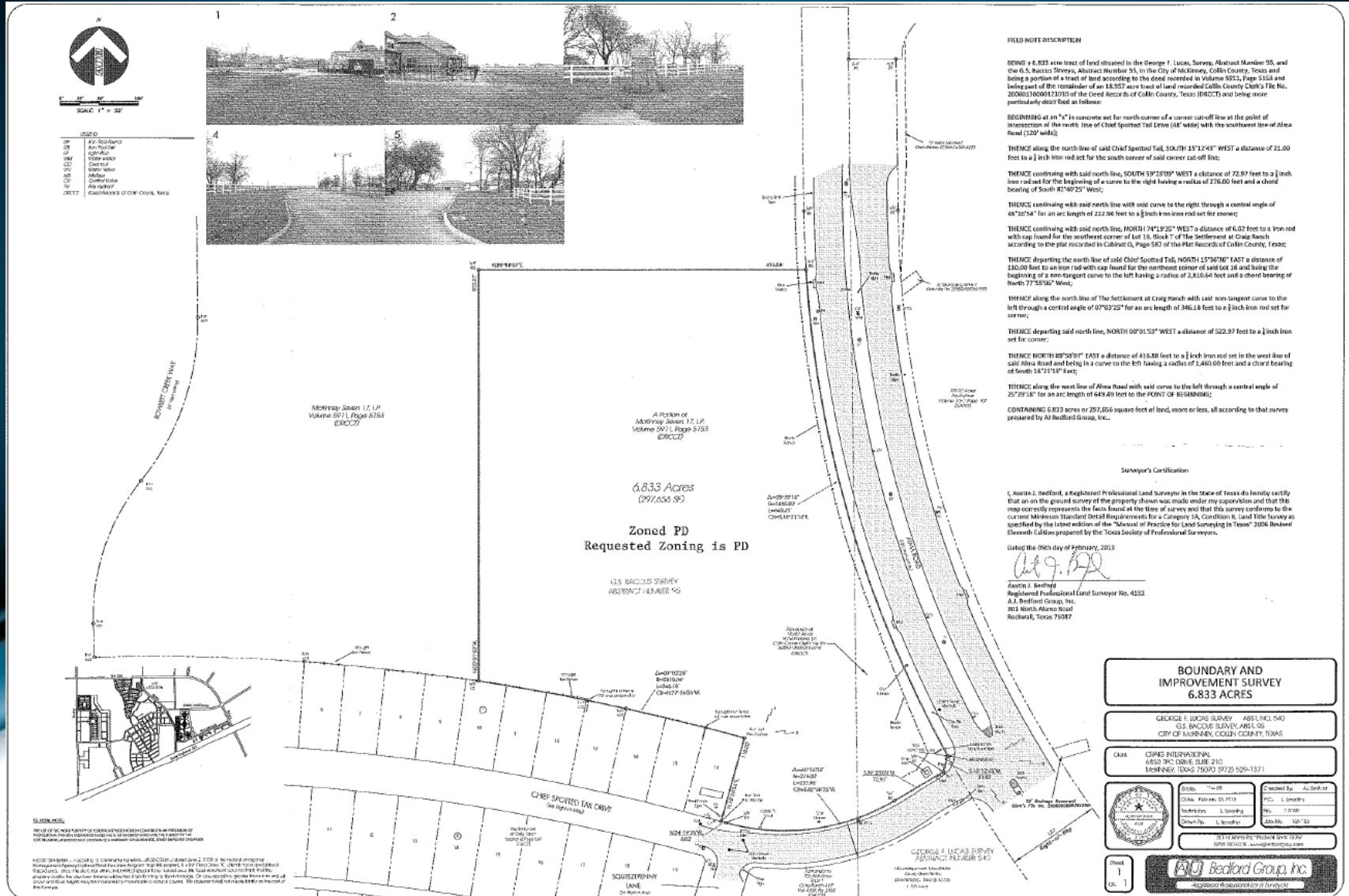
Case: 13-096Z

--- 200' Notification Buffer



Vicinity Map

Proposed Boundary Exhibit



Proposed Concept Plan



1. TOTAL SITE AREA: 8.81 ACRES (39,351 SF)
 2. CURRENT ZONING: PLANNED DEVELOPMENT (PD01-02-01)
 3. BUILDING SETBACK: FRONT-2', 2' REAR-10', SIDE-10'
 4. LANDSCAPE SETBACK: NO SETBACK REQUIREMENTS
 5. MAX BUILDING HEIGHT: 47' (SEE EXTERIOR BUILDING ELEVATIONS, SHEET AN-0201AAR0201)

6. BUILDING AREA:

LEVEL 1	=	45,301	GSP
LEVEL 2	=	29,300	GSP
LEVEL 3	=	24,977	GSP
TOTAL	=	99,578	GSP

7. UNIT TYPES:

RESID & SKILLED NURSING FACILITY (SNF)			
276	RESIDENTIAL	=	48 UNITS
302	SEMI-PRIVATE ROOM	=	3 UNITS
ASSISTED LIVING (AL)			
432	STUDIO	=	12 UNITS
496	1 BRD BATH	=	33 UNITS
724	1 BRD BATH + DEN	=	3 UNITS
MEMORIAL CARE INCL			
TOTAL			= 117 UNITS

Dekker Perich Sabatini
 7401 Jefferson NE Suite 100
 Albuquerque, NM 87115
 505.761-1700
 Fax: 505.761-1132
 www.dpsab.com

ARCHITECT

ENGINEER

PERMITTED USES

1. ASSISTED LIVING AND INDEPENDENT LIVING

RECEIVED
 By Kathy Wright at 10:41 am, Jun 14, 2013

LEGEND

SYMBOL	DESCRIPTION
---	PROPERTY LINE
- - - -	LANDSCAPE SETBACK
→	TRAFFIC FLOW
■	LANDSCAPE AREA

VICINITY MAP

NOT TO SCALE



TUSCARORA AT CRAIG RANCH
 Alma & Stacy Rd.
 McKinney, Texas

REVISIONS

△	
△	
△	

DRAWN BY: SY
 REVIEWED BY: RVV
 DATE: 05.24.13
 PROJECT NO.: 13-0499
 DRAWING NAME: SITE PLAN
 13-0962

SHEET NO. **AS-101**
 1 OF 3

Proposed Elevations

GENERAL NOTES

1. AVERAGE FINISH GRADE AT APPROXIMATELY 8' BELOW FINISH FLOOR ELEVATION
2. SYNTHETIC STONE TOTALS APPROXIMATELY 35% COVERAGE



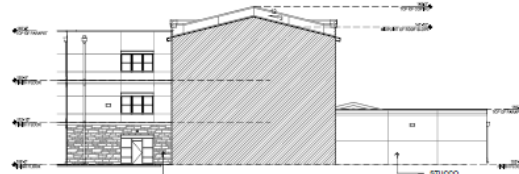
D1 BUILDING C-1 & C-2 - EAST ELEVATION

1/8" = 1'-0"
 STUCCO COVERAGE: APPROX. 432 S.F.
 SYNTHETIC STONE COVERAGE: APPROX. 2,194 S.F.



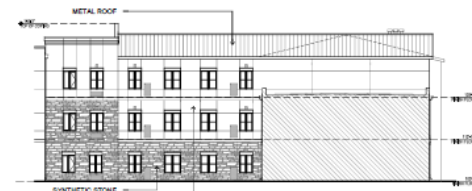
C1 BUILDING B - WEST ELEVATION

1/8" = 1'-0"
 STUCCO COVERAGE: APPROX. 92 S.F.
 SYNTHETIC STONE COVERAGE: APPROX. 324 S.F.



C2 BUILDING B - WEST ELEVATION

1/8" = 1'-0"
 STUCCO COVERAGE: APPROX. 1,561 S.F.
 SYNTHETIC STONE COVERAGE: APPROX. 362 S.F.



C4 BUILDING C-1 - NORTH ELEVATION

1/8" = 1'-0"
 STUCCO COVERAGE: APPROX. 1,304 S.F.
 SYNTHETIC STONE COVERAGE: APPROX. 622 S.F.



B1 BUILDING B - EAST ELEVATION

1/8" = 1'-0"
 STUCCO COVERAGE: APPROX. 3,829 S.F.
 SYNTHETIC STONE COVERAGE: APPROX. 2,317 S.F.



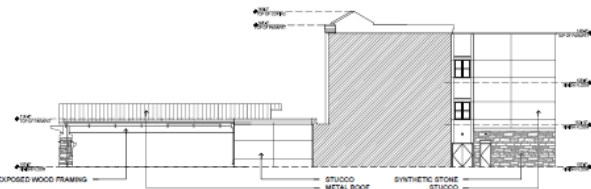
B3 BUILDING B - NORTH ELEVATION

1/8" = 1'-0"
 STUCCO COVERAGE: APPROX. 1,008 S.F.
 SYNTHETIC STONE COVERAGE: APPROX. 565 S.F.



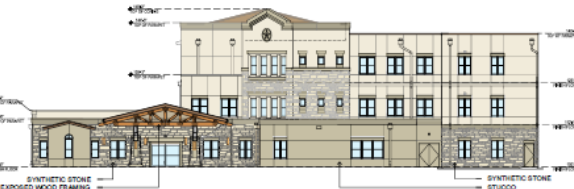
B4 BUILDING B - WEST ELEVATION

1/8" = 1'-0"
 STUCCO COVERAGE: APPROX. 2,386 S.F.
 SYNTHETIC STONE COVERAGE: APPROX. 1,273 S.F.



A1 BUILDING A - NORTH ELEVATION

1/8" = 1'-0"
 STUCCO COVERAGE: APPROX. 1,265 S.F.
 SYNTHETIC STONE COVERAGE: APPROX. 356 S.F.



A3 BUILDING A - EAST ELEVATION

1/8" = 1'-0"
 STUCCO COVERAGE: APPROX. 3,747 S.F.
 SYNTHETIC STONE COVERAGE: APPROX. 1,273 S.F.

RECEIVED
 By Kathy Wright at 8:22 am, May 14, 2013



Proposed Elevations

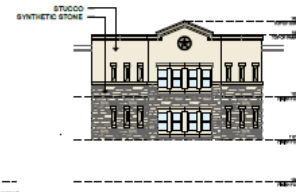
GENERAL NOTES

1. AVERAGE FINISH GRADE AT APPROXIMATELY 6" BELOW FINISH FLOOR ELEVATION
2. SYNTHETIC STONE TOTALS APPROXIMATELY 35% COVERAGE



C1 BUILDINGS A & C-1 - SOUTH ELEVATION

1/8" = 1'-0"
STUCCO COVERAGE: APPROX. 4,323 S.F.
SYNTHETIC STONE COVERAGE: APPROX. 2,859 S.F.



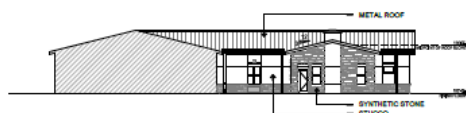
C5 BUILDING A - SOUTHEAST ELEVATION

1/8" = 1'-0"
STUCCO COVERAGE: APPROX. 383 S.F.
SYNTHETIC STONE COVERAGE: APPROX. 156 S.F.



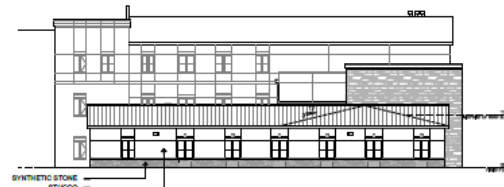
B1 BUILDINGS C-1 & C-2 - WEST ELEVATION

1/8" = 1'-0"
STUCCO COVERAGE: APPROX. 8,414 S.F.
SYNTHETIC STONE COVERAGE: APPROX. 1,814 S.F.



A1 BUILDING C-2 - SOUTH ELEVATION

1/8" = 1'-0"
STUCCO COVERAGE: APPROX. 325 S.F.
SYNTHETIC STONE COVERAGE: APPROX. 321 S.F.



A3 BUILDING C-2 - NORTH ELEVATION

1/8" = 1'-0"
STUCCO COVERAGE: APPROX. 729 S.F.
SYNTHETIC STONE COVERAGE: APPROX. 721 S.F.

RECEIVED

By Kathy Wright at 8:22 am, May 14, 2013

