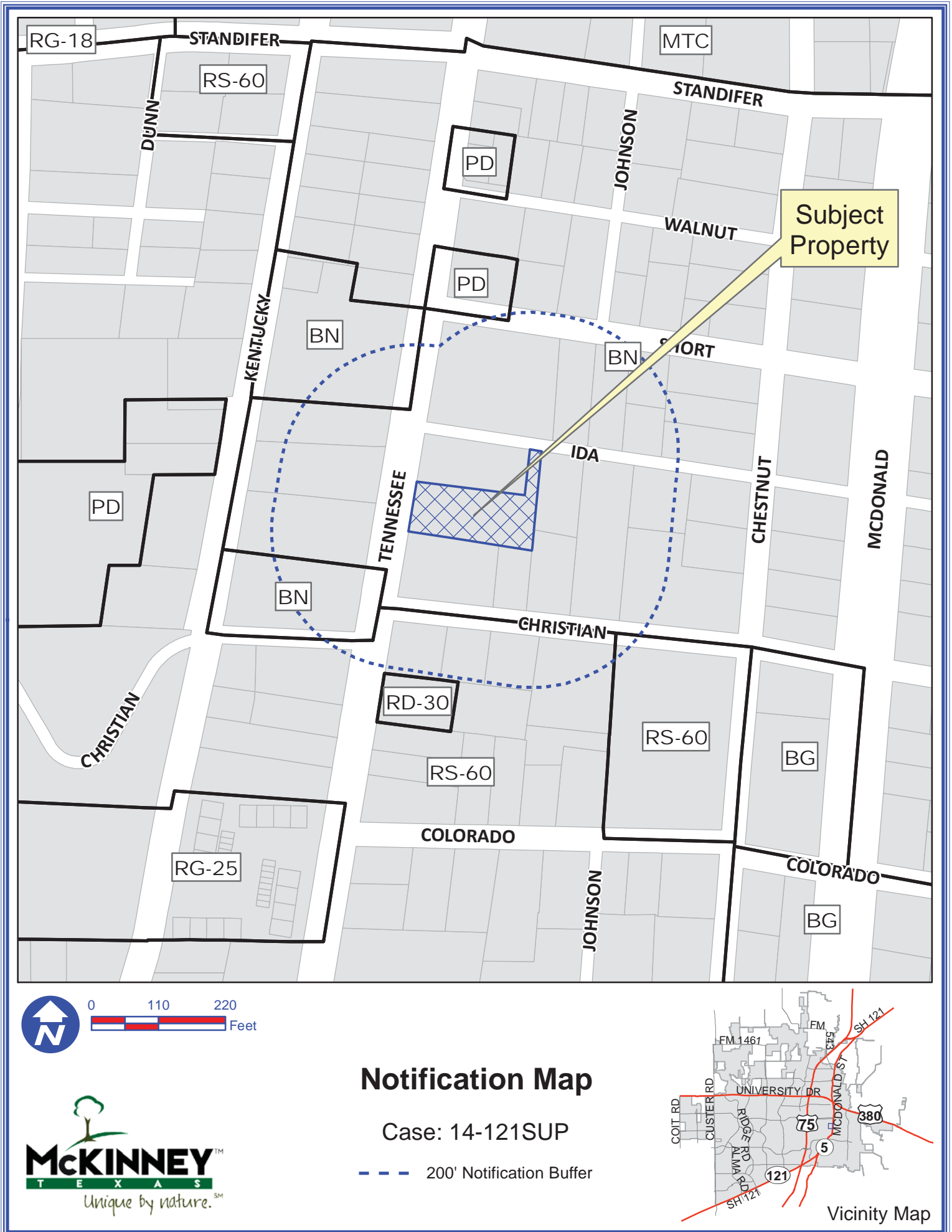
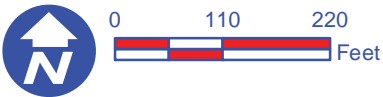


Exhibit A



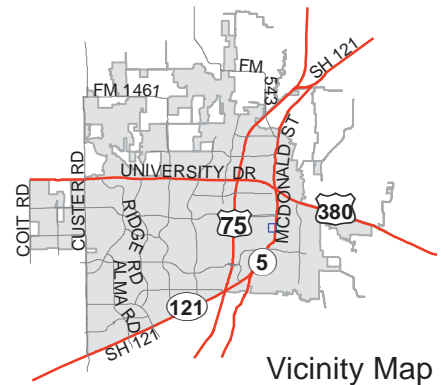
Path: S:\MCKGIS\Notification\Projects\2014\14-121SUP.mxd



Notification Map

Case: 14-121SUP

--- 200' Notification Buffer



DISCLAIMER: This map and information contained in it were developed exclusively for use by the City of McKinney. Any use or reliance on this map by anyone else is at that party's risk and without liability to the City of McKinney, its officials or employees for any discrepancies, errors, or variances which may exist.

Exhibit B

**SPURGIN
& ASSOCIATES
ARCHITECTS**



04/28/14

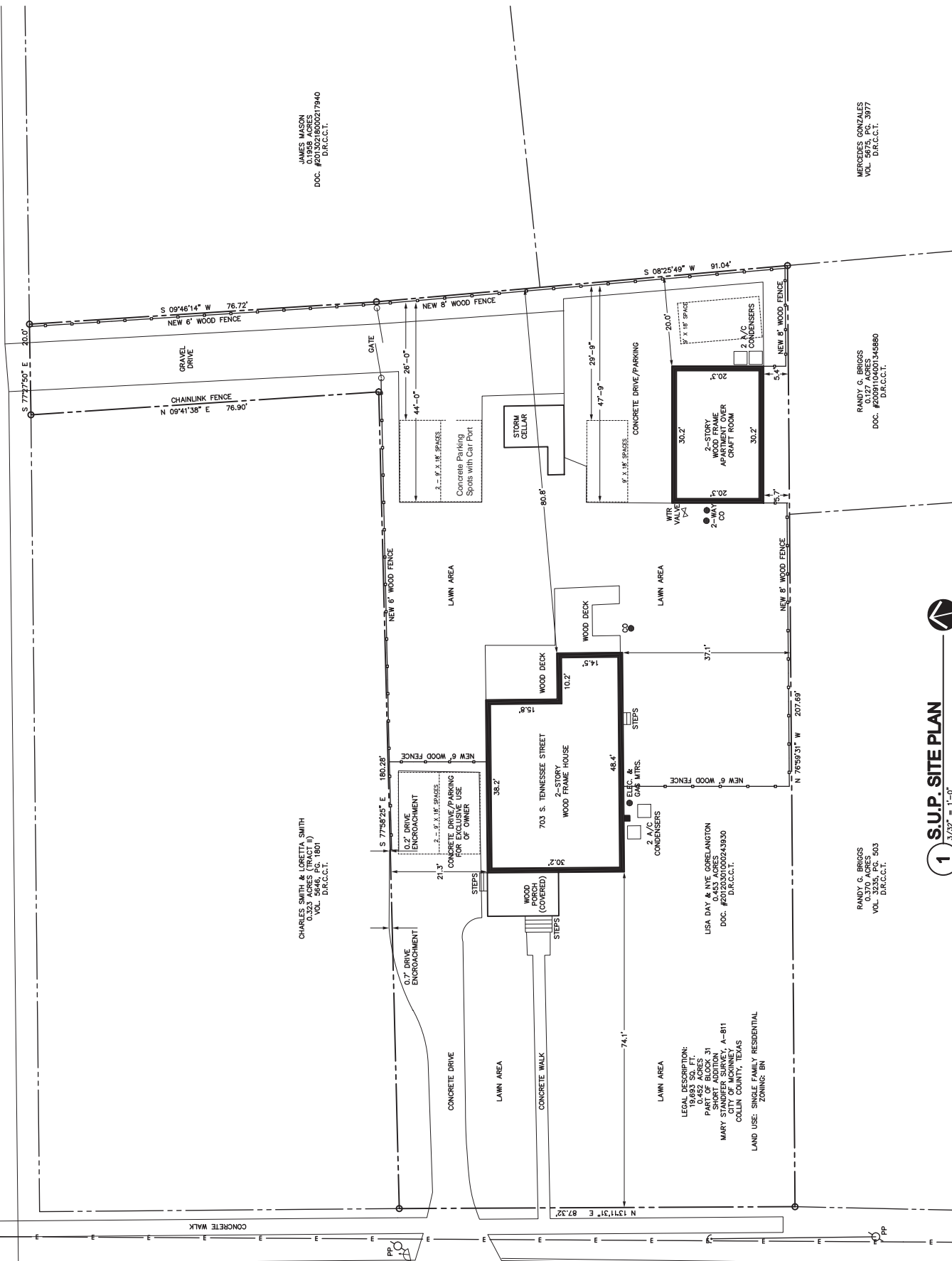
S.U.P. SITE PLAN
**SOUTHERN
CHIC
RETREAT
(BAKER
& B)**
703 S. TENNESSEE ST.
MCKINNEY, TEXAS

SHEET TITLE

PROJECT NUMBER
1405
ISSUE DATE
APRIL 2014
REVISION DATE
MAY 15, 2014
SHEET NUMBER

SP1

IDA STREET
(10'± ASPHALT ROAD - 20' R.O.W.)



JAMES MASON
0.1958 ACRES
DOC. #20091000217940
D.R.C.C.T.

MERCEDES GONZALES
VOL. 5675, P.C. 3877
D.R.C.C.T.

RANDY G. BRIGGS
0.127 ACRES
DOC. #20091000134580
D.R.C.C.T.

CHARLES SMITH & LORETTA SMITH
0.323 ACRES (TRACT II)
VOL. 3535, P.C. 503
D.R.C.C.T.

RANDY G. BRIGGS
0.370 ACRES
VOL. 3535, P.C. 503
D.R.C.C.T.

LEGAL DESCRIPTION:
14.42 ACRES
PART OF BLOCK 31
MARY STANDEE SURVEY, A-811
CITY OF MCKINNEY, TEXAS
COLLIN COUNTY, TEXAS
LAND USE: SINGLE FAMILY RESIDENTIAL
ZONING: BN

1 S.U.P. SITE PLAN
3/32" = 1'-0"

APPLICANT INFORMATION:	
MONICA BAKER	8000 W. WINDY ROAD, SUITE 100
FRISCO, TEXAS 75034	972-821-6444
monicarobaker@gmail.com	
PARKING INFORMATION:	
B&B PARKING RATIO:	1 SPACE PER GUEST ROOM
RESIDENT PARKING:	2 SPACES
GUEST PARKING:	4 GUEST ROOMS = 4 SPACES
PARKING PROVIDED:	2 SPACES
CONCRETE PARKING:	2 SPACES
GUEST PARKING:	4 SPACES
PROPERTY INFORMATION:	
GROSS AREA:	19,693 SF (0.452 ACRES)
NO EASEMENTS; NET AREA = GROSS AREA	
IMPERVIOUS AREA:	
STRUCTURES:	1453 SF
HOUSE:	143 SF
APARTMENT:	143 SF
CONCRETE DRIVE:	512 SF
TOTAL STRUCTURES:	2208 SF
PAVING:	
NORTH PAVING:	1283 SF
WALKWAY:	195 SF
EAST PAVING:	1408 SF
TOTAL PAVING:	2886 SF
TOTAL IMPERVIOUS AREA:	5094 SF

TENNESSEE STREET
(60' R.O.W.)