

# Sheraton Hotel & Event Center

BECK

## Detailed Information for Exterior Enhancements Price Breakouts



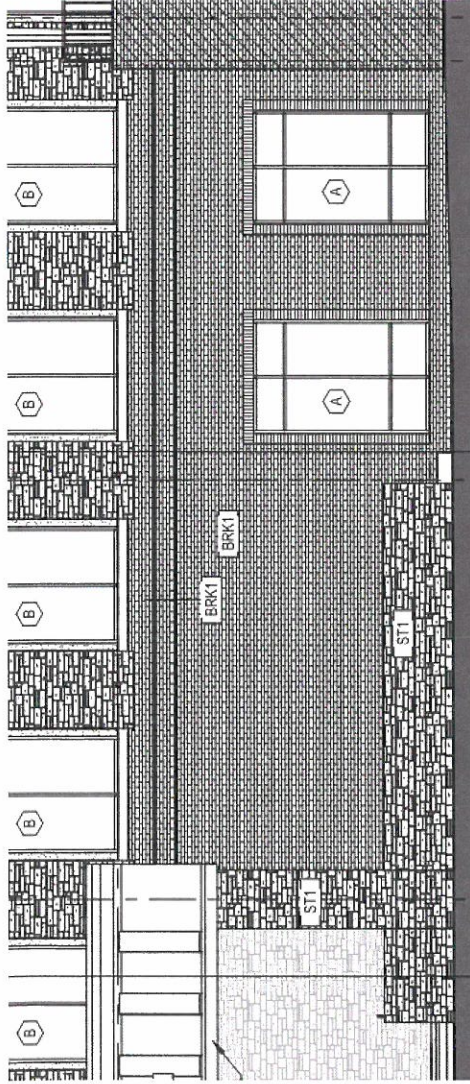
These exterior enhancements were included in the current scope at the request of the City of McKinney, and are above and beyond initial requirements. Pricing for each item is needed to substantiate the added costs to the project. Please note that some items could be removed from the program, and thus the pricing would be deducted from the submitted program and price. The following pages outline each of these enhancements, and correspond to a line item on the bid tab for the breakout pricing.

At the end of this document are two sheets of elevations representing the initial requirements, provided for your reference and takeoffs. These are not replacements for the current set incorporating the enhancements, and are noted as such.



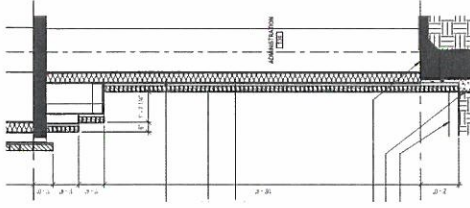
# A. Alignment of North Entry Face and Change Brick to Stone

Revise elevation from this...

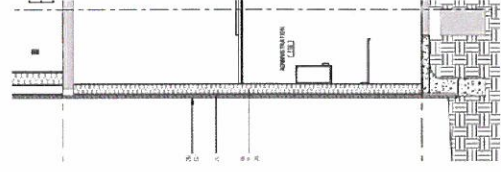
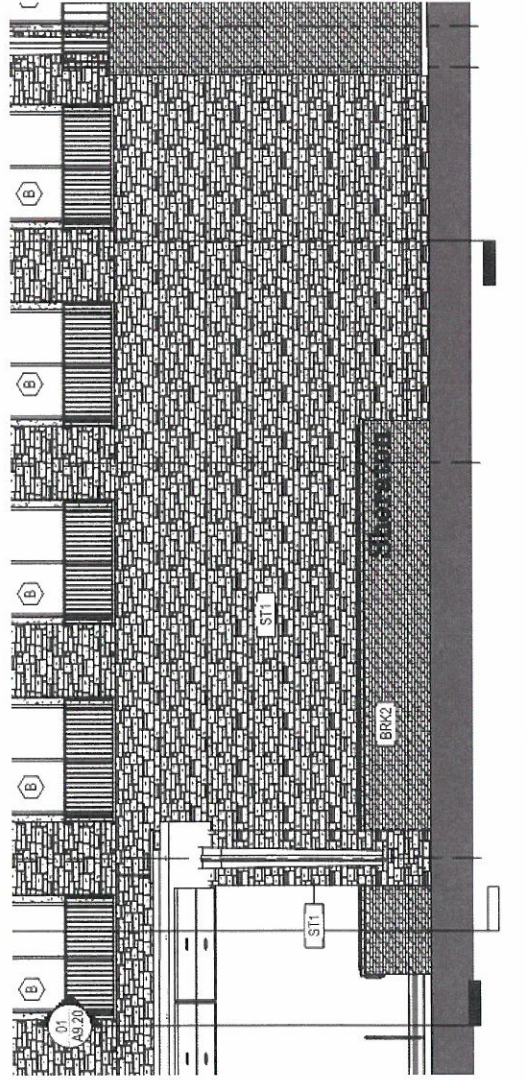


## Scope Notes:

- Change Brick to Stone Veneer
- Include area over canopy.
- Delete plaster soffit from 'old' (see section)
- Move windows to Admin (net zero delta)
- Add grade beam and SOG per new section.
- Add floorspace inside.



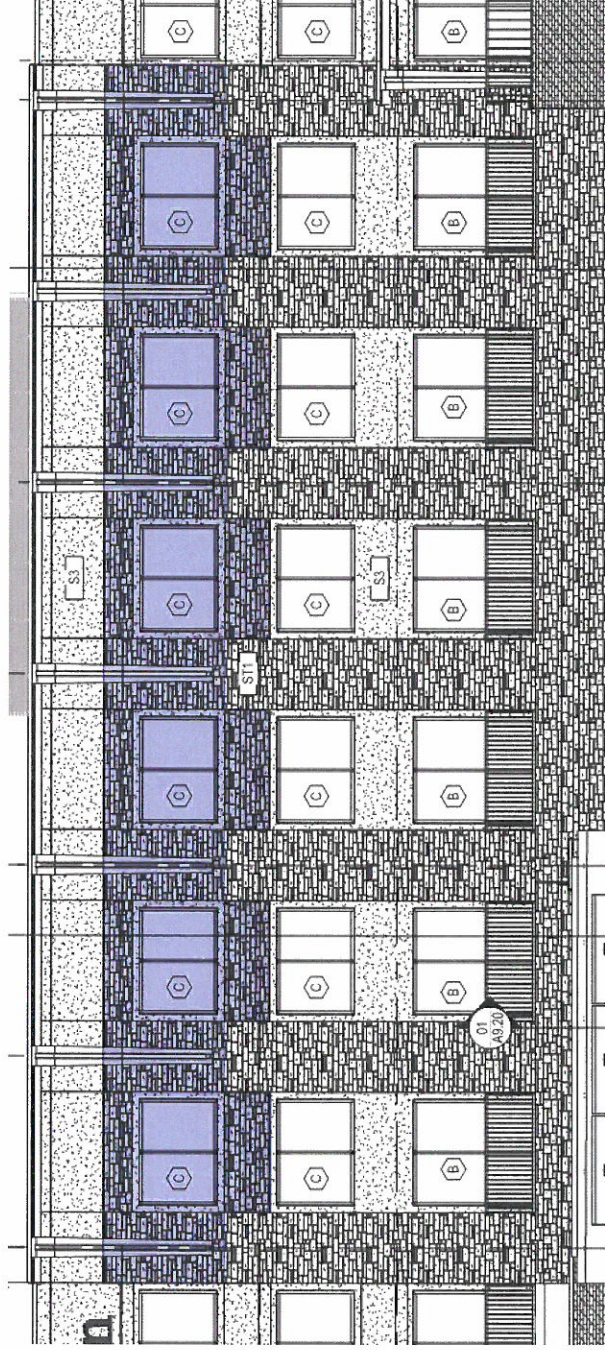
To this...





## B. Add Stone / Remove Plaster at Level 4 Windows

Occurs at both the North (main entry) elevation and the South Courtyard elevation, shown below. Area for breakout is shaded in blue, below.



North Elevation



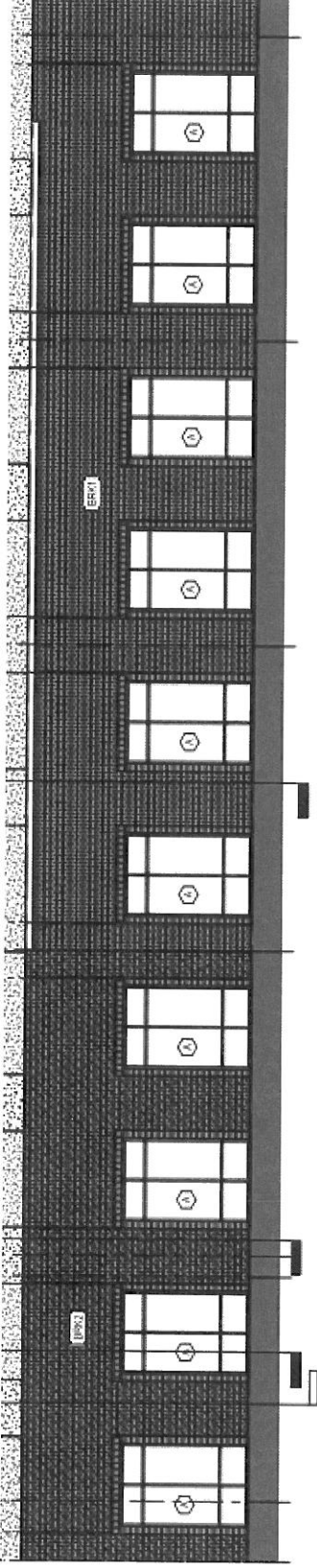
South Courtyard Elevation

### Scope Notes:

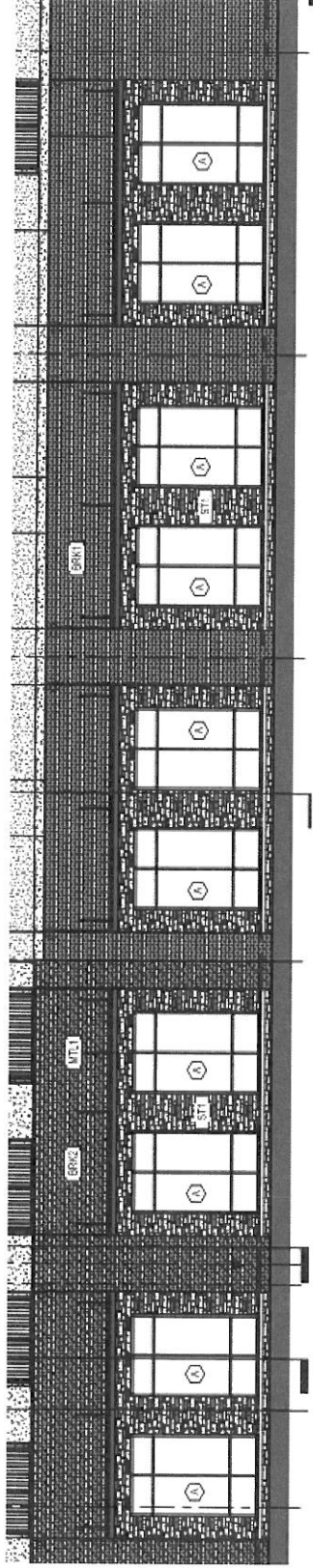
- Add the stone veneer and delete the plaster finish at the shaded areas.
- Include any misc steel for headers, including embeds. Steel to be painted.
- Flashing and waterproofing details.

## C. Group Level One Guestroom Windows Together

Revise West Hotel elevation from this...



To this...



### Scope Notes

The windows stay the same size in this item, but grouped as pairs by moving closer together.

Brick is changed to stone veneer at the window pairs. Brick detailing remains, but is now at each grouping, not each individual window.

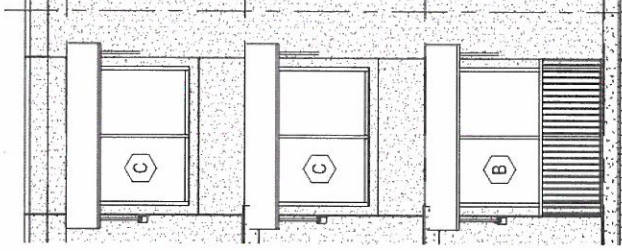
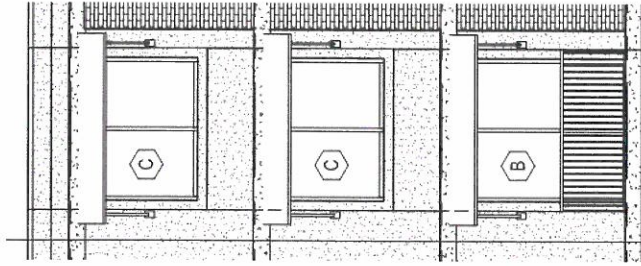
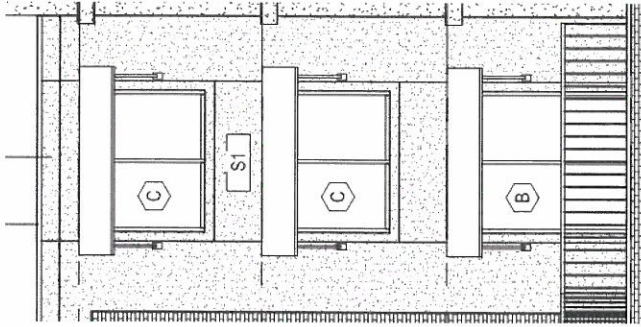
Add misc steel for headers, including embeds. Steel to be painted.

Flashing and waterproofing details.

**NOTE:** The above represents the west elevation only (10 windows). Same item is repeated on the courtyard side (8 windows) and north elevation (4 windows) for a total of 22 windows, or 11 groupings.

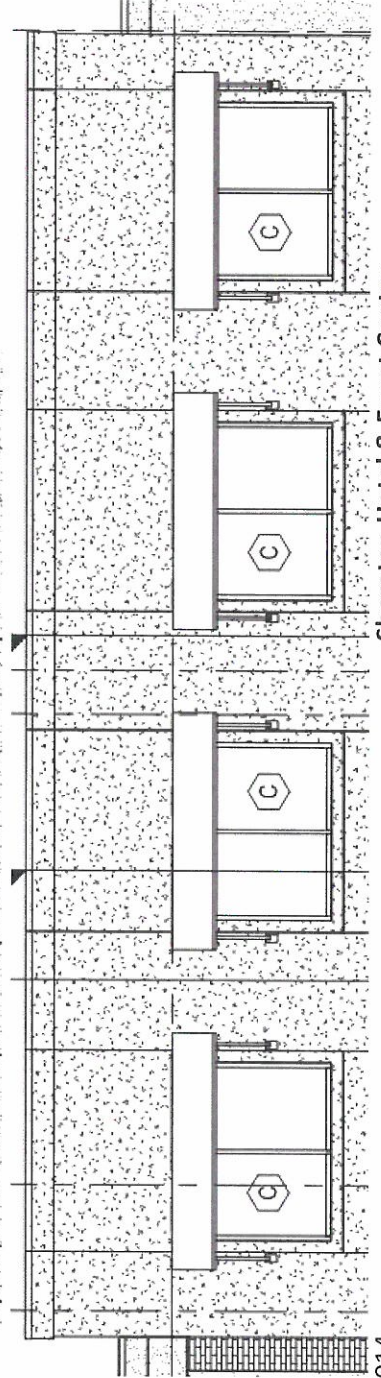
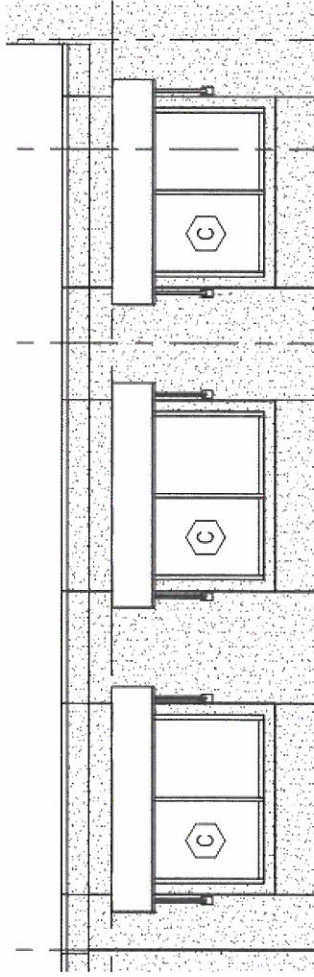


## D. Add Awnings

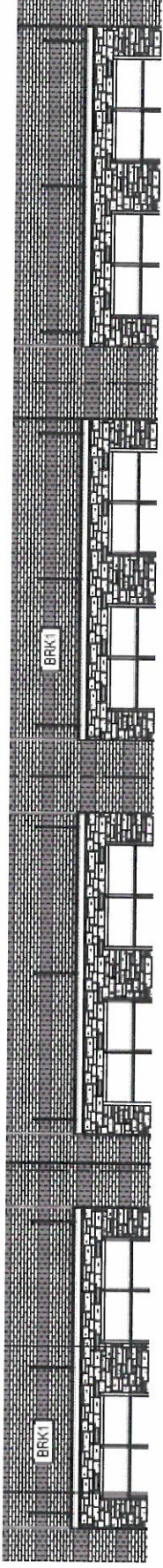


### Scope Notes

Add awnings over upper level windows on various elevations.  
Include framing reinforcements and blocking.



### E. Add Shade Canopies at Level 1 Windows (including support)



#### Scope Notes

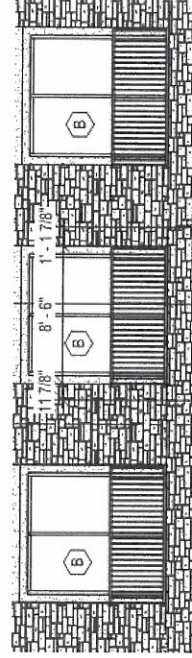
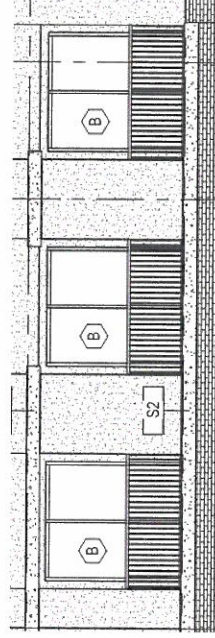
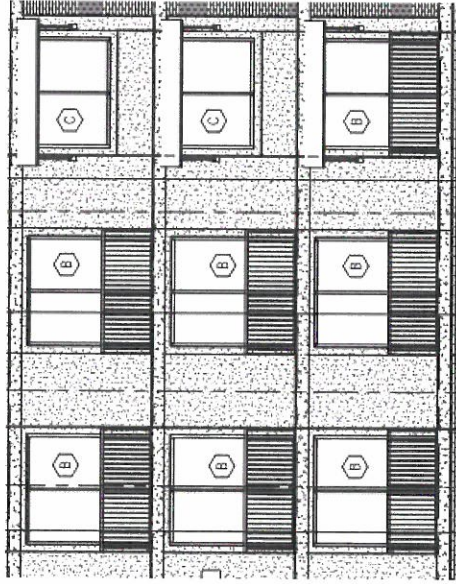
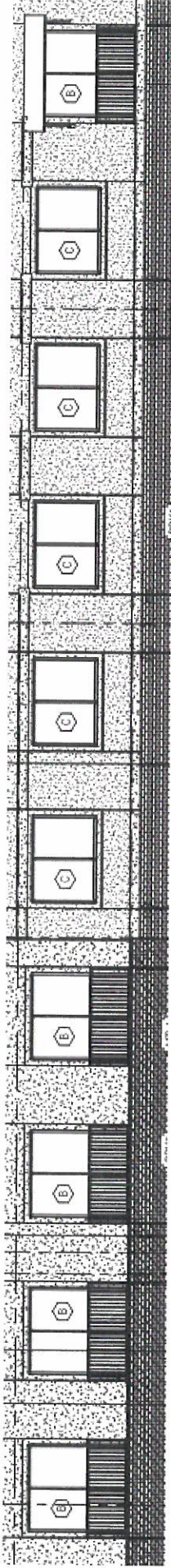
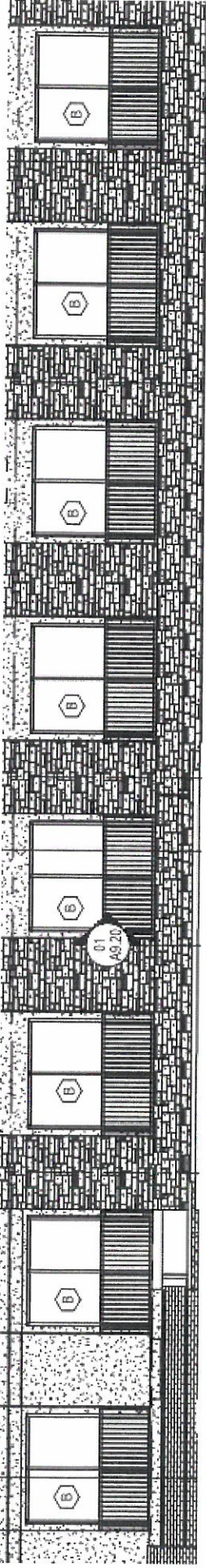
Add canopies over level 1 windows on various elevations.

Include framing reinforcements and blocking.

Some canopies are larger in courtyard (4) than at typical locations (11).



**F. Add Juliet Balconies & Enlarge Windows**



**Scope Notes**

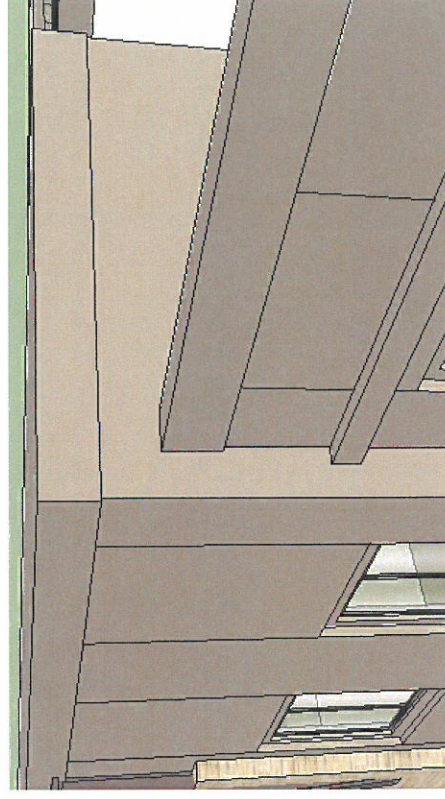
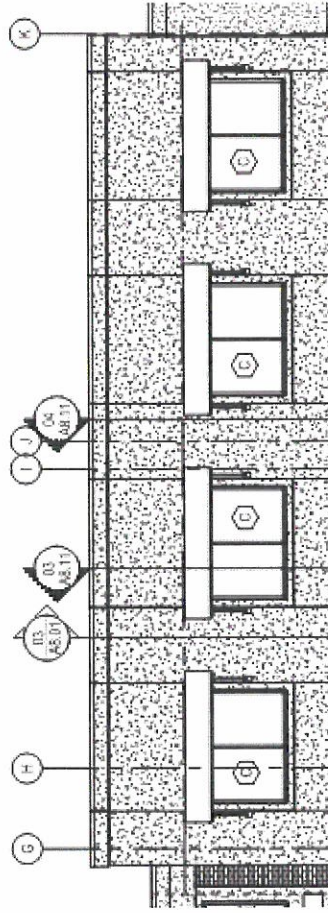
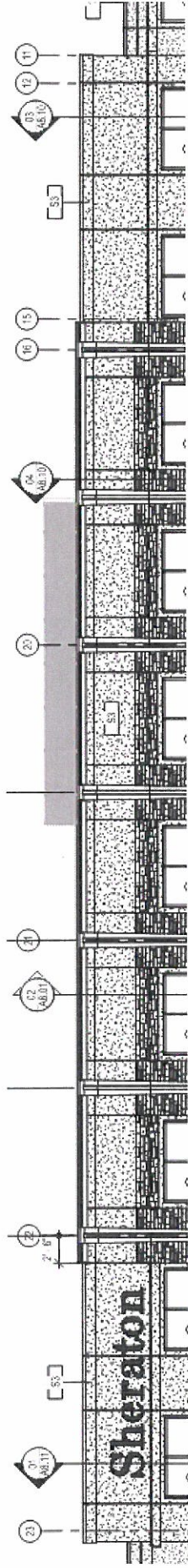
Add ornamental railing at various windows on hotel elevations.

At same locations, enlarge windows (Type B) in lieu of standard window (Type C).

Noted as 26 locations



## G. Raise Parapets



### Scope Notes

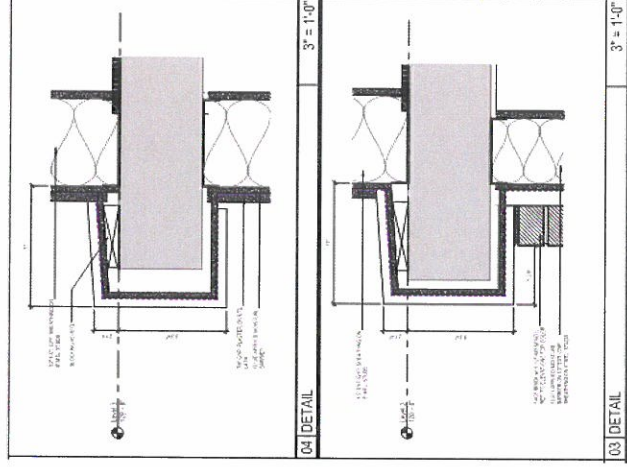
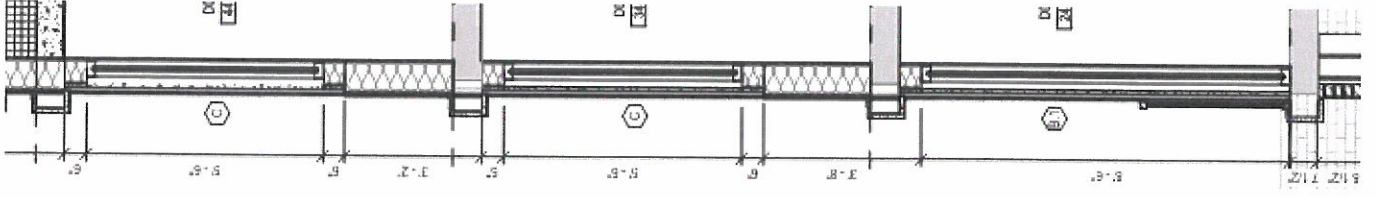
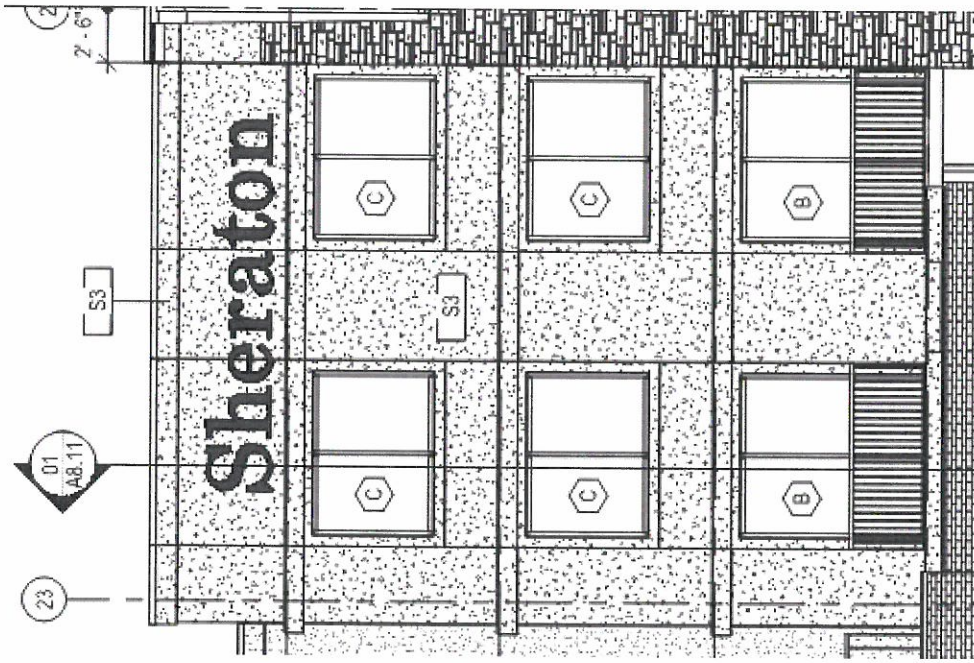
Raise parapets on West and North elevations by 4'-0".

Also included is the 'return' of the parapet walls. Each return wall is 4'-8" in length.

Costs included should be entire wall framing system, support steel, and added roofing on back side.



H. Added Vertical Plaster Columns—Add Façade Bumpouts at Slab Lines

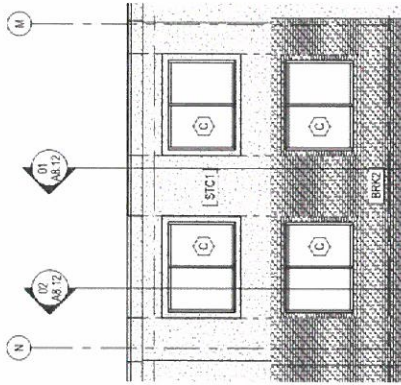


**Scope Notes**

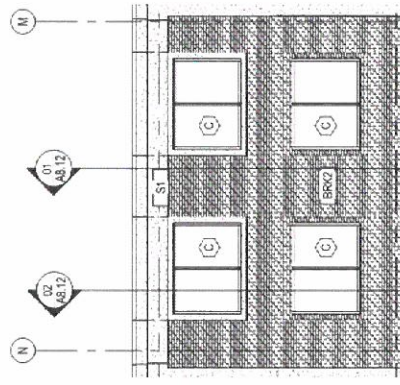
- Addition of façade bump out at floor slabs per details. Finish on bump outs to be plaster.
- Include all areas of bump outs in breakout.
- Costs included should be framing, sheathing, waterproofing and plaster finish.



# I. Change Courtyard Exterior Materials



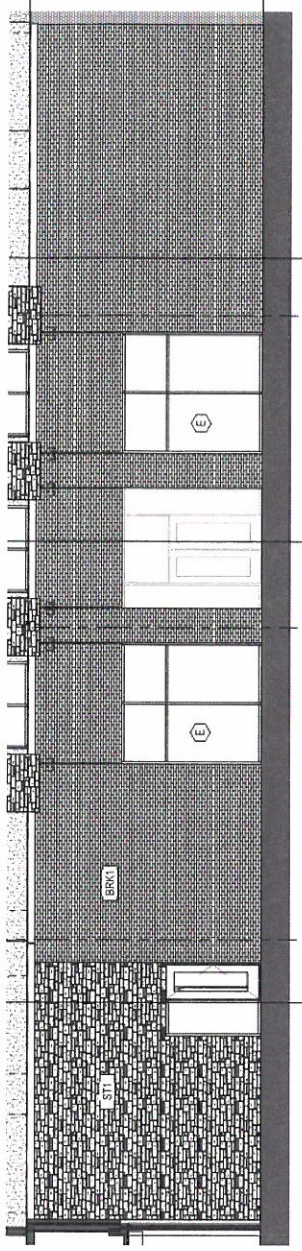
East Hotel Courtyard - Old



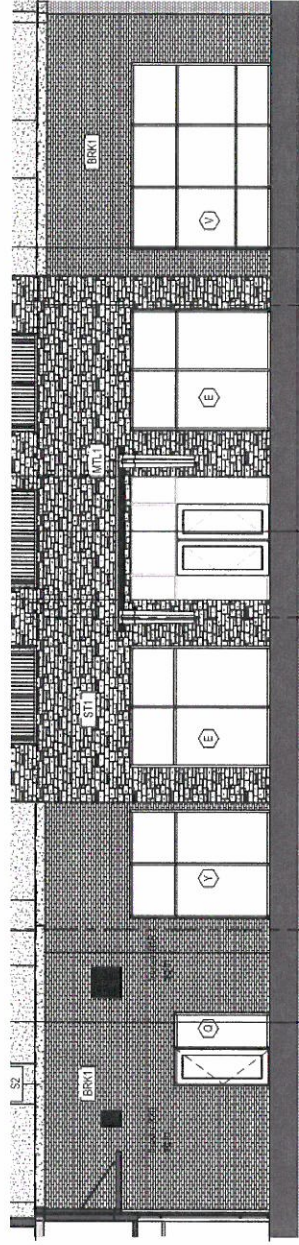
East Hotel Courtyard - New

## Scope Items

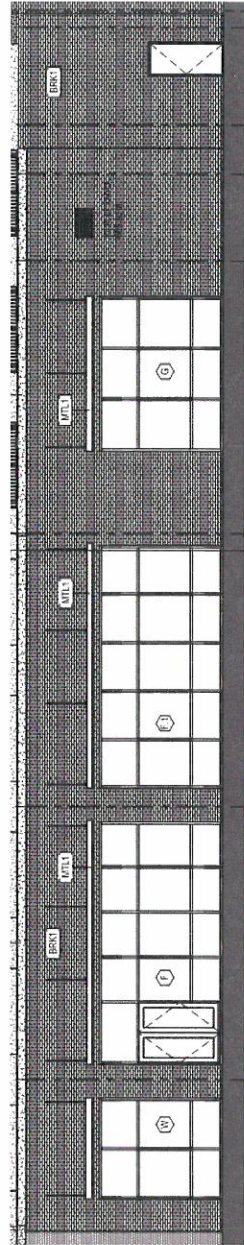
- Revised Brick Areas
- Revised Stone Veneer Areas
- Revised Glass Areas



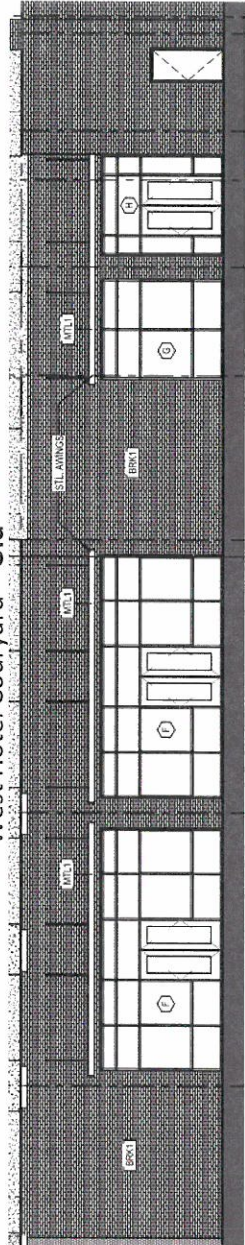
South Hotel Courtyard - Old



South Hotel Courtyard - New



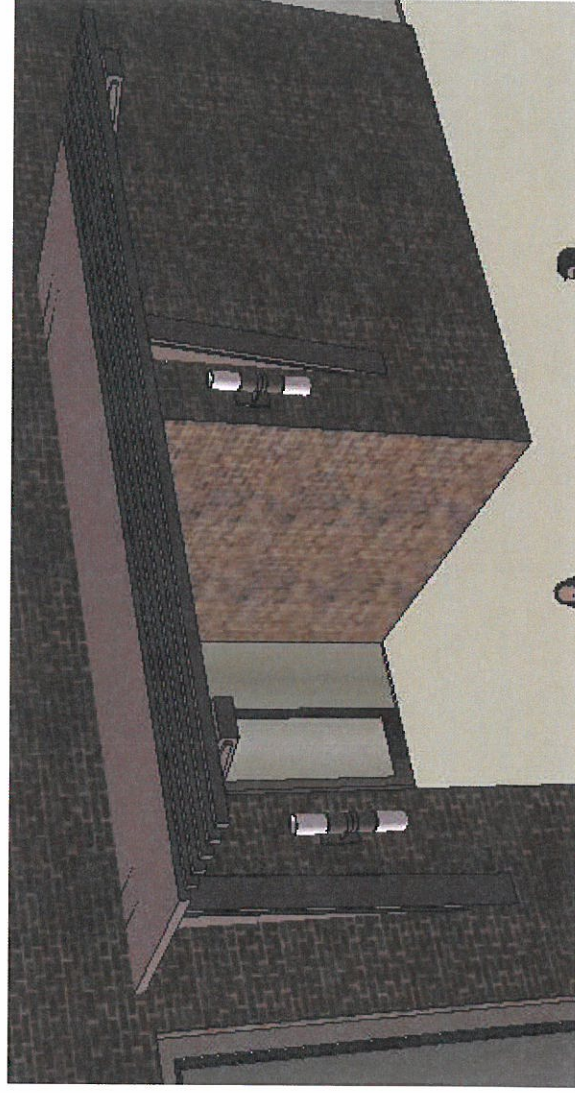
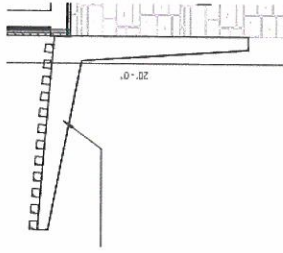
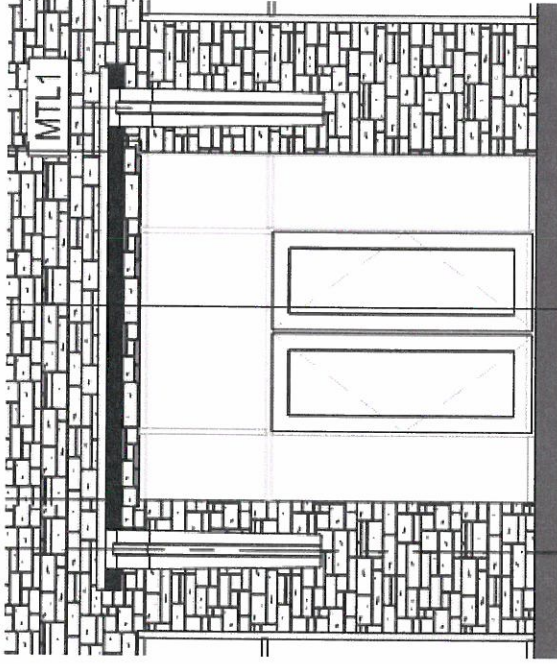
West Hotel Courtyard - Old



West Hotel Courtyard - New



## J. Add Canopy at Courtyard Entry

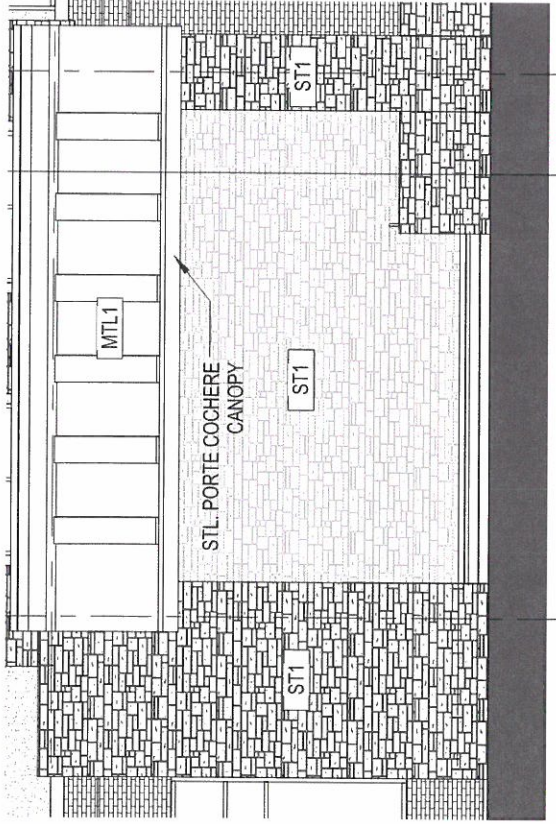


### Scope Notes

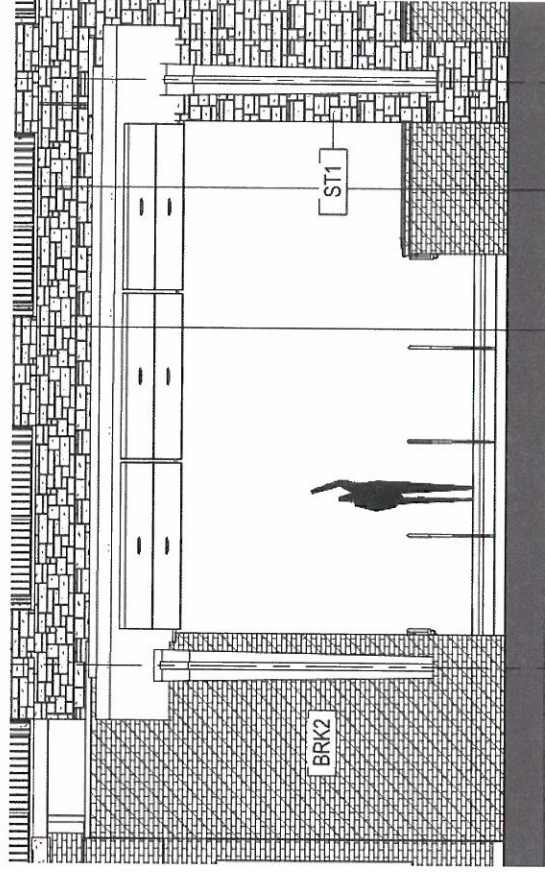
- All items associated with canopy to be included.
- Steel supports inside building not yet shown.



**K. Change Main Entry Exterior Materials**



Main Entry - Old



Main Entry - New

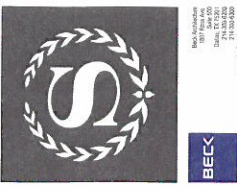
**Scope Notes**

- Brick to stone veneer revisions
- Stone veneer to brick revisions
- Stone to wood panels



Main Entry - New





1800 North Ave.  
 Chicago, IL 60610  
 Tel: 312.427.1000  
 Fax: 312.427.1000  
 www.sheraton.com



CURRENT SUBMISSION	
# DATE	REVISION
1	ISSUE FOR PERMITS, CODE & SELL

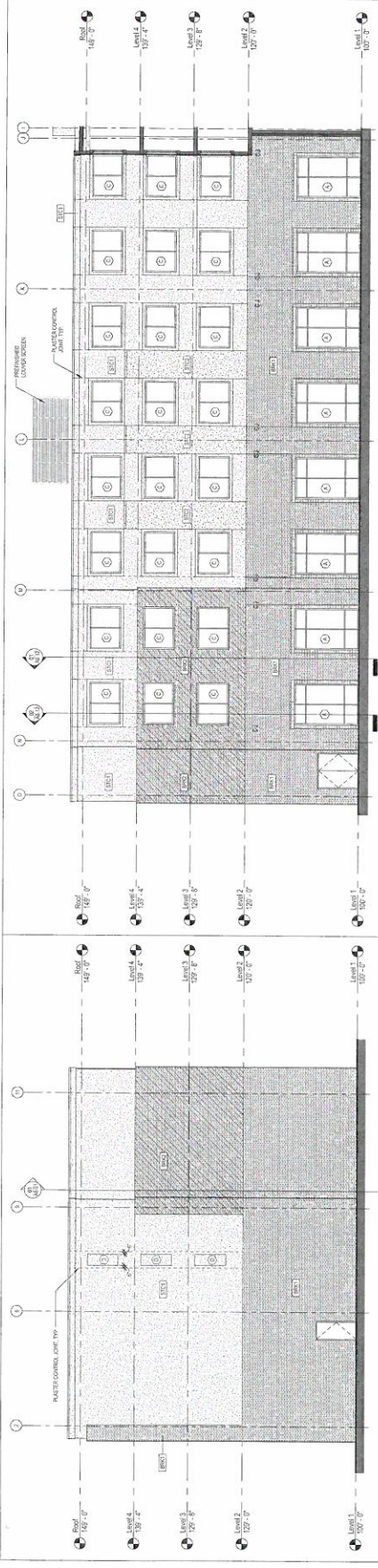
VOID - SHEET FOR  
 REFERENCE ONLY  
 IN USE OF  
 BREAKOUT  
 PRICING OF  
 EXTERIOR  
 ENHANCEMENTS

SHERATON HOTEL &  
 EVENT CENTER

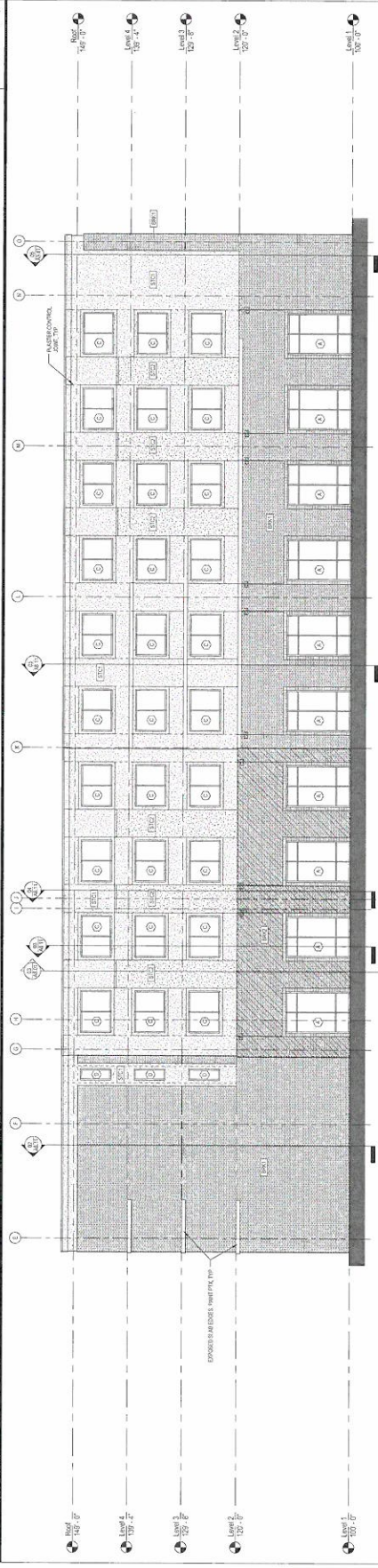
ENLARGED EXTERIOR  
 ELEVATIONS

167827  
 SHEET

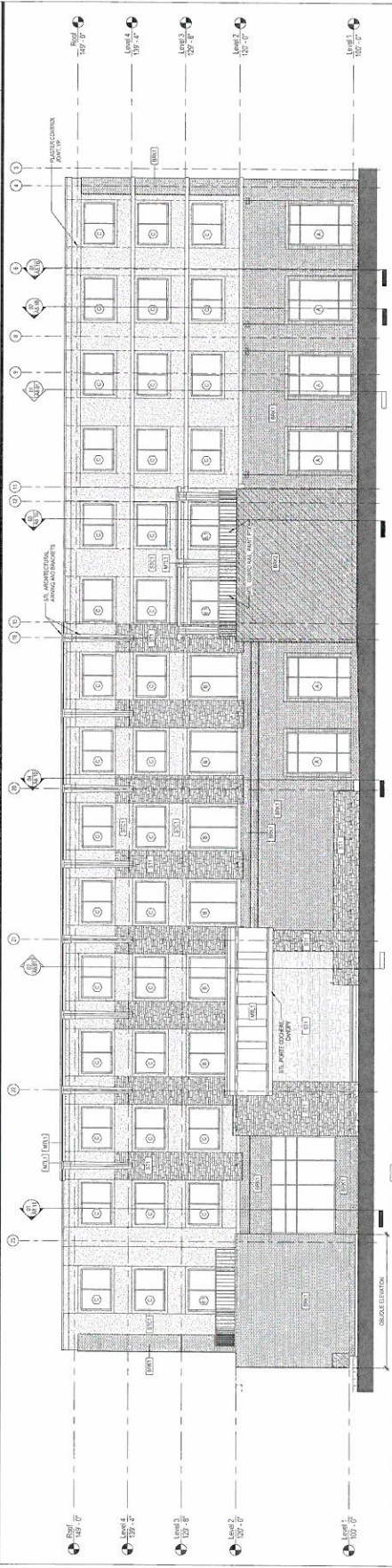
A7.10



04 SOUTH HOTEL ELEVATION-WEST WING  
 1/8" = 1'-0"



03 EAST HOTEL COURTYARD ELEVATION  
 1/8" = 1'-0"



02 WEST HOTEL ELEVATION  
 1/8" = 1'-0"



01 NORTH HOTEL ELEVATION  
 1/8" = 1'-0"





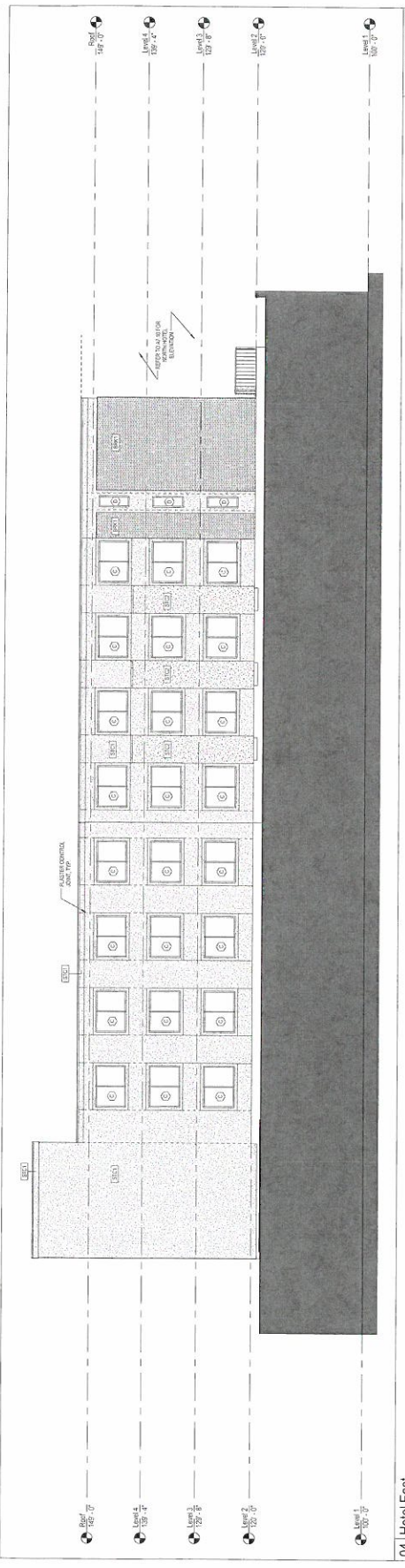
BECC  
 BECK CONSTRUCTION COMPANY  
 14000 N. W. 22nd Ave.  
 Suite 671 33rd  
 Fort Lauderdale, FL 33310  
 754.571.0000  
 www.beccconstruction.com

CURRENT SUBMISSION	
#	DATE

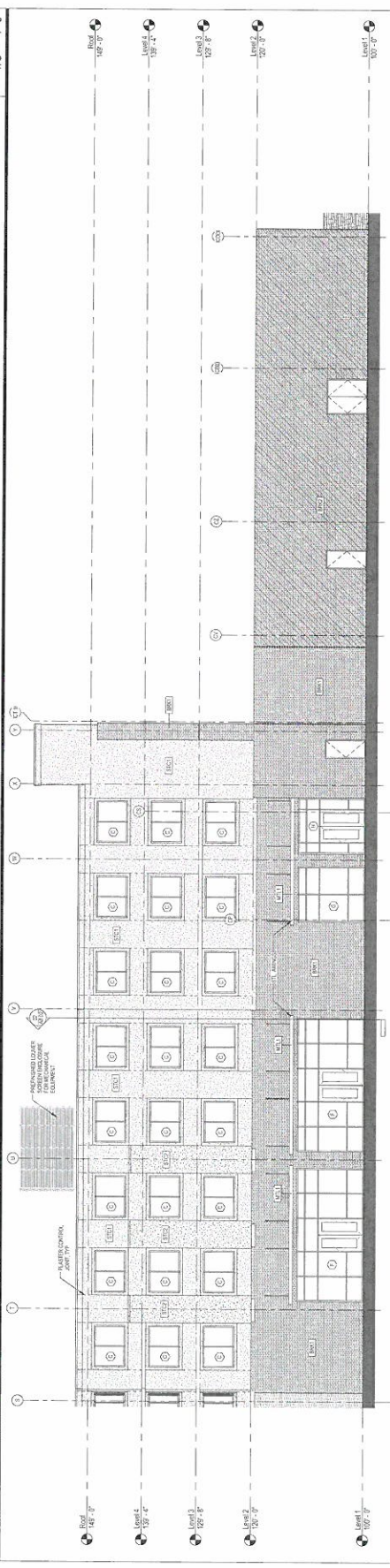
VOID - SHEET FOR  
 REFERENCE ONLY  
 IN USE OF  
 BREAKOUT  
 PRICING OF  
 EXTERIOR  
 ENHANCEMENTS

CURRENT SUBMISSION	
#	DATE

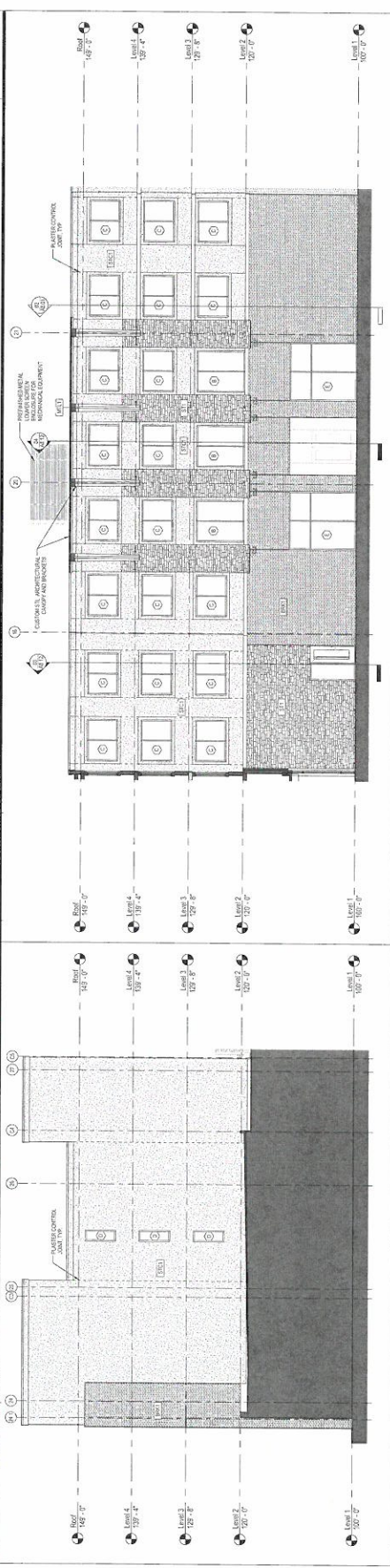
SHERATON HOTEL &  
 EVENT CENTER  
 ENLARGED EXTERIOR  
 ELEVATIONS



04 | Hotel East



03 | WEST HOTEL COURTYARD ELEVATION



02 | South Hotel - East Wing

1/8" = 1'-0"