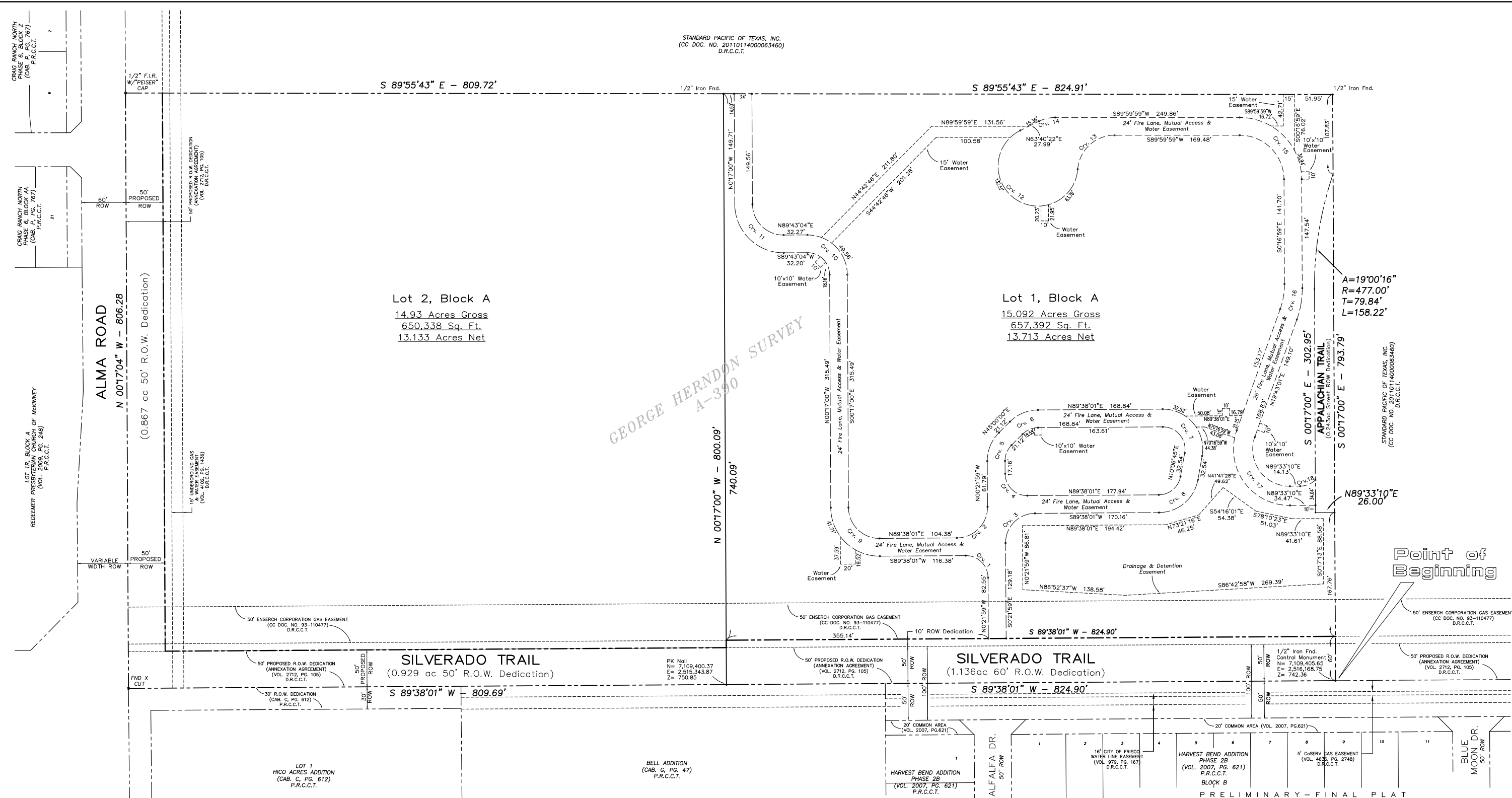


STANDARD PACIFIC OF TEXAS, INC.
(CC DOC. NO. 2011011400063460)
D.R.C.C.T.



NOTE:
1) Preliminary-Final Plat for Review Purposes Only.
2) All proposed lots situated in whole or in part within the city's corporate limits comply with the minimum size requirements of the governing zoning district.

BASIS OF BEARINGS:
Basis of Bearings being S 89°38'01" West, along the south line of deed to Gammon Partners I, L.P., as recorded in County Clerk Document No. 92-0077779, D.R.C.C.T.

	Inner	Outer		Inner	Outer
1	A=90°00'00" R=30.00' T=30.00' L=47.12'		6	A=44°38'01" R=30.00' T=12.31' L=23.37'	A=44°38'01" R=54.00' T=22.17' L=42.07'
2	A=90°00'00" R=42.00' T=42.00' L=65.97'		7	A=100°28'44" R=30.00' T=36.06' L=52.61'	A=110°09'52" R=54.00' T=64.90' L=94.70'
3	A=90°00'00" R=40.00' T=40.00' L=62.83'		8	A=79°31'16" R=30.00' T=24.96' L=41.64'	A=79°31'16" R=54.00' T=44.93' L=74.95'
4	A=90°00'00" R=30.00' T=30.00' L=47.12'		9	A=90°04'59" R=42.00' T=42.06' L=66.03'	A=90°04'59" R=66.00' T=66.10' L=103.77'
5	A=45°21'59" R=30.00' T=12.54' L=23.75'	A=45°21'59" R=54.00' T=22.57' L=42.76'	10	A=89°37'13" R=30.00' T=29.80' L=46.93'	A=89°37'13" R=54.00' T=53.73' L=84.56'

	Inner	Outer		Inner	Outer
11	A=90°00'00" R=42.00' T=42.00' L=65.97'	A=90°00'00" R=66.00' T=66.00' L=103.67'	16	A=20°00'00" R=100.00' T=17.63' L=34.91'	A=20°00'00" R=124.00' T=21.86' L=43.28'
12	A=239°15'40" R=54.00' T=94.94' L=225.50'		17	A=110°09'52" R=50.00' T=71.63' L=96.14'	A=110°09'52" R=76.00' T=108.87' L=146.13'
13	A=85°35'18" R=50.00' T=46.29' L=74.69'		18	A=42°56'27" R=30.00' T=11.90' L=22.48'	
14	A=26°19'38" R=50.00' T=11.69' L=22.97'				
15	A=89°43'02" R=30.00' T=59.70' L=93.95'	A=89°43'02" R=84.00' T=83.59' L=131.53'			

COMSTOCK ELEMENTARY SCHOOL ADDITION

Lot 1 & 2, Block A
30.022 Acres Situated In The
GEORGE HERNDON SURVEY ~ ABST. 390
MCKINNEY, COLLIN COUNTY, TEXAS

Owner
Frisco Independent School District
6942 Maple Street
Frisco Texas 75034
Telephone 469 633-6000

Owner
Gammon Partners I, LTD
5220 Spring Valley Road, Suite 404
Dallas Texas 75254
Telephone 214 368-5900

Surveyor
Mollenkopf Land Surveying
1216 N. Central Expressway, Ste 203-B
McKinney, Texas 75070
Telephone 214 544-3334

Engineer
RLK Engineering, Inc.
111 West Main Street
Allen, Texas 75013
Telephone 972 359-1733

This plat was received by the Planning Department on May 27, 2011.