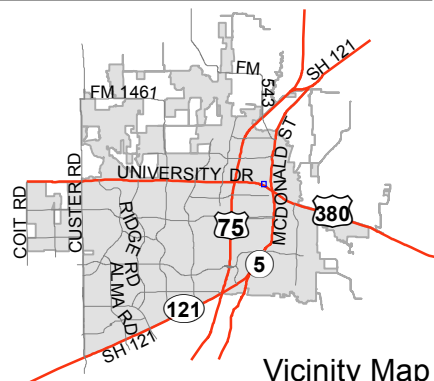


**Location Map**



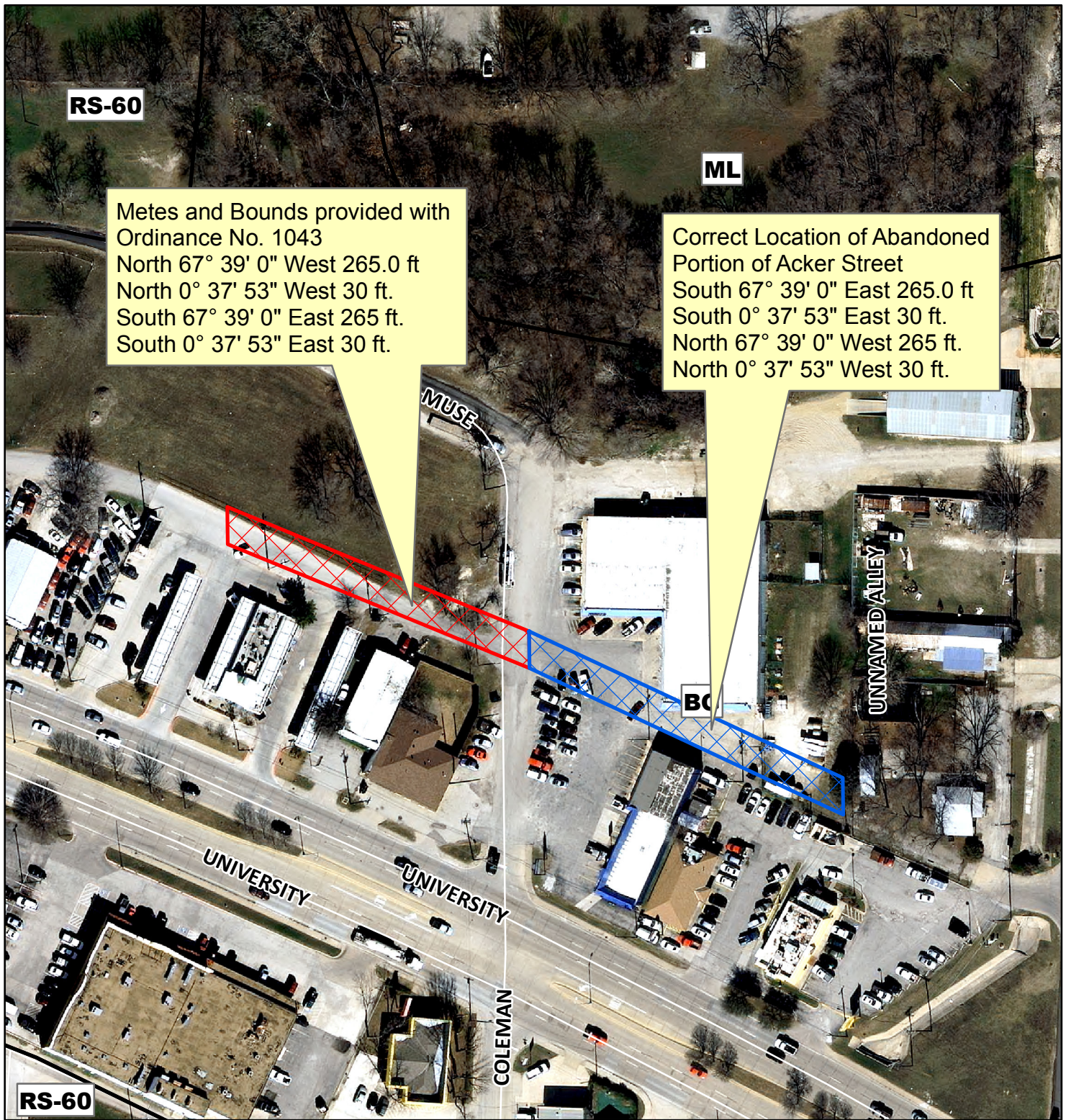
DISCLAIMER: This map and information contained in it were developed exclusively for use by the City of McKinney. Any use or reliance on this map by anyone else is at that party's risk and without liability to the City of McKinney, its officials or employees for any discrepancies, errors, or variances which may exist.

**RS-60**

Metes and Bounds provided with Ordinance No. 1043  
North 67° 39' 0" West 265.0 ft  
North 0° 37' 53" West 30 ft.  
South 67° 39' 0" East 265 ft.  
South 0° 37' 53" East 30 ft.

**ML**

Correct Location of Abandoned Portion of Acker Street  
South 67° 39' 0" East 265.0 ft  
South 0° 37' 53" East 30 ft.  
North 67° 39' 0" West 265 ft.  
North 0° 37' 53" West 30 ft.

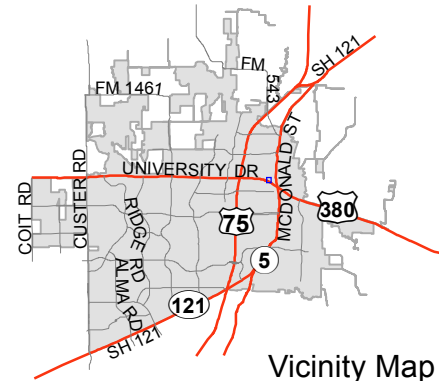


**RS-60**



0 60 120 Feet

### Location Map



DISCLAIMER: This map and information contained in it were developed exclusively for use by the City of McKinney. Any use or reliance on this map by anyone else is at that party's risk and without liability to the City of McKinney, its officials or employees for any discrepancies, errors, or variances which may exist.