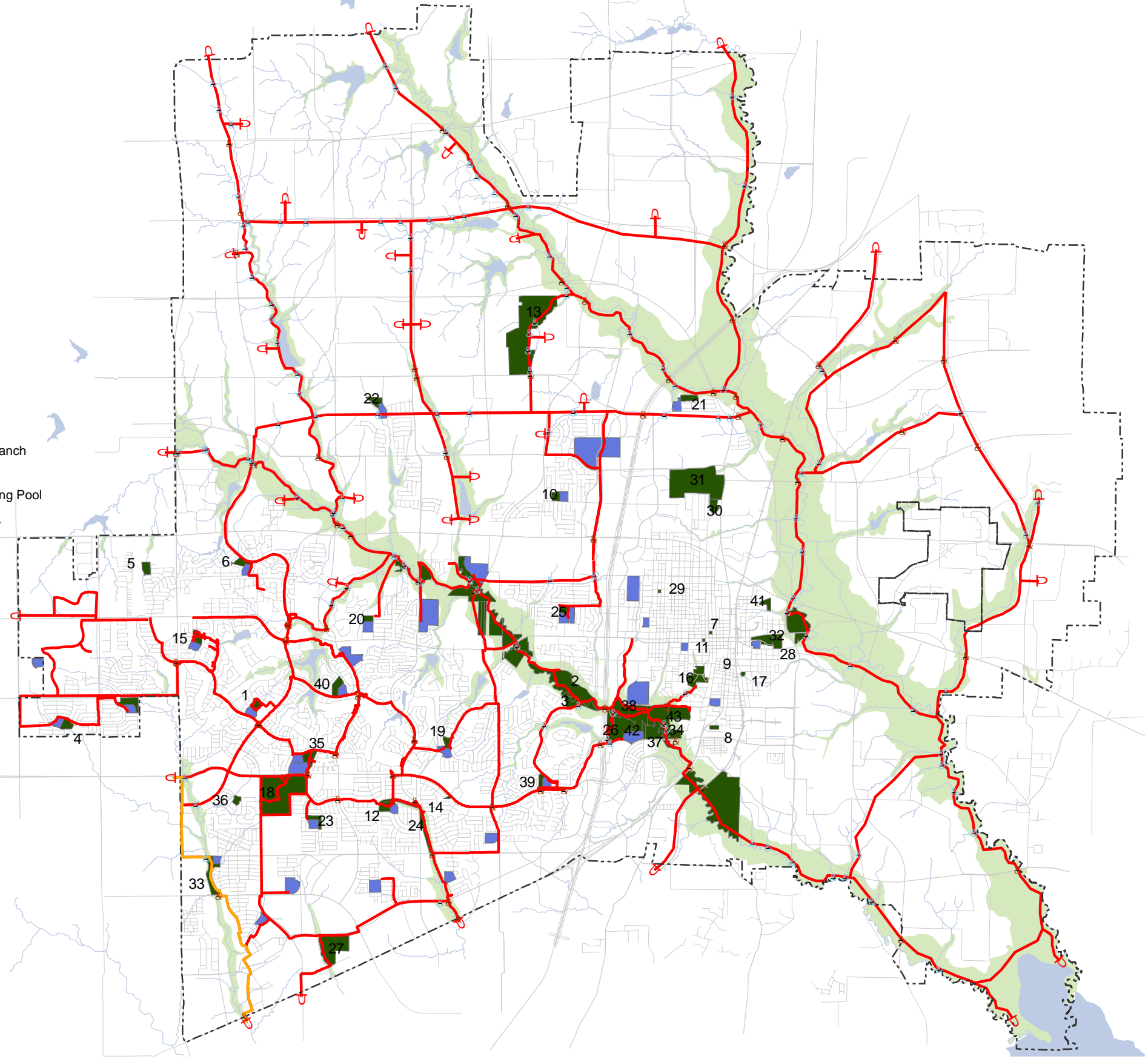


**PARKS AND FACILITIES**

1. A. Hardy Eubanks, Jr. Park
2. Al Ruschhaupt Soccer Complex
3. Alex Clark Disc Golf Course
4. Ash Woods Park
5. Aviator Park
6. Carey Cox Memorial Park
7. Central Park
8. Cottonwood Park
9. Day Labor Plaza
10. Dr. Charles B. McKissick Park
11. Dr. Glenn Mitchell Memorial Park
12. E. A. Randles Park
13. Erwin Park
14. Ezra Lee (Tinker) Taylor Park
15. Falcon Creek Park
16. Finch Park
17. Fitzhugh Park
18. Gabe Nesbitt Community Park
19. Hill Top Park
20. Horizon Park
21. Inspiration Park
22. Jim Ledbetter Park
23. John M. Whisenant Park
24. Katherine B. Winniford Park
25. Mary Will Craig Park
26. McKinney Community Center
27. McKinney Soccer Complex @ Craig Ranch
28. Mouzon Ball Fields
29. Murphy Park
30. North Park & Juanita Maxfield Swimming Pool
31. Oak Hollow Golf Course
32. Old Settlers' Park & Recreation Center
33. Rowlett Creek Park
34. Senior Recreation Center
35. Serenity Park
36. Tom Allen Jr. Park
37. Towne Lake Disc Golf
38. Towne Lake Park
39. Valley Creek Park
40. W. B. Finney Park
41. Wattle Park
42. Wilson Creek Nature Trail
43. Wilson Creek Softball Complex



**LEGEND**

- Bridge
- Off-Grade Crossing
- Six City Trail
- Extra-territorial Jurisdiction
- Hike and Bike Trails
- Rail Road
- Roads
- Parkland
- School Sites
- Lakes
- Creeks
- Flood Plain

\* Original Adoption 3-22-04 (Ordinance No. 2004-03-035)  
 \* Amendment #1: 10-18-05 - Revised sections of Ridge Road and Stonebridge Drive north of Bloomdale Road (Ordinance No. 05-10-133).  
 \* Amendment #2 4-4-06 - realigned the trail in the vicinity of the intersection of the Irving Water Distribution Line Easement and the East Fork of the Trinity River (Ordinance No. 2006-04-042).  
 \* Amendment #3 6-3-08 - Adding, relocating, and eliminating various hike and bike sections (Ordinance No. 2008-06-055).

Source: City of McKinney GIS Department Data

3 June 2008  
 FIGURE 9.3