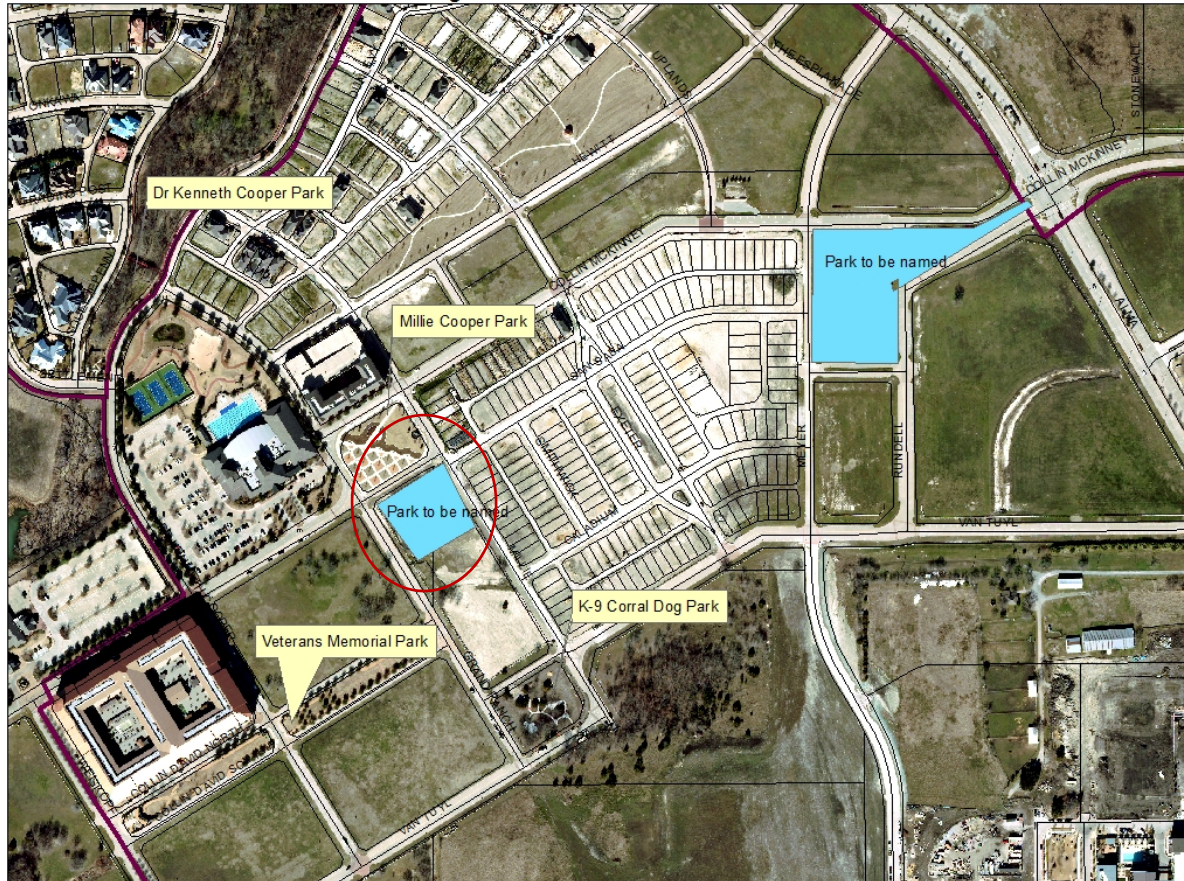


Craig Ranch Park Naming

Craig Ranch Town Center Parks



Craig Ranch Park Naming



Millie Cooper Park (existing)

Tract One
Craig Ranch II, L.P.
(VCM Partners, L.P.)
Volume 2 of 2, Page 22 of 24
(DRCT)

LEGEND

- (A) EXISTING TREE
- (B) EXISTING & PLANNED PLANTING (LOCATION OF EXISTING PLANTING SPACE)
- (C) PAVED WALKING (COORDINATION OF PATTERNS AT PAUSE / PARK)
- (D) CONCRETE STEPS
- (E) 2' F. CONCRETE SIDEWALK
- (F) STONE BENCH (SIMILAR TO PHASE I PARK SEATWALLS)
- (G) 2" X 4" SPLITS (SIMILAR TO PHASE I)
- (H) TABLE & CHAIRS PRESS (SIMILAR TO PHASE I)
- (I) BASKET BALL
- (J) ORNAMENTAL TREE
- (K) BUFFALO GRASS
- (L) DECOMPOSED GRANITE
- (M) LANDSCAPE BED (SIMILAR TO PLANTS USED ON EXISTING PARK)
- (N) SHADE
- (O) TANK
- (P) POTENTIAL PLAYGROUND LOCATION



Prepared for:
McKinney SEVEN 31, LP
5600 19th Street, Suite 104
McKinney, Texas 75070

Prepared by:
DCBA | LANDSCAPE ARCHITECTURE
730 East Park Boulevard | Suite 100
Plano, Texas 75074

DCBA
LANDSCAPE
ARCHITECTURE

NORTH

SCALE: 1" = 20'-0"

CONCEPTUAL DESIGN MILLIE COOPER PARK

McKINNEY | TEXAS

SEPTEMBER 2017

