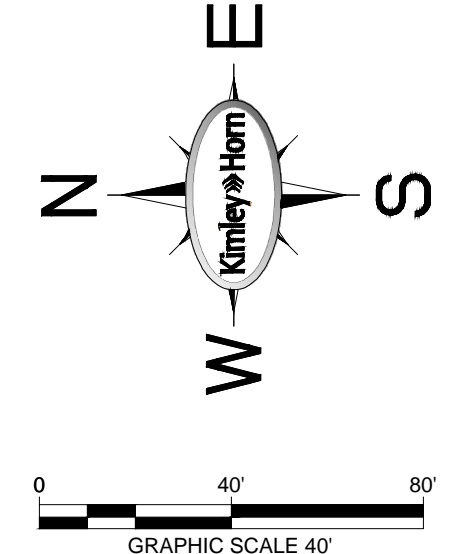
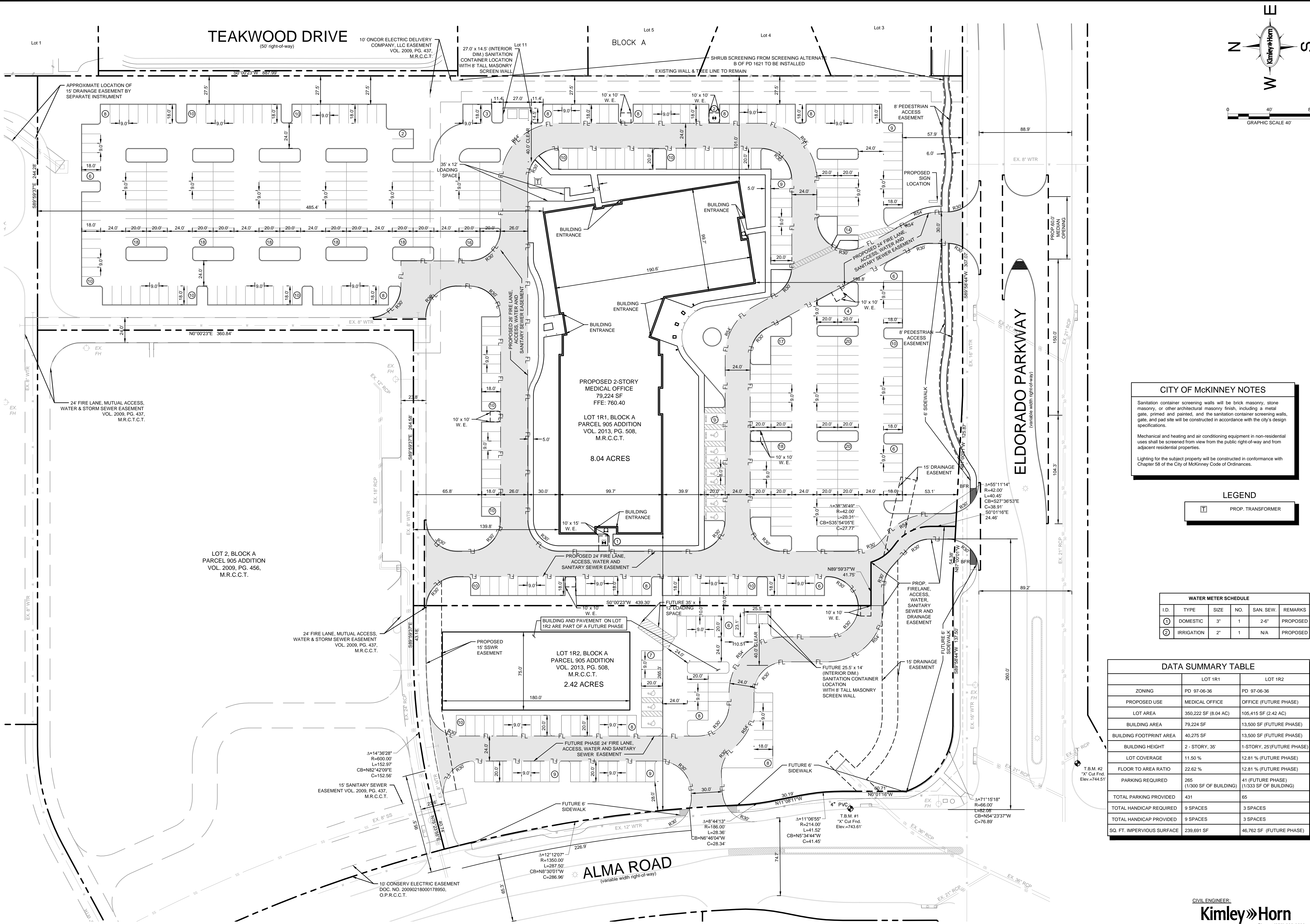


IMAGES: \P\1246-XREF\ALUMA-XREF.dwg -XREF\SHIM-XREF.dwg -XREF\K101-XREF.dwg
MIRIN: \P\1246-XREF\ALUMA-XREF.dwg -XREF\SHIM-XREF.dwg -XREF\K101-XREF.dwg
DWG NAME: K:\P\1246-XREF\ALUMA-XREF.dwg -XREF\SHIM-XREF.dwg -XREF\K101-XREF.dwg
LAST SAVED: 10/20/2014 10:57:39 AM
This document, together with the concepts and designs presented herein, is intended only for the specific purpose and client for which it was prepared. Reuse of and improper reliance on this document without written authorization and approval by Kimley-Horn and Associates, Inc. shall be without liability to Kimley-Horn and Associates, Inc.



CITY OF MCKINNEY NOTES

Sanitation container screening walls will be brick masonry, stone masonry, or other architectural masonry finish, including a metal gate, primed and painted, and the sanitation container screening walls, gate, and pad site will be constructed in accordance with the city's design specifications.

Mechanical and heating and air conditioning equipment in non-residential uses shall be screened from view from the public right-of-way and from adjacent residential properties.

Lighting for the subject property will be constructed in conformance with Chapter 58 of the City of McKinney Code of Ordinances.

LEGEND

PROP. TRANSFORMER

WATER METER SCHEDULE

I.D.	TYPE	SIZE	NO.	SAN. SEW.	REMARKS
1	DOMESTIC	3"	1	2-6"	PROPOSED
2	IRRIGATION	2"	1	N/A	PROPOSED

DATA SUMMARY TABLE

	LOT 1R1	LOT 1R2
ZONING	PD 97-06-36	PD 97-06-36
PROPOSED USE	MEDICAL OFFICE	OFFICE (FUTURE PHASE)
LOT AREA	350,222 SF (8.04 AC)	105,415 SF (2.42 AC)
BUILDING AREA	79,224 SF	13,500 SF (FUTURE PHASE)
BUILDING FOOTPRINT AREA	40,275 SF	13,500 SF (FUTURE PHASE)
BUILDING HEIGHT	2 - STORY, 35'	1-STORY, 25' (FUTURE PHASE)
LOT COVERAGE	11.50 %	12.81 % (FUTURE PHASE)
FLOOR TO AREA RATIO	22.62 %	12.81 % (FUTURE PHASE)
PARKING REQUIRED	265 (1/300 SF OF BUILDING)	41 (1/333 SF OF BUILDING)
TOTAL PARKING PROVIDED	431	65
TOTAL HANDICAP REQUIRED	9 SPACES	3 SPACES
TOTAL HANDICAP PROVIDED	9 SPACES	3 SPACES
SQ. FT. IMPERVIOUS SURFACE	239,691 SF	46,762 SF (FUTURE PHASE)

CIVIL ENGINEER:
Kimley-Horn
5750 Genesis Ct., Suite 200
Frisco, TX 75034
Contact: Trey Braswell, P.E.

Phone: (972) 335-3580
Fax: (972) 335-3779

Kimley-Horn
5750 GENESIS COURT, SUITE 200, FRISCO, TX 75034
PHONE: 972-335-3580 FAX: 972-335-3779
WWW.KIMLEY-HORN.COM
TEXAS REGISTERED ENGINEERING FIRM F-928

PRELIMINARY
FOR REVIEW ONLY
Not for construction or permit purposes.
Kimley-Horn
Engineer: ROY BRASWELL, P.E.
P.E. No. 104908 Date: 10/9/2014

KHA PROJECT: 63486525
DATE: 10/8/2014
SCALE: AS SHOWN
DESIGNED BY: SBW
DRAWN BY: MCD
CHECKED BY: TBB

McKINNEY MEDICAL VILLAGE
COLLIN COUNTY, TEXAS

SITE PLAN

SHEET NUMBER
1 OF 1

NO. _____ DATE _____
REVISIONS _____

RECEIVED
By Planning Department at 7:58 am, Oct 09, 2014