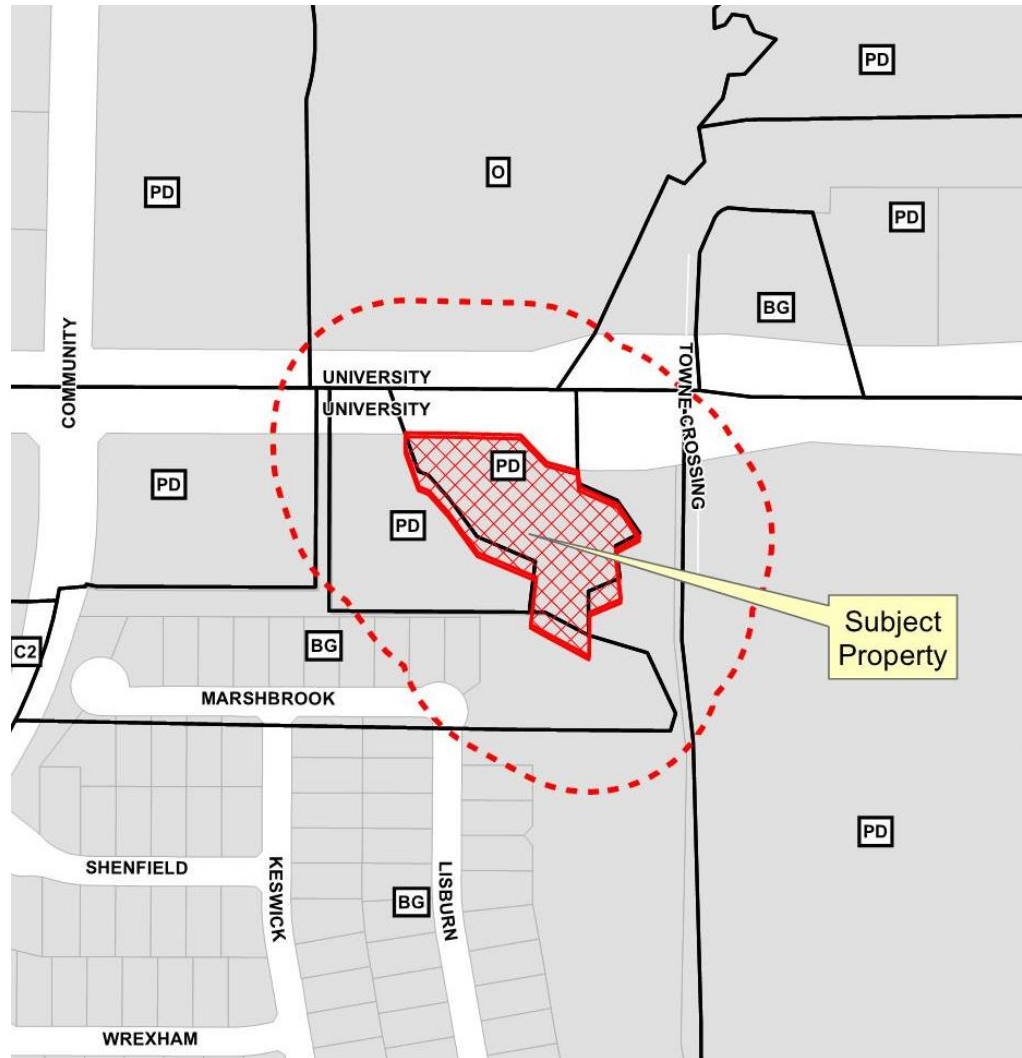


Automotive Care Center  
Specific Use Permit  
16-192SUP



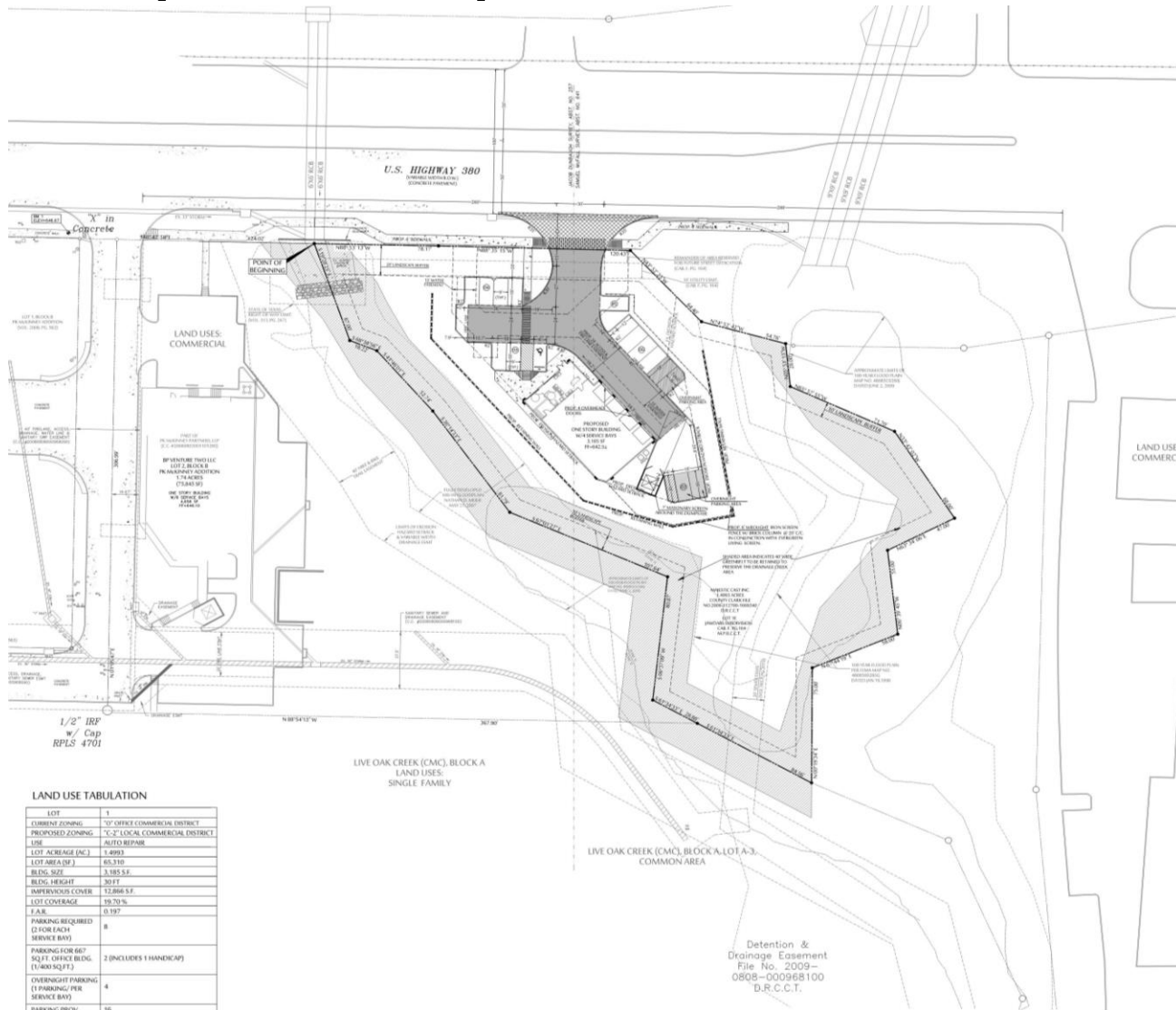
# Location Map



# Aerial Exhibit



# Proposed Specific Use Permit



## LAND USE TABULATION

LOT	1
CURRENT ZONING	30' OFFIC COMMERCIAL DISTRICT
PROPOSED ZONING	C-2 LOCAL COMMERCIAL DISTRICT
USE	AUTO REPAIR
LOT AREA (AC)	1.4993
LOT AREA (SQ FT)	65,310
BLDG. SIZE	3,185 SF
BLDG. HEIGHT	30 FT
IMPERVIOUS COVER	12,868 SF
LOT COVERAGE	19.70%
F.A.R.	0.197
PARKING REQUIRED (2 FOR EACH SERVICE BAY)	8
PARKING FOR 400 SQ.FT. OFFICE BLDG. (1/400 SQ.FT.)	2 (INCLUDES 1 HANDICAP)
OVERNIGHT PARKING (1 PARKING PER SERVICE BAY)	4
PARKING PROV.	16

Detention &  
Drainage Easement  
File No. 2009-  
0608-00096B100  
D.R.C.C.T.



