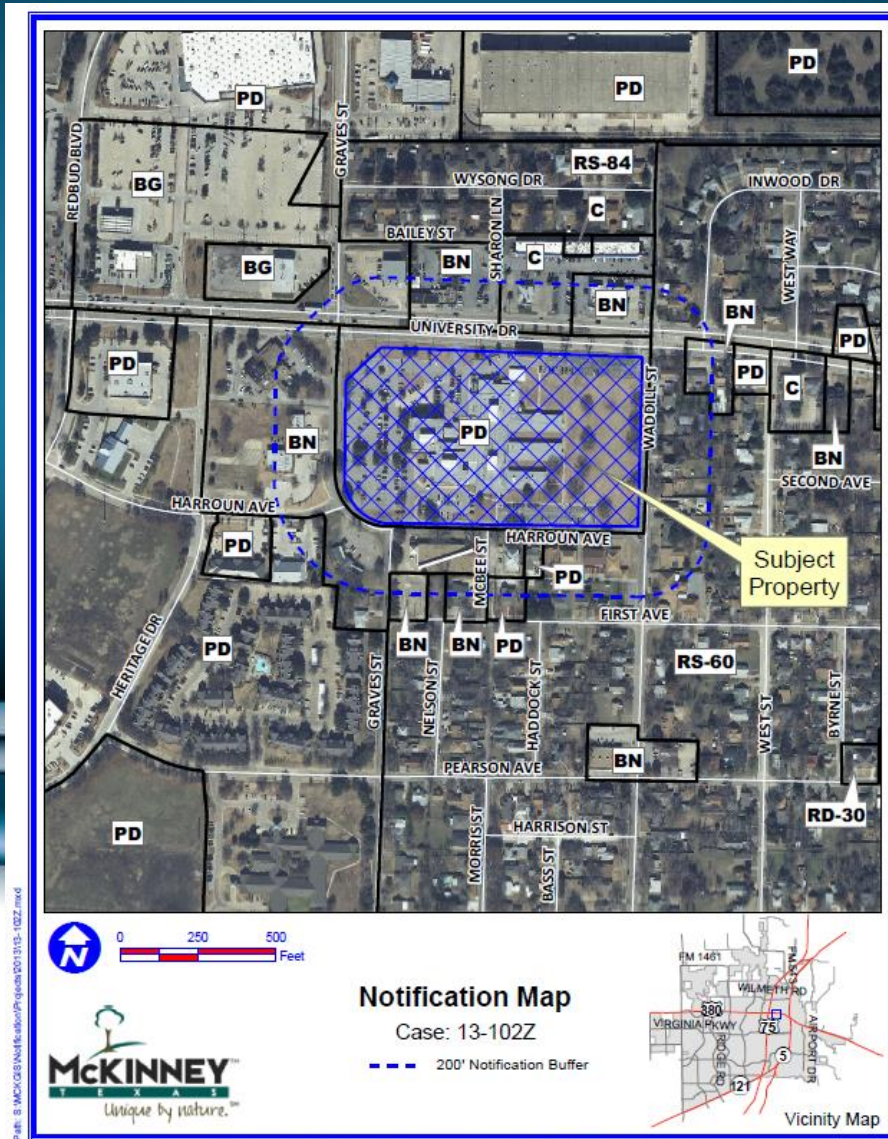


Case No. 13-102Z

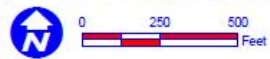
Located on the Southwest Corner of Waddill Street
and U.S. Highway 380 (University Drive)



Aerial Map



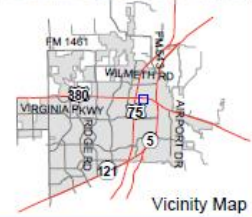
Path: B:\MCK\GIS\Work\Res\GIS\Map\13-102Z.mxd



Notification Map

Case: 13-102Z

--- 200' Notification Buffer



DISCLAIMER: This map and information contained in it were developed exclusively for use by the City of McKinney. Any use or reliance on this map by anyone else is at that party's risk and without liability to the City of McKinney, its officials or employees for any discrepancies, errors, or variances which may exist.

Zoning Exhibit C - Elevations



Mfg. & Install D/F Monument Display @ University Dr.
scale: 1/2" = 1'-0"

CENTER NAME - 10" x 96" = 6.7sf
WinCo FOODS - 48" x 96" = 32sf
38.7sf

RECEIVED
By Kathy Wright at 10:59 am, Jun 11, 2013

Exhibit C

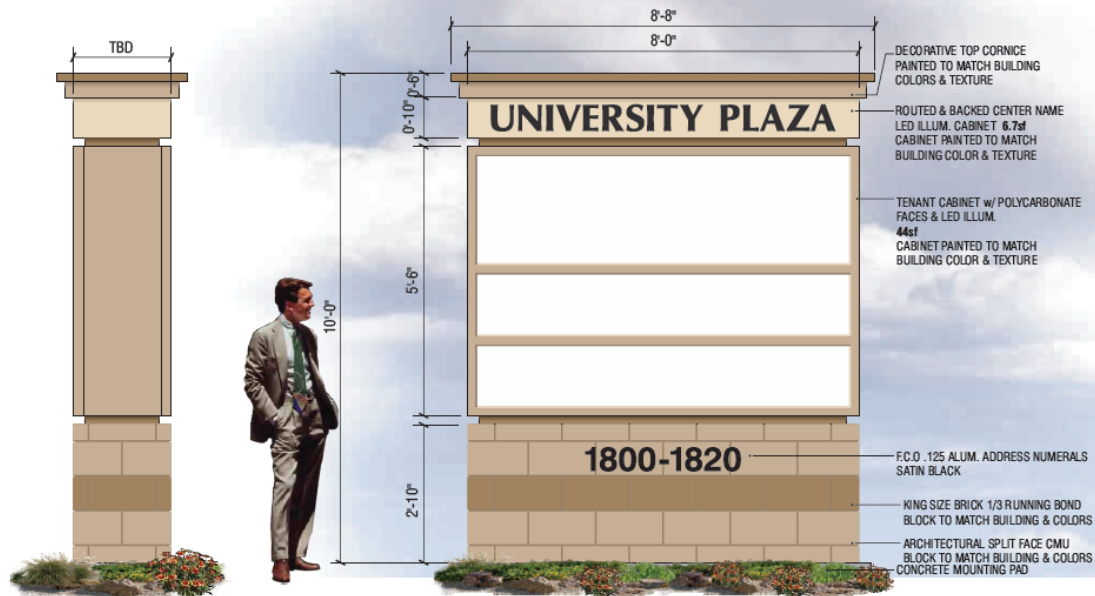
It is the intent and purpose of this color rendering to provide a basic color representation of your sign finish and color. However, digital media and printed colors will vary from actual paint finish and color. Existing painted surfaces will have a perceptible difference in shade and sheen from your sign finish. Providing a sample of the paint you wish to match or a Matthews paint color formula will minimize the differences.

16265 Star Road Nampa, ID 83687 toll free: 800.592.8058 tele: 208.345.4020 fax: 208.336.9886 www.imagenational.com

| | | | | | | | | |
|--|--|-----------------------|--|----------------------------|-----------------------------------|--|--------------------------------------|------------------|
| | | store # 122 | LOCATION: 1800 N. Graves St. McKinney, TX. 75069 | DATE: 03.07.2013 | DRAWN BY: S. Carico | | NAMPALANT - UL #433195-001 | page # 2 of 7 |
| | | | | S.I.: 00000 | COMPUTER FILE: WF-122-C | | | |

© 2013 image national signs. This design is an original work of authorship by Image National, Inc. (Image) which owns the copyright protection by the copyright law of the United States (Title 17, U.S. Code). All rights are reserved by Image and, until the use of this design is authorized by Image in writing, Image owns the exclusive rights to: a) reproduce this design in copies, in graphic form or as a sign; b) prepare derivative works based upon the design; c) distribute copies of the design by sale or other transfer of ownership; and d) display the design publicly.

Zoning Exhibit C - Elevations



Mfg. & Install D/F Monument Display @ Waddill St.
 scale: 1/2" = 1'-0"

CENTER NAME - 10" x 96" = 6.7sf
 TENANT - 66" x 96" = 44sf
50.7sf

Exhibit C

RECEIVED
 By Kathy Wright at 10:59 am, Jun 11, 2013

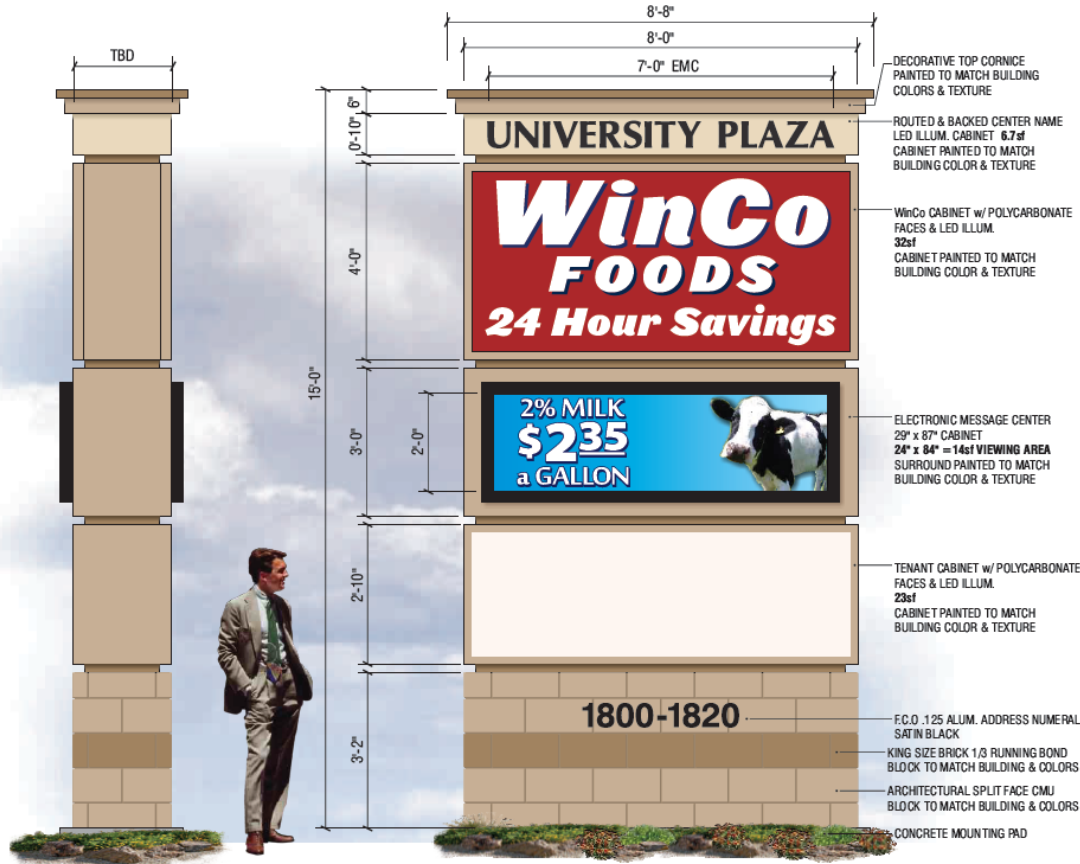
It is the intent and purpose of this color rendering to provide a basic color representation of your sign finish and color. However, digital media and printed colors will vary from a dual paint finish and color. Existing painted surfaces will have a perceptible difference in shade and sheen from your sign finish. Providing a sample of the paint you wish to match or a Matthews paint color formula will minimize the differences.

16265 Star Road Nampa, ID 83687 toll free: 800.592.8058 tele: 208.345.4020 fax: 208.336.9886 www.imagenational.com

| | | | | | |
|-------------|-------------|--|-----------------|----------------|--|
| | PROJECT NO: | LOCATION: | DATE: | DRAWN BY: | |
| | | 1800 N. Graves St. McKinney, TX. 75069 | 03.07.2013 | S. Carico | |
| store # 122 | | | S.N.: | COMPUTER FILE: | |
| | | | 00000 | WF-122-C | |
| | | | ARCHITECT EXEC: | REVISION: | U.S.A. - All signs conform to 18-40-01 (Revised accordingly) to meet comply with local and state government. Check all signs meet the requirements of Article 106 of the National Electrical Code and/or applicable local codes. This includes proper grounding and bonding of the sign. |
| | | | D. Cobb | R5 05.06.2013 | MAMPA PLANT - UT #433195-001 |

© 2013 Image National Signs. This design is an original work of authorship by Image National, Inc. (Image) which owns the copyright protection by the copyright law of the United States (Title 17, U.S. Code). All rights are reserved by Image and, until the use of this design is authorized by Image in writing, Image owns the exclusive rights to: a) reproduce this design in copies, in graphic form or as a sign, b) prepare derivative works based upon the design, c) distribute copies of the design by sale or other transfer of ownership, and d) display the design publicly.

Zoning Exhibit C - Elevations



RECEIVED
By Kathy Wright at 10:59 am, Jun 11, 2013

sign "C" Mfg. & Install D/F Monument - Display @ Graves St.
scale: 1/2" = 1'-0"

CENTER NAME - 10" x 96" = 6.7sf
WinCo FOODS - 48" x 96" = 32sf
EMC VIEWING AREA - 24" x 84" = 14sf
TENANT - 34" x 96" = 23sf
75.7sf

Exhibit C

It is the intent and purpose of this color rendering to provide a basic color representation of your sign finish and color. However, digital media and printed colors will vary from a dual paint finish and color. Existing painted surfaces will have a perceptible difference in shade and sheen from your sign finish. Providing a sample of the paint you wish to match or a Matthews paint color formula will minimize the differences.

16265 Star Road Nampa, ID 83687 toll free: 800.592.8058 tele: 208.345.4020 fax: 208.336.9886 www.imagenational.com

| | | | | | | | | | | |
|--|--|-----------------------------------|---|----------------------------|-------------------------------|--|-----------------------------------|--|--|-------------------------|
| | PROJECT FILE: WinCo FOODS | store # 122 | LOCATION: 1800 N. Graves St. McKinney, TX. 75069 | DATE: 03.07.2013 | OWNER BY: S. Carico | | COMPUTER FILE: WF-122-C | | NAMPA PLANT - UL #433195-001 | page # 4 of 7 |
| | ACCOUNT EXEC: D. Cobb | REVISION: R5 05.06.2013 | © 2013 image national signs. This design is an original work of authorship by Image National, Inc. (image) which owns the copyright protection by the copyright law of the United States (Title 17, U.S. Code). All rights are reserved by image and, until the use of this design is authorized by image in writing, image owns the exclusive rights to: a) reproduce this design in copies, in graphic form or as a sign; b) prepare derivative works based upon the design; c) distribute copies of the design by sale or other transfer of ownership; and d) display the design publicly. | | | | | | | |

