

# Parks & Recreation

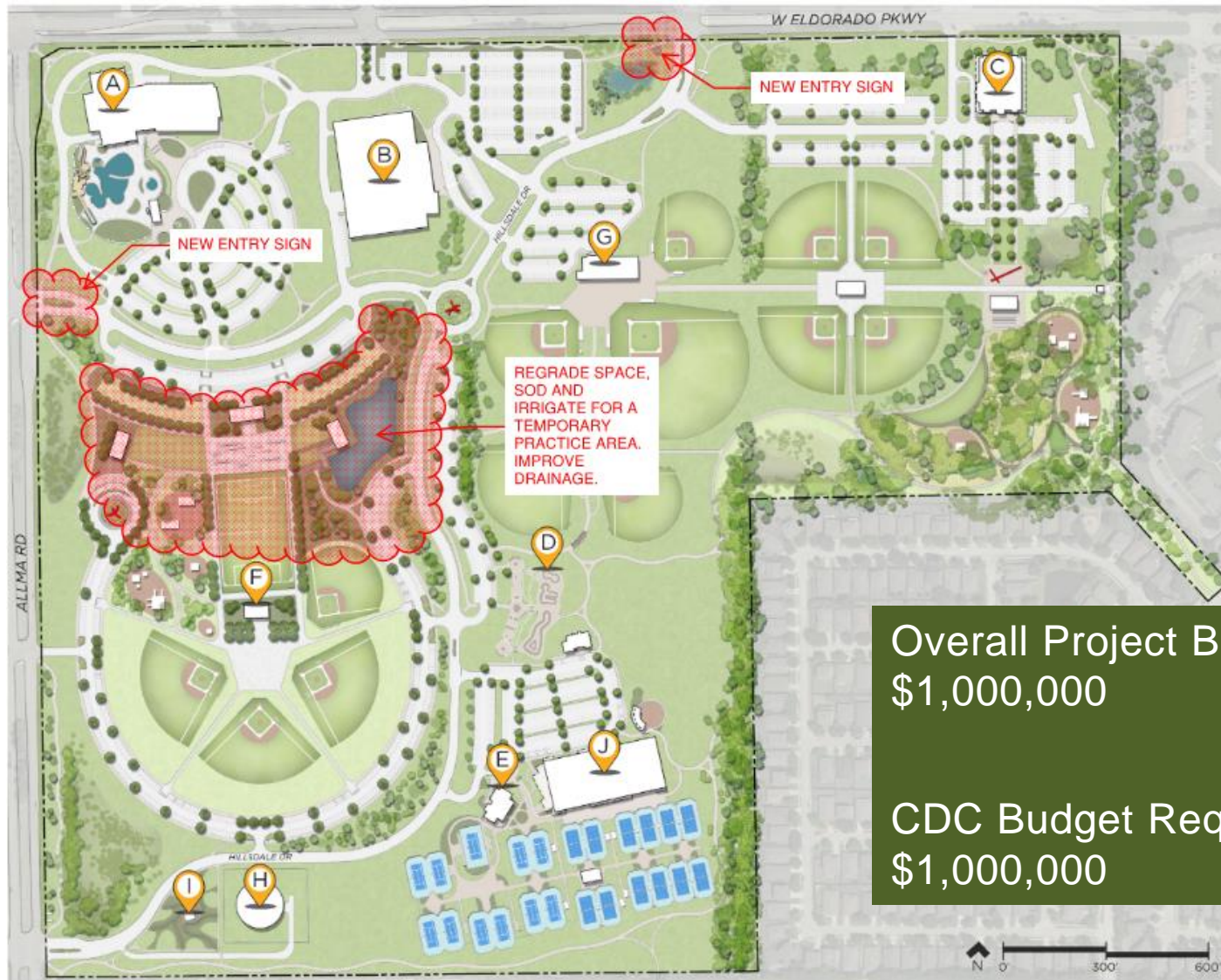
## *2024/2025 \$1M Grant Request*

McKinney Community Development Corporation

July 25, 2024

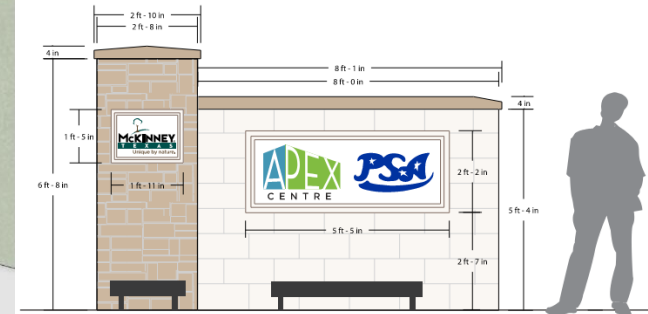
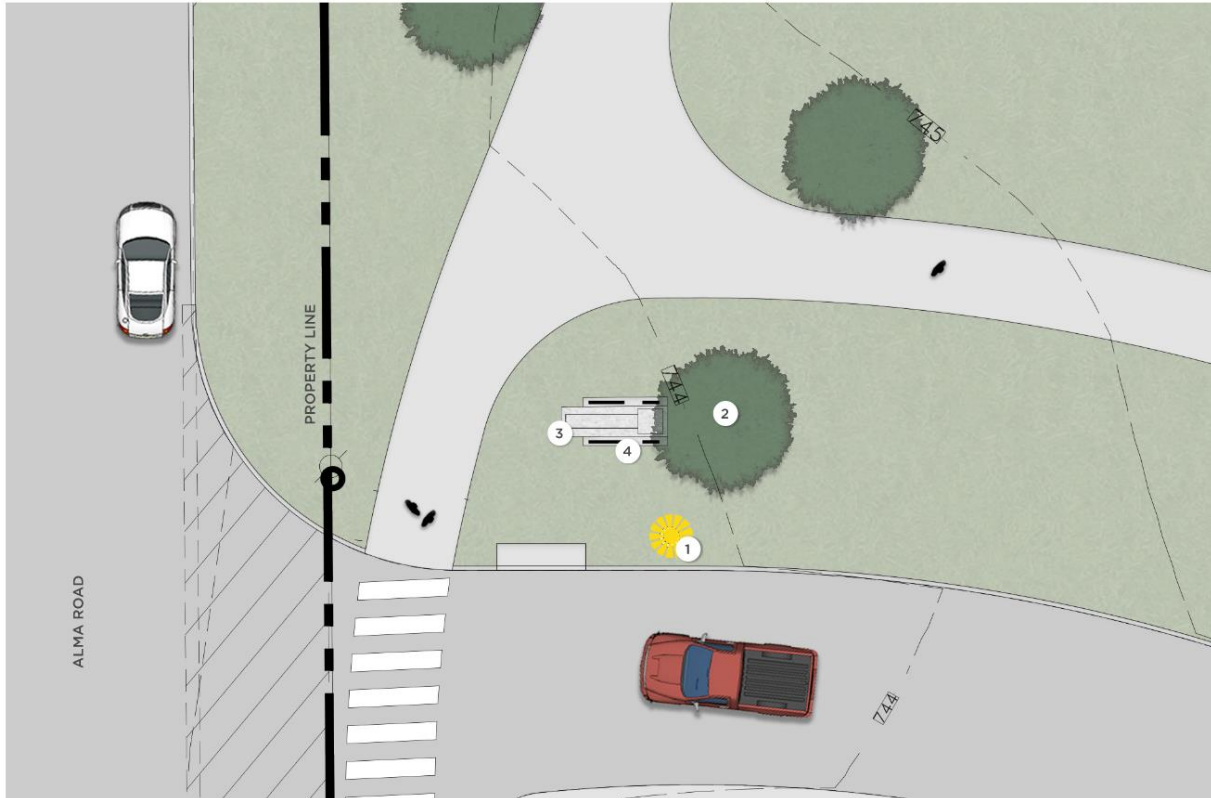
Amy Kinkade, Director of Parks & Recreation

# FY 24/25 MCDC GRANT REQUEST

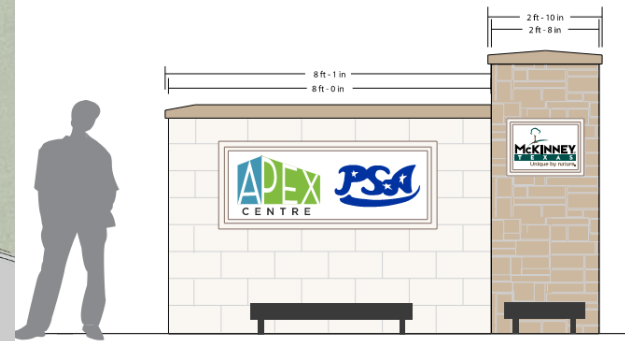


## GABE NESBITT PARK IMPROVEMENTS

# ALMA ROAD ENTRY MONUMENT SIGN



FRONT VIEW



BACK VIEW



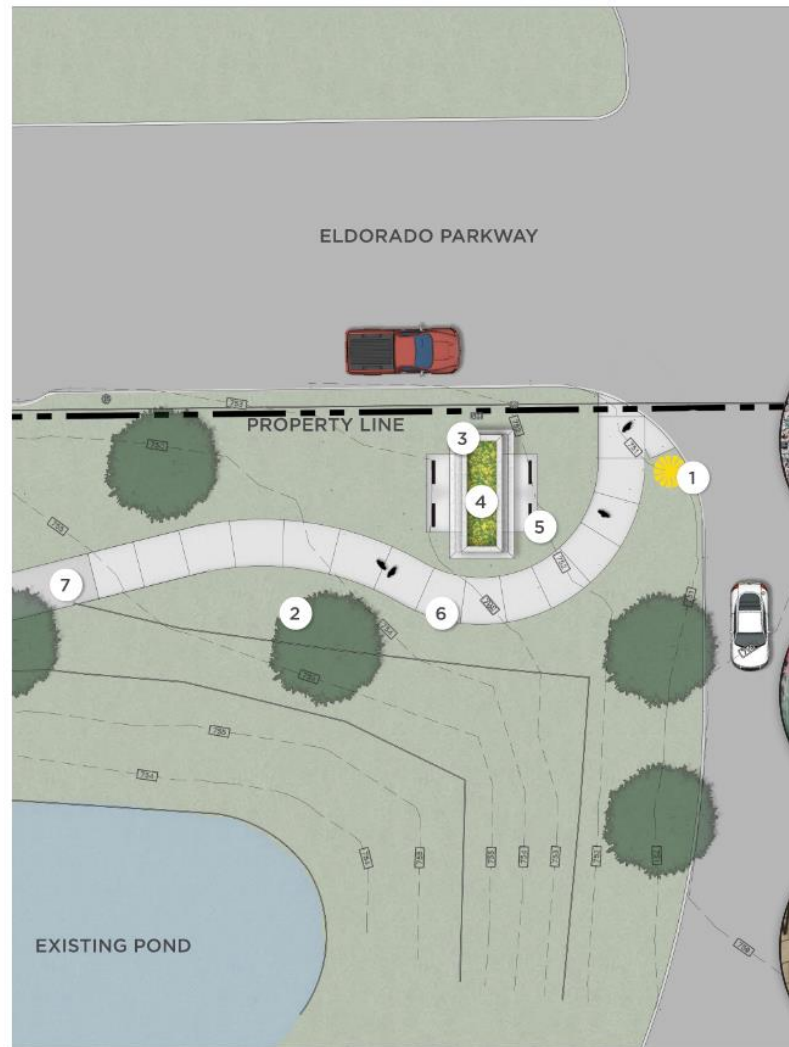
# ELDORADO PARKWAY ENTRY SIGN



Bird's Eye View Facing Southwest



Section Elevation Facing West



- LEGEND**
- 1 Existing Light
  - 2 Existing Tree (typ.)
  - 3 New Entry Monument
  - 4 Monument Planting
  - 5 Monument Lighting
  - 6 New Sidewalk Route
  - 7 Existing Sidewalk



Texas Sage



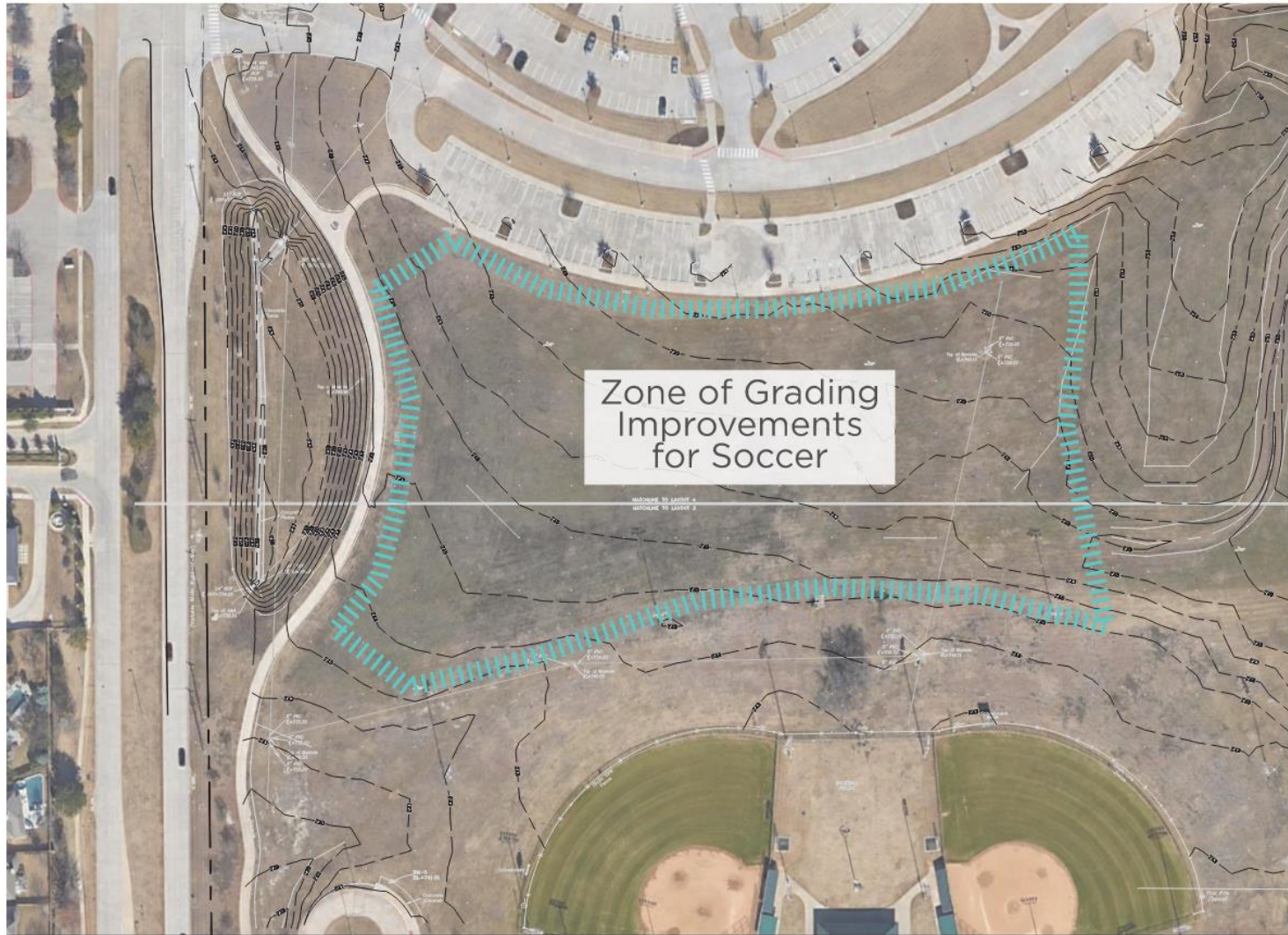
Red Yucca



Lighting

# GABE NESBITT IMPROVEMENTS

# OPEN SPACE FOR PRACTICE FIELD



# GABE NESBITT IMPROVEMENTS

## New Entry Sign at Alma Road

- Monument Sign
- Lights

## New Entry Sign at Eldorado Parkway

- Reroute sidewalk
- Monument Sign
- Lights
- Landscape
- Irrigation

## Open Field Improvements

- Regrade and improve drainage
- Solid sod play areas and hydromulch drainage areas
- Irrigation

# FY 24/25 MCDC GRANT REQUEST

PK1806	GABE NESBITT PARK IMPROVEMENTS	\$1,000,000
--------	-----------------------------------	-------------