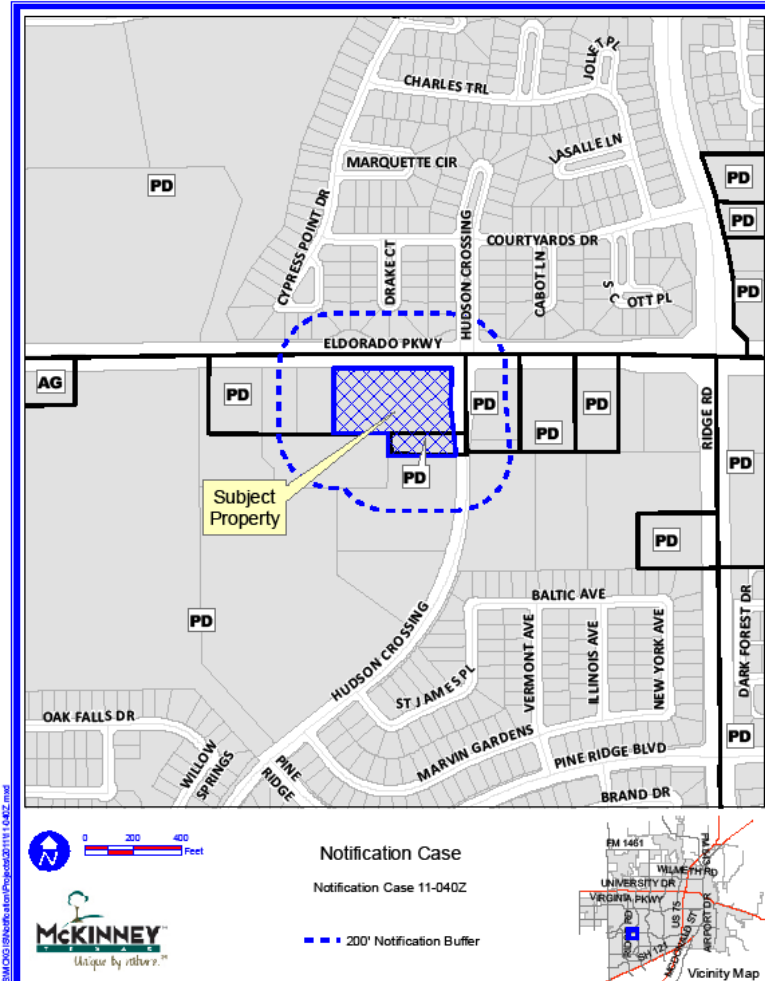


Case No. 11-040Z

Conduct a Public Hearing to Consider/Discuss/Act on the Request by Pogue Engineering & Development Company, Inc., on Behalf of Carrington Partners, for Approval of a Request to Rezone Approximately 3.60 Acres from “PD” – Planned Development District to “PD” – Planned Development District, Generally to Allow Neighborhood Business uses, Located on the Southwest Corner of Eldorado Parkway and Hudson Crossing.

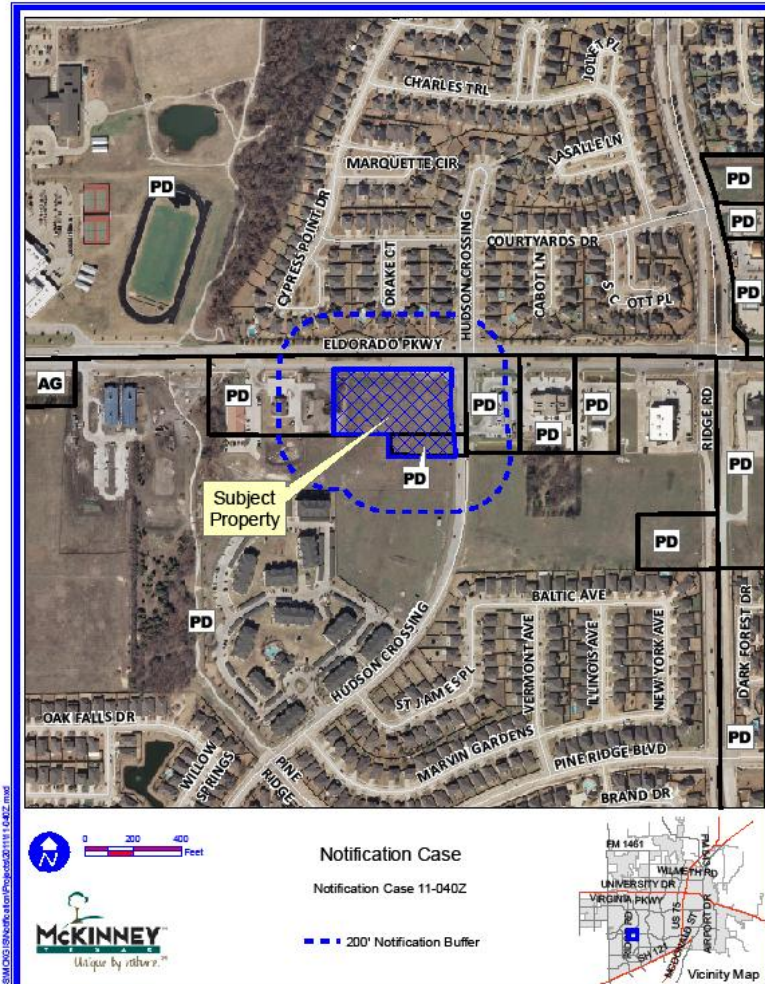
Location Map



DISCLAIMER: This map and information contained in it were developed exclusively for use by the City of McKinney. Any use or reliance on this map by anyone else is at that party's risk and without liability to the City of McKinney, its officials or employees for any discrepancies, errors, or variances which may exist.



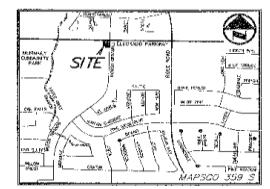
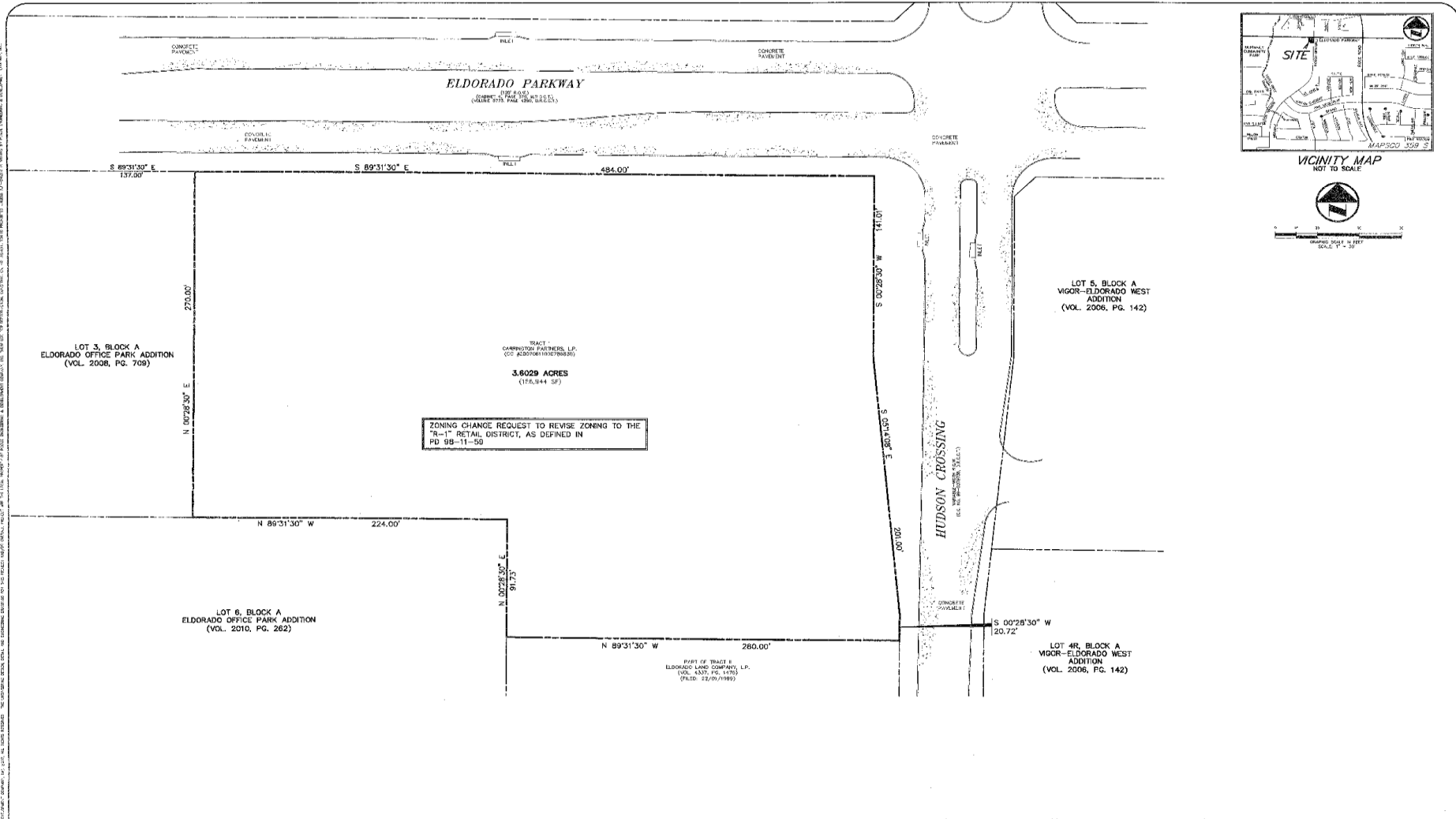
Aerial Exhibit



@MCKINNEY\GIS\Info\Aerial\20111114\AEP.mxd

DISCLAIMER: This map and information contained in it were developed exclusively for use by the City of McKinney. Any use or reliance on this map by anyone else is at that party's risk and without liability to the City of McKinney, its officials or employees for any discrepancies, errors, or variances which may exist.

Proposed Zoning Exhibit



3.6029 ACRE TRACT

ADDITIONAL INFORMATION: 10/15/2011 - 11/15/2011. FOR INFORMATION ONLY. THIS DOCUMENT IS NOT TO BE USED FOR CONSTRUCTION OR RECORDING PURPOSES.

OWNER CARRINGTON PARTNERS P.O. BOX 799508 DALLAS, TEXAS 75379 ALICE WONG (214) 731-9208 PHONE (214) 740-9198 FAX		PROJECT INFORMATION 3.6029 ACRES ELDORADO OFFICE PARK CITY OF MCKINNEY, COLLIN COUNTY, TEXAS GEORGE HERNDON SURVEY, ABSTRACT NO. 390 PROPOSED USE: RETAIL EXISTING ZONING: PLANNED DEVELOPMENT		THIS DOCUMENT IS PROVIDED FOR THE PURPOSE OF PUBLIC REVIEW UNDER THE AUTHORITY OF SECTION 52.004 OF THE TEXAS GOVERNMENT CODE. IT IS NOT TO BE USED FOR CONSTRUCTION OR RECORDING PURPOSES.		POGUE ENGINEERING & DEVELOPMENT COMPANY, INC. 1612 BECKY CENTRAL DRIVE SUITE 100 MCKINNEY, TEXAS 75066 (214) 544-6800 PHONE (214) 544-3000 FAX www.PogueEngineering.com		ZONING EXHIBIT 3.6029 ACRE TRACT ELDORADO OFFICE PARK GEORGE HERNDON SURVEY, ABSTRACT NO. 390 CITY OF MCKINNEY, TEXAS		SHEET NO. Z1.01
NO.	DATE	REVISION / DESCRIPTION		NO.		NO.		NO.		
DESIGN	DRAWN	DATE	SCALE	NOTES						
AWG	AWG	04-10-11	AS SHOWN							

Staff Recommendation

- Staff recommends approval of the proposed rezoning request as outlined in the Staff Report