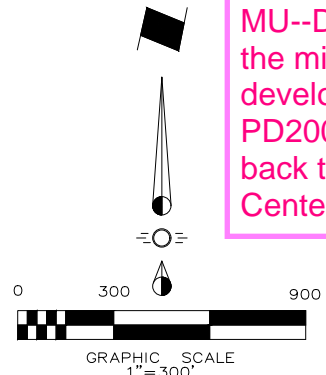


Existing: PD2005-02-016

MU--Develop according to the mixed use development standards of PD2001-02-017, so refers back to "C" Planned Center District



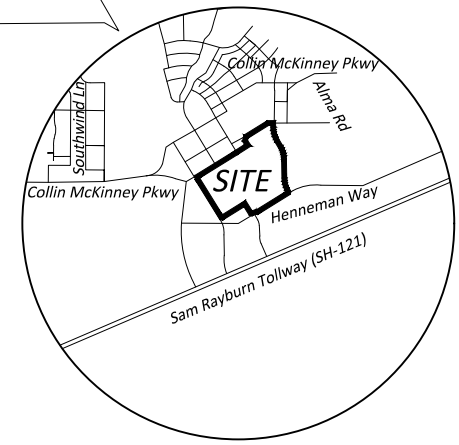
Existing: PD2001-02-017
MU-2--Develop according to "C" Planned Center District

Existing: 2001-02-017
EC-1--Develop according to "O" Office District, Retail, and Private Golf Course

Existing: PD2001-02-017
MU-2--Develop according to "C" Planned Center District

Existing: PD2008-06-054
HDR--High Density Residential Regulations of PD2001-02-017

Existing: PD2005-02-016
EC--Develop according to EC Standards of 2001-02-017, so refers back to EC-1: "O" Office District, Retail, and Private Golf Course

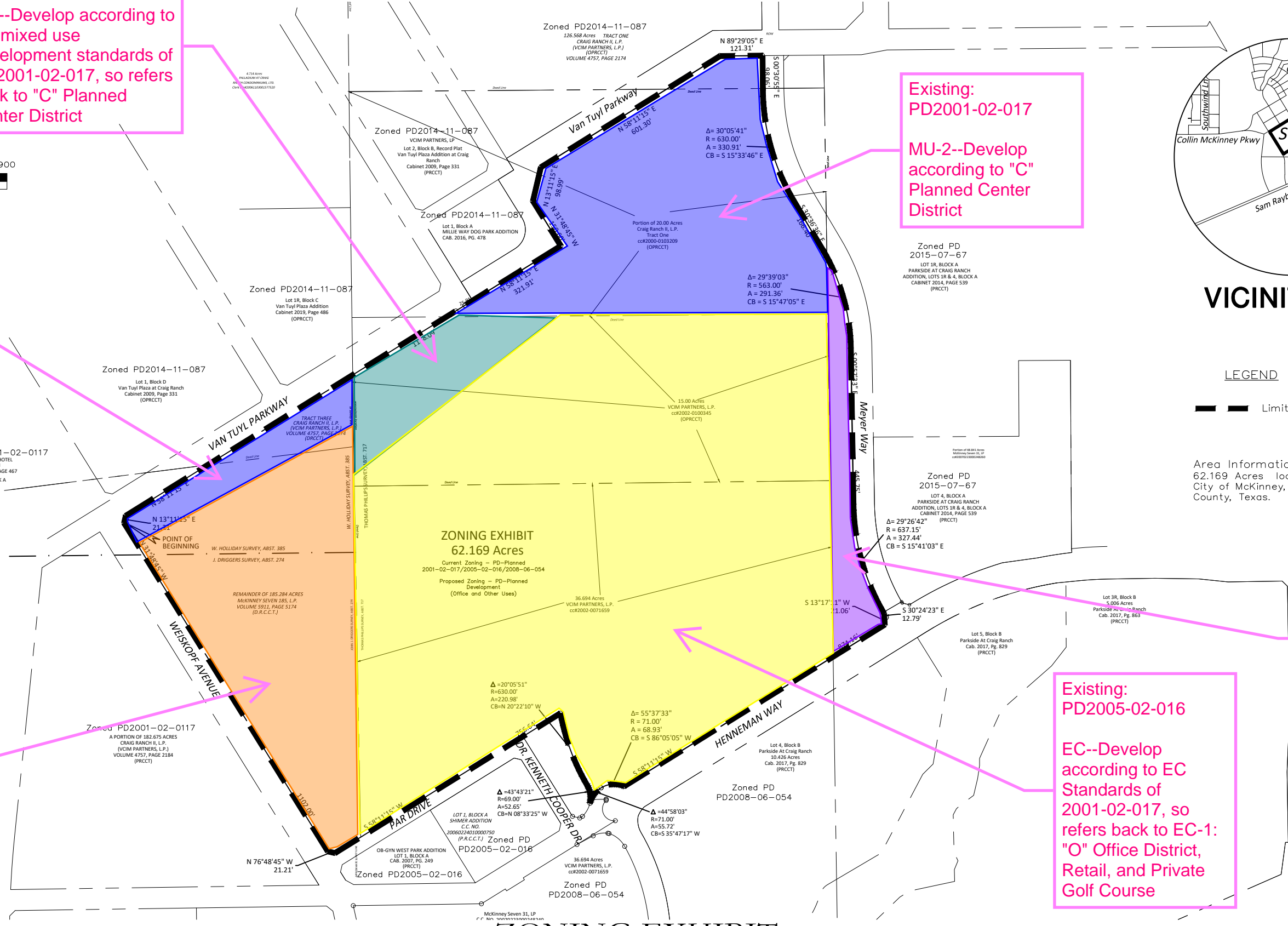


VICINITY MAP NTS

LEGEND

— Limits of Zoning

Area Information:
62.169 Acres located in the City of McKinney, Collin County, Texas.

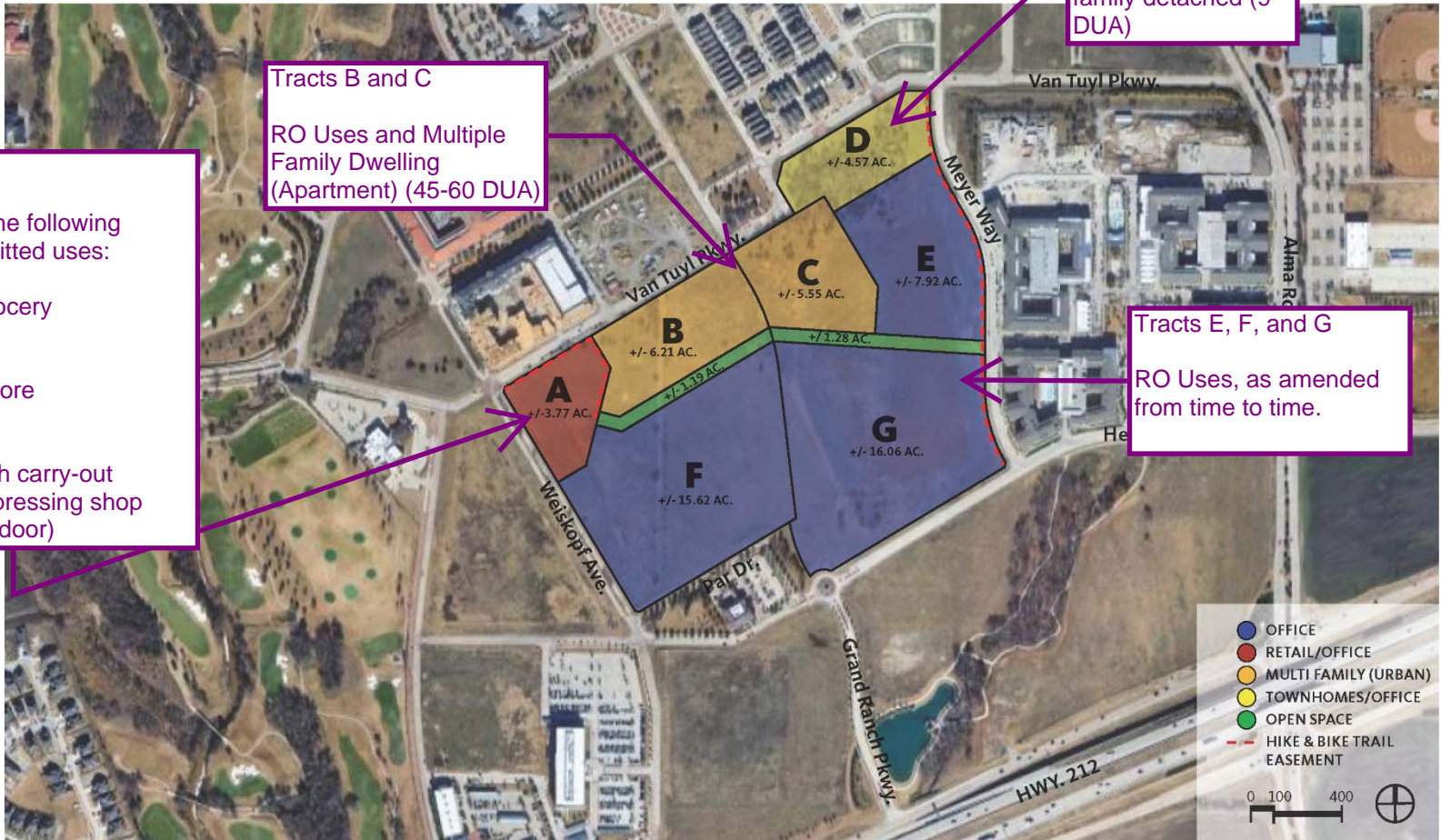


ZONING EXHIBIT
62.169 Acres
Current Zoning — PD-Planned 2001-02-017/2005-02-016/2008-06-054
Proposed Zoning — PD-Planned Development (Office and Other Uses)

ZONING EXHIBIT

8/20/2020

REGULATING PLAN



Tract A
 RO Uses and the following additional permitted uses:
 -Food store, grocery
 -Drug store
 --Florist
 Office supply store
 -Pet store
 -Fitness club
 -Restaurant with carry-out
 -Cleaning and pressing shop
 -Retail store (indoor)

Tracts B and C
 RO Uses and Multiple Family Dwelling (Apartment) (45-60 DUA)

Tract D
 RO Uses and Single family detached (9 DUA)

Tracts E, F, and G
 RO Uses, as amended from time to time.

Craig Ranch