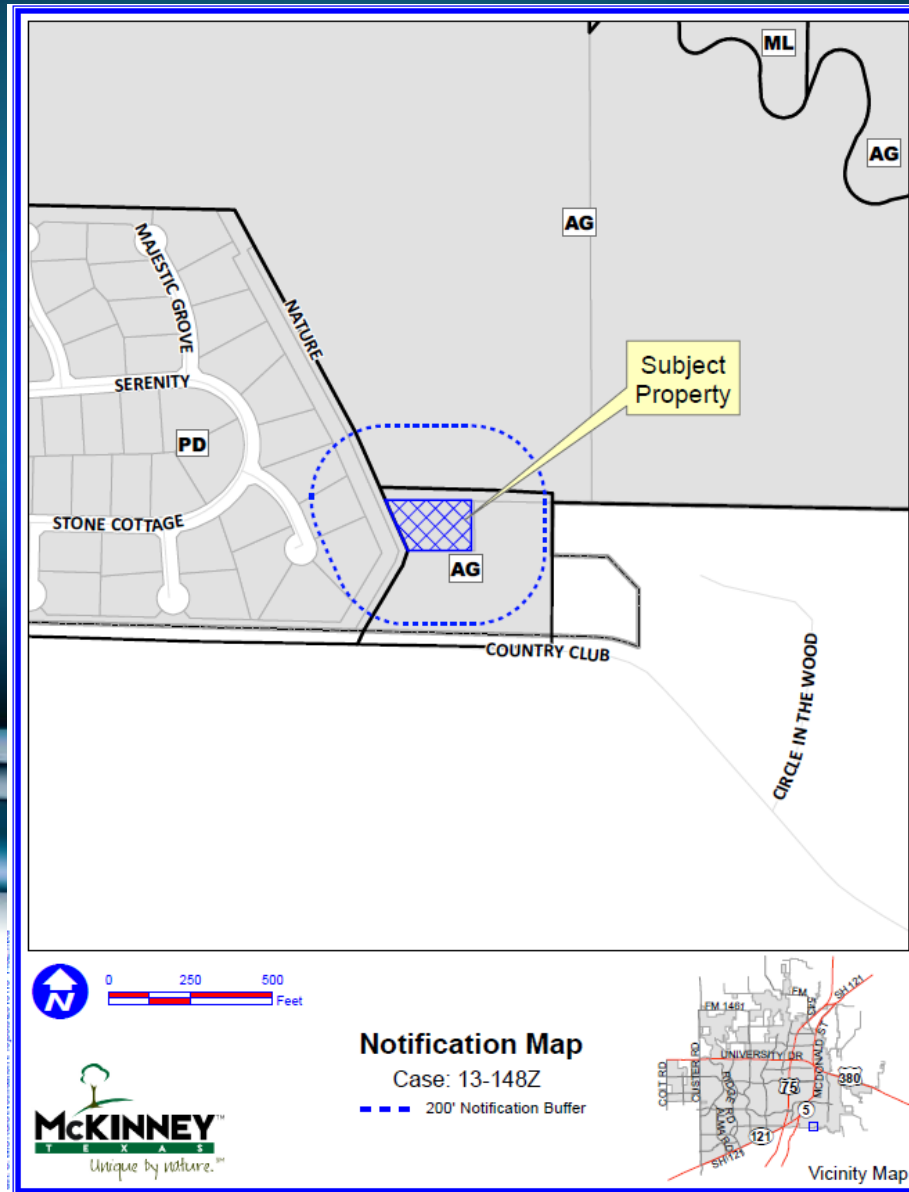


Case No. 13-148Z

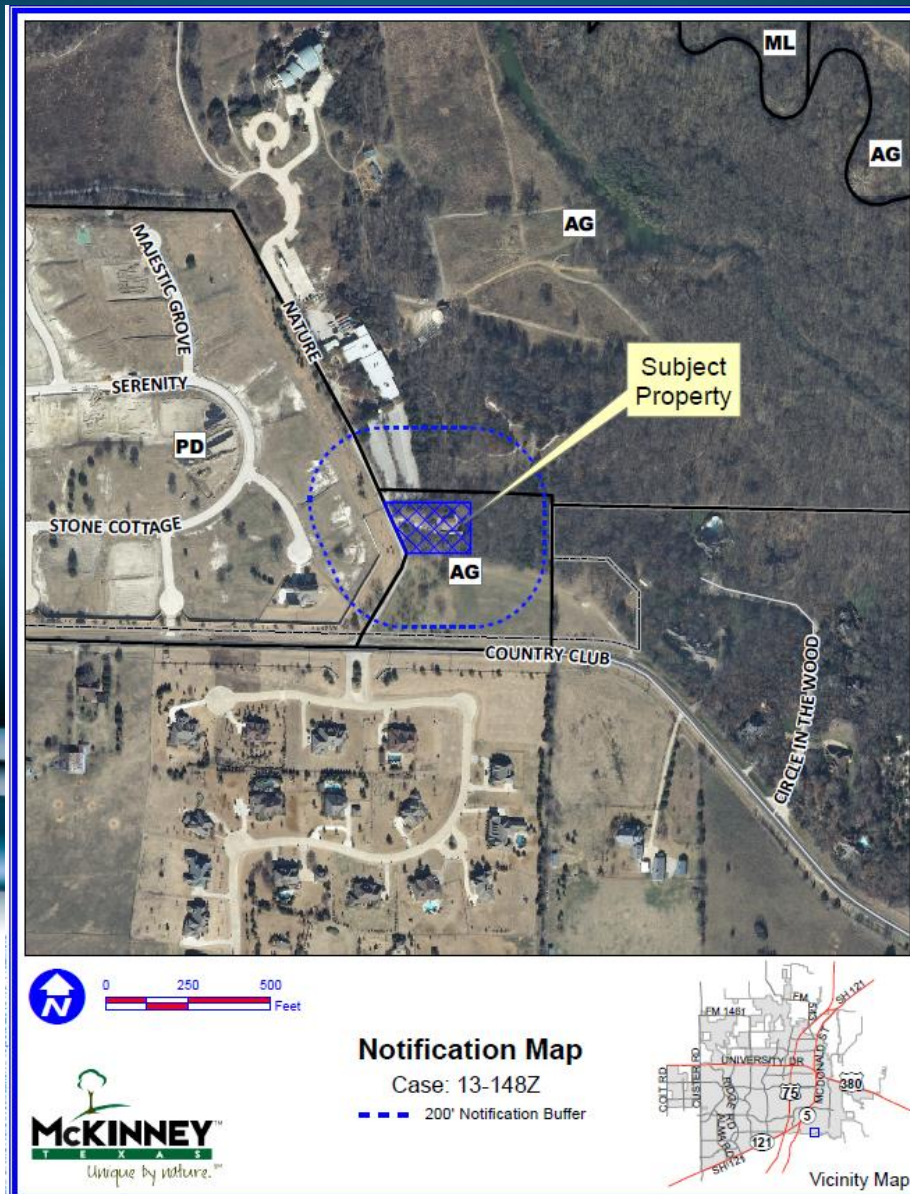
Honey Creek Addition



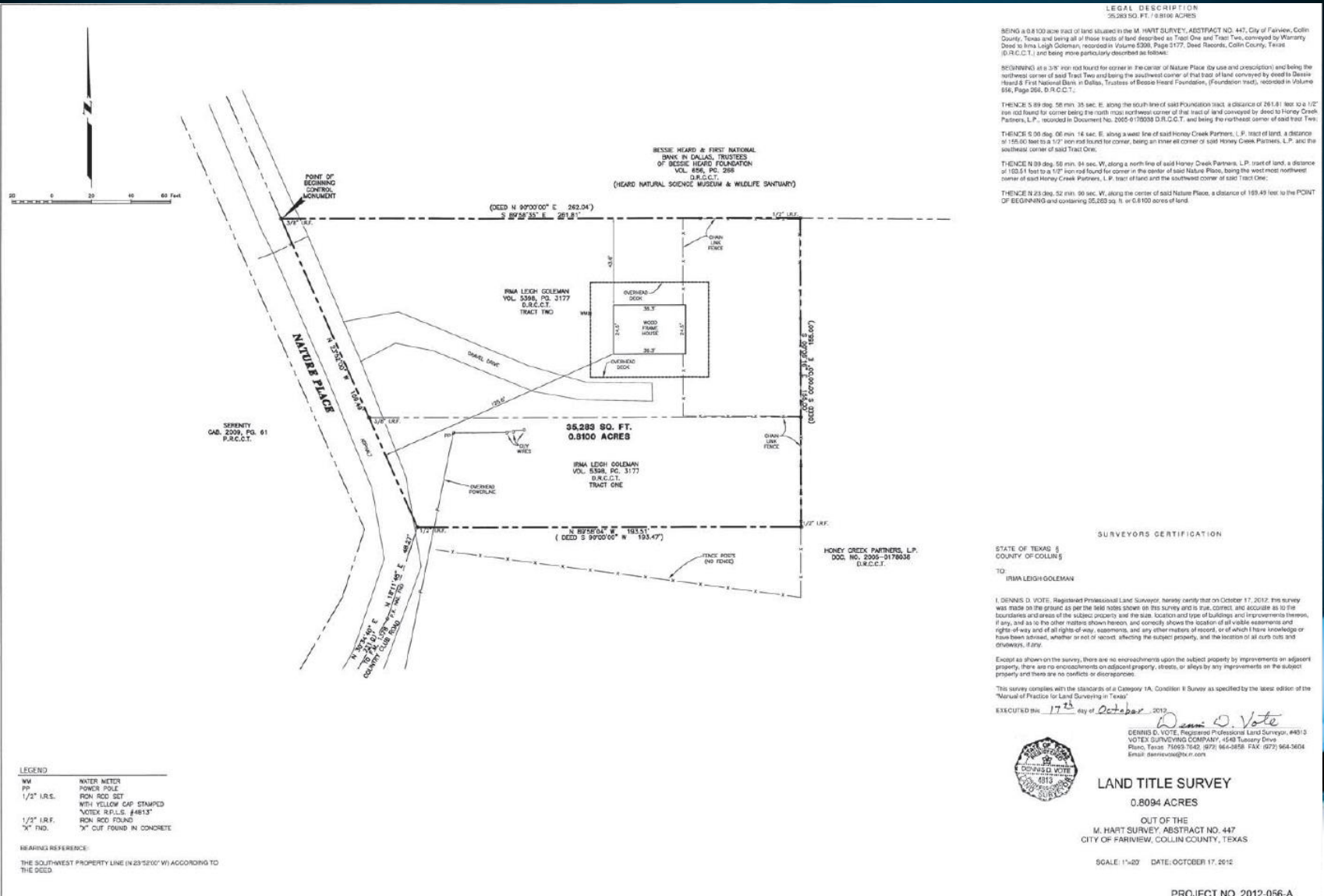
Location Map



Aerial Exhibit



Boundary Exhibit



LEGEND

WM	WATER METER
PP	POWER POLE
1/2" I.R.S.	IRON ROD SET WITH YELLOW CAP STAMPED "VOTE R.P.L.S. #4813"
1/2" I.R.F.	IRON ROD FOUND
"X" IND.	"X" CUT FOUND IN CONCRETE

BEARING REFERENCE:
THE SOUTH-WEST PROPERTY LINE (N 23° 52' 00" W) ACCORDING TO THE DEED.

