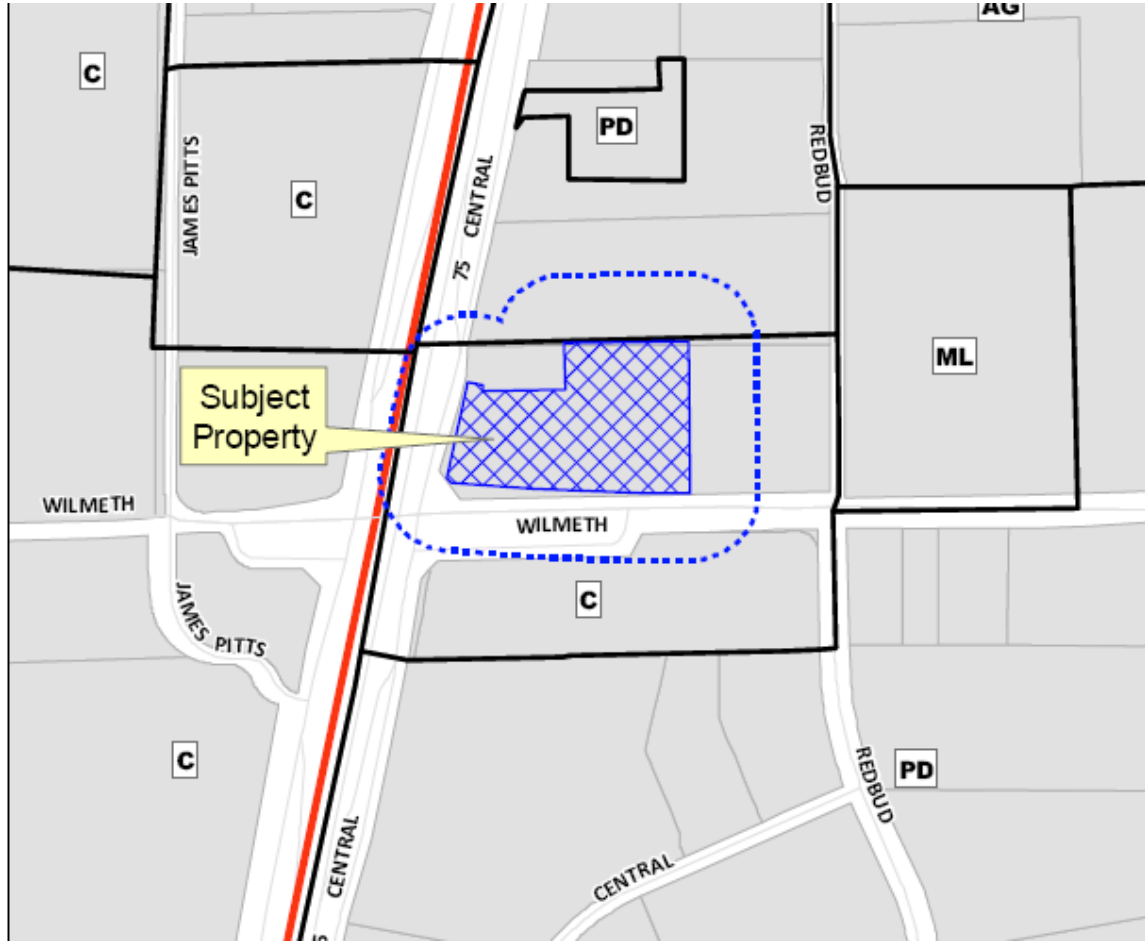


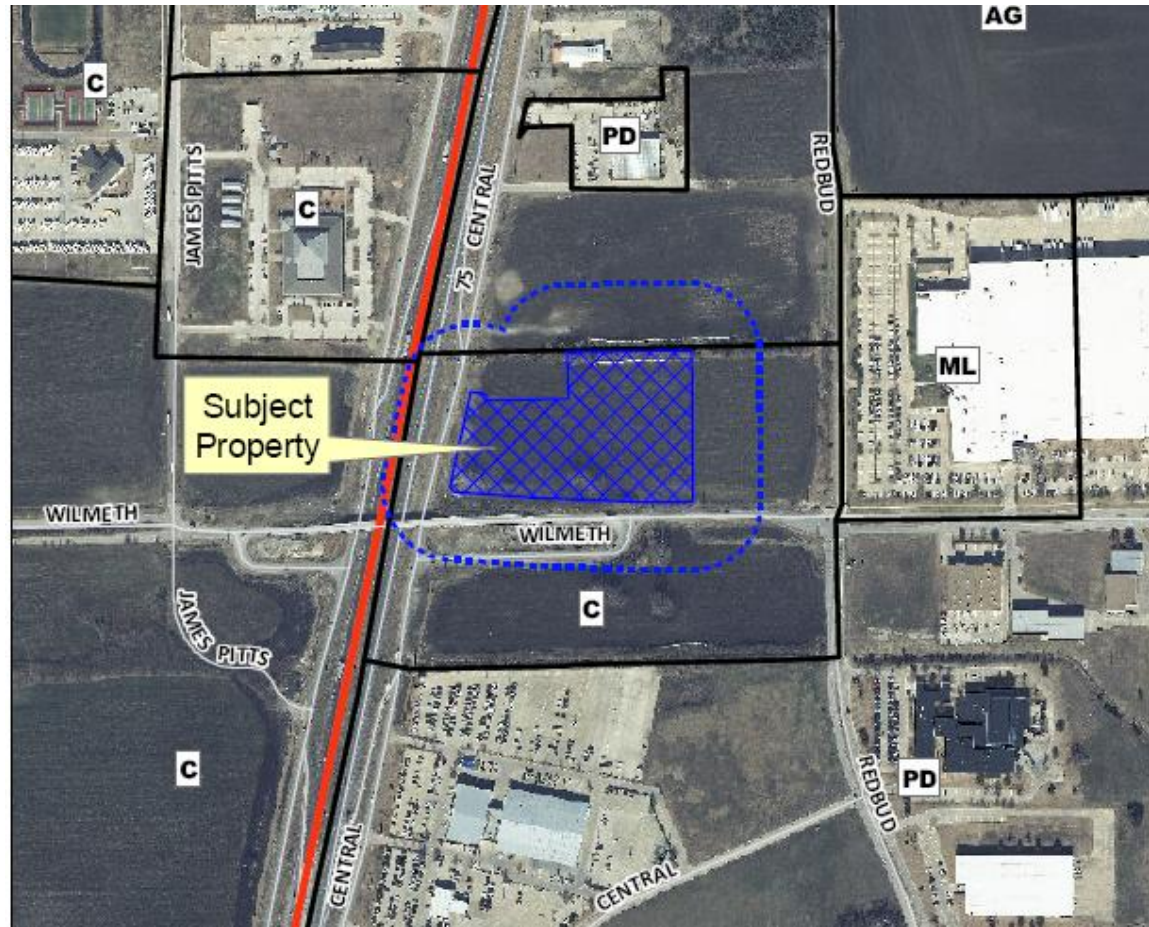
# Case No. 12-011Z

Request to Rezone Approximately 7.48 Acres from “C” – Planned Center District and “CC” – Corridor Commercial Overlay District to “PD” – Planned Development District and “CC” – Corridor Commercial Overlay District, Generally to Modify the Development Standards, Located on the Northeast Corner of Wilmeth Road and U.S. Highway 75 (Central Expressway).

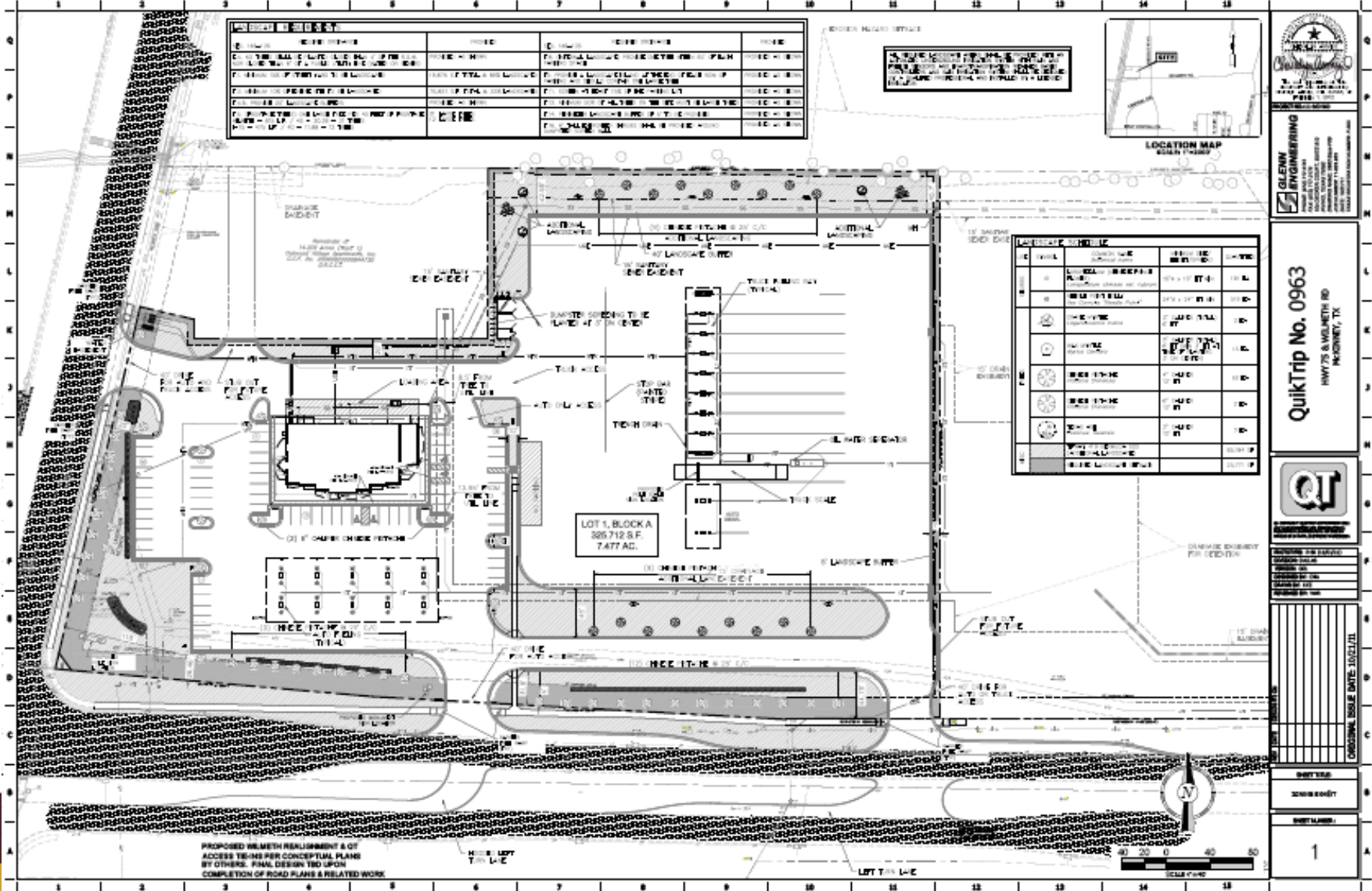
# Location Map



# Aerial Exhibit



# Zoning Exhibit



ZONING EXHIBIT			
LOT 1	LOT 2	LOT 3	LOT 4
[Symbol]	[Symbol]	[Symbol]	[Symbol]
[Symbol]	[Symbol]	[Symbol]	[Symbol]
[Symbol]	[Symbol]	[Symbol]	[Symbol]
[Symbol]	[Symbol]	[Symbol]	[Symbol]
[Symbol]	[Symbol]	[Symbol]	[Symbol]
[Symbol]	[Symbol]	[Symbol]	[Symbol]
[Symbol]	[Symbol]	[Symbol]	[Symbol]
[Symbol]	[Symbol]	[Symbol]	[Symbol]
[Symbol]	[Symbol]	[Symbol]	[Symbol]
[Symbol]	[Symbol]	[Symbol]	[Symbol]
[Symbol]	[Symbol]	[Symbol]	[Symbol]

LOT 1	LOT 2	LOT 3	LOT 4
[Symbol]	[Symbol]	[Symbol]	[Symbol]
[Symbol]	[Symbol]	[Symbol]	[Symbol]
[Symbol]	[Symbol]	[Symbol]	[Symbol]
[Symbol]	[Symbol]	[Symbol]	[Symbol]
[Symbol]	[Symbol]	[Symbol]	[Symbol]
[Symbol]	[Symbol]	[Symbol]	[Symbol]
[Symbol]	[Symbol]	[Symbol]	[Symbol]
[Symbol]	[Symbol]	[Symbol]	[Symbol]
[Symbol]	[Symbol]	[Symbol]	[Symbol]
[Symbol]	[Symbol]	[Symbol]	[Symbol]
[Symbol]	[Symbol]	[Symbol]	[Symbol]



**GLENN ENGINEERING**  
 PROFESSIONAL ENGINEERS  
 1100 WEST WALKWAY  
 SUITE 200  
 WACO, TEXAS 76798  
 (817) 870-1234  
 WWW.GLENNENGINEERING.COM

**QuikTrip No. 0963**  
 184775 S WOLFE RD  
 WACO, TX



DATE: 08/01/23  
 DRAWING NO: 23-00001  
 PROJECT NO: 23-00001

NO.	REVISION

SHEET NO: 1  
 SHEET TOTAL: 1  
 SHEET LABEL: 1



# Staff Recommendation

- Staff recommends denial of the rezoning request due to a lack of conformance with the City of McKinney's Comprehensive Plan.