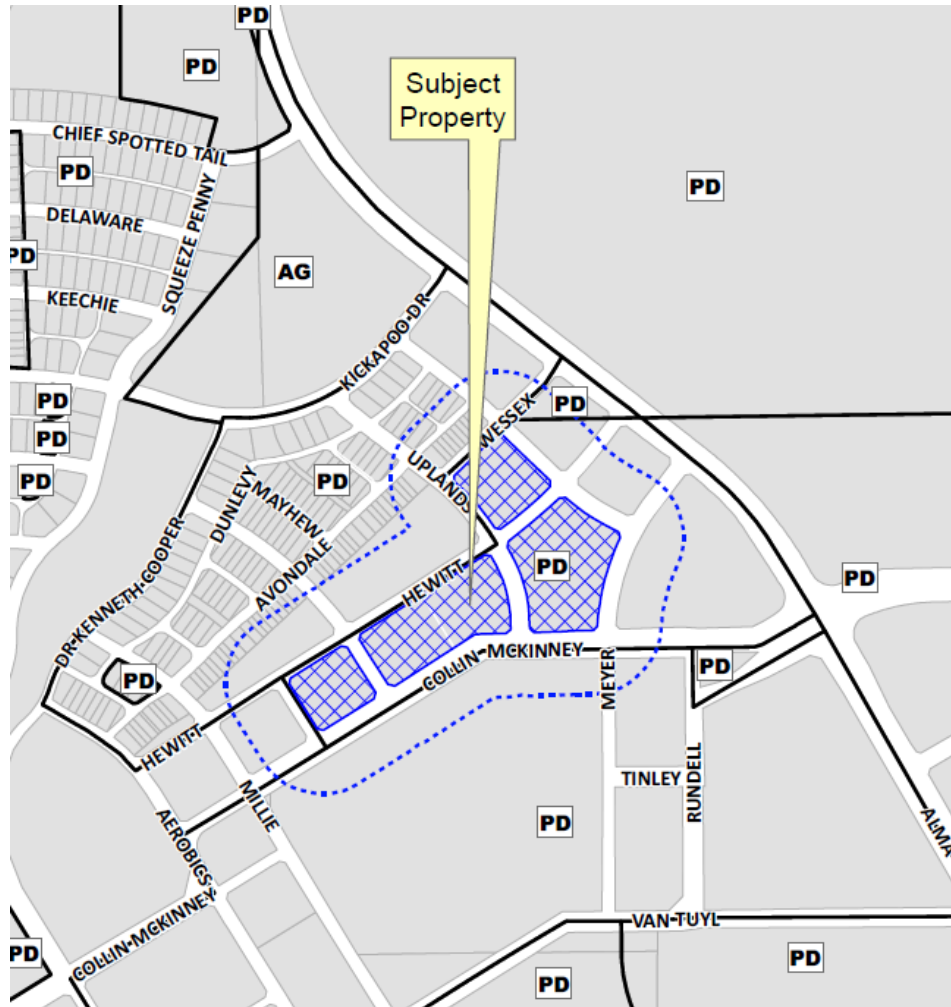


Whole Life  
Rezone  
14-302Z



- MONEY MAGAZINE 2014 -

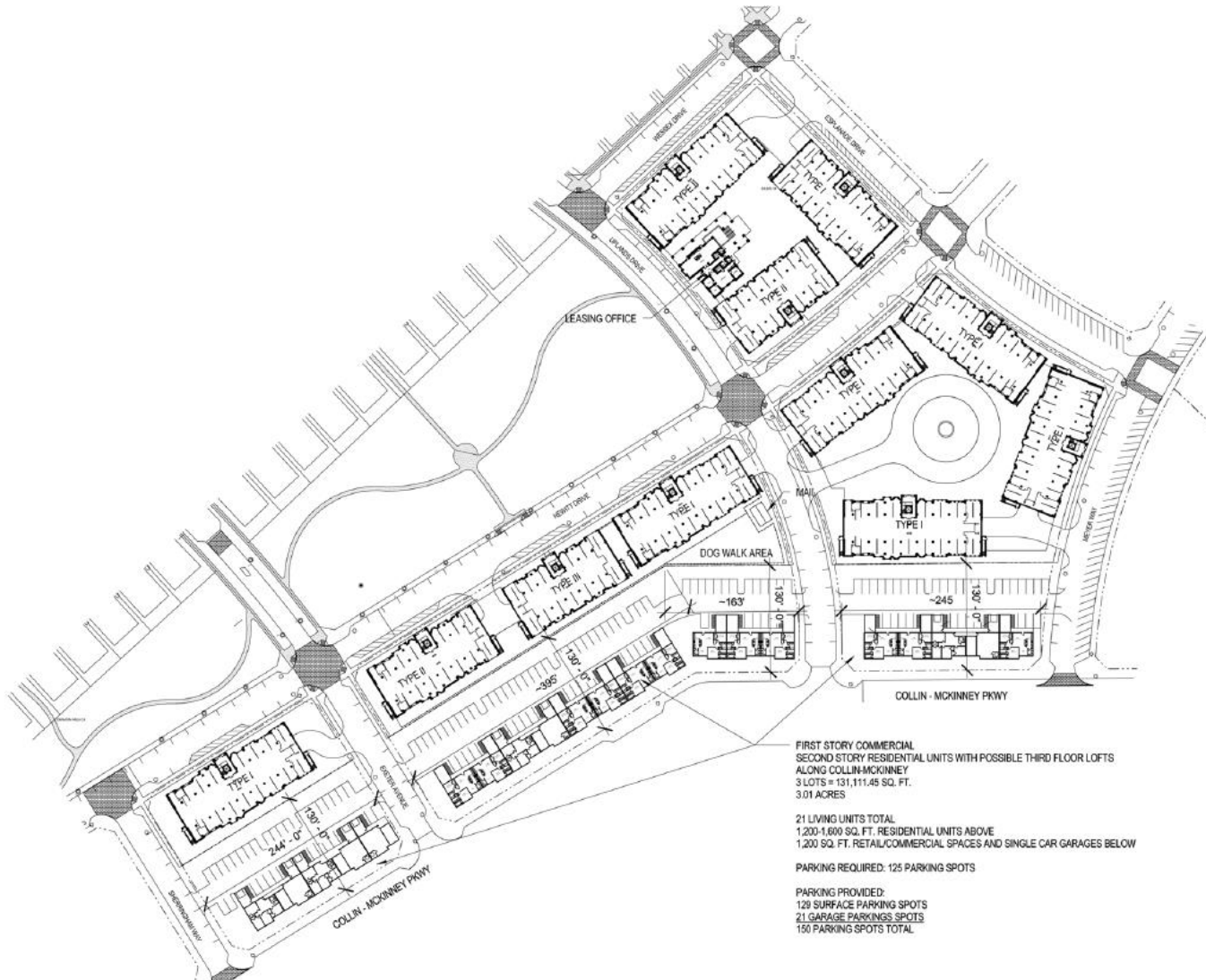
# Location Map



# Aerial Exhibit



# Concept Plan – Informational Only



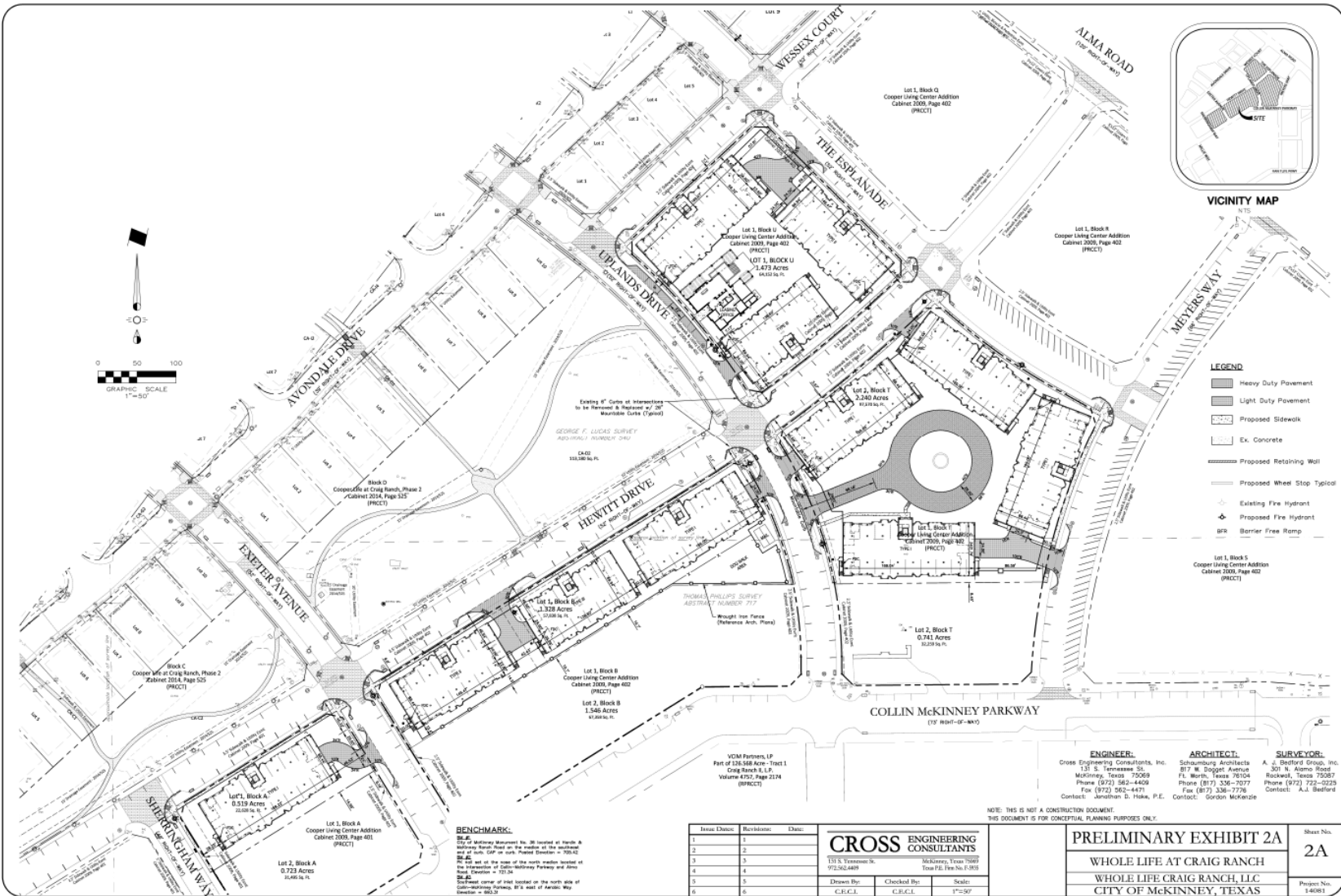
FIRST STORY COMMERCIAL  
 SECOND STORY RESIDENTIAL UNITS WITH POSSIBLE THIRD FLOOR LOFTS  
 ALONG COLLIN-MCKINNEY  
 3 LOTS = 131,111.45 SQ. FT.  
 3.01 ACRES

21 LIVING UNITS TOTAL  
 1,200-1,600 SQ. FT. RESIDENTIAL UNITS ABOVE  
 1,200 SQ. FT. RETAIL/COMMERCIAL SPACES AND SINGLE CAR GARAGES BELOW

PARKING REQUIRED: 125 PARKING SPOTS

PARKING PROVIDED:  
 129 SURFACE PARKING SPOTS  
 21 GARAGE PARKING SPOTS  
 150 PARKING SPOTS TOTAL

# Site Plan A – Informational Only



VICINITY MAP

- LEGEND**
- Heavy Duty Pavement
  - Light Duty Pavement
  - Proposed Sidewalk
  - Ex. Concrete
  - Proposed Retaining Wall
  - Proposed Wheel Stop Typical
  - Existing Fire Hydrant
  - Proposed Fire Hydrant
  - Barrier Free Ramp

**ENGINEER:** Cross Engineering Consultants, Inc.  
 131 S. Tennessee St.  
 McKinney, Texas 75069  
 Phone (972) 562-4409  
 Fax (972) 562-4471  
 Contact: Jonathan D. Hoke, P.E.

**ARCHITECT:** Schaumburg Architects  
 877 W. Diggert Avenue  
 Ft. Worth, Texas 76104  
 Phone (817) 336-7077  
 Fax (817) 336-7778  
 Contact: Gordon McKenzie

**SURVEYOR:** A. J. Bedford Group, Inc.  
 301 N. Alamo Road  
 Rockwall, Texas 75087  
 Phone (972) 722-0225  
 Contact: A.J. Bedford

NOTE: THIS IS NOT A CONSTRUCTION DOCUMENT.  
THIS DOCUMENT IS FOR CONCEPTUAL PLANNING PURPOSES ONLY.

**BENCHMARK:**  
 BM 1: 1/4" x 1/4" x 1/4" Metal Survey Marker, 30' located at North A  
 1/4" x 1/4" x 1/4" Metal Survey Marker on the corner of the corner  
 lot of Subj. GAP on north-south direction = 709.42  
 BM 2: 1/4" x 1/4" x 1/4" Metal Survey Marker, 30' located at North A  
 1/4" x 1/4" x 1/4" Metal Survey Marker on the north-south direction  
 of the intersection of 12121st McKinney Parkway and Silver  
 Ring Lane  
 BM 3: 1/4" x 1/4" x 1/4" Metal Survey Marker, 30' located on the north side  
 of the centerline of the road located on the north side of  
 the intersection of Silver Ring Lane, 81' east of North A  
 direction = 865.21

Issue Date:	Revisions:	Date:
1	1	
2	2	
3	3	
4	4	
5	5	
6	6	

**CROSS ENGINEERING CONSULTANTS**  
 131 S. Tennessee St.  
 McKinney, Texas 75069  
 972.562.4409

Drawn By: C.E.C.L.      Checked By: C.E.C.L.      Scale: 1"=50'

**PRELIMINARY EXHIBIT 2A**

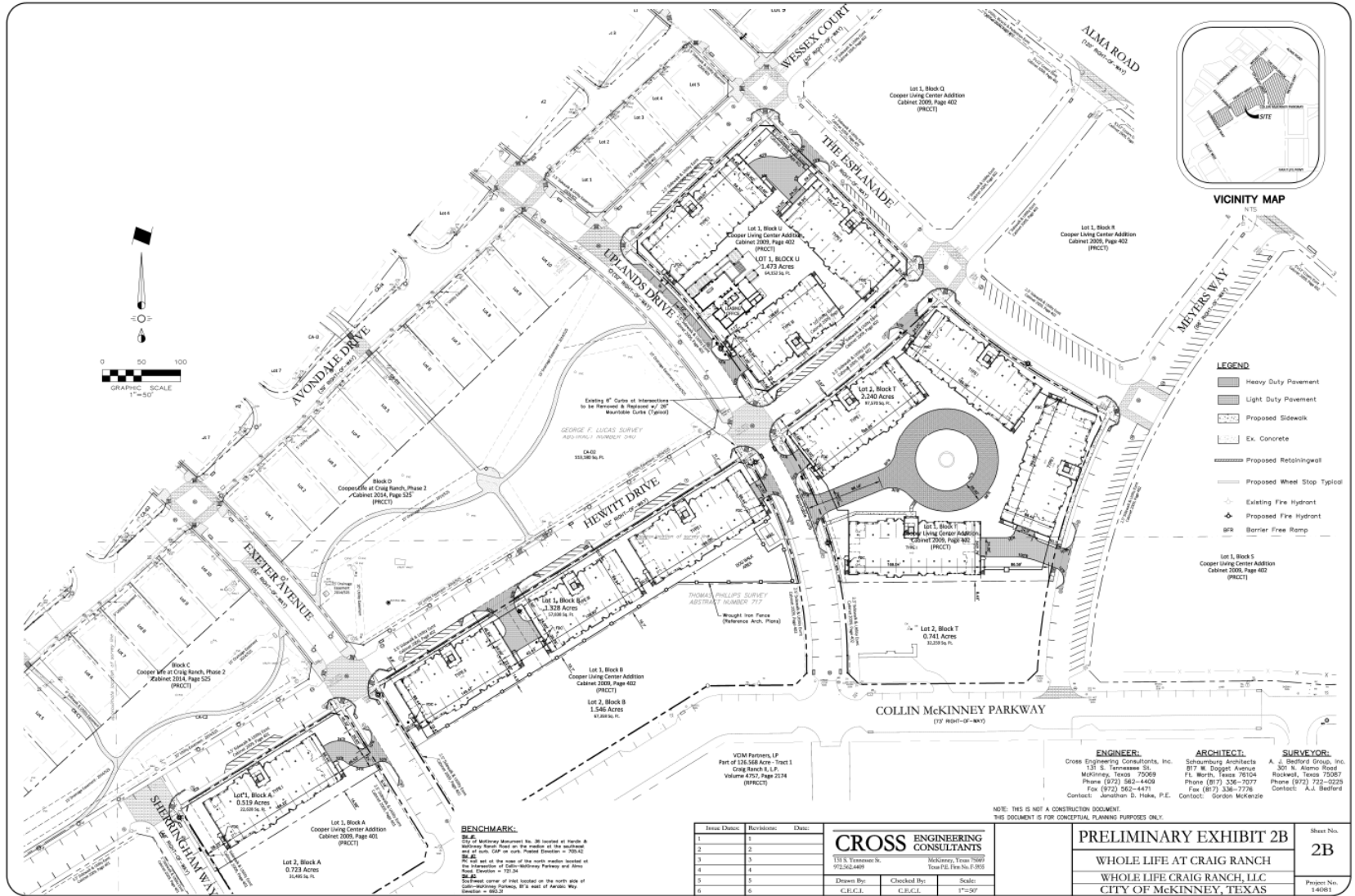
**WHOLE LIFE AT CRAIG RANCH**  
**WHOLE LIFE AT CRAIG RANCH, LLC**  
**CITY OF MCKINNEY, TEXAS**

Sheet No.  
**2A**

Project No.  
14681

WHOLE LIFE AT CRAIG RANCH - EXHIBIT 2A

# Site Plan B – Informational Only



# Rendering – Informational Only

