

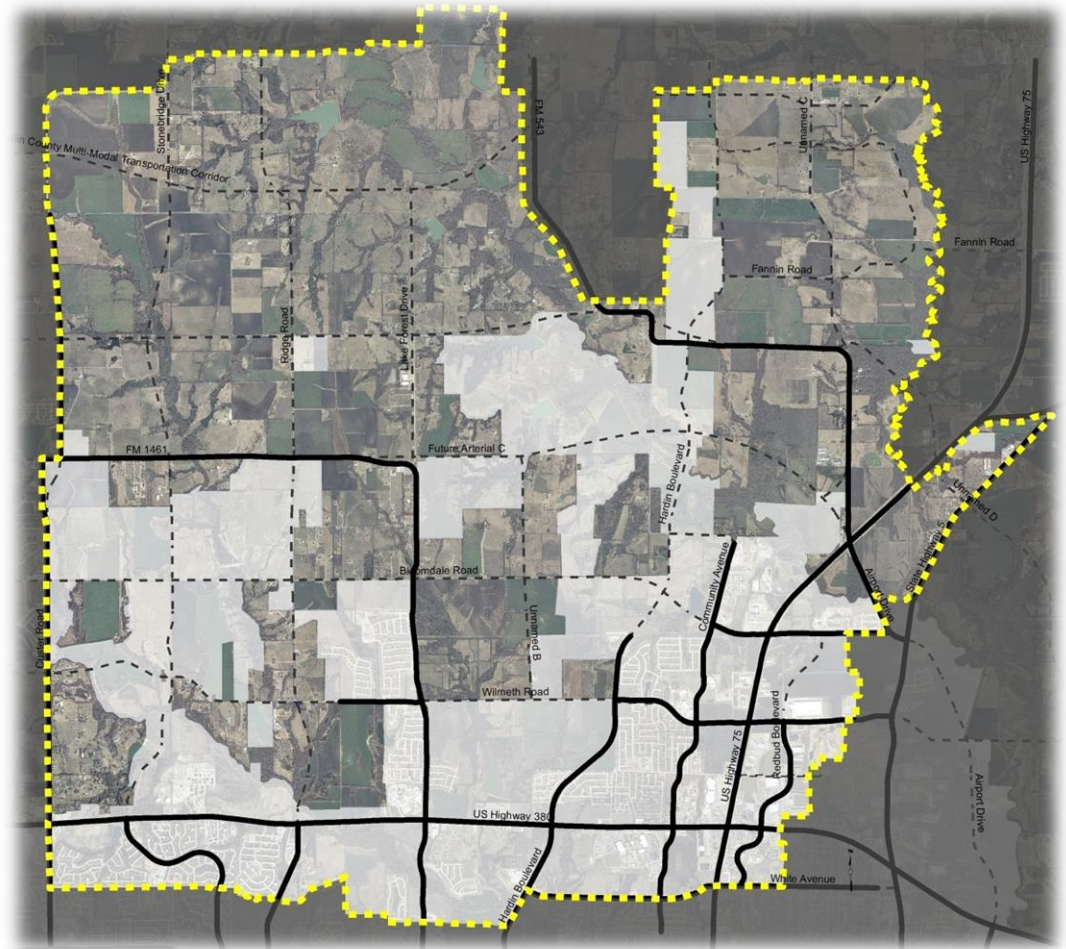
Case # 15-037M

Consider/Discuss/Act on a Resolution
Approving the Northwest Sector Study
Phase I Report

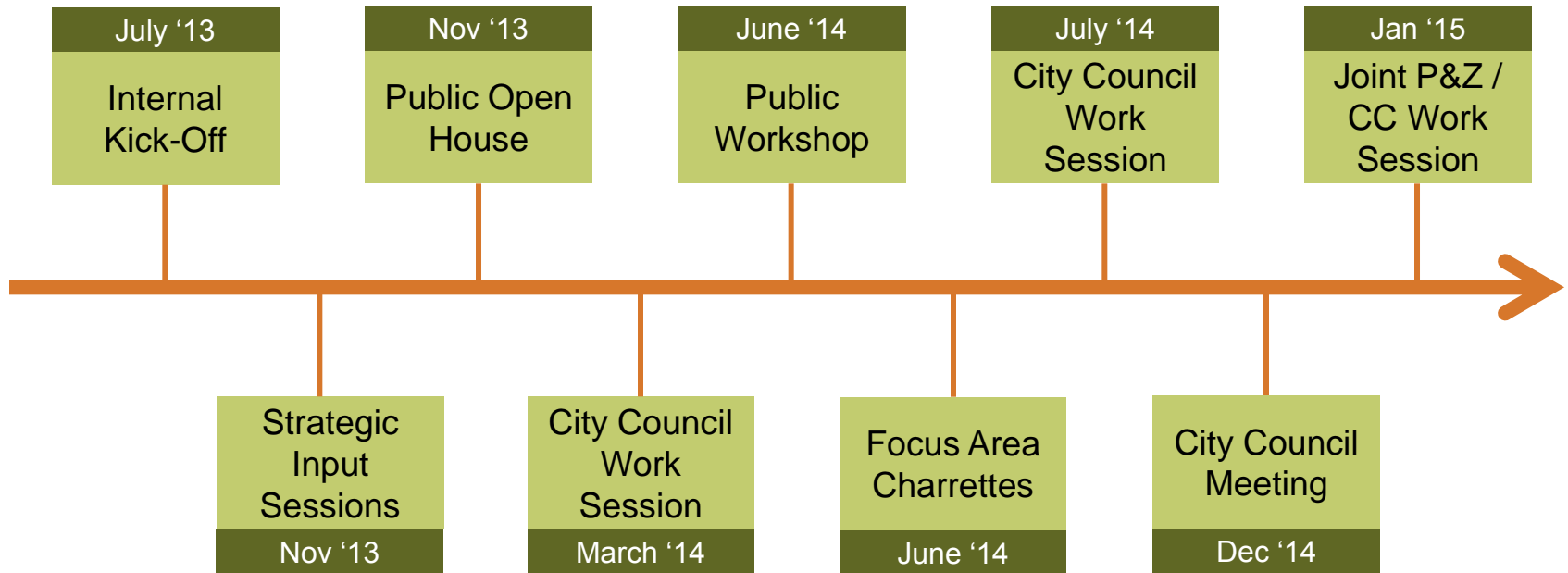


Where is the Northwest Sector?

- 30,000 +/- acres generally north of US 380 and west of US 75
- 42 percent lies within city limits; 52 percent lies within the Extra Territorial Jurisdiction (ETJ)

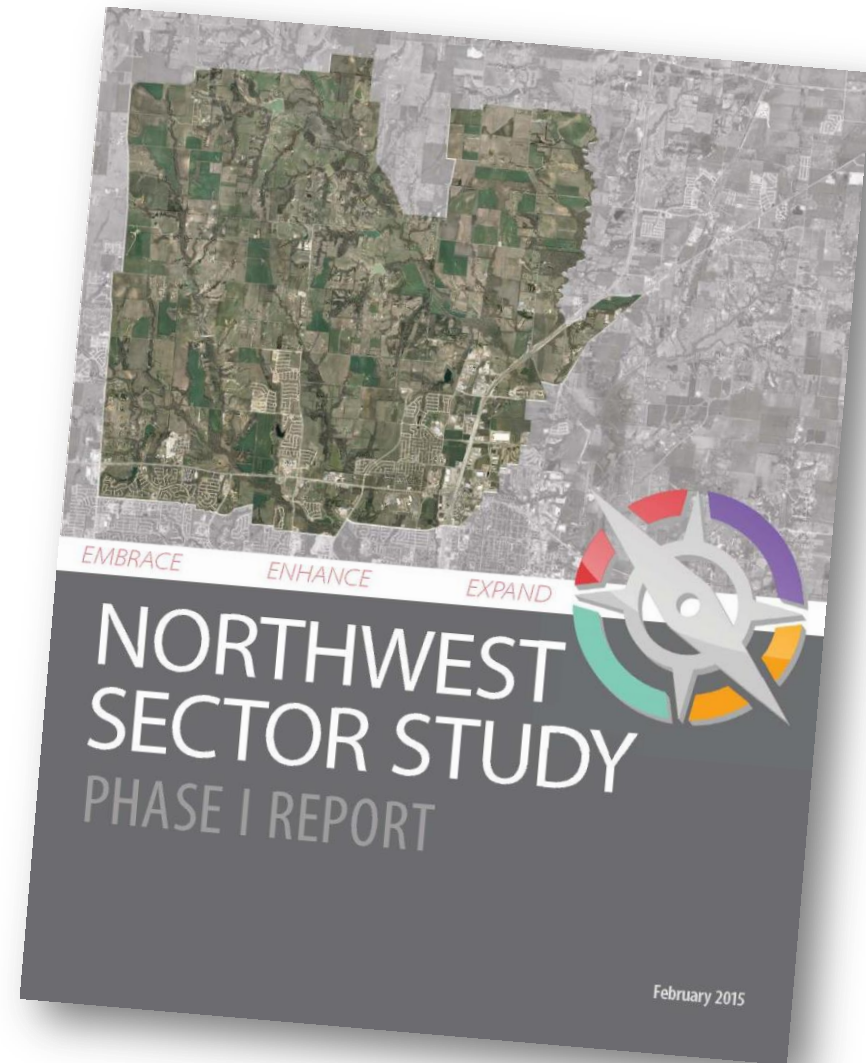


Steps Already Taken...

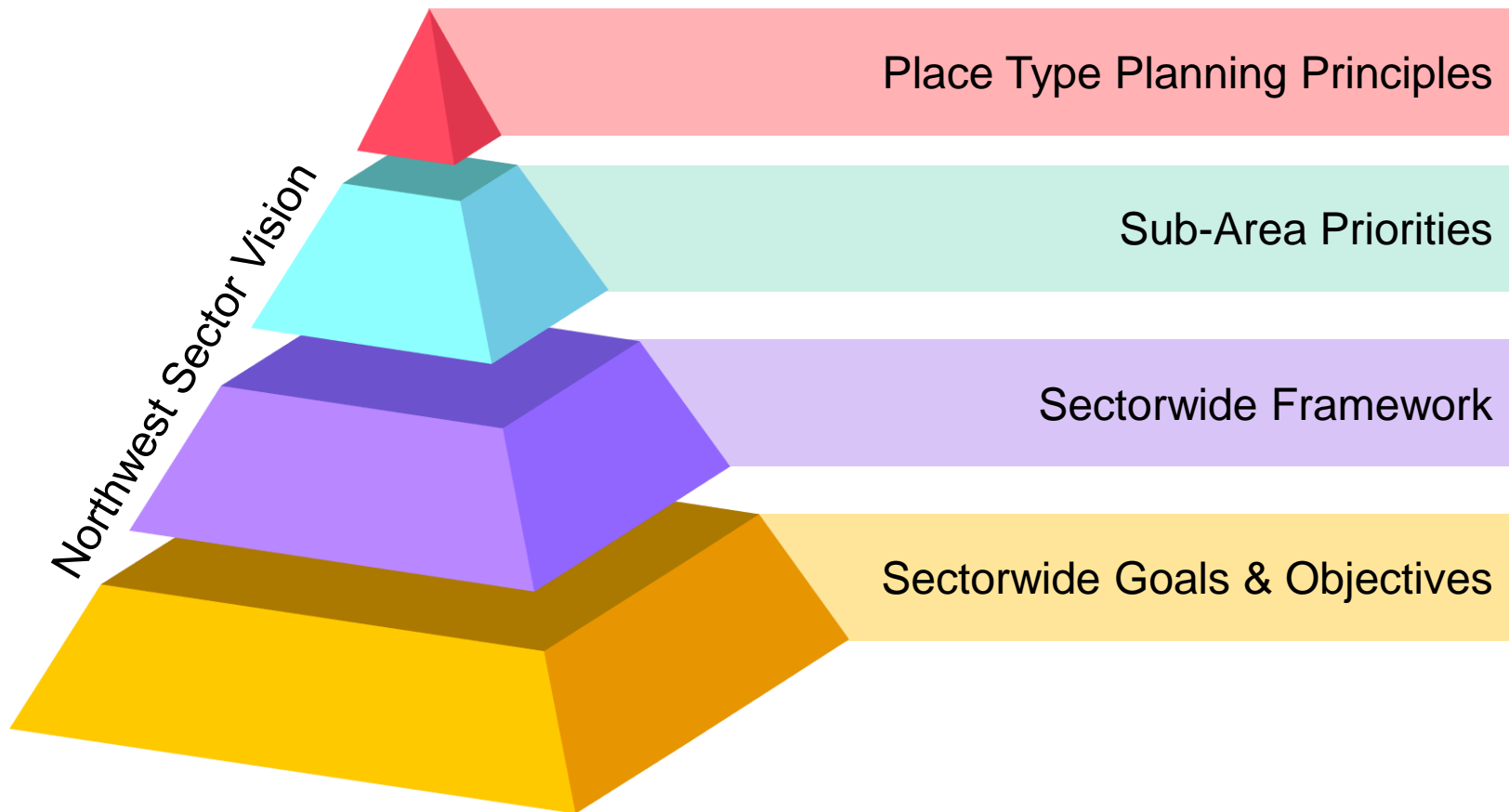


Northwest Sector Study Phase I Report

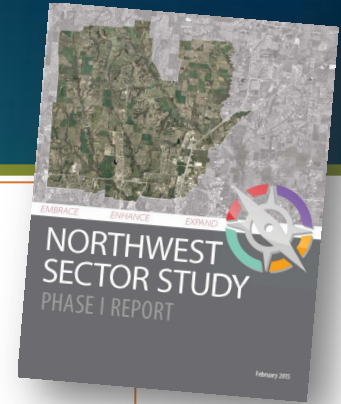
Create a vision for the Northwest Sector that guides the pattern of growth and desired development quality over the near, mid, and long term.



Vision Structure



What's Included in the Phase I Report?



Chapter 1: Introduction

Outline goals of the initiative and the public process

Chapter 2: Existing Conditions Analysis

Summary of the existing physical, demographic and economic characteristics of the Northwest Sector

Chapter 3: The Vision

Details the overall vision for the Northwest Sector, including:

- Sectorwide Goals & Objectives
- Sectorwide Framework
- Sub-Area Priorities
- Place Type Planning Principles

Chapter 4: The Value of the Vision

Provides an economic discussion of the potential added value of key principles and priorities included in the vision

Chapter 5: Implementation

Outlines potential implementation strategies for realizing the vision for the Northwest Sector