

Case No. 12-189M

Conduct a Public Hearing to Consider/Discuss/Act on the Request by the City of McKinney to Amend the Comprehensive Plan, Including the Parks, Recreation, and Open Space Section.

Existing Preservation Plan

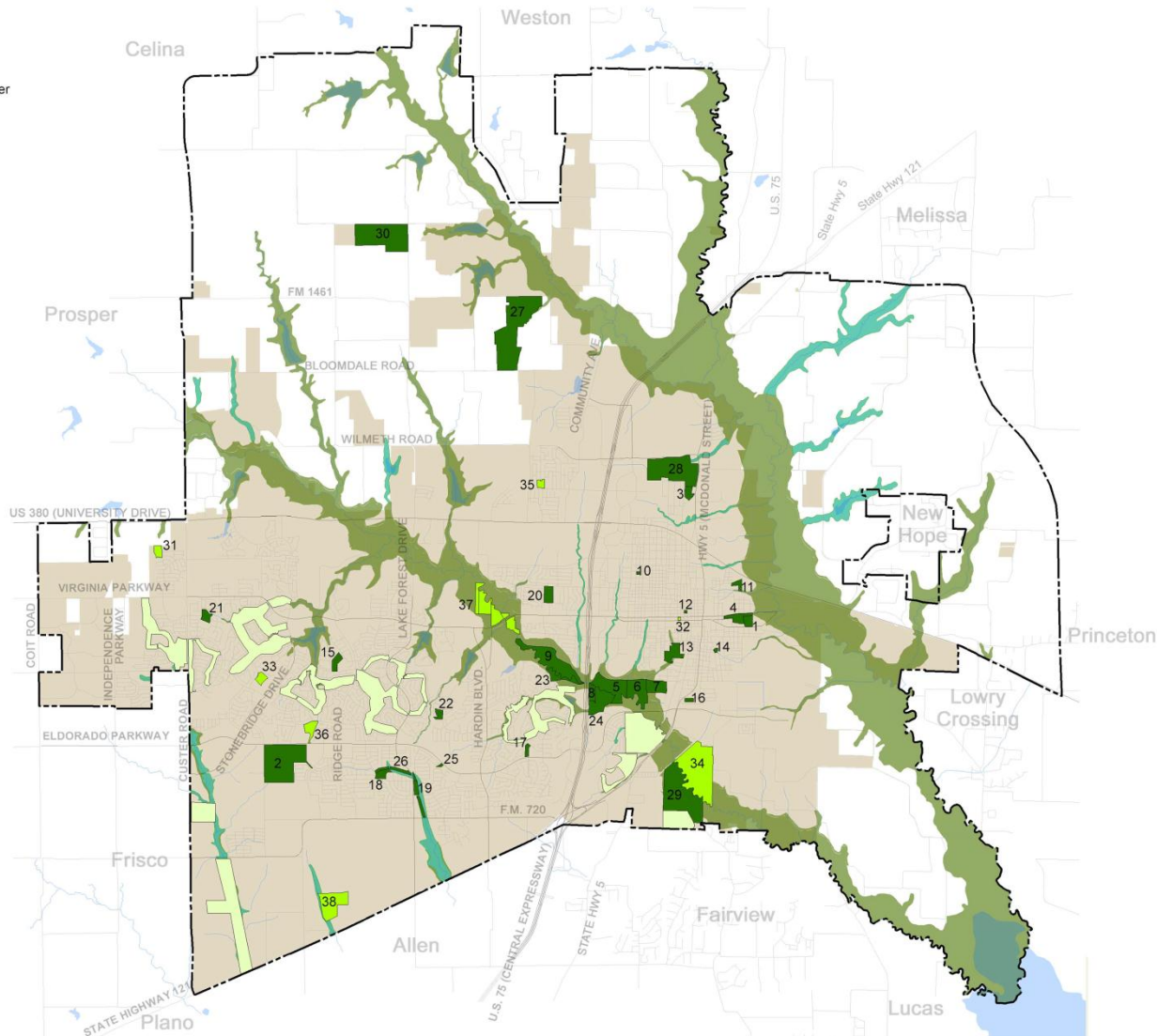
PRESERVATION PLAN

EXISTING PARKS AND FACILITIES

1. Mouzon Ball Fields
2. Gabe Nesbitt Park
3. North Park & Maxfield Swim Pool
4. Old Settler's Park & Recreation Center
5. Towne Lake Park
6. Wilson Creek Softball Complex
7. Senior Recreation Center
8. McKinney Community Center
9. Al Ruschhaupt Soccer Complex
10. Murphy Park
11. Wattle Park
12. Central Park
13. Finch Park
14. Fitzhugh Park
15. W.B. Finney Park
16. Cottonwood Park
17. Valley Creek Park
18. E.A. Randles Park
19. Winniford Park
20. Mary Will Craig Park
21. Falcon Creek Park
22. Hill Top Park
23. Alex Clark Disc Golf Course
24. Wilson Creek Nature Trail
25. Tinker Taylor Park
26. Cottonwood Creek Channel
27. Erwin Park
28. Oak Hollow Golf Course
29. Heard Museum
30. County Youth Park

PROPOSED PARKS

31. Virginia Hills Park
32. Mitchell Memorial Park
33. Eubanks Park
34. Landfill Site
35. McKissick Park
36. South Berkshire Park
37. Sorrell Tract
38. Future Soccer Complex

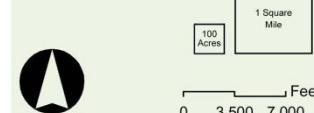


- LEGEND**
- Roads
 - Creeks
 - - - Extra-territorial Jurisdiction
 - City Limit
 - Lakes
 - Existing Park
 - Proposed Park
 - Private Golf Courses
 - High Priority Preservation
 - Medium Priority Preservation

Source: City of McKinney GIS Department Data

22 March 2004

FIGURE 9.2



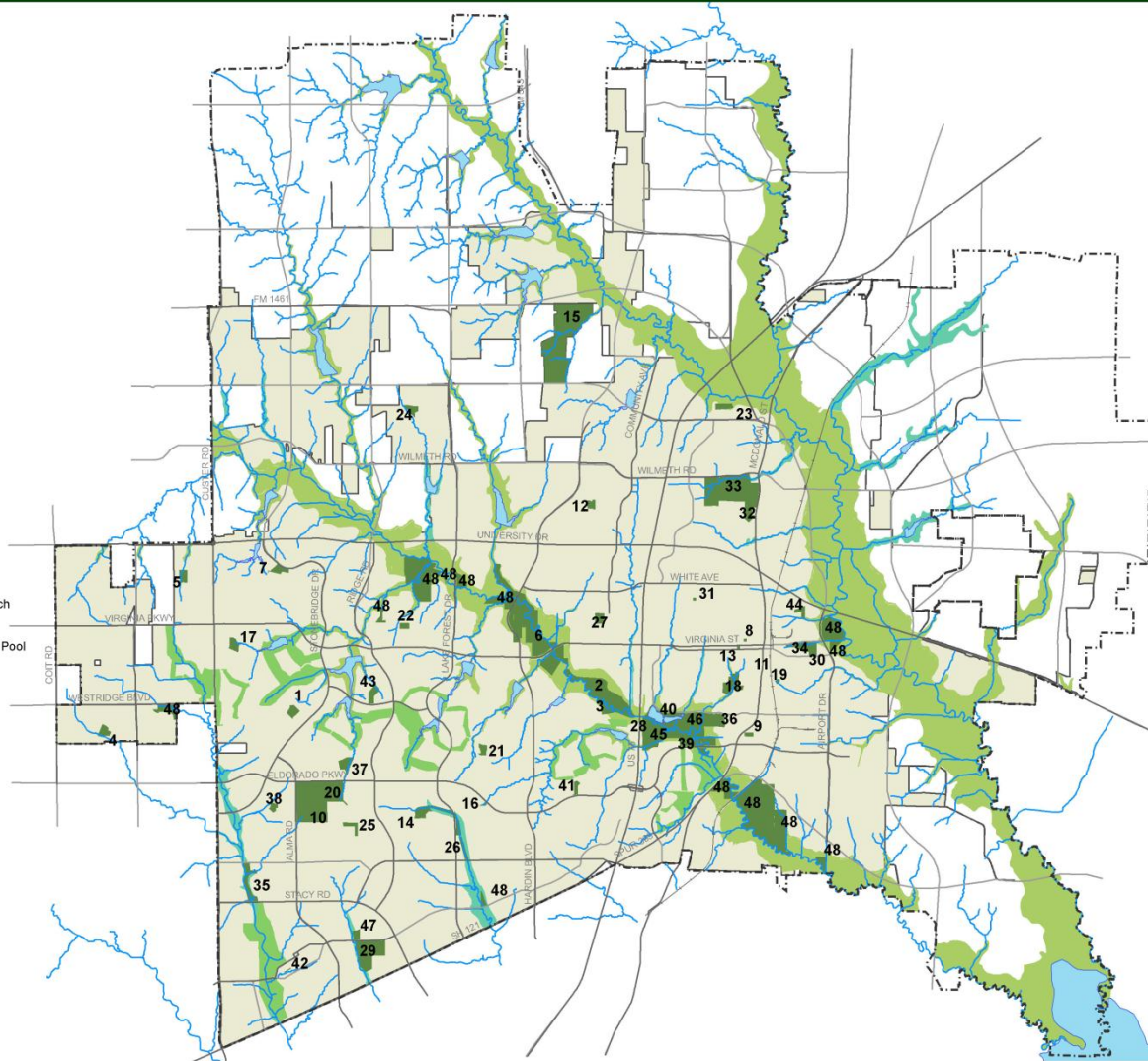
Proposed Preservation Plan

CITY OF MCKINNEY COMPREHENSIVE PLAN

PRESERVATION PLAN

PARKS AND FACILITIES

1. A. Hardy Eubanks, Jr. Park
2. Al Ruschhaupt Soccer Complex
3. Alex Clark Disc Golf Course
4. Ash Woods Park
5. Aviator Park
6. Bonnie Wenk Park
7. Carey Cox Memorial Park
8. Central Park
9. Cottonwood Park
10. The Courts at Gabe Nesbitt
11. Day Labor Plaza
12. Dr. Charles B. McKissick Park
13. Dr. Glenn Mitchell Memorial Park
14. E. A. Randles Park
15. Erwin Park
16. Ezra Lee (Tinker) Taylor Park
17. Falcon Creek Park
18. Finch Park
19. Fitzhugh Park
20. Gabe Nesbitt Community Park
21. Hill Top Park
22. Horizon Park
23. Inspiration Park
24. Jim Ledbetter Park
25. John M. Whisenant Park
26. Katherine B. Winniford Park
27. Mary Will Craig Park
28. McKinney Community Center
29. McKinney Soccer Complex @ Craig Ranch
30. Mouzon Ball Fields
31. Murphy Park
32. North Park & Juanita Maxfield Swimming Pool
33. Oak Hollow Golf Course
34. Old Settlers Park & Recreation Center
35. Rowlett Creek Park
36. Senior Recreation Center
37. Serenity Park
38. Tom Allen Jr. Park
39. Towne Lake Disc Golf
40. Towne Lake Park
41. Valley Creek Park
42. Veterans Memorial Park
43. W. B. Finney Park
44. Wattle Park
45. Wilson Creek Nature Trail
46. Wilson Creek Softball Complex
47. World Collection of Crape Myrtles
48. Undeveloped/Open Space

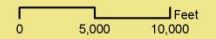


- Extra-territorial Jurisdiction
- Roads
- Railroad
- Proposed Thoroughfare
- Creeks
- City Limits
- Lakes
- Golf Courses
- High Priority Preservation
- Medium Priority Preservation

* Original Adoption 3-22-04 (Ordinance No. 2004-03-035)
 * Amendment #1: 12-4-12 - Revised to reflect acquired parkland, updated footprint, city limits, E.T.J., roads, etc.

DATE December 2012

FIGURE 9.1

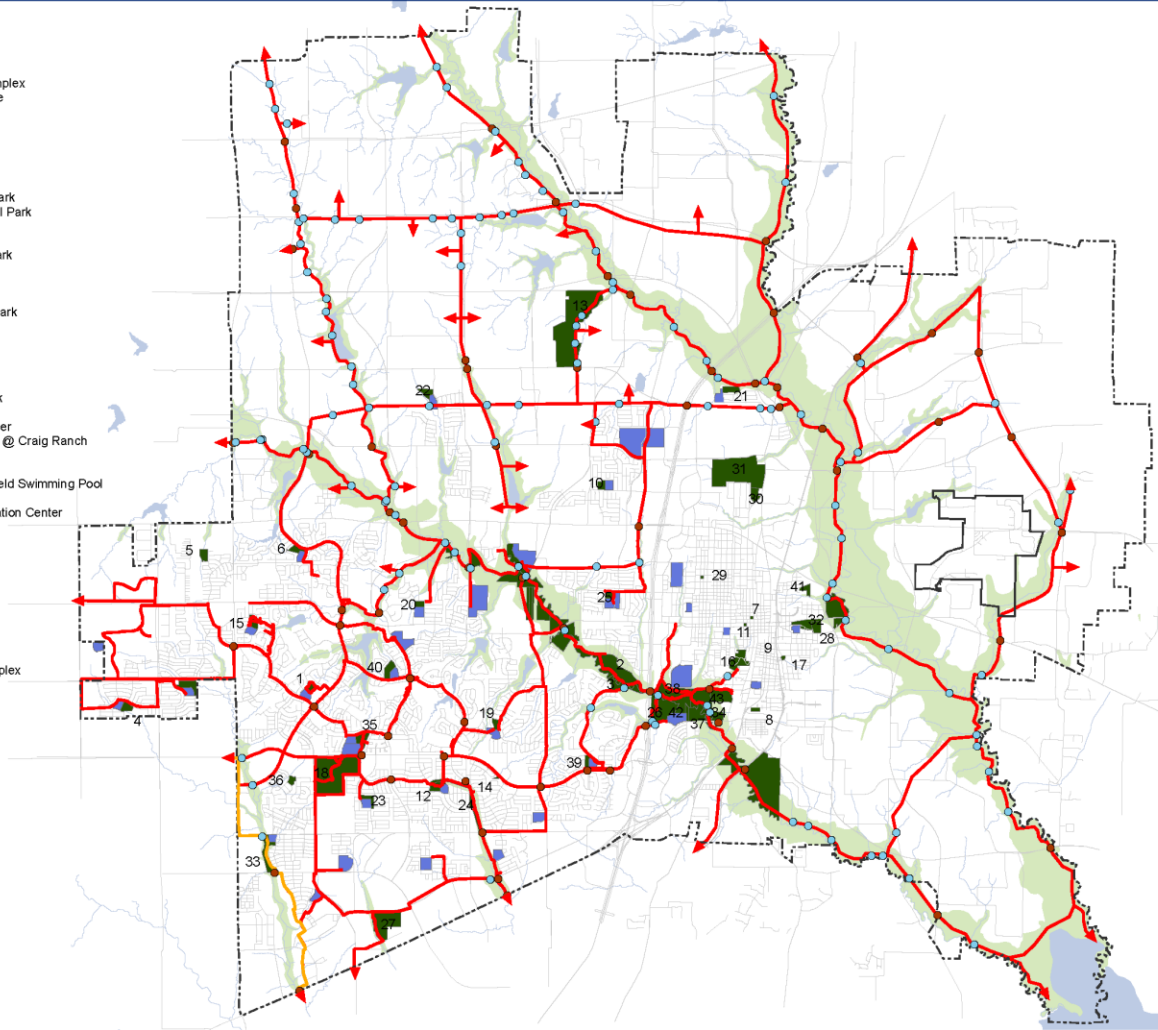


Source: City of McKinney GIS Department Data

Existing Hike and Bike Trails Plan

PARKS AND FACILITIES

1. A. Hardy Eubanks, Jr. Park
2. Al Ruschhaupt Soccer Complex
3. Alex Clark Disc Golf Course
4. Ash Woods Park
5. Aviator Park
6. Carey Cox Memorial Park
7. Central Park
8. Cottonwood Park
9. Day Labor Plaza
10. Dr. Charles B. McKissick Park
11. Dr. Glenn Mitchell Memorial Park
12. E. A. Randles Park
13. Erwin Park
14. Ezra Lee (Tinker) Taylor Park
15. Falcon Creek Park
16. Finch Park
17. Fitzhugh Park
18. Gabe Nesbitt Community Park
19. Hill Top Park
20. Horizon Park
21. Inspiration Park
22. Jim Ledbetter Park
23. John M. Whisenant Park
24. Katherine B. Winniford Park
25. Mary Will Craig Park
26. McKinney Community Center
27. McKinney Soccer Complex @ Craig Ranch
28. Mouson Ball Fields
29. Murphy Park
30. North Park & Juanita Maxfield Swimming Pool
31. Oak Hollow Golf Course
32. Old Settlers' Park & Recreation Center
33. Rowlett Creek Park
34. Senior Recreation Center
35. Serenity Park
36. Tom Allen Jr. Park
37. Towne Lake Disc Golf
38. Towne Lake Park
39. Valley Creek Park
40. W. B. Finney Park
41. Wattle Park
42. Wilson Creek Nature Trail
43. Wilson Creek Softball Complex



MCKINNEY CITY OF MCKINNEY
COMPREHENSIVE PLAN
HIKE AND BIKE TRAILS PLAN

LEGEND

- Bridge
- Off-Grade Crossing
- Six City Trail
- - - Extra-territorial Jurisdiction
- Hike and Bike Trails
- Rail Road
- Roads
- Parkland
- School Sites
- Lakes
- Creeks
- Flood Plain

* Original Adoption 3-22-04 (Ordinance No. 2004-03-035)
 * Amendment #1: 10-15-05 - Revised sections of Ridge Road and Stonebridge Drive north of Bloomdale Road (Ordinance No. 05-10-133)
 * Amendment #2 4-4-06 - realigned the trail in the vicinity of the intersection of the Irving Water Distribution Line Easement and the East Fork of the Trinity River (Ordinance No. 2006-04-042)
 * Amendment #3 6-3-08 - Adding, relocating, and eliminating various hike and bike sections (Ordinance No. 2008-06-055)

Source: City of McKinney GIS Department Data

3 June 2008
 FIGURE 9.3

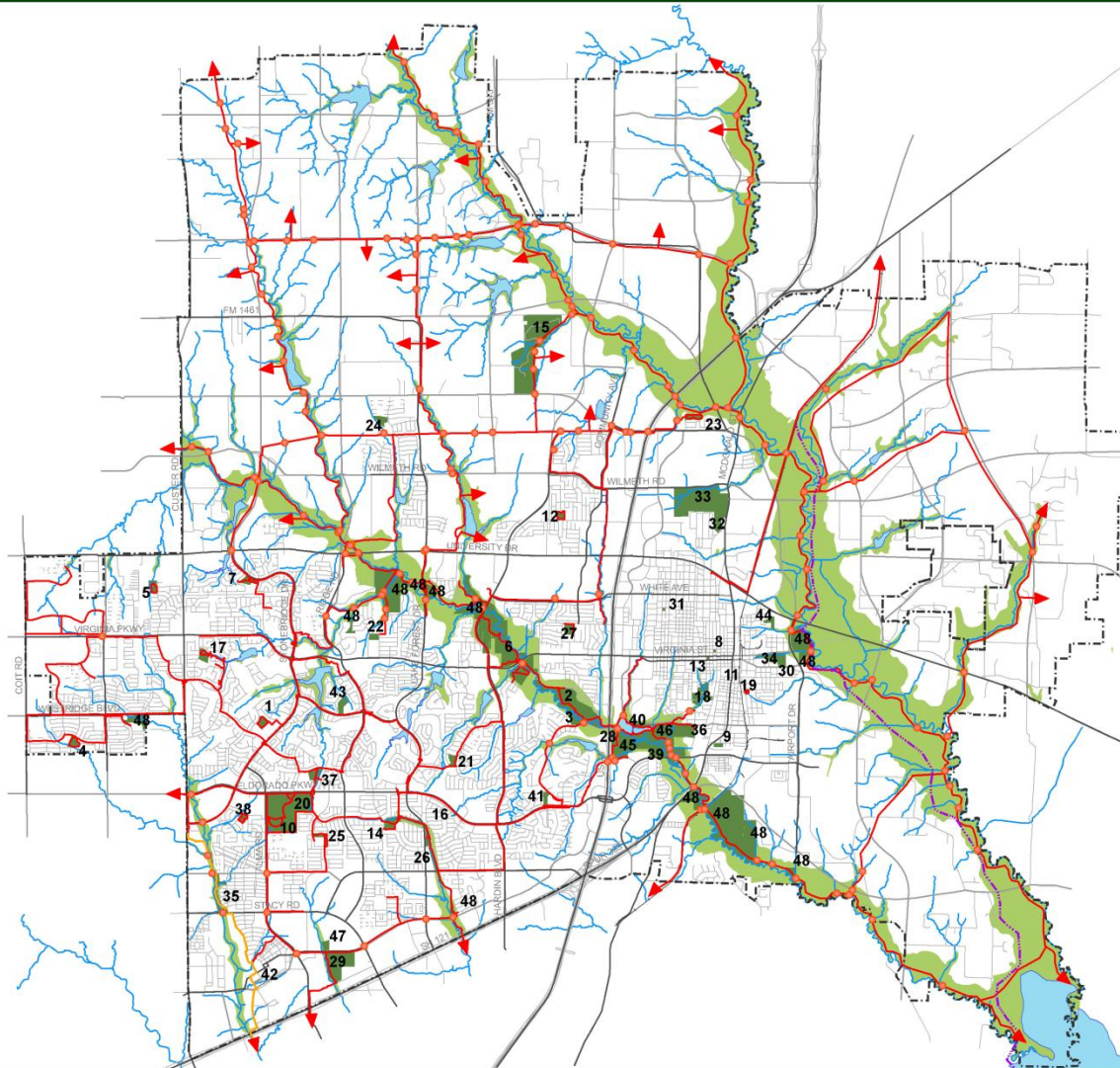
100 Acres
 1 Square Mile

0 5,000 10,000 Feet

Proposed Hike and Bike Trails Plan

PARKS AND FACILITIES

1. A. Hardy Eubanks, Jr. Park
2. Al Ruschhaupt Soccer Complex
3. Alex Clark Disc Golf Course
4. Ash Woods Park
5. Aviator Park
6. Bonnie Wenk Park
7. Carey Cox Memorial Park
8. Central Park
9. Cottonwood Park
10. The Courts at Gabe Nesbitt
11. Day Labor Plaza
12. Dr. Charles B. McKissick Park
13. Dr. Glenn Mitchell Memorial Park
14. E. A. Randles Park
15. Erwin Park
16. Ezra Lee (Tinker) Taylor Park
17. Falcon Creek Park
18. Finch Park
19. Fitzhugh Park
20. Gabe Nesbitt Community Park
21. Hill Top Park
22. Horizon Park
23. Inspiration Park
24. Jim Ledbetter Park
25. John M. Whisenant Park
26. Katherine B. Winniford Park
27. Mary Will Craig Park
28. McKinney Community Center
29. McKinney Soccer Complex @ Craig Ranch
30. Mouzon Ball Fields
31. Murphy Park
32. North Park & Juanita Maxfield Swimming Pool
33. Oak Hollow Golf Course
34. Old Settlers Park & Recreation Center
35. Rowlett Creek Park
36. Senior Recreation Center
37. Serenity Park
38. Tom Allen Jr. Park
39. Towne Lake Disc Golf
40. Towne Lake Park
41. Valley Creek Park
42. Veterans Memorial Park
43. W. B. Finney Park
44. Wattle Park
45. Wilson Creek Nature Trail
46. Wilson Creek Softball Complex
47. World Collection of Grape Myrtles
48. Undeveloped/Open Space



CITY OF MCKINNEY COMPREHENSIVE PLAN HIKE AND BIKE TRAILS MASTER PLAN

- Bridge/Grade Crossing
 - Extra-territorial Jurisdiction
 - Hike and Bike Trail
 - Six City Trail
 - Equestrian Trail
 - Roads
 - Proposed Thoroughfare
 - Railroad
 - Creeks
 - Lakes
 - Park Property
 - Flood Plain
- The arrows represent potential connections to future school sites with the intent of connecting all school sites with the main trails along major creeks.

* Original Adopted 3-22-04 (Ordinance No. 2004-03-036)
 * Amendment #1: 10-13-05 - Revised sections of Ridge Road and Stonebridge Drive north of Bloomdale Road (Ordinance No. 05-10-133).
 * Amendment #2: 4-4-06 - realigned the trail in the vicinity of the intersection of the Irving Water Distribution Line Easement and the East Fork of the Trinity River (Ordinance No. 2006-04-042).
 * Amendment #3: 6-3-08 - Adding, relocating, and eliminating various hike and bike sections (Ordinance No. 2008-06-055).
 * Amendment #4: Adding, relocating and eliminating various hike and bike sections. (Ordinance No. 2012-.)

DATE: December 2012
FIGURE 9.2

100 Acres
 1 Square Mile

Source: City of McKinney GIS Department Data



Staff Recommendation

Staff recommends approval of the proposed amendment to the Comprehensive Plan, including the Parks, Recreation and Open Space Section as outlined in the Staff Report