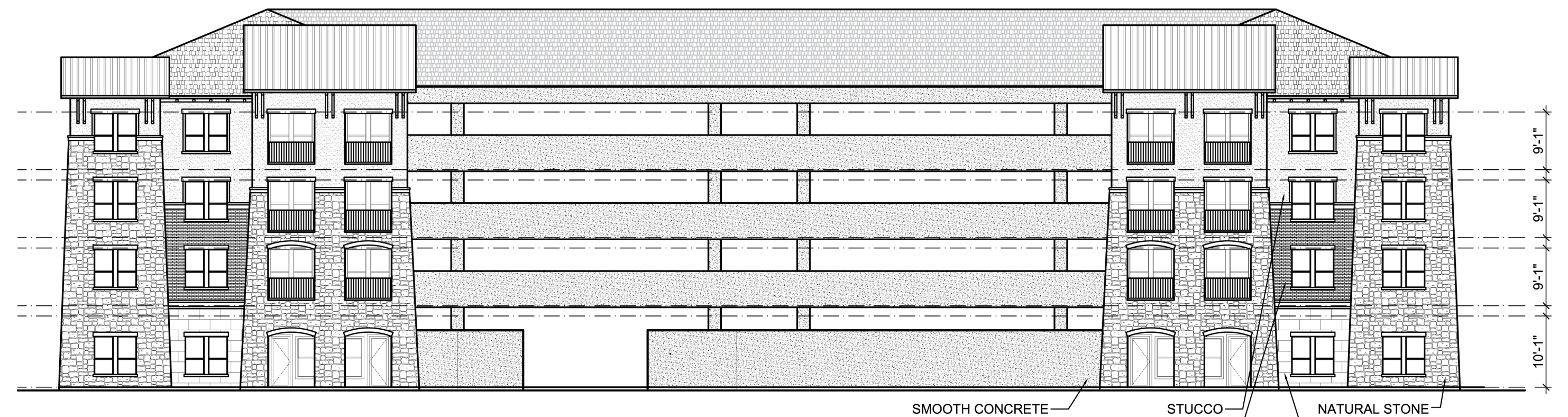




04 EXTERIOR REAR ELEVATION  
1/16" = 1'-0"



02 EXTERIOR SIDE ELEVATION  
1/16" = 1'-0"



02 EXTERIOR SIDE ELEVATION  
1/16" = 1'-0"



01 EXTERIOR FRONT ELEVATION  
1/16" = 1'-0"

# SWBC AT CRAIG RANCH

McKINNEY, TEXAS

JANUARY 06, 2016



RECEIVED  
By Planning Department at 2:24 pm, Jan 06, 2016