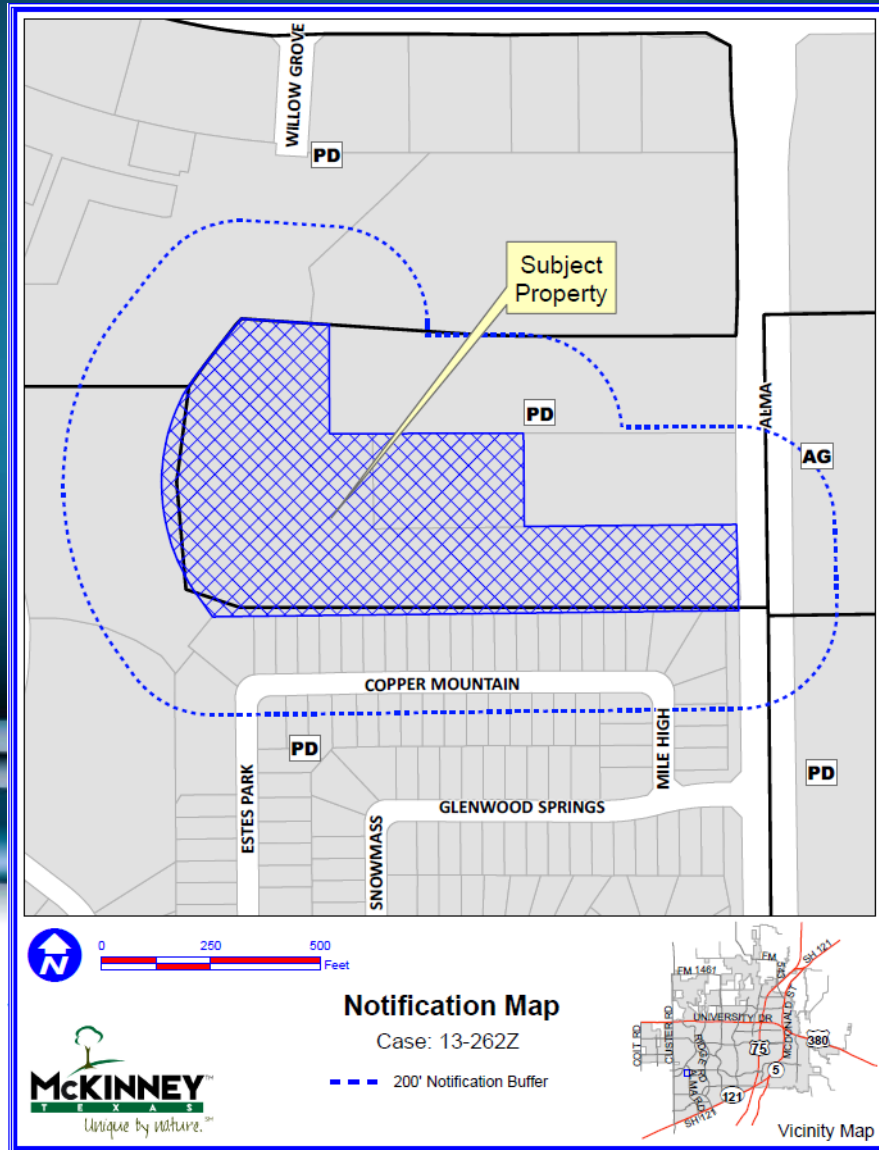


# Case No. 13-262Z

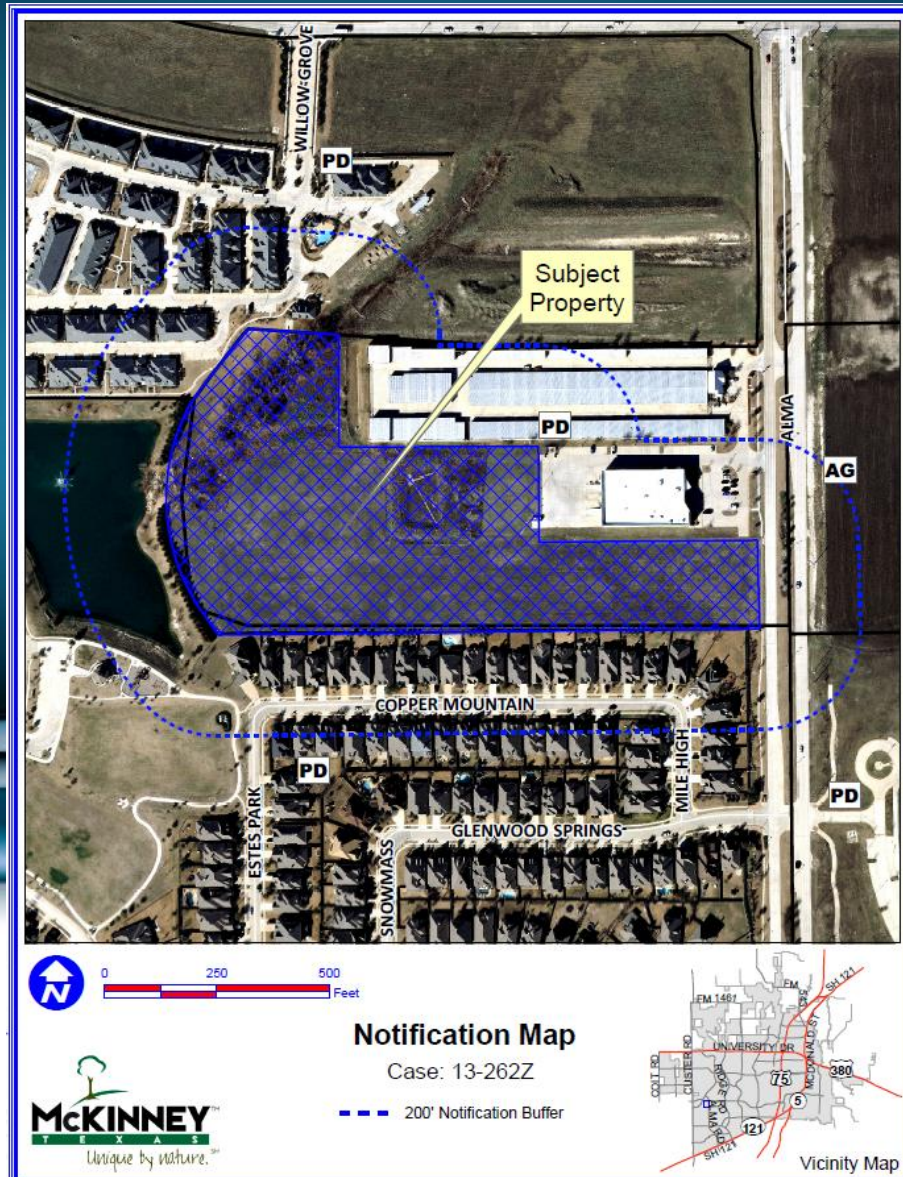
Colin Ashcroft – Alma Road



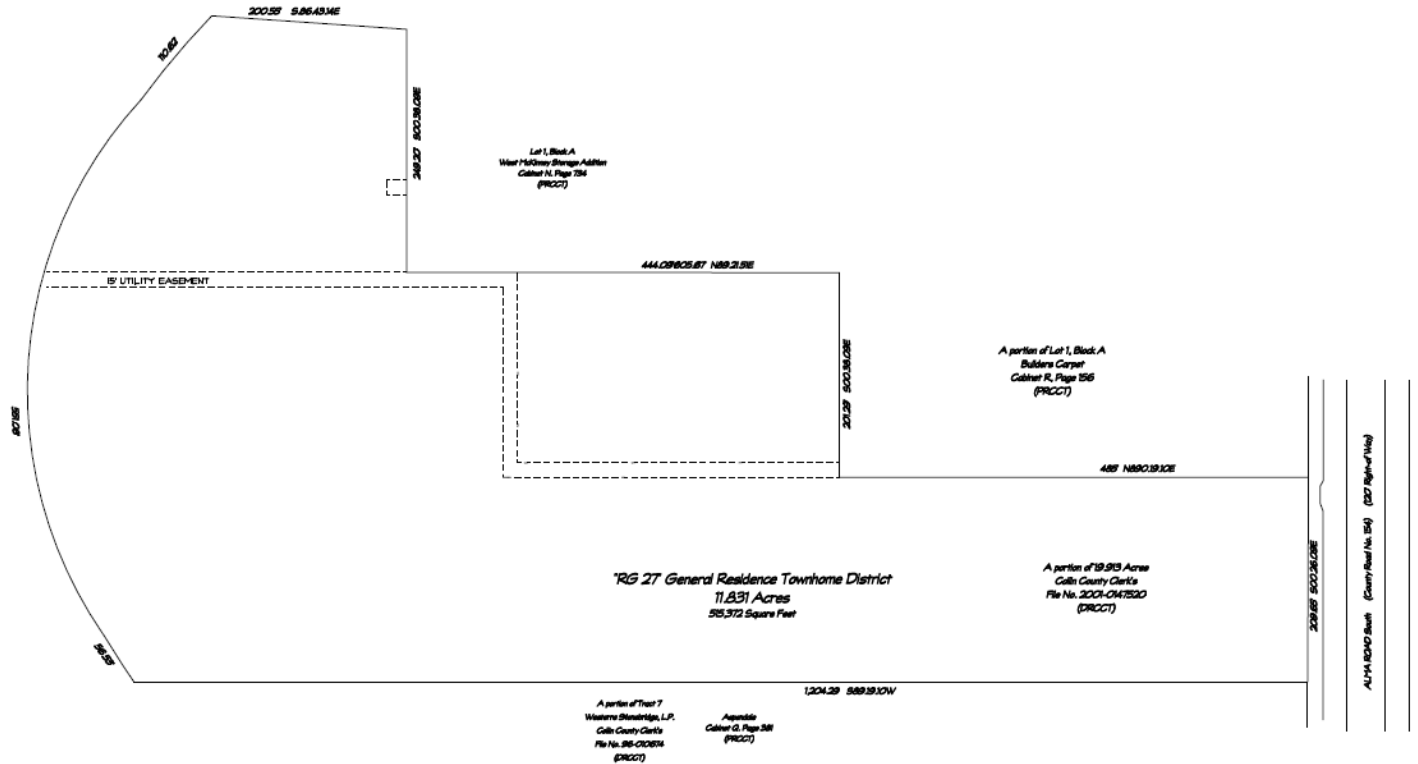
# Location Map



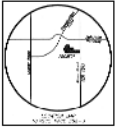
# Aerial Exhibit



# Proposed Zoning Exhibit



RECEIVED  
By Kathy Wright at 12:11 pm, Dec 09, 2013



revisions:

\_\_\_\_\_

\_\_\_\_\_



**creative architects**  
SCOTT D. TODGETT, ARCHITECT

1024 creshwood drive  
gallatin, montana 59044  
774-834-812  
www.creativearchitect.com  
scott@creative.com

Zoning Exhibit

2013608  
december 8, 2013  
© copyright 2013  
creative architects