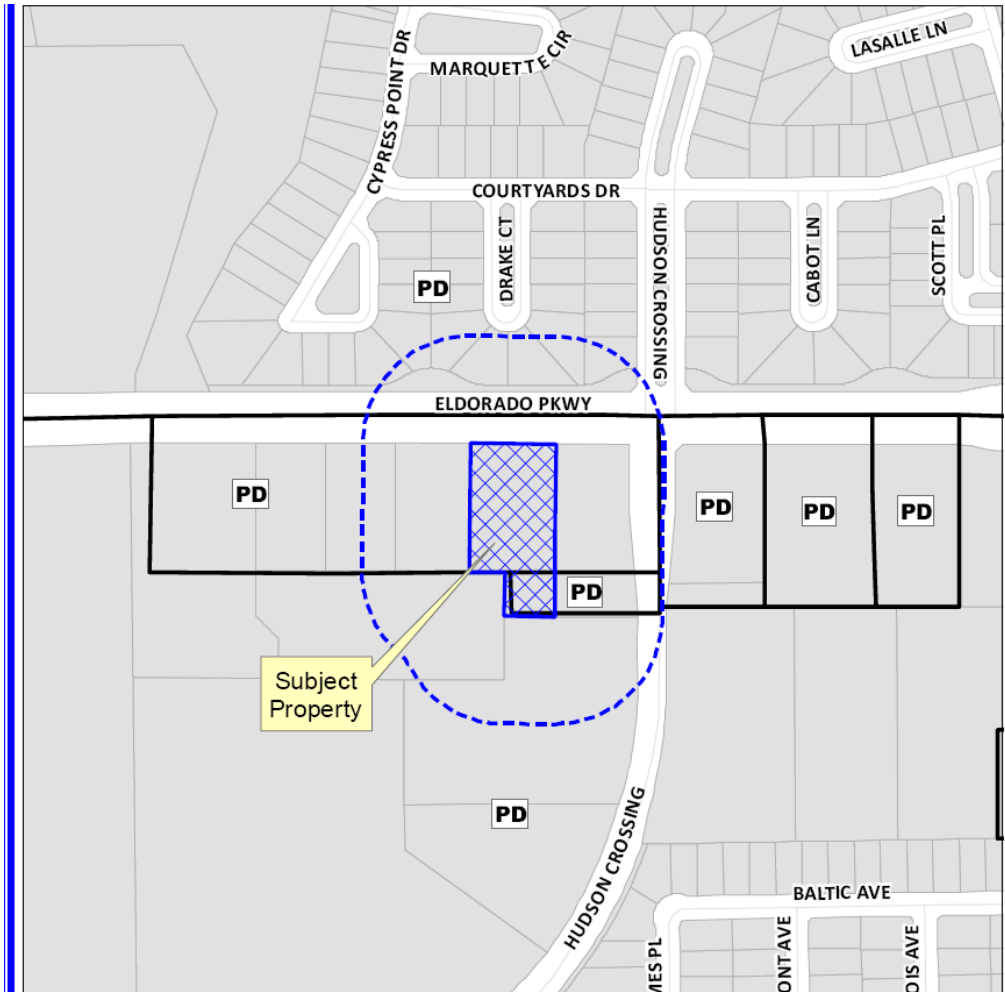


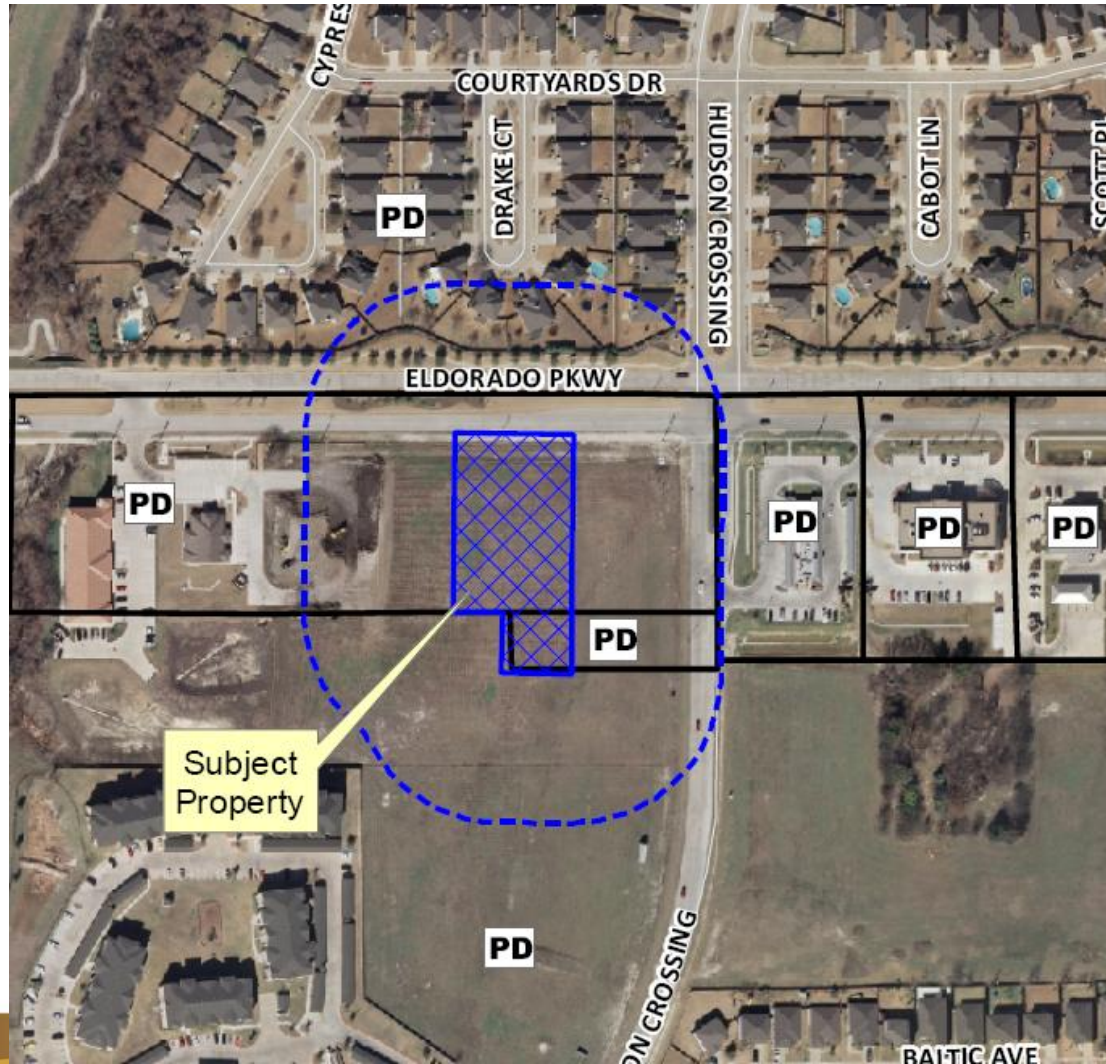
Case No. 11-065SUP

Conduct a Public Hearing to Consider/Discuss/Act on the Request by Pogue Engineering & Development Company, Inc., on Behalf of Carrington Partners, for Approval of a Specific Use Permit Request to Allow for a Restaurant with Drive Through, Approximately 1.34 Acres, Located on the South Side of Eldorado Parkway and Approximately 200 Feet West of Hudson Crossing.

Location Map



Aerial Exhibit



Staff Recommendation

- Staff recommends approval of the specific use permit as outlined in the Staff Report