

CITY OF MCKINNEY, TEXAS, ORDINANCE NO. 1277

AN ORDINANCE ABANDONING THE EAST/WEST STREET LOCATED BETWEEN LOTS 1 AND 2, BLOCK B AND LOT 34, BLOCK B OF THE MILLIE MUSE ADDITION TO THE CITY OF MCKINNEY; RESERVING AN UTILITY EASEMENT THEREIN; AND PROVIDING FOR AN EFFECTIVE DATE OF THIS ORDINANCE.

THAT WHEREAS, the owners of all of the property adjoining the East/West street located between Lots 1 and 2, Block B and Lot 34, Block B of the Millie Muse Addition in the City of McKinney, Texas have petitioned the City Council of the City of McKinney, Texas to close and abandon said alley; and

WHEREAS, after due notice and hearing held before the Planning and Zoning Commission of the City of McKinney, such Commission recommended that such petition be granted; and,

WHEREAS, after due notice and hearing held before the City Council of the City of McKinney, the Council finds that such street is no longer needed for vehicular traffic and that leaving the same open for vehicular traffic would constitute a hazard and inconvenience for those residents residing adjacent to said property, and that the same should be closed and abandoned;

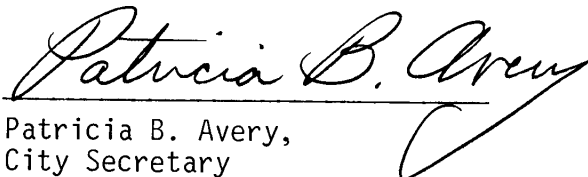
NOW, THEREFORE, BE IT ORDAINED BY THE CITY COUNCIL OF THE CITY OF MCKINNEY, TEXAS:

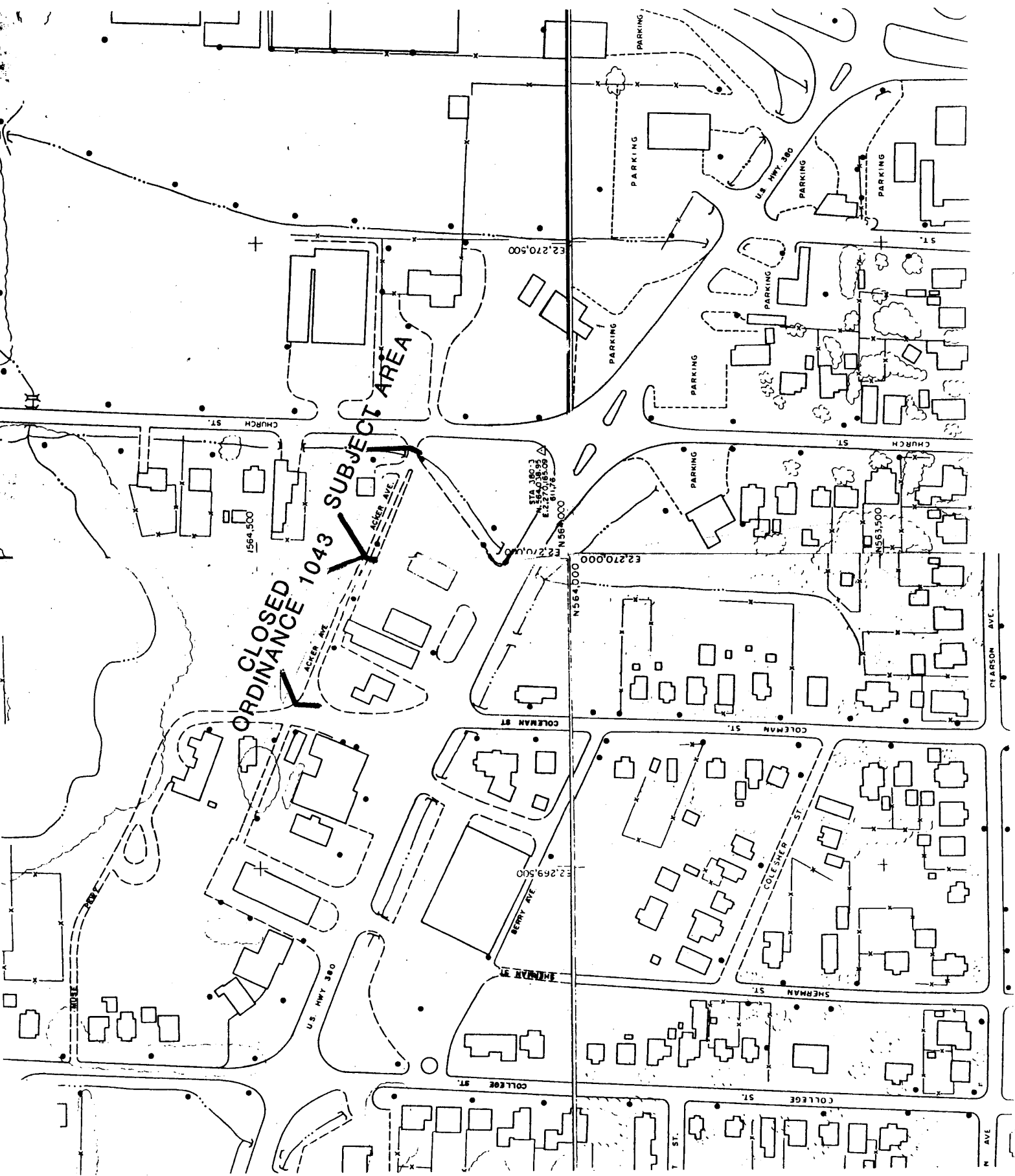
Section I: That the East/West street located between Lot 1 and 2 Block B and Lot 34, Block B of the Millie Muse Addition in the City of McKinney, Texas, is hereby closed and abandoned, except that the City of McKinney here reserves for itself, its successors and assigns, an easement along, over, under and across said street for the construction and maintenance of utilities.

Section II: This Ordinance shall take effect immediately upon its adoption.

DULY PASSED AND APPROVED by the City Council of the City of McKinney, Texas, on this the 16th day of February 1982.

CORRECTLY ENROLLED:


Patricia B. Avery,
City Secretary



CLOSED ORDINANCE 1043 SUBJECT AREA

E2,270,500

E2,270,000

E2,269,500

STA 0603
E.2,270,88.05
611.76

N 964,000

N 564,000

1564,500

1563,500

PARKING

PARKING

PARKING

PARKING

PARKING

PARKING

PARKING

PARKING

PARKING

PARKING

PARKING

PARKING

PARKING

PARKING

PARKING

PARKING

PARKING

PARKING

PARKING

PARKING

PARKING

PARKING

PARKING

PARKING

PARKING

PARKING

PARKING

PARKING

PARKING

PARKING

PARKING

PARKING

PARKING

CHURCH ST.

CHURCH ST.

COLEMAN ST.

COLEMAN ST.

PEARSON AVE.

SHERMAN ST.

SHERMAN ST.

COLLEGE ST.

COLLEGE ST.

N AVE.

U.S. HWY 380

ACKLER AVE.

BERRY AVE.

COLEMAN ST.

SHERMAN ST.

COLLEGE ST.

ST.

ST.

ST.