

# Land Use and Tax Base Summary

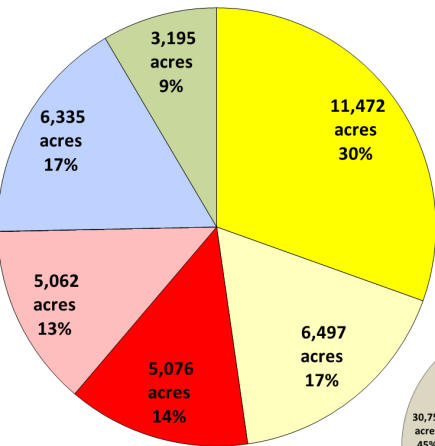
City of McKinney (2016)

## Land Use Summary

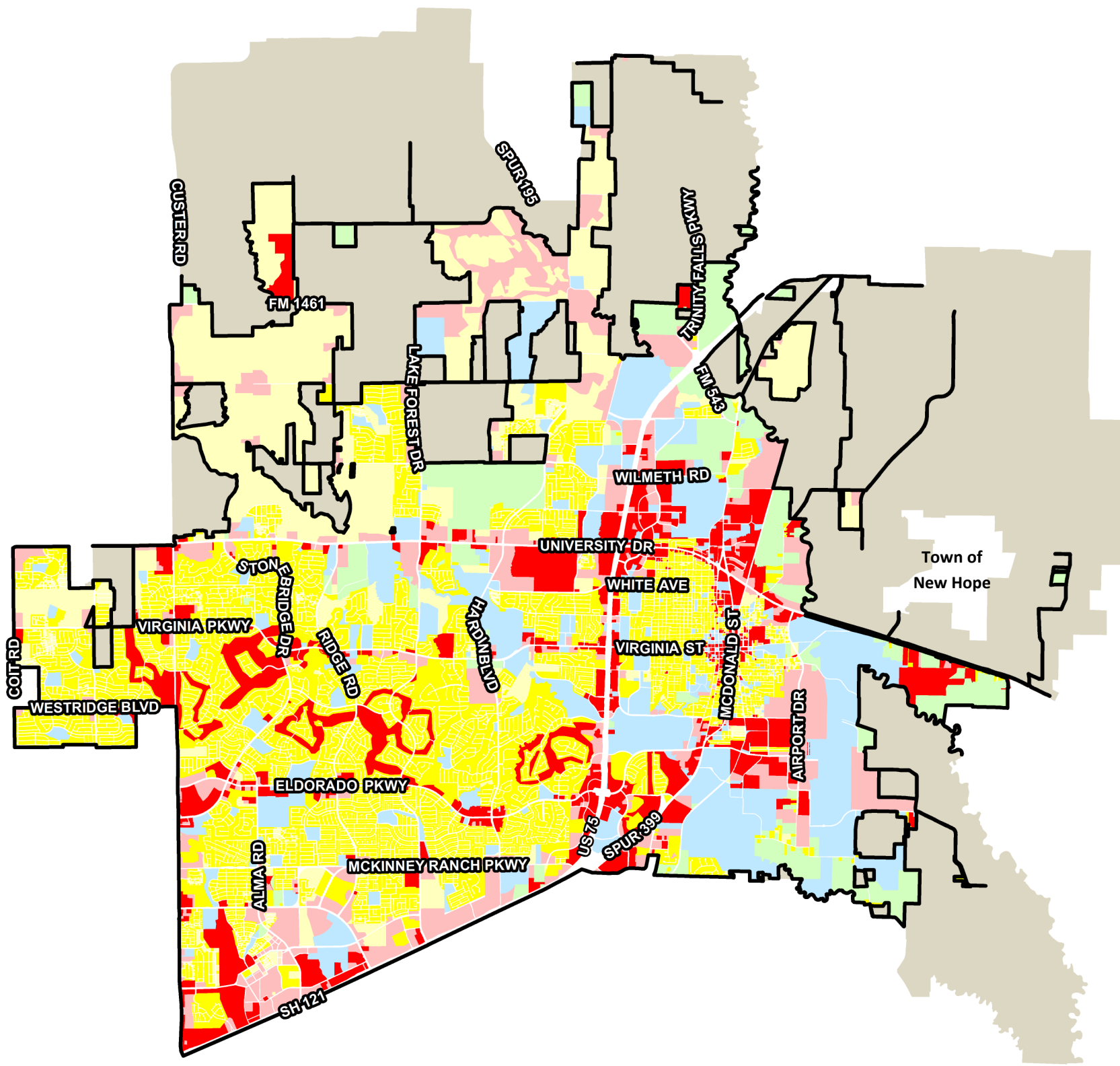
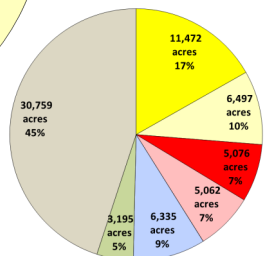
Below is a summary of existing and anticipated land uses as of January 2016 based on information obtained from the Collin Central Appraisal District's certified tax roll in conjunction with approved zoning requests (for parcels currently undeveloped).

	Acres
Residential	11,471.5
Vacant Residential	6,497.3
<b>Total Residential</b>	<b>17,968.9 (26.2%)</b>
Non-Residential	5,076.2
Vacant Non-Residential	5,062.5
<b>Total Non-Residential</b>	<b>10,138.7 (14.8%)</b>
Mixed-Use	0.0
Vacant Mixed-Use	6.6
<b>Total Mixed-Use<sup>1</sup></b>	<b>6.6 (0%)</b>
Institutional (non-taxable)	6,335.0
<b>Total Institutional (non-taxable)</b>	<b>6,335.0 (9.2%)</b>
Agricultural/Undetermined	3,195.1
<b>Total Agricultural/Undetermined<sup>2</sup></b>	<b>3,195.1 (4.6%)</b>
<b>Total Acres (city limits only)</b>	<b>37,644.2 (55%)</b>
Extraterritorial Jurisdiction (ETJ)	30,758.8
<b>Total Extraterritorial Jurisdiction<sup>3</sup></b>	<b>30,758.7 (44.9%)</b>
<b>Total Acres</b>	<b>68,403.0</b>

### Citywide Only



### Citywide and ETJ

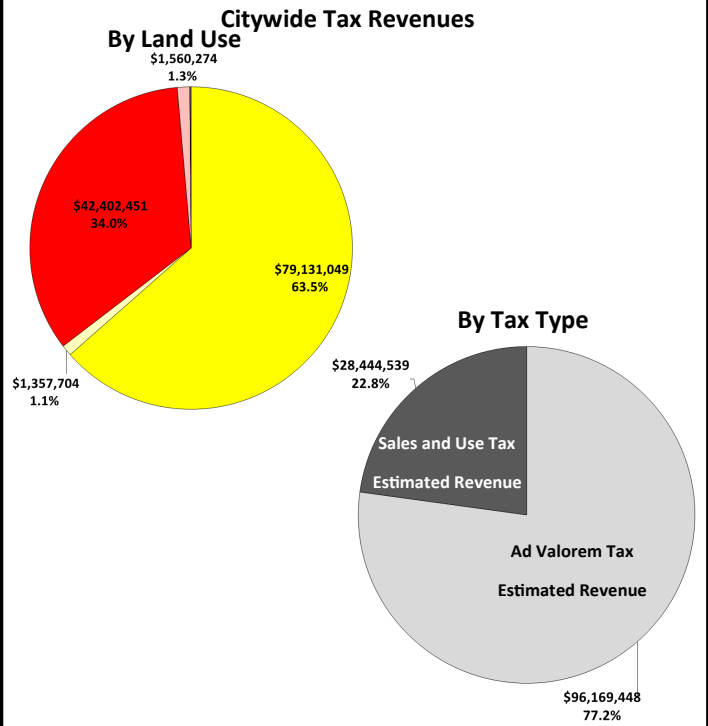


## Tax Base Summary<sup>4</sup>

Based on the existing land uses in this module, below is a summary of the estimated tax revenues as of January 2016. These revenues are aggregated from Collin Central Appraisal District (for Ad Valorem taxes) and from the Texas Comptroller of Public Accounts (for Sales and Use taxes).

Land Use	Ad Valorem	Sales Tax	Total
Residential	\$ 79,131,049	\$ -	\$ 79,131,049
Non-Residential	\$ 13,957,912	\$ 28,444,539	\$ 42,402,451
Mixed-Use	\$ -	\$ -	\$ -
<b>Tax Revenue from Developed Land</b>	<b>\$ 93,088,961</b>	<b>\$ 28,444,539</b>	<b>\$ 121,533,500</b>
Vacant Residential	\$ 1,357,704	\$ -	\$ 1,357,704
Vacant Non-Residential	\$ 1,560,274	\$ -	\$ 1,560,274
Vacant Mixed-Use	\$ 53,191	\$ -	\$ 53,191
Agricultural/Undetermined	\$ 109,317	\$ -	\$ 109,317
<b>Tax Revenue from Undeveloped Land</b>	<b>\$ 3,080,487</b>	<b>\$ -</b>	<b>\$ 3,080,487</b>

Grand Total (city limits only)	Ad Valorem	Sales Tax	Total
	\$ 96,169,448	\$ 28,444,539	\$ 124,613,987



NOTE: In general, land uses that generate tax revenues less than 1% of total revenues are not shown on chart.

1. Mixed-Use land uses reflect those parcels for which zoning allows for residential and/or non-residential horizontal or vertically-integrated uses.  
 2. Agricultural/Undetermined land uses reflect those parcels with agricultural zoning for which no future use is currently defined.  
 3. Properties located in the ETJ are not included in the Land Use Summary and the Tax Base Summary because they fall outside of the city's land use and taxing jurisdiction.  
 4. Institutional (non-taxable) properties are not included in the Tax Base Summary because these properties do not generate taxes. Estimated tax revenues do not include any property exemptions, delinquencies, etc. and; therefore, may not reflect actual collection amounts.

DISCLAIMER: This map and information contained in it were developed exclusively for use by the City of McKinney. Any use or reliance on this map by anyone else is at that party's risk and without liability to the City of McKinney, its officials or employees for any discrepancies, errors or variances which may exist.