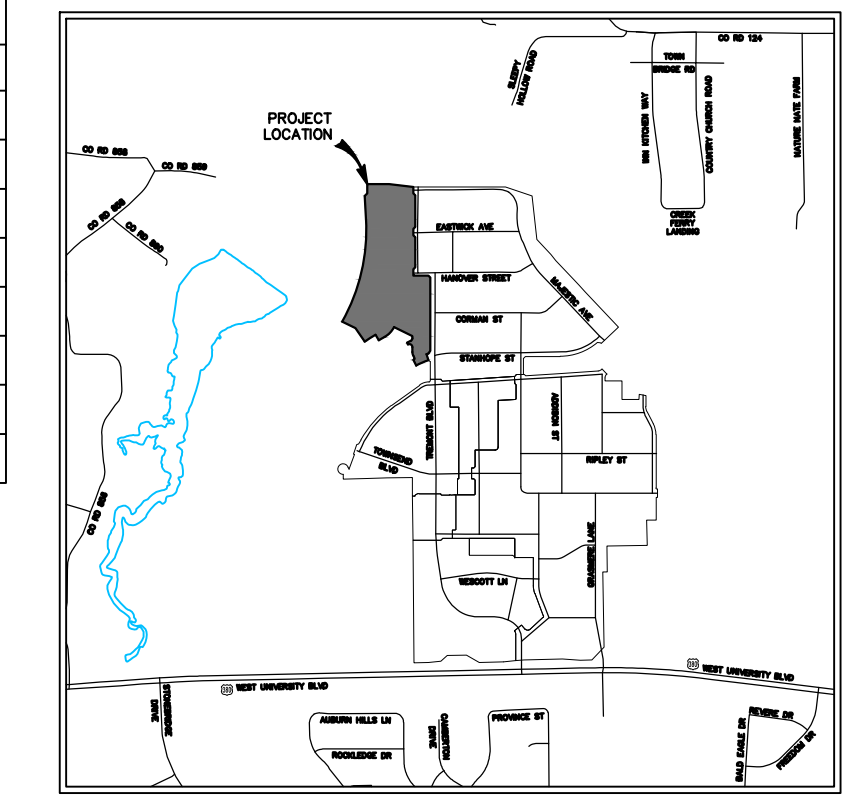


CURVE	DELTA	RADIUS	TANGENT	LENGTH	CHORD
C57	90°00'00"	23.50'	23.50'	36.91'	S45°00'00"W 33.23'
C58	90°00'00"	23.50'	23.50'	36.91'	S45°00'00"E 33.23'
C59	90°00'00"	23.50'	23.50'	36.91'	N45°00'00"E 33.23'
C60	90°00'00"	23.50'	23.50'	36.91'	S45°00'00"E 33.23'

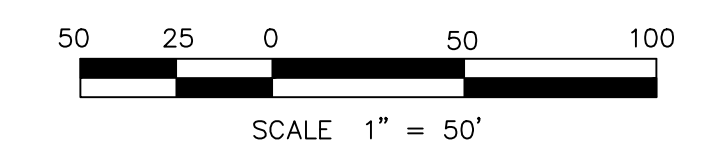
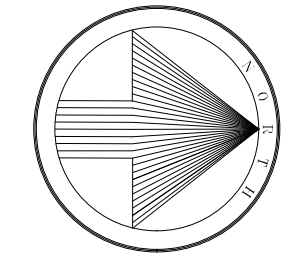
CURVE	DELTA	RADIUS	TANGENT	LENGTH	CHORD
C1	1°30'37"	625.00'	8.24'	16.47'	S72°26'46"W 16.47'
C2	10°20'00"	574.93'	51.99'	103.69'	S66°31'29"W 103.55'
C3	25°56'39"	65.00'	14.97'	29.43'	N12°58'20"W 29.18'
C4	101°40'37"	23.52'	28.88'	41.75'	N53°07'55"W 36.48'
C5	7°52'07"	87.50'	6.02'	12.02'	N79°56'09"E 12.01'
C6	8°35'21.3"	23.50'	21.11'	34.40'	N41°56'06"E 31.41'
C17	31°11'19"	275.00'	76.75'	149.69'	S43°57'08"W 147.85'
C19	3°58'04"	1464.31'	50.72'	101.40'	S57°36'46"W 101.38'
C22	32°36'50"	1240.00'	362.76'	705.83'	N13°06'00"E 696.34'

CURVE	DELTA	RADIUS	TANGENT	LENGTH	CHORD
C43	124°33'22"	46.50'	88.49'	101.09'	S27°47'25"W 82.33'
C44	3°36'16"	1496.50'	47.09'	94.15'	N2°21'29"W 94.13'
C45	4°31'24.3"	32.50'	12.87'	24.51'	S22°09'42"E 23.93'
C46	59°32'48"	250.00'	143.02'	259.82'	N29°46'24"E 248.28'
C47	13°59'54"	80.00'	9.82'	19.55'	S83°00'03"W 19.50'
C48	99°21'51"	50.00'	58.92'	86.71'	S40°19'04"E 76.25'
C49	8°32'51"	1405.00'	104.99'	209.60'	N5°05'26"E 209.40'
C50	89°10'59"	50.00'	49.29'	77.83'	S45°24'30"W 70.20'
C52	25°56'39"	57.50'	13.25'	26.04'	S12°58'20"E 25.81'

CURVE	DELTA	RADIUS	TANGENT	LENGTH	CHORD
C53	10°19'56"	600.00'	54.25'	108.20'	S66°31'30"W 108.05'
C62	32°36'50"	1300.00'	380.32'	739.98'	N13°06'00"E 730.03'
C64	7°15'09"	300.00'	19.01'	37.97'	S86°22'25"E 37.95'
C66	0°45'21"	625.00'	4.12'	8.24'	N61°44'12"E 8.24'
C67	179°59'56"	5.00'	49404.11'	15.71'	S0°00'02"W 10.00'
C68	3°30'12"	300.00'	9.17'	18.34'	N88°14'54"W 18.34'
C69	7°15'09"	267.50'	16.95'	33.86'	N86°22'25"W 33.84'



VICINITY MAP
1" = 1,500'



- LEGEND
- 1/2" IRON ROD FOUND
 - 1/2" IRON ROD SET
 - <CM> CONTROL MONUMENT
 - O.P.R.C.C.T. OFFICIAL PUBLIC RECORDS, DENTON COUNTY, TEXAS
 - ◆ DENOTES STREET NAME CHANGE
 - UE UTILITY EASEMENT
 - WLE WATER LINE EASEMENT
 - DE DRAINAGE EASEMENT
 - BL BUILDING LINE

SETBACK EXHIBIT

TUCKER HILL PHASE FIVE

57 SINGLE-FAMILY RESIDENTIAL LOTS AND 3 COMMON AREAS
 BEING 16.241 ACRES LOCATED IN THE GEORGE W CRUTCHFIELD SURVEY - ABSTRACT NO 204 & THE MERIDAY ASHLOCK SURVEY - ABSTRACT NO 20 AN ADDITION IN THE CITY OF MCKINNEY, COLLIN COUNTY, TEXAS

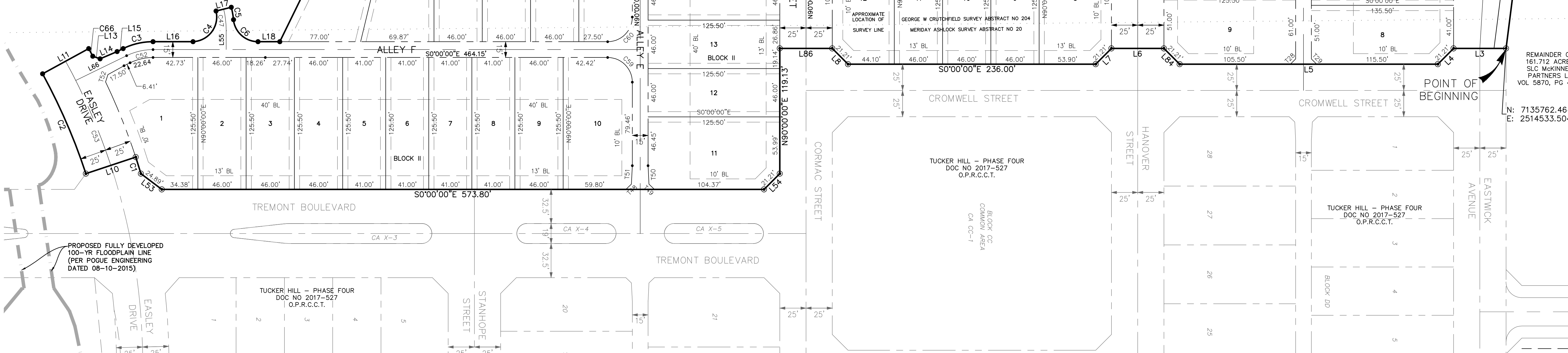
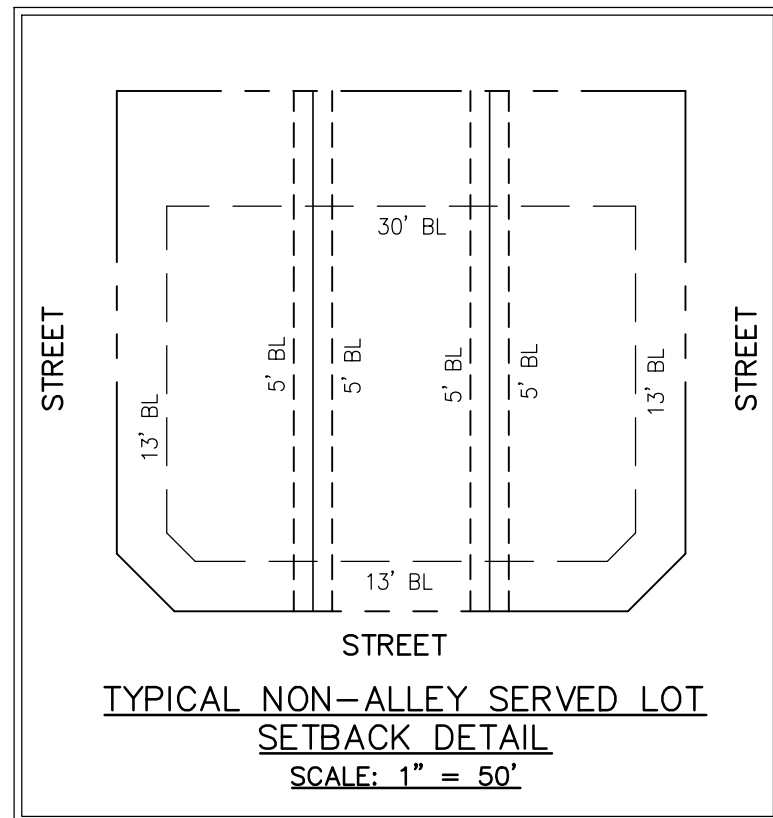
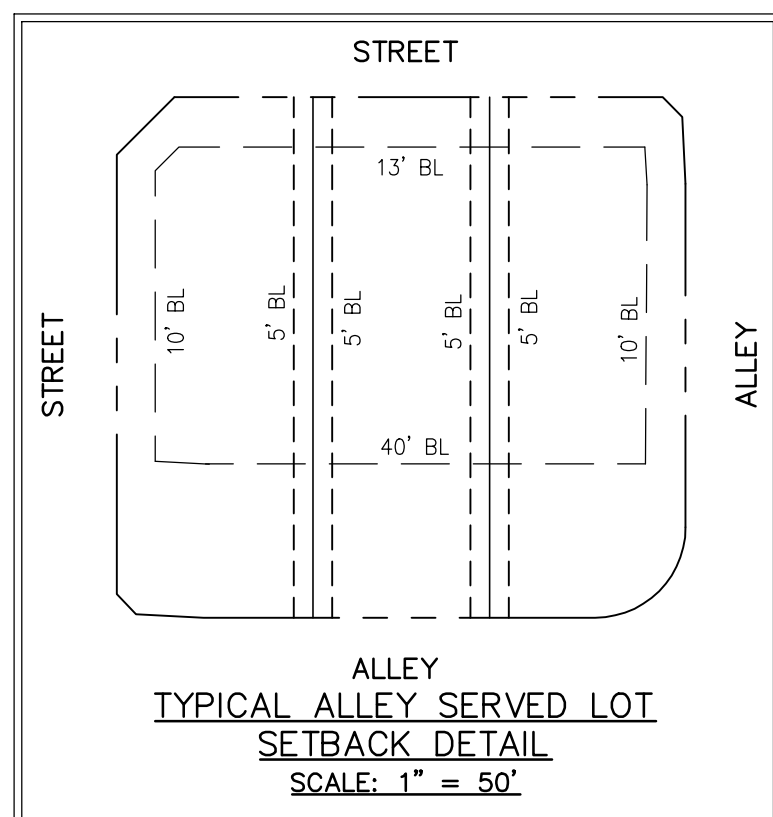
Date: May 29, 2018

SHEET 1 OF 1

FOR REVIEW PURPOSES ONLY
 THIS DOCUMENT SHALL NOT BE RECORDED FOR ANY PURPOSE

ENGINEER/SURVEYOR:
J. VOLK CONSULTING, INC.
 830 CENTRAL PARKWAY EAST, SUITE 300
 PLANO, TX 75074
 972-201-3100
 RYAN.REYNOLDS@JVOLKCONSULTING.COM
 TBPLS FIRM NO. 10194033

OWNER:
SLC MCKINNEY PARTNERS, LP
 1550 WEST MCEWEN DRIVE
 SUITE 200
 FRANKLIN, TN 37067
 972-547-1151



BENCHMARK NO. 1:
 "X" FOUND IN CONCRETE AT THE CENTERLINE INTERSECTION OF TOWNSEND BOULEVARD AND PEARL STREET
 ELEVATION = 652.00'

BENCHMARK NO. 2:
 "X" FOUND IN CONCRETE AT THE CENTERLINE INTERSECTION OF CORMAC STREET AND CROMWELL STREET
 ELEVATION = 624.08'

BENCHMARK NO. 3:
 "X" FOUND IN CONCRETE AT THE CENTERLINE INTERSECTION OF MAJESTIC AVENUE AND HANOVER STREET
 ELEVATION = 614.34'

BENCHMARK NO. 4:
 "X" FOUND IN CONCRETE AT THE CENTERLINE INTERSECTION OF STANHOPE STREET AND TREMONT BOULEVARD
 ELEVATION = 624.77'

LINE	BEARING	LENGTH	LINE	BEARING	LENGTH	LINE	BEARING	LENGTH	LINE	BEARING	LENGTH	LINE	BEARING	LENGTH	LINE	BEARING	LENGTH
L1	N90°00'00"E	148.22'	L13	S19°38'24"W	7.37'	L55	N90°00'00"W	19.15'	T30	N46°25'52"E	7.25'	T45	S44°59'06"E	20.99'	T57	N43°23'48"E	27.48'
L3	S0°00'00"E	50.00'	L14	N23°04'54"W	17.69'	L65	N43°46'03"W	29.90'	T31	S46°25'52"E	7.25'	T58	S38°15'05"E	18.60'	T59	N88°17'20"W	17.72'
L4	S45°00'00"E	21.21'	L15	N25°56'39"W	6.41'	L66	S25°54'41"E	53.92'	T32	S2°51'45"E	17.57'	T47	N45°00'54"E	6.89'	T60	S12°50'20"W	19.98'
L5	S0°00'00"E	246.00'	L16	N0°00'00"W	38.13'	L79	S46°36'12"E	29.06'	T33	N2°51'45"E	17.57'	T48	S43°34'08"E	7.25'	T62	N47°46'52"E	7.41'
L6	S0°00'00"E	50.00'	L17	N13°59'54"W	15.00'	L84	S45°00'00"W	21.21'	T35	N46°25'52"E	7.25'	T62	N47°46'52"E	7.41'	T63	N42°37'15"W	6.77'
L7	S45°00'00"E	21.21'	L18	N0°00'00"W	20.74'	L86	S0°00'00"E	50.00'	T36	N2°51'45"W	17.57'	T50	S87°08'15"W	17.57'	T64	S11°7'47"E	7.37'
L8	S45°00'00"W	21.21'	L19	N30°27'12"W	50.00'	T27	N41°52'18"W	12.86'	T37	S2°51'45"W	17.57'	T51	S87°08'15"E	17.57'	T67	S45°02'03"W	21.20'
L10	S18°18'32"E	50.00'	L53	S37°03'12"W	24.89'	T28	S45°00'00"E	7.07'	T38	S46°25'52"W	7.25'	T52	N72°12'37"W	7.27'	T69	S82°46'36"E	30.82'
L11	N28°38'29"W	50.00'	L54	S45°00'00"E	21.21'	T29	S45°00'00"W	7.07'	T44	N45°00'54"E	21.03'	T56	N83°50'57"W	7.65'			