

GABE NESBITT PARK MASTER PLAN UPDATE FINAL MASTER PLAN

PARKS, RECREATION AND OPEN SPACE ADVISORY BOARD
10.08.2015



PURPOSE

PROJECT HISTORY

PRELIMINARY DESIGNS

FINAL MASTER PLAN

INPUT AND QUESTIONS

NEXT STEPS

PURPOSE

Gabe Nesbitt Park Master Plan Development

Provide a process for allowing public input to determine best use of valuable parkland, maximize the benefit of the development, and create an overall park design that is cohesive and respectful of others.



PURPOSE

PROJECT HISTORY

PRELIMINARY DESIGNS

FINAL MASTER PLAN

INPUT AND QUESTIONS

NEXT STEPS

UPCOMING DATES

- **October 8th** – Master Plan presentation to the Parks, Recreation Advisory Board for recommendation of approval to Council
- **October 20th** – Council approval Master Plan recommendation of approval to the City Council

PURPOSE

PROJECT HISTORY

PREVIOUS STEPS

FINAL MASTER PLAN

INPUT AND QUESTIONS

NEXT STEPS

PREVIOUS STEPS

SITE ANALYSIS

PRELIMINARY CONCEPTS

PUBLIC INPUT



OPTION 1- ACTIVITY

OPTION 2- UNIQUE BY NATURE

OPTION 3- QUALITY OF LIFE



PRELIMINARY MASTER PLAN 1: ACTIVITY



PRELIMINARY MASTER PLAN 2: UNIQUE BY NATURE



PRELIMINARY MASTER PLAN 3: QUALITY OF LIFE

SUMMARY

OPEN SPACE, SOCCER, JOGGING, AND POND

MORE PLAYGROUNDS AND RESTROOMS

FLEXIBLE EVENT SPACE FOR SPORTS PRACTICE

MORE TENNIS COURTS

BUFFER RESIDENCES FROM COURTS AND ROADS

WAYFINDING



PURPOSE

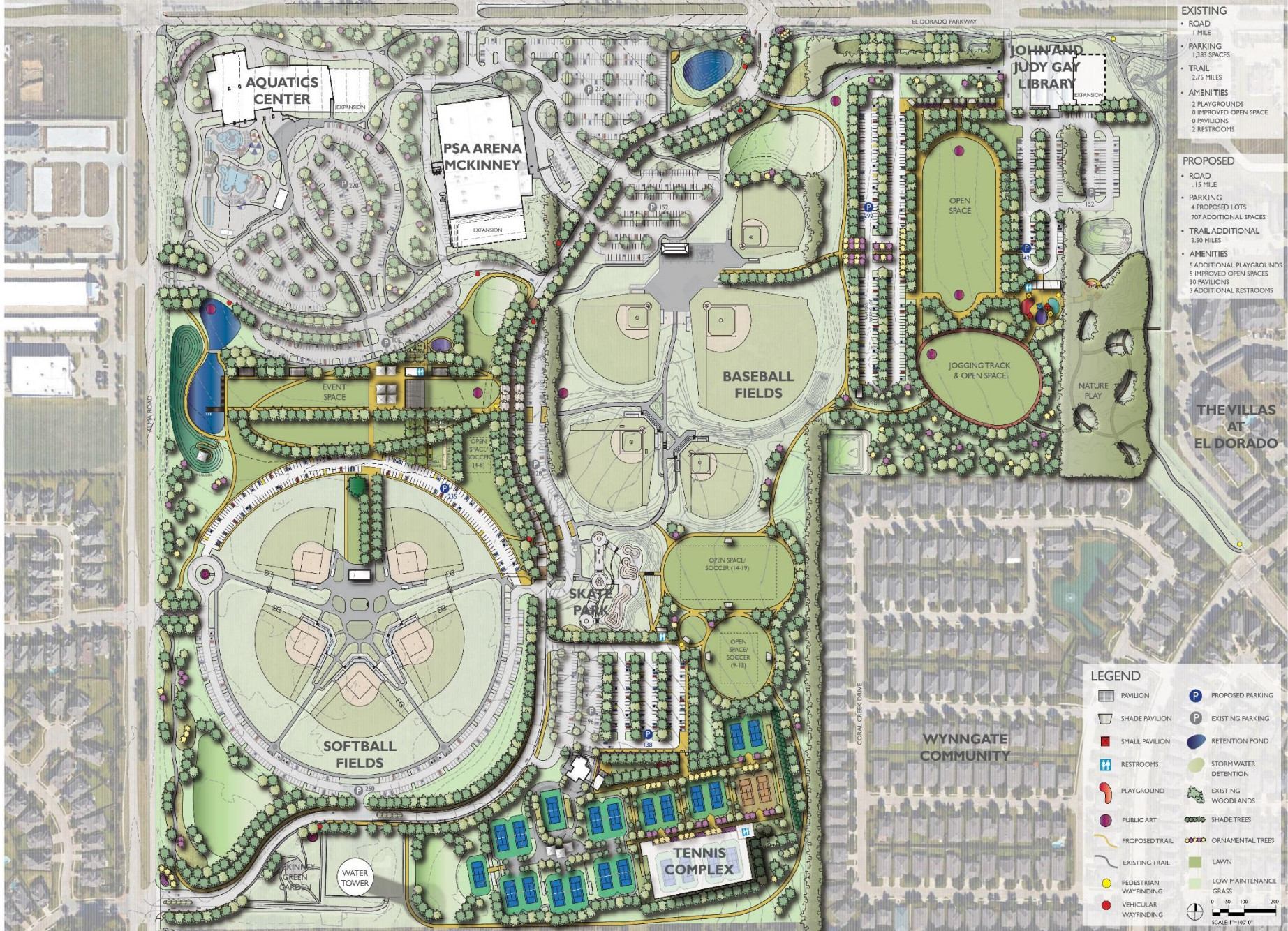
PROJECT HISTORY

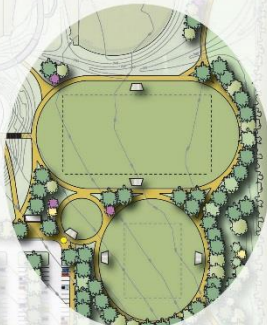
PRELIMINARY DESIGNS

FINAL MASTER PLAN

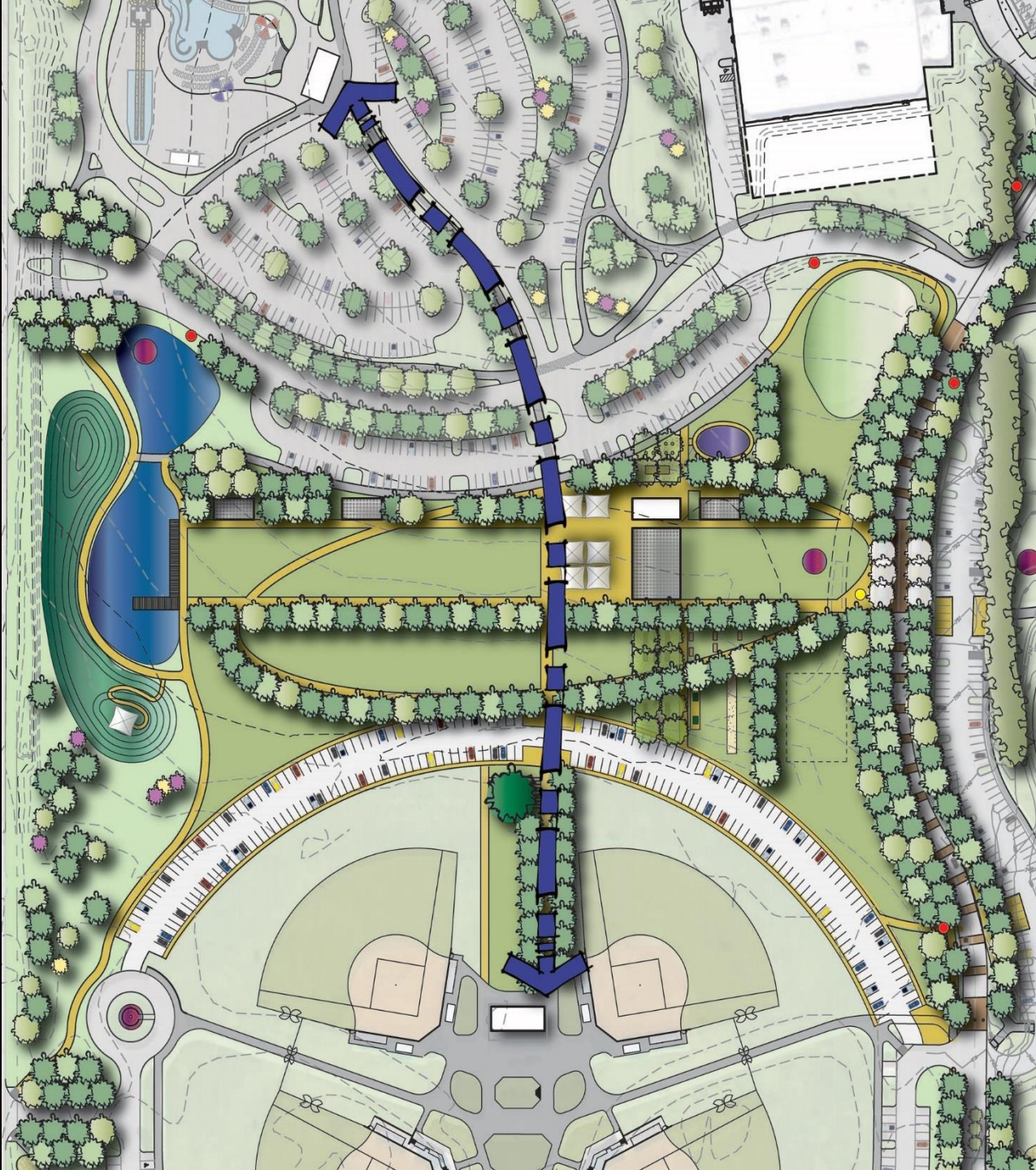
INPUT AND QUESTIONS

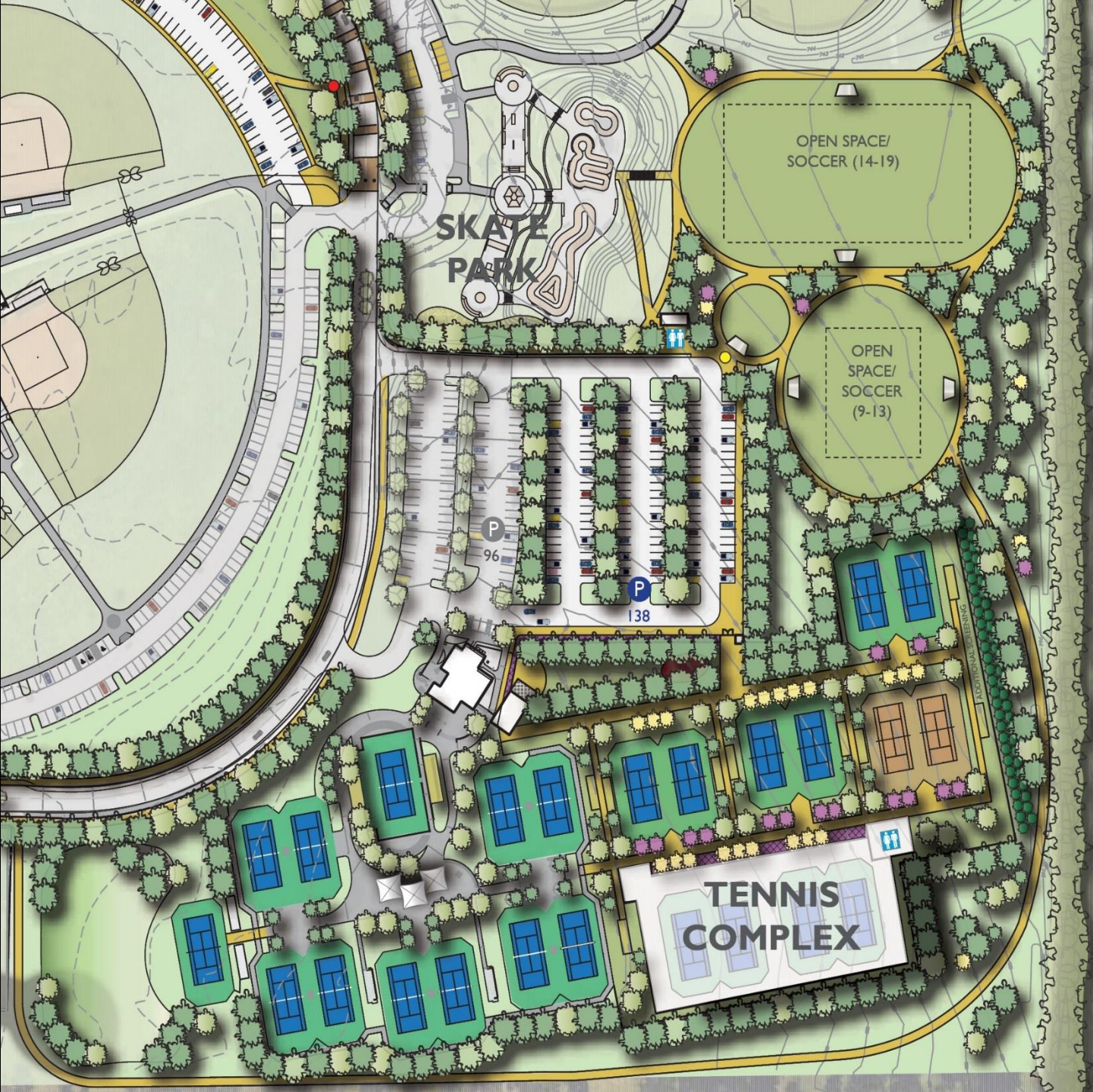
NEXT STEPS











SKATE
PARK

OPEN SPACE/
SOCCER (14-19)

OPEN
SPACE/
SOCCER
(9-13)

P
96

P
138

TENNIS
COMPLEX

TOOTHBRUSH CENTER

JOHN AND JUDY GAY LIBRARY

EXPANSION

OPEN SPACE

JOGGING TRACK & OPEN SPACE

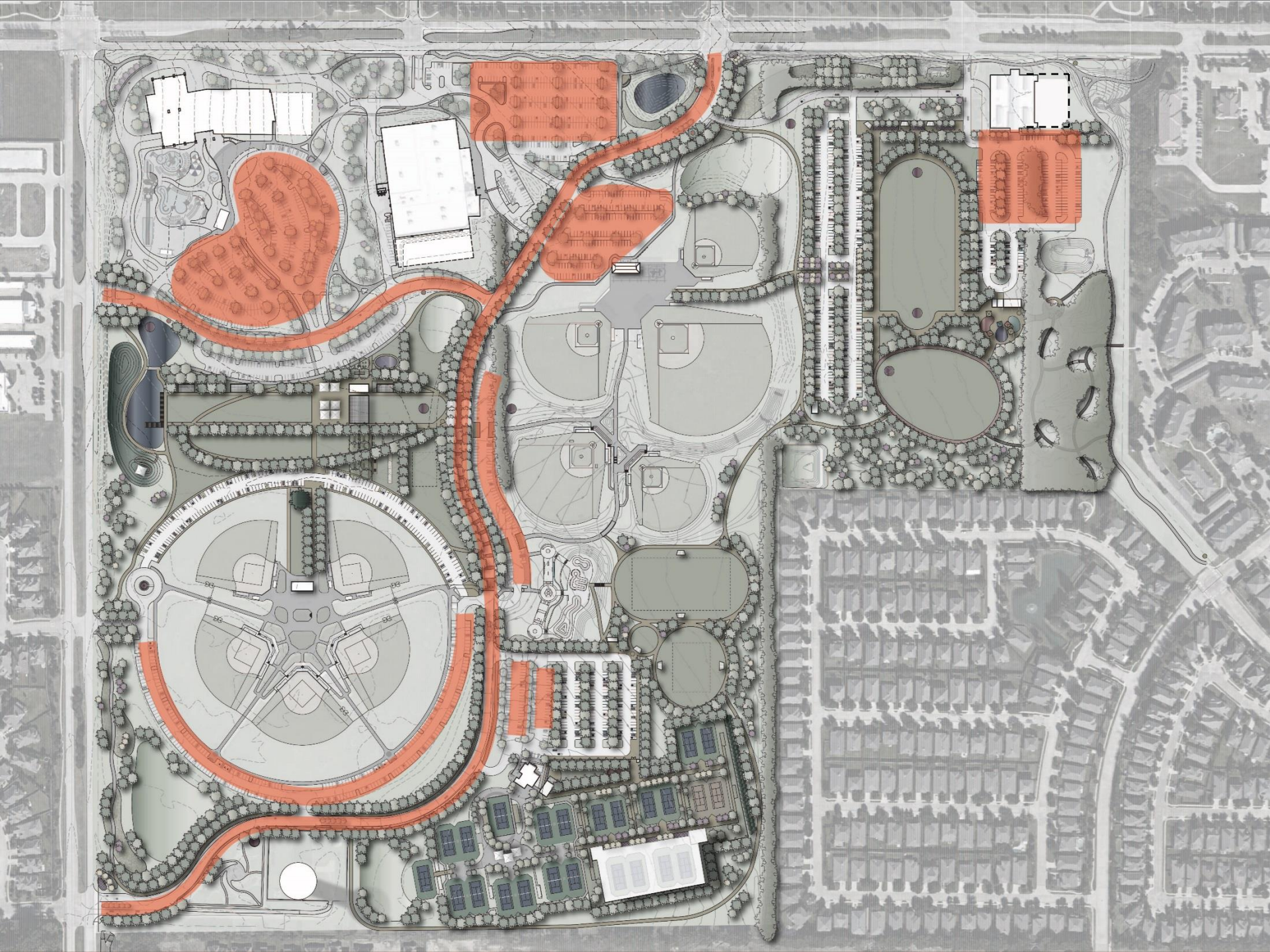
NATURE PLAY

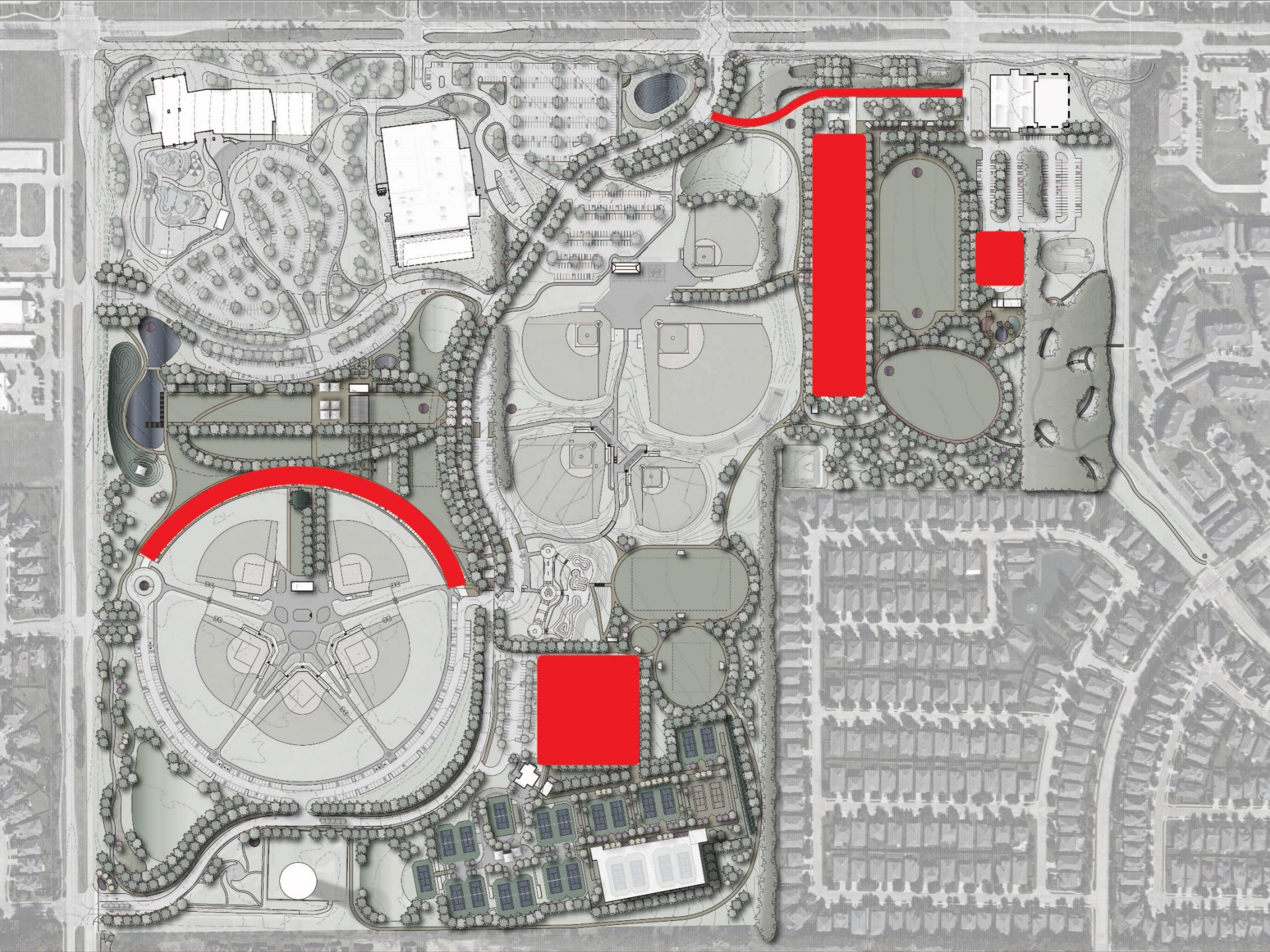
P 292

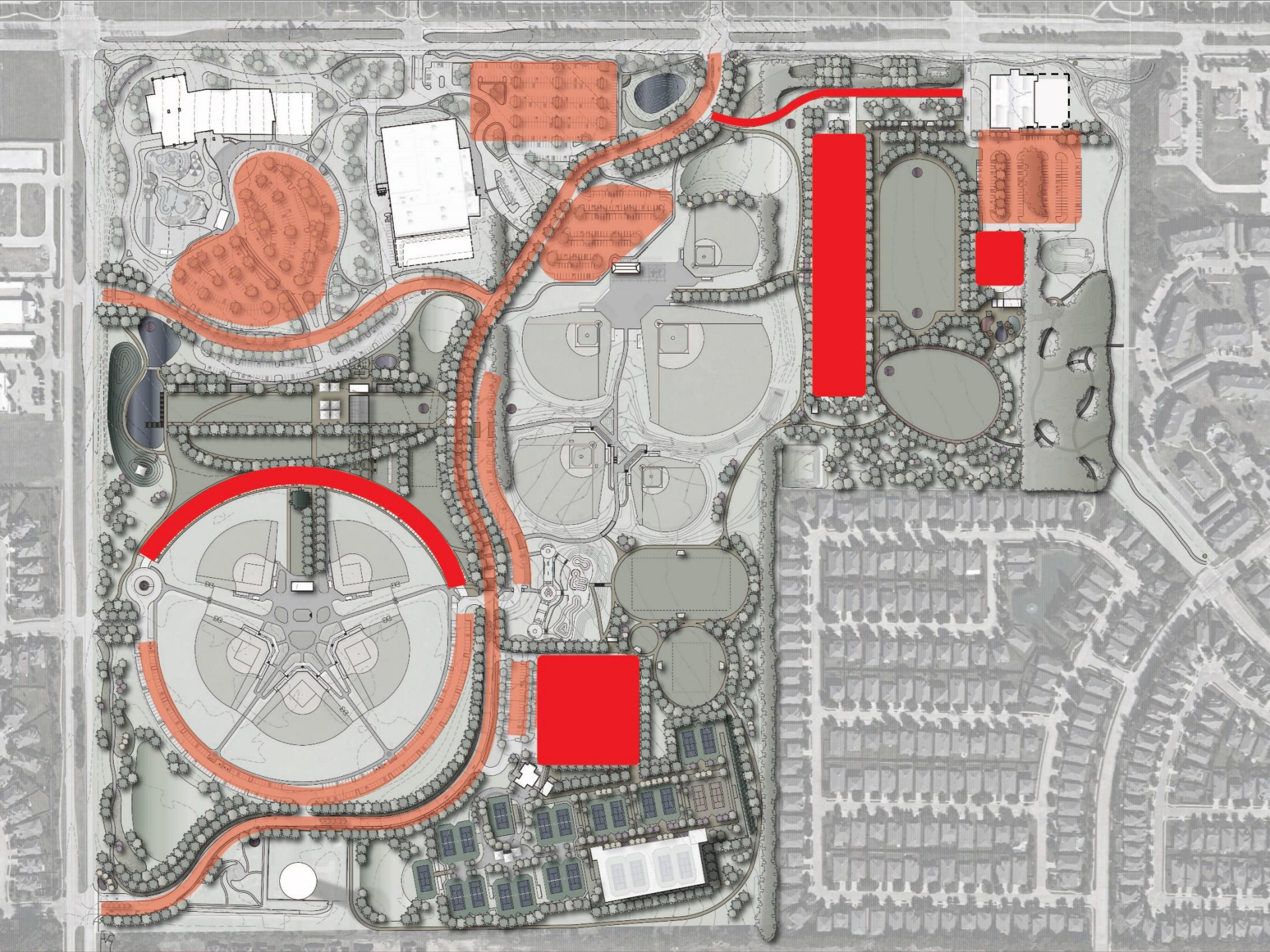
P 42

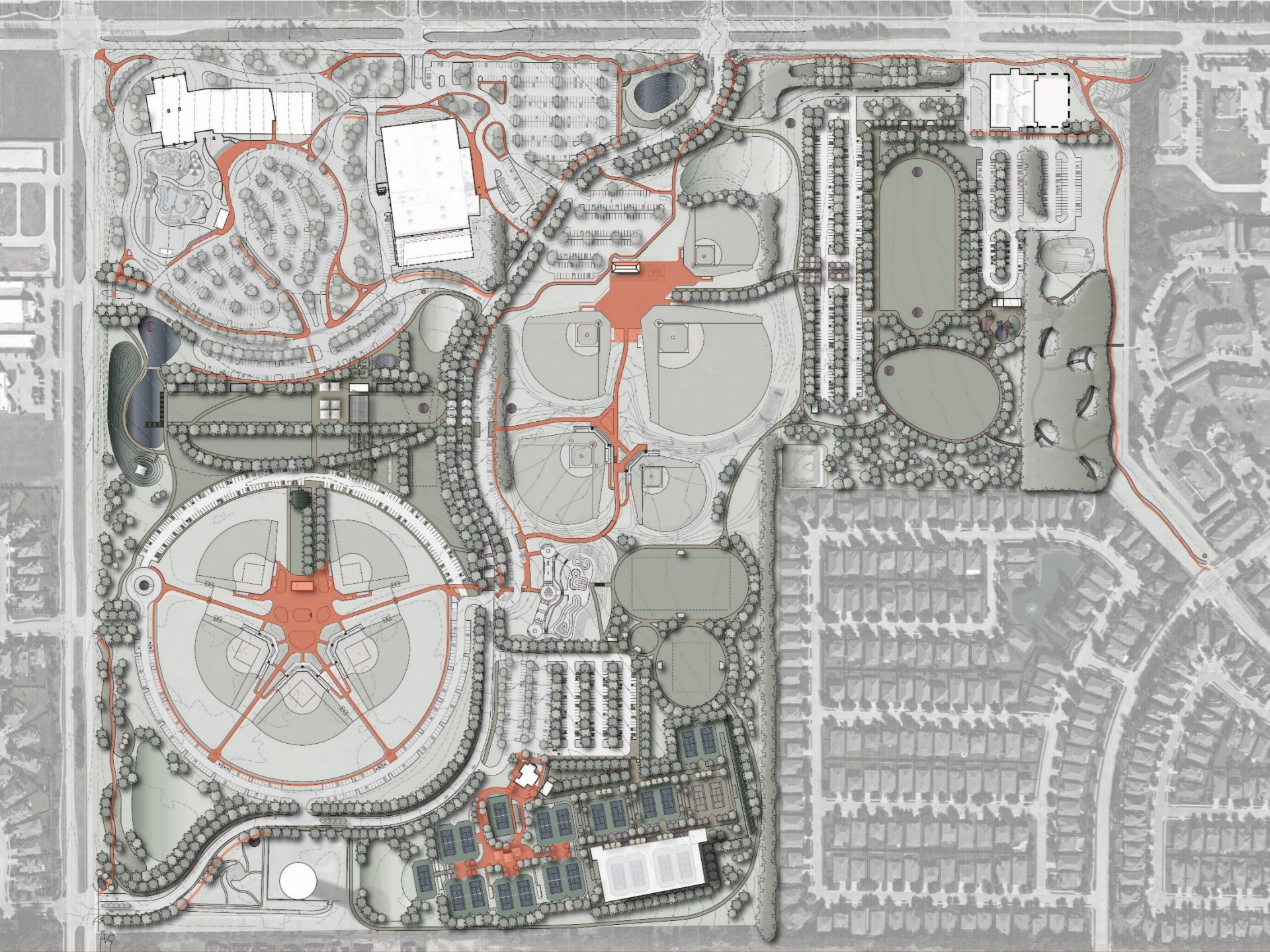
P 152

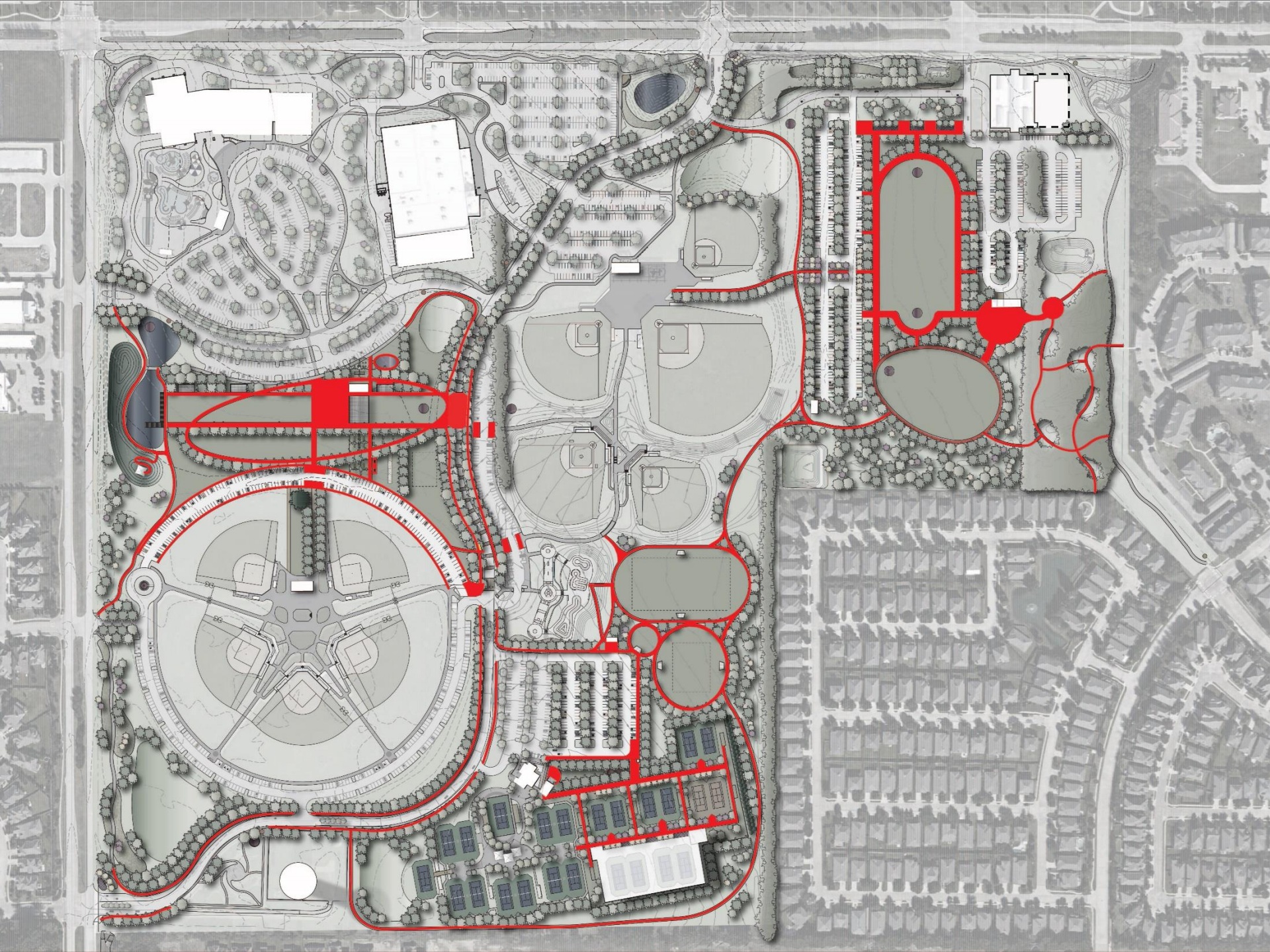


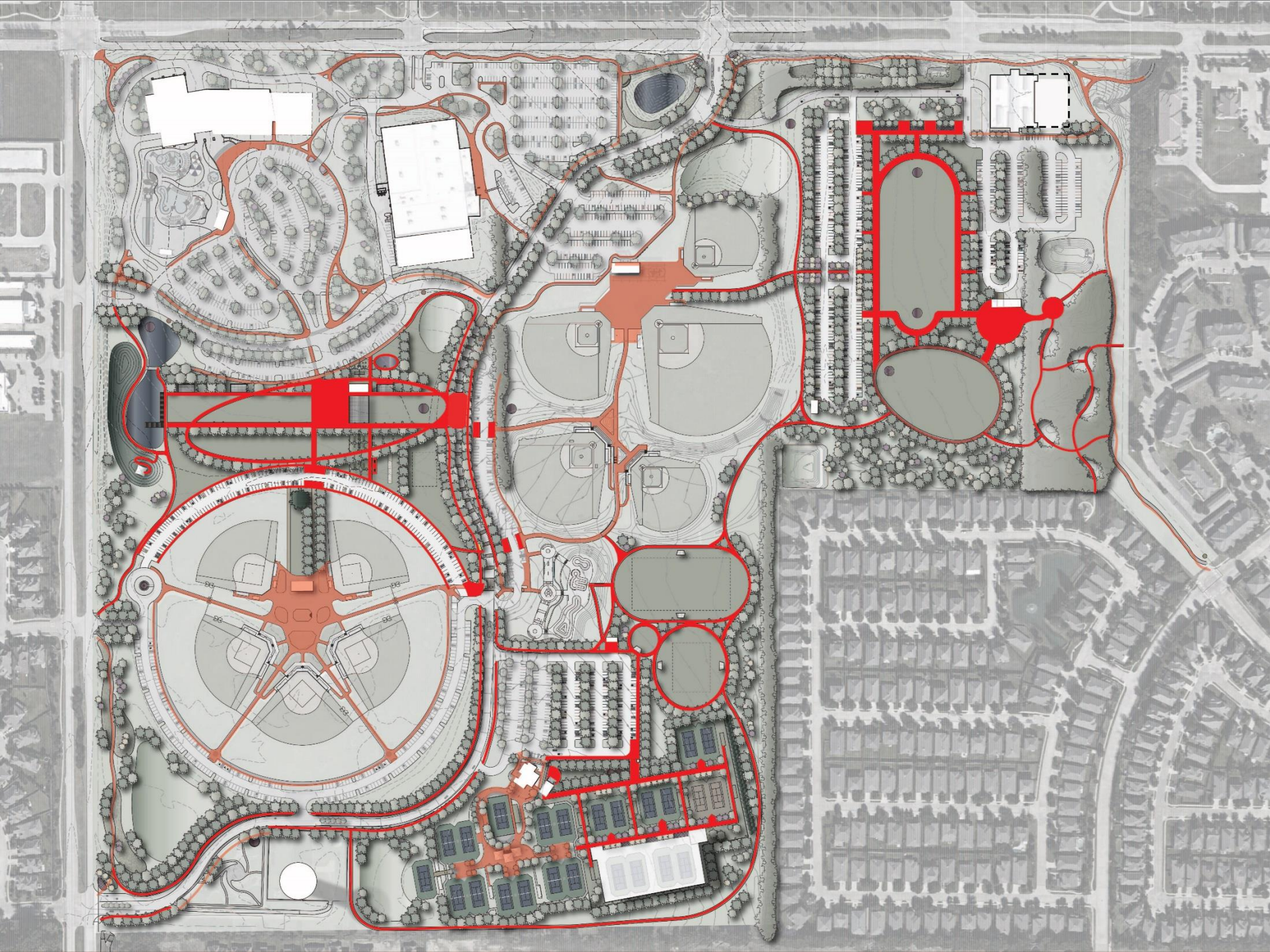










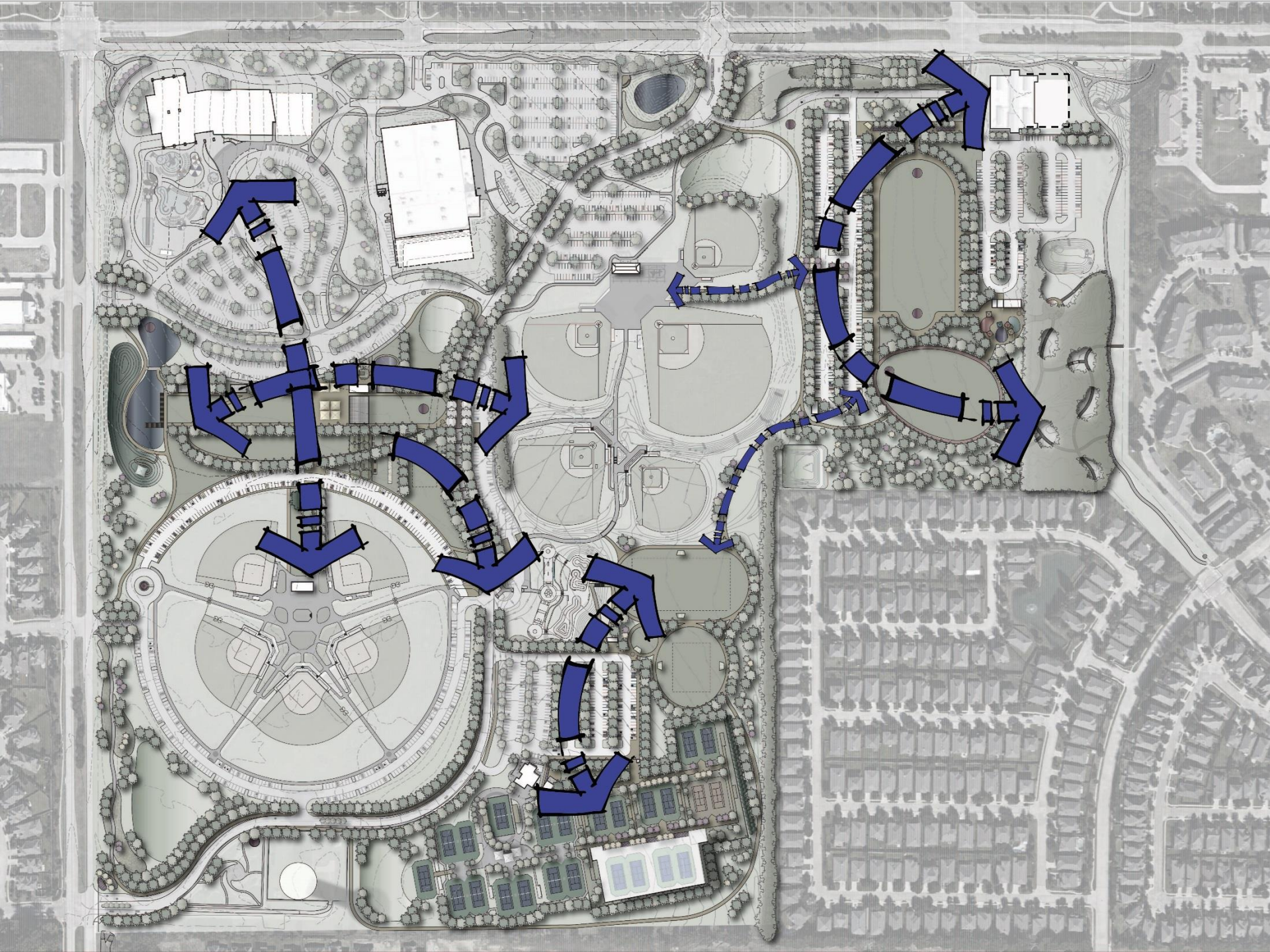


SUMMARY (EXISTING)

- ROAD
1 mile
- PARKING
1,383 spaces
- TRAIL
2.75 miles
- AMENITIES
2 playgrounds
0 improved open space
0 pavilions
2 restrooms

SUMMARY (PROPOSED)

- ROAD
.15 mi. additional
- PARKING
5 proposed lots
700 additional spaces
- TRAIL
3.50 additional miles
- NEW AMENITIES
5 additional playgrounds
5 improved open space
30 additional pavilions
3 additional restrooms



PURPOSE

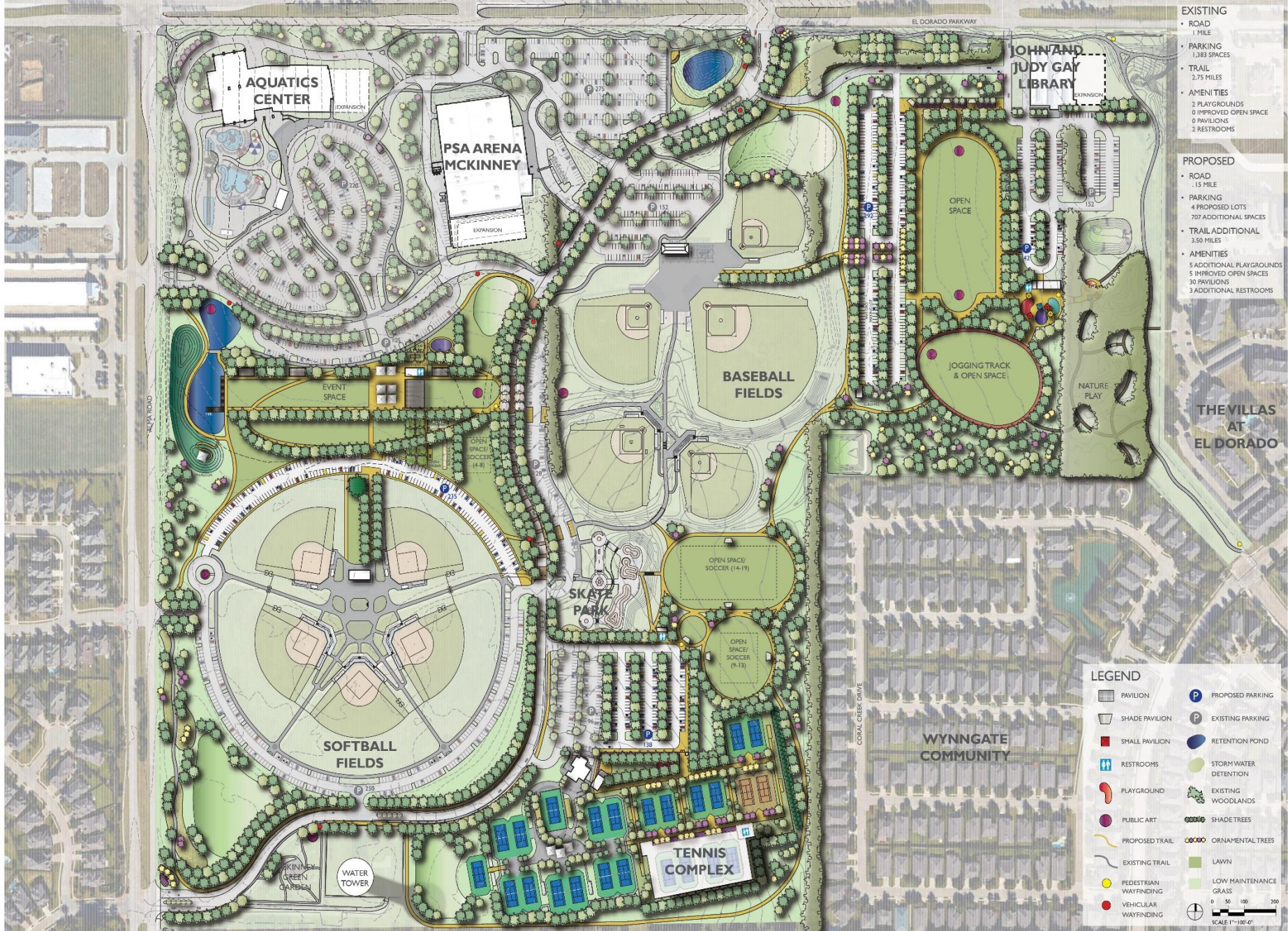
PROJECT HISTORY

PRELIMINARY DESIGNS

FINAL MASTER PLAN

INPUT AND QUESTIONS

NEXT STEPS



PURPOSE

PROJECT HISTORY

PRELIMINARY DESIGNS

FINAL MASTER PLAN

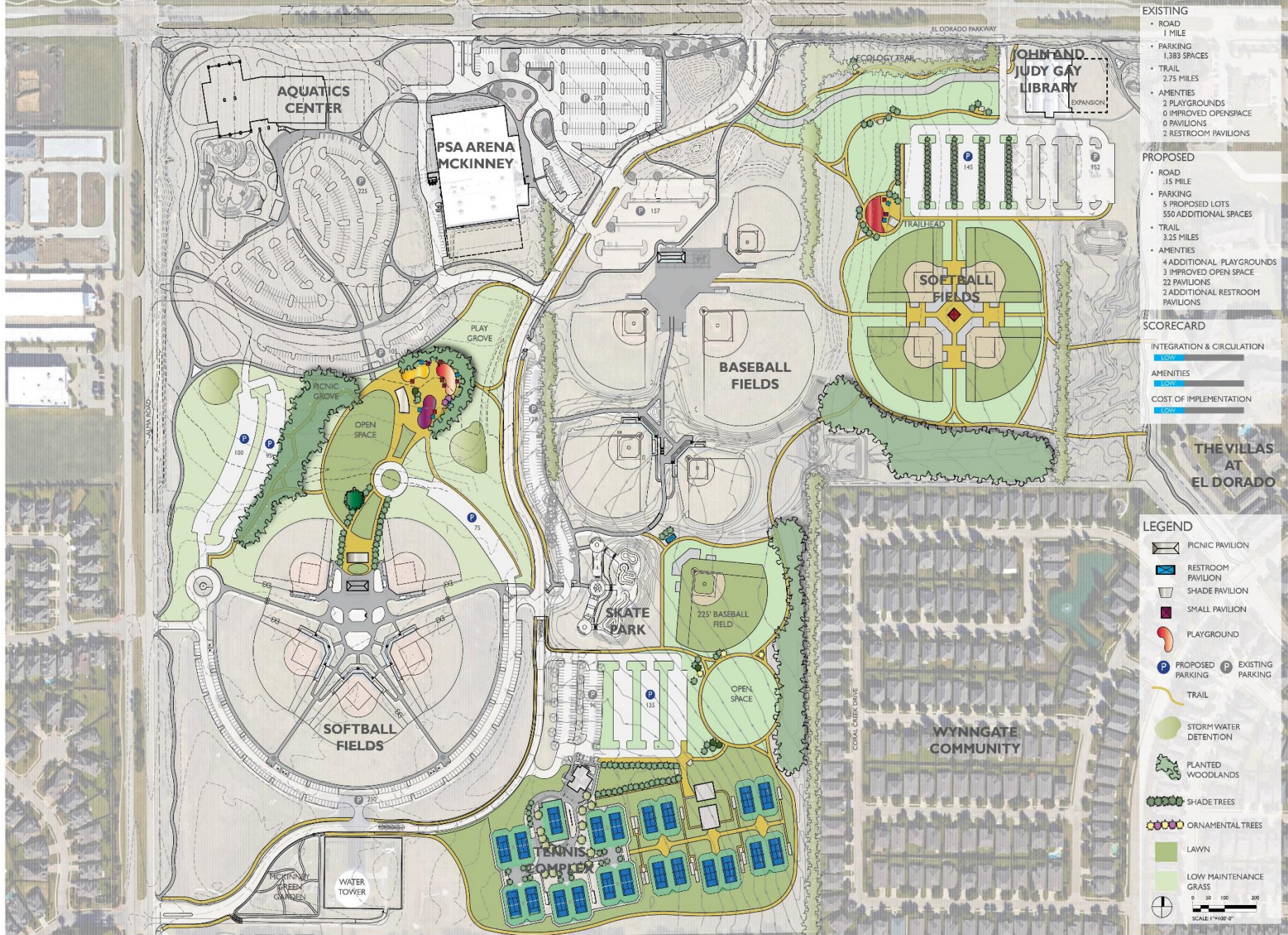
INPUT AND QUESTIONS

NEXT STEPS

UPCOMING DATES

- **October 8th** – Master Plan presentation to the Parks, Recreation Advisory Board for recommendation of approval to Council
- **October 20th** – Council approval Master Plan recommendation of approval to the City Council

RECAP OF CONCEPTS PRESENTED PREVIOUSLY
(FOR Q&A PURPOSES)



EXISTING

- ROAD 1 MILE
- PARKING 1,383 SPACES
- TRAIL 2.75 MILES
- AMENITIES
 - 2 PLAYGROUNDS
 - 0 IMPROVED OPENSACE
 - 0 PAVILIONS
 - 2 RESTROOM PAVILIONS

PROPOSED

- ROAD .15 MILE
- PARKING 5 PROPOSED LOTS 550 ADDITIONAL SPACES
- TRAIL 3.25 MILES
- AMENITIES
 - 4 ADDITIONAL PLAYGROUNDS
 - 3 IMPROVED OPEN SPACE
 - 22 PAVILIONS
 - 2 ADDITIONAL RESTROOM PAVILIONS

SCORECARD

INTEGRATION & CIRCULATION
 LOW

AMENITIES
 LOW

COST OF IMPLEMENTATION
 LOW

THE VILLAS AT EL DORADO

LEGEND

- PICNIC PAVILION
- RESTROOM PAVILION
- SHADE PAVILION
- SMALL PAVILION
- PLAYGROUND
- PROPOSED PARKING
- EXISTING PARKING
- TRAIL
- STORM WATER DETENTION
- PLANTED WOODLANDS
- SHADE TREES
- ORNAMENTAL TREES
- LAWN
- LOW MAINTENANCE GRASS

0 50 100 200
 SCALE 1"=100'-0"



- EXISTING**
- ROAD 1 MILE
 - PARKING 1,383 SPACES
 - TRAIL 2.75 MILES
 - AMENITIES 2 PLAYGROUNDS
0 IMPROVED OPEN SPACE
0 PAVILIONS
2 RESTROOM PAVILIONS

- PROPOSED**
- ROAD .85 MILE
 - PARKING 4 PROPOSED LOTS
557 ADDITIONAL SPACES
 - TRAIL 3.50 MILES
 - AMENITIES 5 ADDITIONAL PLAYGROUNDS
3 IMPROVED OPEN SPACE
12 PAVILIONS
3 ADDITIONAL RESTROOM PAVILIONS

SCORECARD

INTEGRATION & CIRCULATION ■ HIGH

AMENITIES ■ MEDIUM

COST OF IMPLEMENTATION ■ HIGH

THE VILLAS AT EL DORADO

LEGEND

- PICNIC PAVILION
- RESTROOM PAVILION
- SHADE PAVILION
- SMALL PAVILION
- PLAYGROUND
- PUBLIC ART
- PROPOSED PARKING P EXISTING PARKING
- TRAIL
- STORM WATER DETENTION
- PLANTED WOODLANDS
- SHADE TREES
- ORNAMENTAL TREES
- LAWN
- LOW MAINTENANCE GRASS

0 50 100 200
SCALE: 1"=100'-0"



EXISTING	
ROAD	1 MILE
PARKING	1,383 SPACES
TRAIL	2.75 MILES
AMENITIES	2 PLAYGROUNDS 0 IMPROVED OPEN SPACE 0 PAVILIONS 2 RESTROOM PAVILIONS
PROPOSED	
ROAD	50 MILE
PARKING	7 PROPOSED LOTS 502 ADDITIONAL SPACES
TRAIL	3.50 MILES
AMENITIES	1 ADDITIONAL PLAYGROUND 4 IMPROVED OPEN SPACE 11 PAVILIONS 2 ADDITIONAL RESTROOM PAVILIONS
SCORECARD	
INTEGRATION & CIRCULATION	HIGH
AMENITIES	HIGH
COST OF IMPLEMENTATION	MEDIUM

THE VILLAS AT EL DORADO

LEGEND	
	PICNIC PAVILION
	RESTROOM PAVILION
	SHADE PAVILION
	SMALL PAVILION
	PLAYGROUND
	PUBLIC ART
	PROPOSED PARKING
	EXISTING PARKING
	TRAIL
	STORMWATER DETENTION
	PLANTED WOODLANDS
	SHADE TREES
	ORNAMENTAL TREES
	LAWN
	LOW MAINTENANCE GRASS
	SCALE: 1" = 100' 0"