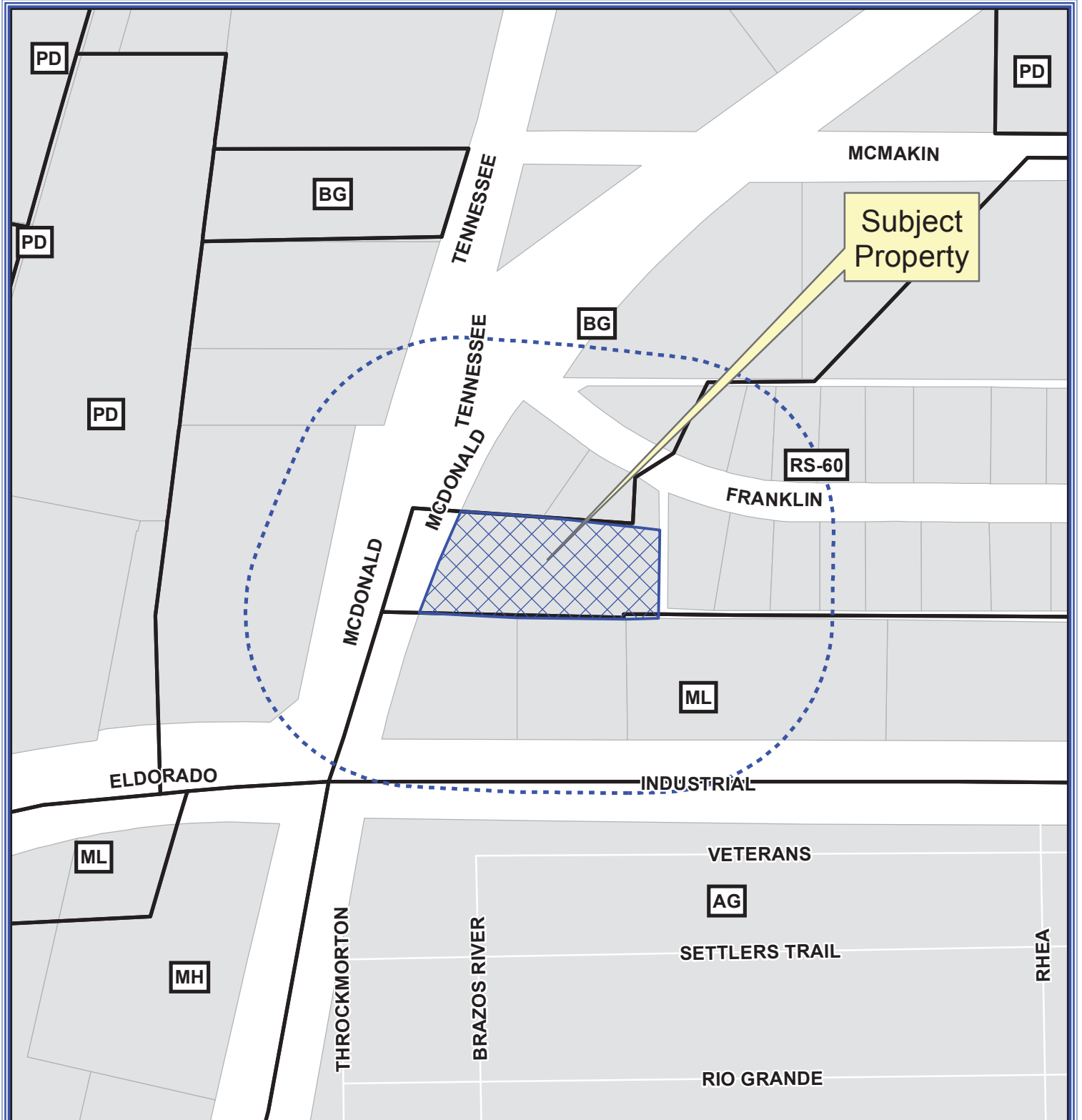


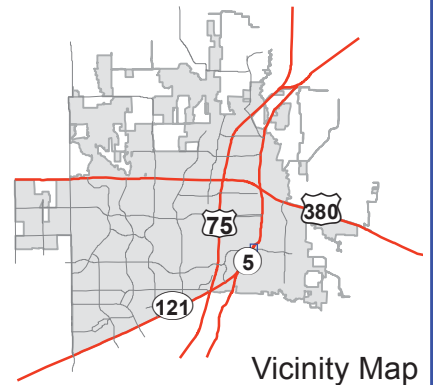
# EXHIBIT A



## Notification Map

Case: 16-310Z

--- 200' Buffer

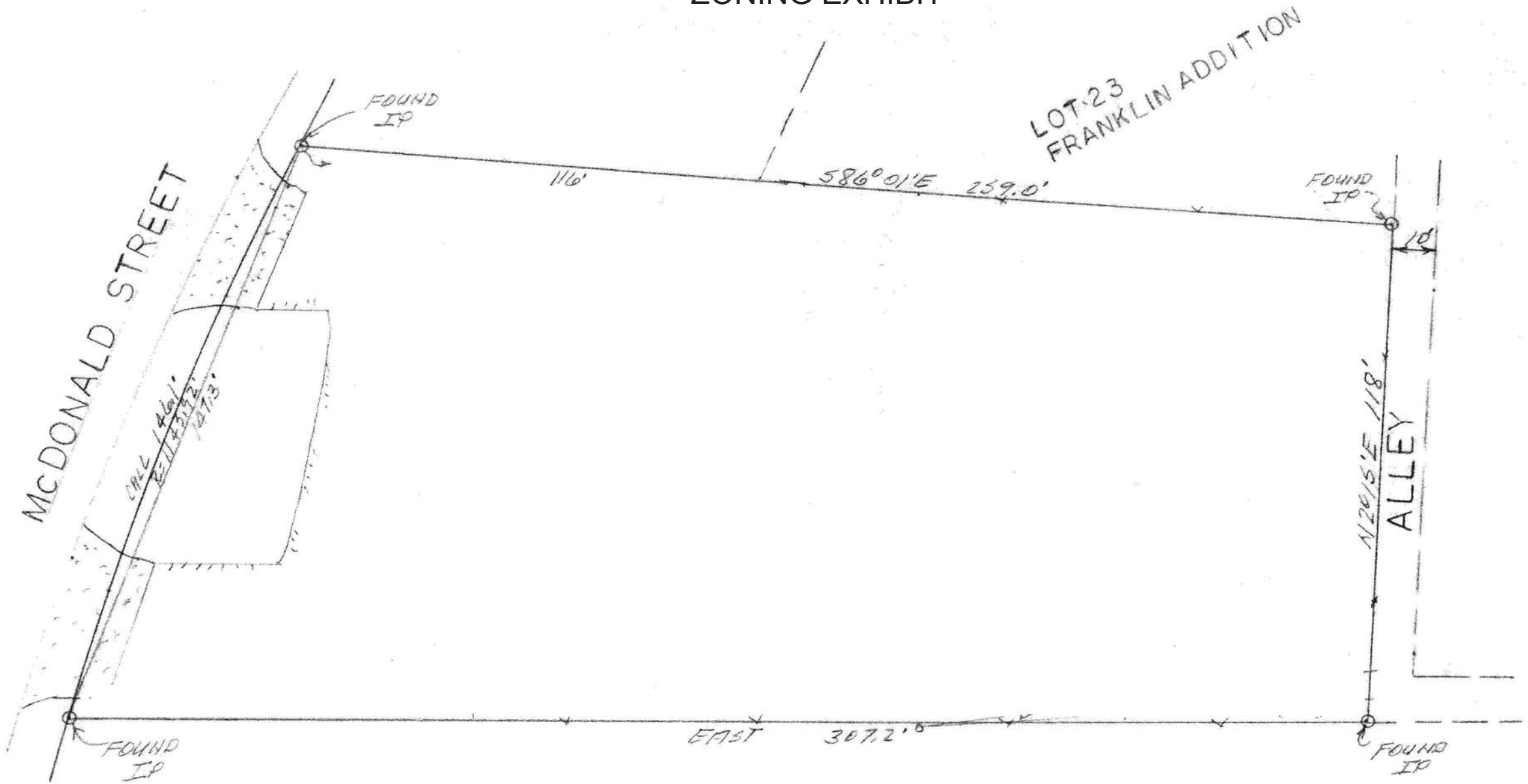


Path: S:\MCKGIS\Notification\Projects\2016\16-310Z.mxd

DISCLAIMER: This map and information contained in it were developed exclusively for use by the City of McKinney. Any use or reliance on this map by anyone else is at that party's risk and without liability to the City of McKinney, its officials or employees for any discrepancies, errors, or variances which may exist.



# ZONING EXHIBIT



**EXHIBIT C**

RECEIVED  
By Planning Department at 8:09 am, Nov 14, 2016

.83 ACRE TRACT  
OUT OF THE  
SAMUEL MCFARLAND SURVEY ABSTRACT NO. 558  
IN THE  
CITY OF MCKINNEY  
COLLIN COUNTY, TEXAS  
OWNER  
ACAPELLA FAMILY  
PARTNERSHIP LTD