

# Case No. 14-134SP

## Parkside at Craig Ranch Phase II





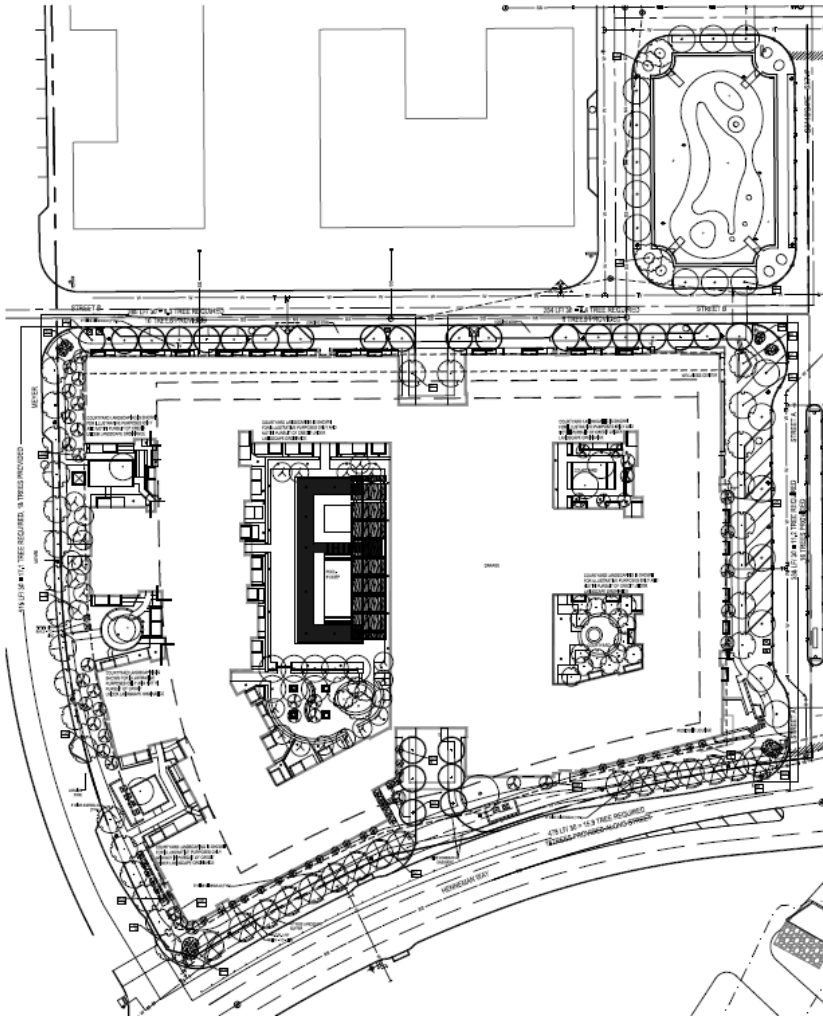
# Aerial Exhibit





# Proposed Landscape Plan

NOTE: ALL LANDSCAPE AREAS SHALL BE PROVIDED WITH AN AUTOMATIC UNDERGROUND IRRIGATION SYSTEM WITH RAIN AND FREEZE SENSORS AND EVAPORATION (ET) WEATHER BASED CONTROLLER AND SAID IRRIGATION SYSTEM SHALL BE DESIGNED BY A QUALIFIED PROFESSIONAL AND INSTALLED BY A LICENSED IRRIGATOR



01 PLANTING PLAN

SCALE: 1 TO 40

### MCKINNEY SITE PLAN SUBMITTAL PLANT SCHEDULE

QTY.	SYM.	SHADE TREES	
16	RO	Red Oak	Quercus shumardii 4" cal.-200 gal. or B+B 12'-14' ht. 6'-8' sp. 7' clear
18	LO	Live Oak	Quercus virginiana 4" cal.-200 gal. or B+B 12'-14' ht. 8'-10' sp. 7' clear
25	CLO	Cathedral Live Oak	Quercus virginiana 'Cathedral' 4" cal.-200 gal. or B+B 12'-14' ht. 8'-10' sp. 7' clear
27	PC	Pond Cypress	Taxodium ascendens 4" cal.-100 gal. or B+B 14'-16' ht. 6'-7' sp. 7' clear
5	SG	Princeton Sentry Glnko	Glnko 'Blloba', Princeton Sentry 4" cal. B+B 12'-14' ht. 5'-6' sp. 7' clear
9	TM	Thornless Mesquite	Prosopis glandulosa 'Thornless' 3" cal.-65 gal or B+B 10'-12' ht. 5'-6' sp.
29	LGM	Little Gem Magnolia	Magnolia 'Little Gem' 3" cal.-65 gal or B+B 10'-12' ht. 4'-5' sp.
52	MCM	Muskogee Crape Myrtle	Lagerstroemia indica 'Muskogee' 4" total cal. multi-trunk- 45 gal. or B+B 12'-14' ht. 8'-10' sp

The Contractor shall verify water restrictions within the City of McKinney at time of planting. Should water restrictions not allow hydromulch, hydroseeding, or sprigging (Stage 3 and Stage 4 water restrictions), an approved alternate for grassing shall be installed

### LANDSCAPE TABULATIONS

SITE DATA:		
SITE AREA:	5.02AC	218,957 SF
LANDSCAPE AREA:	REQUIRED 10% (21,896)	PROVIDED 25,959(11%)
STREETYARD AREA:	19% (32,843)	53,312(27%)
CALIPER INCHES FOR MITIGATION:	REQUIRED 74	PROVIDED 686



2013 Woodbine St.  
Dallas, Texas 75204  
P: 214-247-8220



Parkside at Craig Ranch  
Phase II  
McKinney, Texas  
Site Plan Submittal



Project Number: 19-0105  
Drawn By: BL  
Site Plan Submittal: 5/12/2014

Revision Date  
 ▲ CITY COMMENTS 5-27-14  
 ▲ CITY COMMENTS 6-5-14  
 ▲ CITY COMMENTS 6-15-14  
 ▲

LANDSCAPE PLAN

LP 10.00

