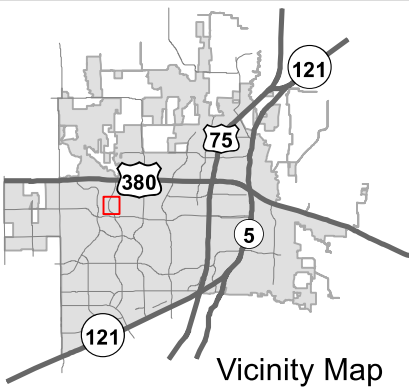
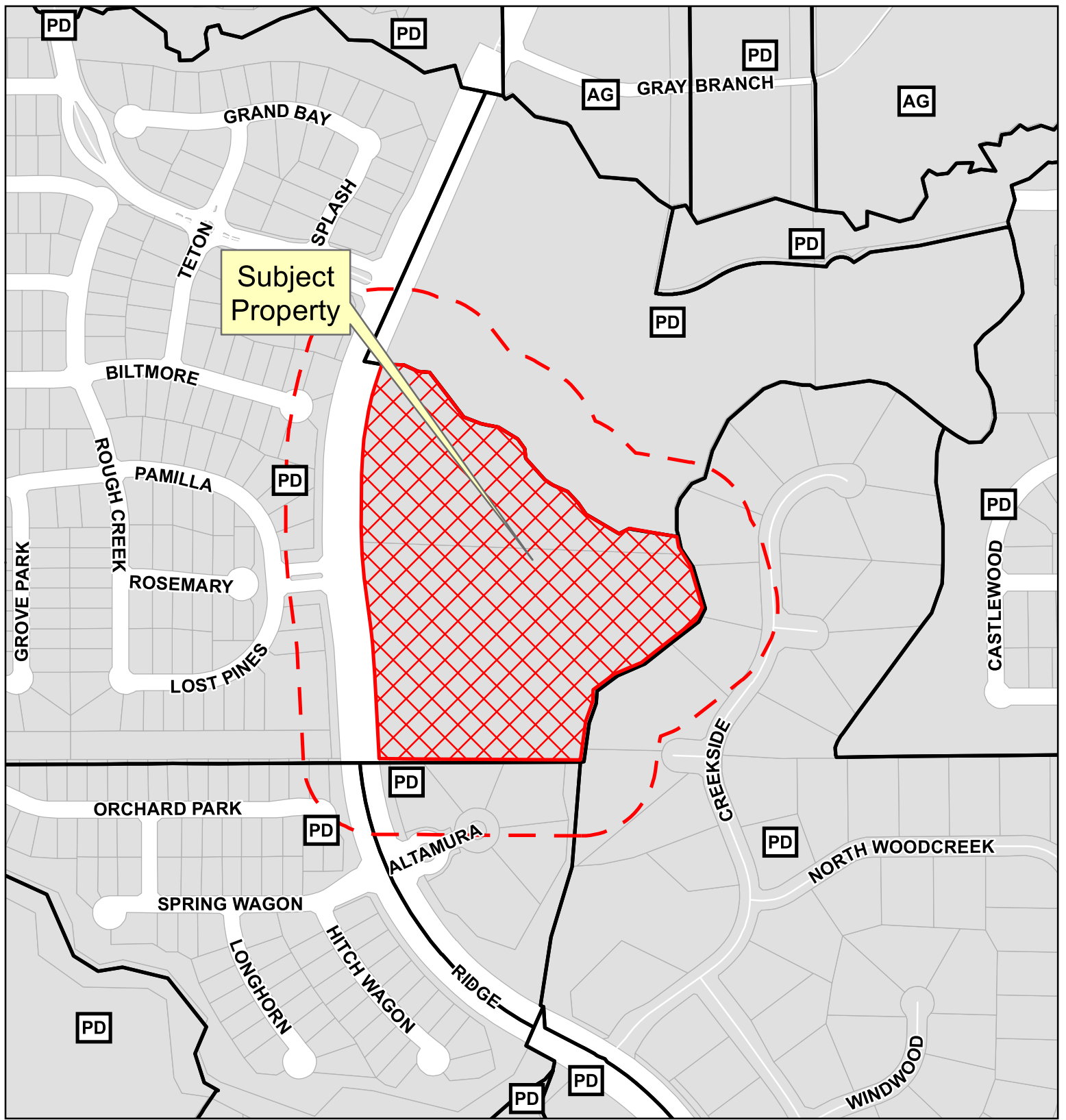


EXHIBIT A



Notification Map

18-0051Z

--- 200' Buffer

Source: City of McKinney GIS
Date: 3/28/2018



0 190 380 Feet
1 in = 391 ft

DISCLAIMER: This map and information contained in it were developed exclusively for use by the City of McKinney. Any use or reliance on this map by anyone else is at that party's risk and without liability to the City of McKinney, its officials or employees for any discrepancies, errors, or variances which may exist.



EXHIBIT B

Tract 1:

BEING a 11.609 acre tract of land situated in the Stanley B. Searcy Survey, Abstract Number 818, City of McKinney, Collin County, Texas, same being a tract of land conveyed to RT INVESTMENTS, LLC by deed recorded in Instrument Number 20120926001215740, Official Public Records, Collin County, Texas, being more particularly described as follows:

BEGINNING at a capped iron rod set in the east right-of-way of Ridge Road (120' R.O.W.), same being the southwest corner of said tract of land, also being the northwest corner of a tract of land conveyed to ALTAMURA ESTATES by deed recorded in Volume 2016, Page 325, Official Public Records, Collin County, Texas;

THENCE North 03 degrees 12 minutes 26 seconds West, along the east line of Ridge Road, for a distance of 295.12 feet, to an "X" Cut Found for the beginning of a curve to the left, having a radius of 1160.00 feet and a chord which bears North 05 degrees 31 minutes 37 seconds West, for a distance of 93.90 feet;

THENCE Northwesterly, continuing along said east line of Ridge Road and along said curve to the left, through a central angle of 04 degrees 38 minutes 21 seconds, for an arc distance of 93.93 feet, to a capped iron rod found for corner;

THENCE North 07 degrees 50 minutes 48 seconds West, continuing along said east line of Ridge Road, for a distance of 146.58 feet, to a capped iron rod found for the beginning of a curve to the right, having a radius of 1040.00 feet and a chord which bears North 04 degrees 49 minutes 06 seconds West, for a distance of 109.88 feet;

THENCE Northwesterly, continuing along said east line of Ridge Road and along said curve to the right, through a central angle of 06 degrees 03 minutes 23 seconds, for an arc distance of 109.93 feet, to a capped iron rod set for the northwest corner of aforementioned tract of land, same being the southwest corner of a tract of land conveyed to REINS INVESTMENTS, LTD., by deed recorded in Instrument Number 20121120001485580, Official Public Records, Collin County, Texas;

THENCE South 88 degrees 03 minutes 29 seconds East, departing said east line of Ridge Road and along the south line of said tract of land, same being the north line of aforementioned tract of land, for a distance of 958.32 feet, to a capped iron rod set for the southeast corner of said tract of land, same being the northeast corner of aforementioned tract of land, also being in the west line of STONEBRIDGE ESTATES PHASE III according to the plat recorded in Cabinet M, Page 301, Map Records, Collin County, Texas, and being located along the approximate centerline of a creek, the following three, (3) courses and distances:

South 32 degrees 36 minutes 52 seconds East, for a distance of 39.97 feet, to a capped iron rod set for corner;

South 16 degrees 14 minutes 21 seconds East, for a distance of 129.59 feet, to a capped iron rod set for corner;

South 27 degrees 54 minutes 04 seconds West, for a distance of 43.81 feet, to a capped iron rod set for corner;

EXHIBIT B

THENCE South 52 degrees 17 minutes 06 seconds West, for a distance of 100.03 feet, to a capped iron rod set for the southwest corner of aforementioned PHASE III, and being the northerly corner of Lot 6, STONEBRIDGE ESATES PHASE I according to the plat recorded in Cabinet I, Page 469, Map Records, Collin County, Texas;

THENCE along the west line of said PHASE I and continuing with the approximate centerline of said creek, the following six, (6) courses and distances;

South 52 degrees 17 minutes 06 seconds West, for a distance of 103.36 feet, to a capped iron rod set for corner;

South 67 degrees 03 minutes 00 seconds West, for a distance of 87.77 feet, to a capped iron rod set for corner;

South 53 degrees 07 minutes 41 seconds West, for a distance of 76.96 feet, to a capped iron rod set for corner;

South 02 degrees 53 minutes 55 seconds West, for a distance of 36.03 feet, to a capped iron rod set for corner;

South 19 degrees 58 minutes 21 seconds West, for a distance of 62.20 feet, to a capped iron rod set for corner;

South 08 degrees 02 minutes 19 seconds West, for a distance of 116.13 feet, to a capped iron rod set for the southeast corner of the aforementioned RT INVESTMENTS, LLC tract of land, same being the north line of aforementioned ALTAMURA ESTATES tract of land;

THENCE North 89 degrees 55 minutes 55 seconds West, along said north line, for a distance of 597.67 feet, to the **POINT OF BEGINNING**, and containing 11.609 acres or 505,670 square feet of land, more or less.

EXHIBIT B

Tract 2:

BEING a 6.035 acre tract of land situated in the Stanley B. Searcy Survey, Abstract Number 818, City of McKinney, Collin County, Texas, same being a tract of land conveyed to REINS INVESTMENTS, LTD., by deed recorded in Instrument Number 20121120001485580, Official Public Records, Dallas County, Texas, being more particularly described as follows:

BEGINNING at a capped iron rod found in the east right-of-way of Ridge Road (120' R.O.W.), same being the northwest corner of said tract of land, same being the southwest corner of a tract of land conveyed to POINTE EMERALD HEIGHTS, LLC, by deed recorded in Instrument Number 20160511000578480, Official Public Records, Collin County, Texas;

THENCE departing said east right-of-way line and along the north and south lines of said tracts of land, further being located along the approximate centerline of a creek, the following seventeen, (17) courses and distances;

South 89 degrees 16 minutes 01 seconds East, for a distance of 64.83 feet, to a capped iron rod set for corner;

South 66 degrees 26 minutes 14 seconds East, for a distance of 46.90 feet, to a capped iron rod set for corner;

South 85 degrees 51 minutes 23 seconds East, for a distance of 33.70 feet, to a capped iron rod set for corner;

South 37 degrees 39 minutes 36 seconds East, for a distance of 166.92 feet, to a capped iron rod set for corner;

South 68 degrees 58 minutes 37 seconds East, for a distance of 55.26 feet, to a capped iron rod set for corner;

South 78 degrees 57 minutes 10 seconds East, for a distance of 52.56 feet, to a capped iron rod set for corner;

South 59 degrees 26 minutes 45 seconds East, for a distance of 67.46 feet, to a capped iron rod set for corner;

South 35 degrees 06 minutes 10 seconds East, for a distance of 35.88 feet, to a capped iron rod set for corner;

South 06 degrees 04 minutes 50 seconds East, for a distance of 30.12 feet, to capped iron rod set for corner;

South 42 degrees 31 minutes 03 seconds East, for a distance of 83.46 feet, to a capped iron rod set for corner;

South 55 degrees 49 minutes 25 seconds East, for a distance of 31.62 feet, to a capped iron rod set for corner;

South 67 degrees 05 minutes 35 seconds East, for a distance of 46.18 feet, to a capped iron rod set for corner;

EXHIBIT B

South 43 degrees 46 minutes 34 seconds East, for a distance of 45.53 feet, to a capped iron rod set for corner;

South 33 degrees 42 minutes 16 seconds East, for a distance of 41.48 feet, to a capped iron rod set for corner;

South 60 degrees 15 minutes 41 seconds East, for a distance of 113.40 feet, to a capped iron rod set for corner;

North 64 degrees 31 minutes 51 seconds East, for a distance of 33.52 feet, to a capped iron rod set for corner;

South 80 degrees 32 minutes 11 seconds East, for a distance of 141.73 feet, to a capped iron rod set for the southeast corner of said tract of land, same being the west line of STONEBRIDGE ESTATES PHASE III according to the plat recorded in Cabinet M, Page 301, Map Records, Collin County, Texas, and being located along the approximate centerline of a creek, the following two, (2) courses and distances:

South 12 degrees 55 minutes 03 seconds East, for a distance of 33.64 feet, to a capped iron rod set for corner;

South 32 degrees 36 minutes 52 seconds East, for a distance of 23.44 feet, to a capped iron rod set for corner;

THENCE North 88 degrees 03 minutes 29 seconds West, departing said PHASE III, same being the southeast corner of aforementioned tract of land, also being the northeast corner of a tract of land conveyed to RT INVESTMENTS, LLC, by deed recorded in Instrument Number 20120926001215740, Official Public Records, Collin County, Texas, for a distance of 958.32 feet, to a capped iron rod set in the aforementioned east line of Ridge Road and being the beginning of a curve to the right, having a radius of 1040.00 feet, and a chord which bears North 00 degrees 31 minutes 04 seconds West, for a distance of 46.19 feet;

THENCE Northwesterly, along said east line of Ridge Road and along said curve to the right, through a central angle of 02 degrees 32 minutes 42 seconds, for an arc distance of 46.20 feet;

THENCE North 00 degrees 43 minutes 44 seconds East, continuing along the east line of said Ridge Road, for a distance of 155.91 feet, to a capped iron rod set for the beginning of a curve to the right, having a radius of 979.98 feet, and a chord which bears North 10 degrees 20 minutes 46 seconds East, for a distance of 330.78 feet;

THENCE Northeasterly, continuing along said Ridge Road and along said curve to the right, through a central angle of 19 degrees 25 minutes 57 seconds, for an arc distance of 332.37 feet, to the **POINT OF BEGINNING**, and containing 6.035 acres or 262,879 square feet of land, more or less.

