

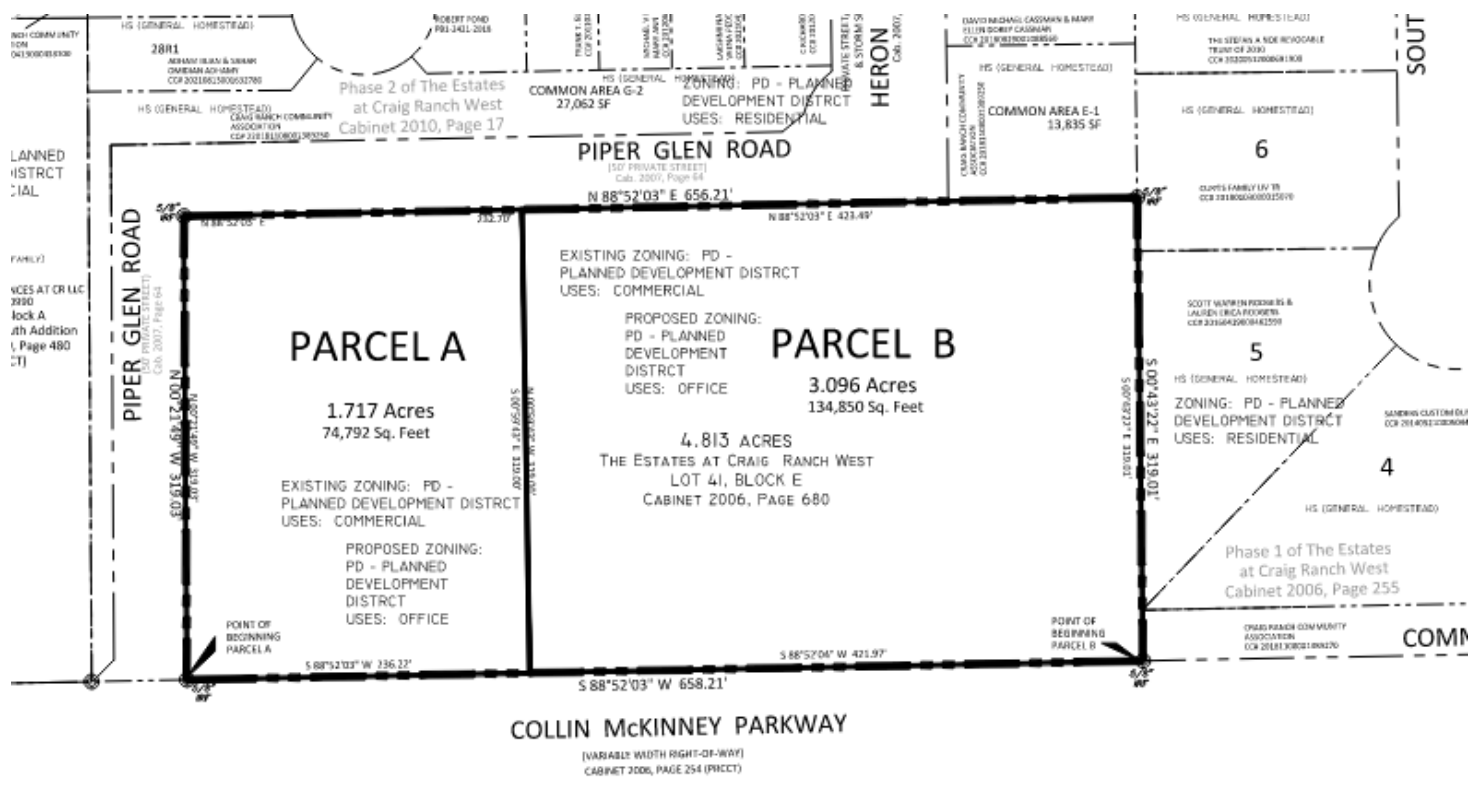
# Estates at Craig Ranch West Office Rezoning

21-0156Z





# Proposed Zoning Exhibit



ZONING: SO - SUBURBAN OFFICE  
 USES: OFFICE

LOT 2R1, BLOCK A  
 COLLIN MCKINNEY  
 COMMERCIAL  
 ADDITION  
 CAB. 2018, PG 890

