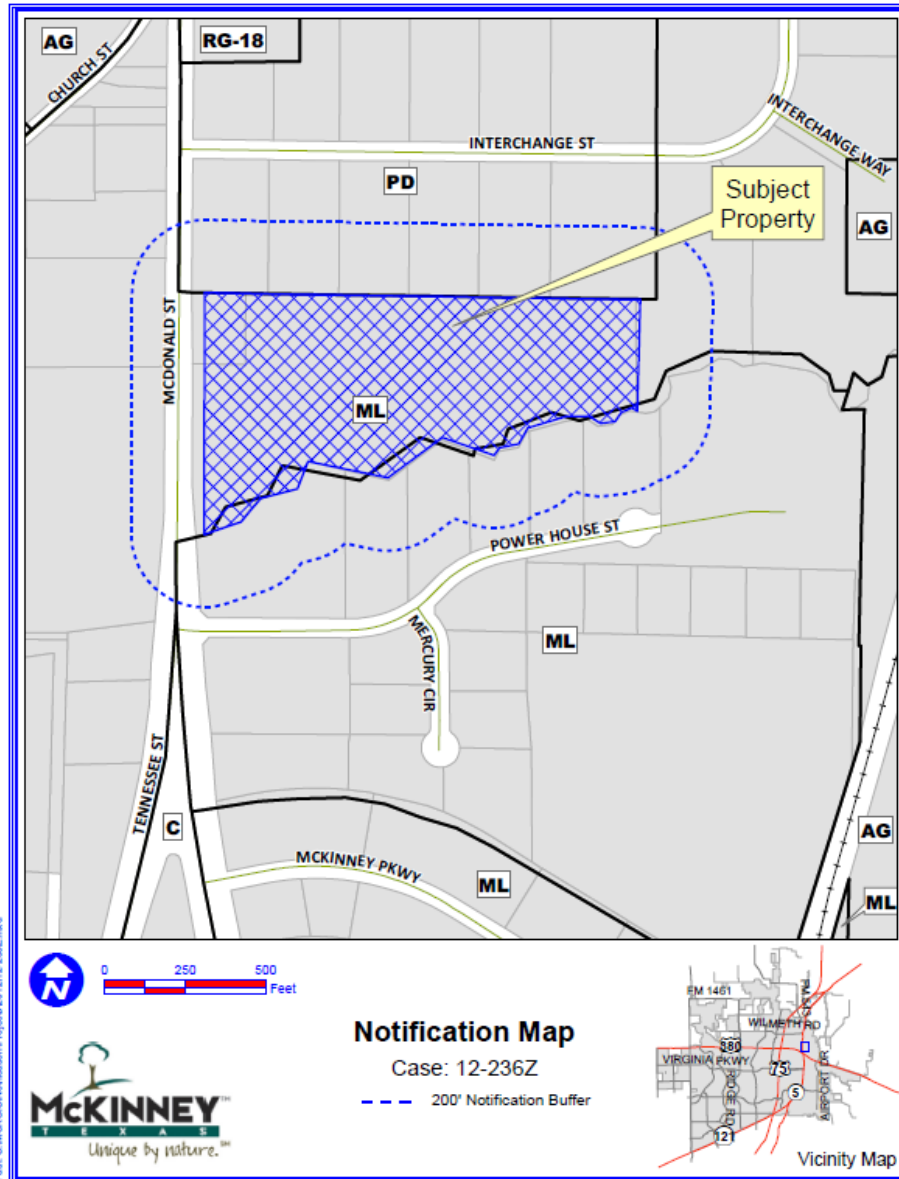


Case No. 12-236Z
Samaritan Inn
City of McKinney
Planning



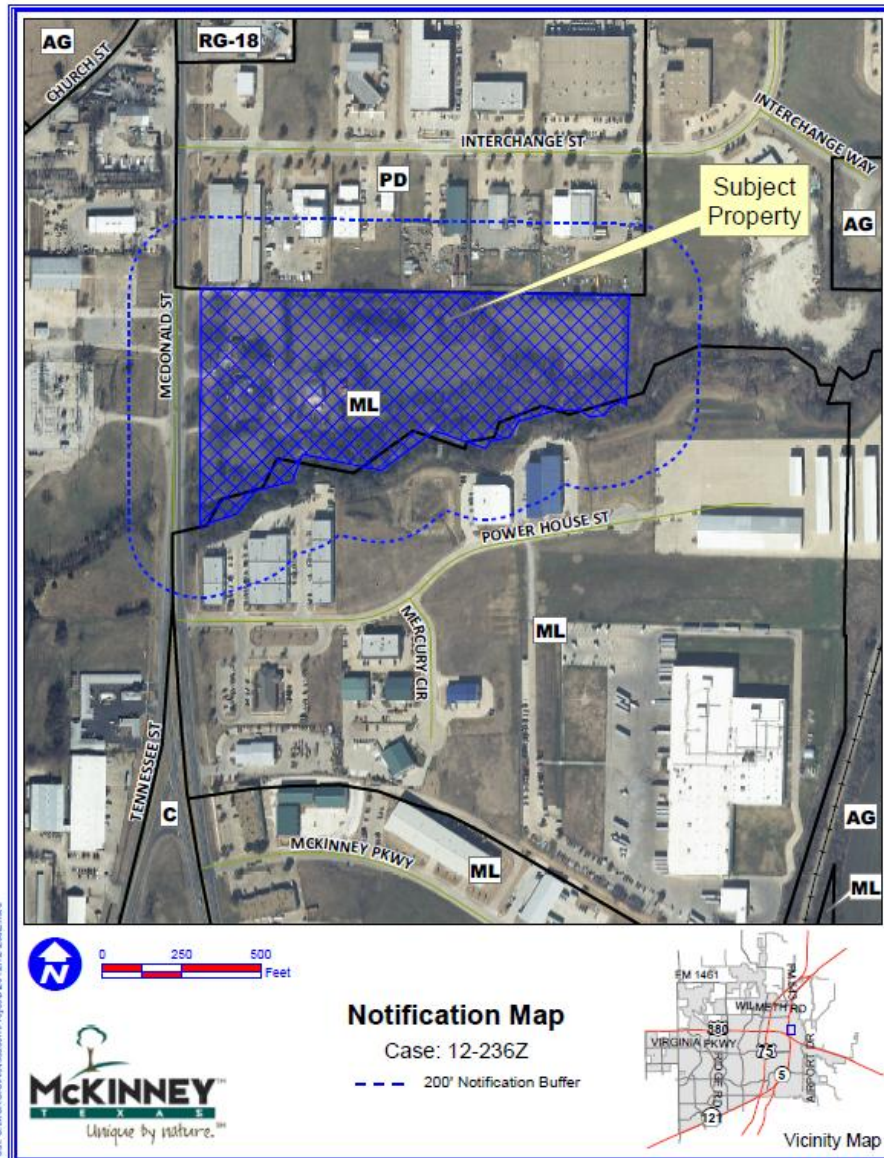
Location Map



Path: S:\MCKG\GIS\Notification\Project\1212-236Z.mxd

DISCLAIMER: This map and information contained in it were developed exclusively for use by the City of McKinney. Any use or reliance on this map by anyone else is at that party's risk and without liability to the City of McKinney, its officials or employees for any discrepancies, errors, or variances which may exist.

Aerial Exhibit



DISCLAIMER: This map and information contained in it were developed exclusively for use by the City of McKinney. Any use or reliance on this map by anyone else is at that party's risk and without liability to the City of McKinney, its officials or employees for any discrepancies, errors, or variances which may exist.



Staff Recommendation

Staff recommends **approval** as outlined in the Staff Report.