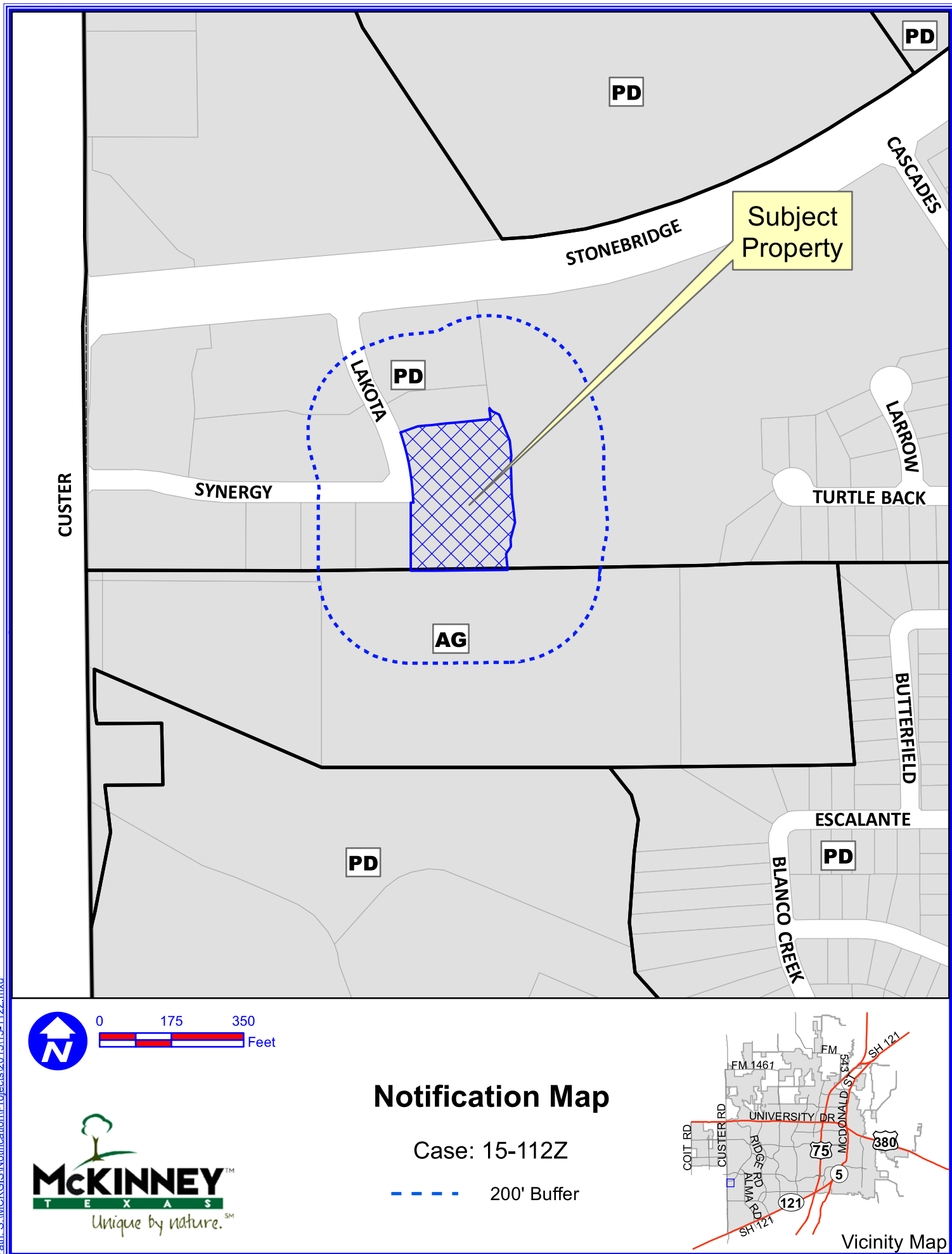


Exhibit A



Path: S:\MCKGIS\Notification\Projects\2015\15-112Z.mxd



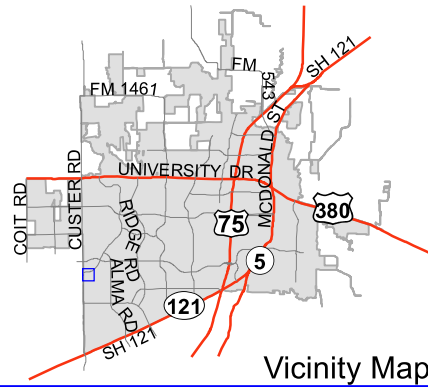
0 175 350 Feet



Notification Map

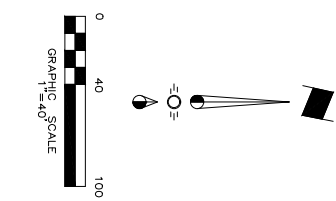
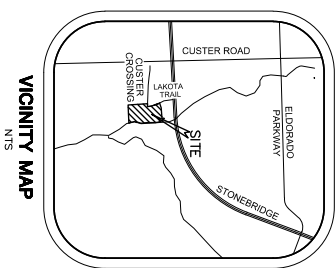
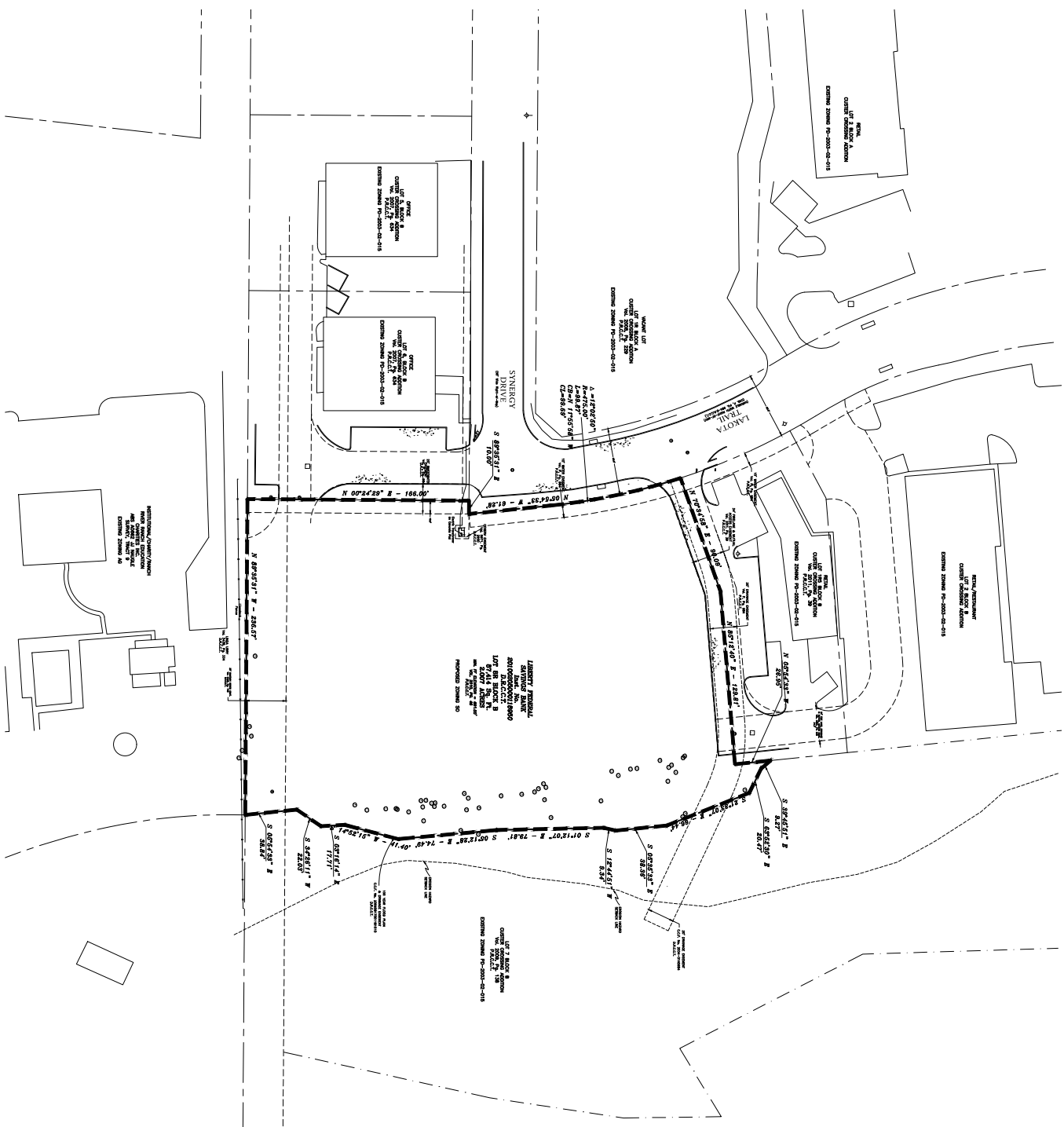
Case: 15-112Z

--- 200' Buffer



DISCLAIMER: This map and information contained in it were developed exclusively for use by the City of McKinney. Any use or reliance on this map by anyone else is at that party's risk and without liability to the City of McKinney, its officials or employees for any discrepancies, errors, or variances which may exist.

Exhibit B



LEGEND
 ■ Limits of Zoning

SITE DATA TABLE

Zoning:	Lot 1R3, Block A
Existing:	FD 2003-022-015
Proposed:	SO

Area Information:
 2,007 Acres at Custer Crossing Addition, situated in the JLS Node Strategy, McKimney, Collin County, Texas.

Issue Dates:	Revisions:	Date:
1	1	
2	2	
3	3	
4	4	
5	5	
6	6	

CROSS ENGINEERING CONSULTANTS
 1315 Renaissance St.
 McKinney, Texas 75069
 972.562.4400

Drawn By: C.E.C.L. Checked By: C.E.C.L. Scale: 1" = 40'

ZONING EXHIBIT
 SYNERGY PLAZA
 Lot 8R, Block B
 Custer Crossing Addition
 City of McKinney, Texas

Project No. 1501.3

NOTE: THIS IS NOT A CONSTRUCTION DOCUMENT.
 THIS DOCUMENT IS FOR CONCEPTUAL PLANNING PURPOSES ONLY.
 (at least 72 hours prior to digging)



RECEIVED
 By Planning Department at 8:43 am, May 07, 2015