



North Texas Municipal Water District

PROPOSED REGIONAL WATER RESOURCE RECOVERY FACILITY

REGIONAL SERVICE THROUGH UNITY...MEETING OUR REGION'S NEEDS TODAY AND TOMORROW

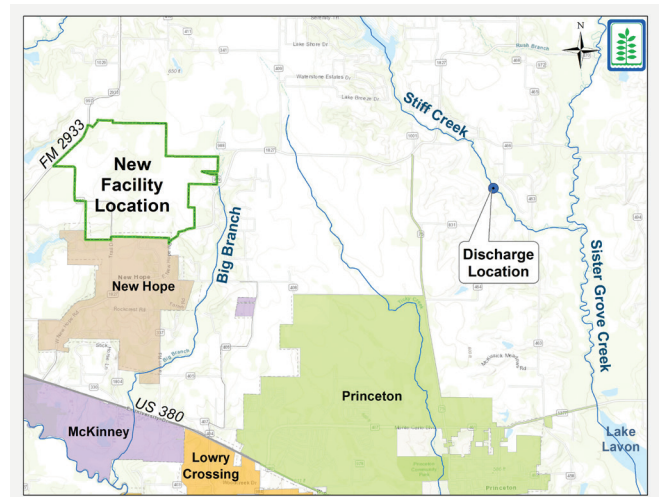
North Texas Municipal Water District

Administration Building
501 East Brown St.
P.O. Box 2408
Wylie, TX 75098

972.442.5405
www.NTMWD.com

The North Texas Municipal Water District (NTMWD) provides wastewater treatment services to more than **one million people across 24 communities** in the North Texas region. Some of the **fastest growing communities in the nation** are located in the northern part of the NTMWD service area. To continue reliably serving these thriving communities, **we must plan for the future.**

To meet growing needs in the northern part of our regional system, a **new regional water resource recovery facility is being planned.** From 2016 to 2017, the NTMWD conducted a thorough evaluation to identify a suitable location for the proposed facility. As part of this process, several important factors were considered, including proximity to existing infrastructure, projected demands within the service area, physical geographic constraints, available land, existing and planned transportation corridors, capital and operations costs (such as the energy required for conveyance pumping) and regulatory requirements.



After weighing such factors, NTMWD has identified and purchased the planned site located approximately 1.1 miles east and 0.17 miles south of the FM 2933 and County Road 336 intersection.

Now that a site has been selected, the **Texas Commission on Environmental Quality Permitting process** will begin. To learn more about this process, visit <https://www.tceq.texas.gov/agency/working-with-us/permitting-participation/municipal-wastewater>.

What is a Water Resource Recovery Facility?

Water Resource Recovery Facilities provide wastewater treatment prior to discharging into a body of water. These facilities are a critical element in maintaining the health of our watersheds. NTMWD is voluntarily implementing a watershed protection plan to further safeguard the Lavon Lake watershed with increasing urbanization in the area.

Why do we need the new Regional Water Resource Recovery Facility?

Currently 700,000+ people are served by two facilities and projected growth will exceed the existing facilities serving Collin County by 2023

Proposed Regional Water Resource Recovery Facility at a glance:

- Located near the FM 2933 and County Road 336 intersection
- NTMWD purchased approximately 1,000 acres for the site
- Project is currently in early phase of design and permitting
- A discharge location was identified based on proximity and operational factors
- Will include advanced treatment and odor control technologies



WATER



WASTEWATER



SOLID WASTE

Blending into the Surrounding Community

NTMWD plans to design the new facility to **visually integrate into the local community** using landscaping and berms to screen various aspects of the facility and for those more visible structures, designing architecture compatible with community surroundings. NTMWD will also design the facility to **mitigate and minimize local impacts due to odor, noise or light** from the facility. Advanced treatment and odor control technologies will be used. Additionally, noise can be mitigated with the use of sound enclosures or buildings around specific equipment or processes. Use of modern LED (warm-white lighting), downward facing lights, and noncritical lighting that is motion activated can reduce lighting effects to nearby areas.



NTMWD's Wilson Creek facility is a great example of how a water resource recovery facility can integrate into the surrounding community. The facility (shown above) is designed to blend with neighboring rural residential structures by having structures visible to the public modeled after nearby farm buildings, in keeping with the neighborhood aesthetic. This new facility will follow a similar approach to blend with the neighboring community.

Protecting & Mitigating Environmental Impacts

Protecting water resources and preserving the natural environment is a high priority. Similar NTMWD facilities operate in this same manner and **discharged water is typically of higher quality than naturally existing water** in creeks and streams. As our team determined the location of the facility and its outfall location, a site was selected to minimize impacts on area streams and Lavon Lake. The facility will be designed to maintain the natural surroundings at the outfall location. As the project continues, NTMWD will:

- Comply with all local, state and federal environmental protection requirements from design through operations
- Engage with area communities throughout facility planning, construction and operation
- Treat recovered water resources to high quality in compliance with TCEQ requirements

Project Timeline

Based on the projected wastewater flows, NTMWD must have the facility operating by 2023. The following timeline shows approximate dates of completion for various project phases.

Site Analysis
2016 - 2017

Facility Design
2018 - 2020

TCEQ Permitting
2018 - 2019

Construction
2020 - 2023

Operations
2023 and onward

Communication and Progress Updates

NTMWD will inform and update the community during every step of this project, from permitting and design through operations. As we begin the permitting in summer 2018, the community will have opportunities to ask questions and learn more from our project team. This includes directly affected or adjacent community members to ensure successful integration of the facility within the community. Our team will:

- Work with community members to plan for and reduce impacts due to construction
- Communicate regularly on planning, permitting, future construction and operations
- Host open houses and informational meetings throughout the project
- Provide updates on the NTMWD website and social media channels

HAVE QUESTIONS?

Contact us at 972-442-5405 or publicrelations.info@ntmwd.com