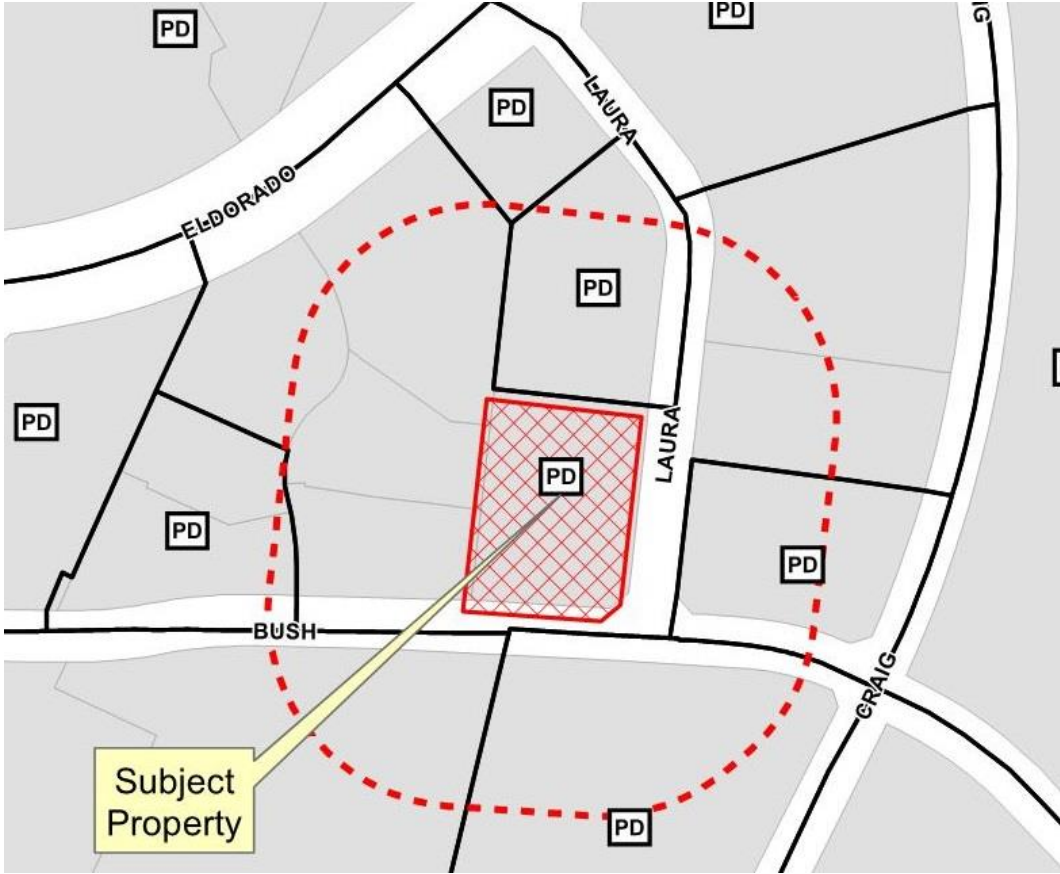


# Medical/General Offices

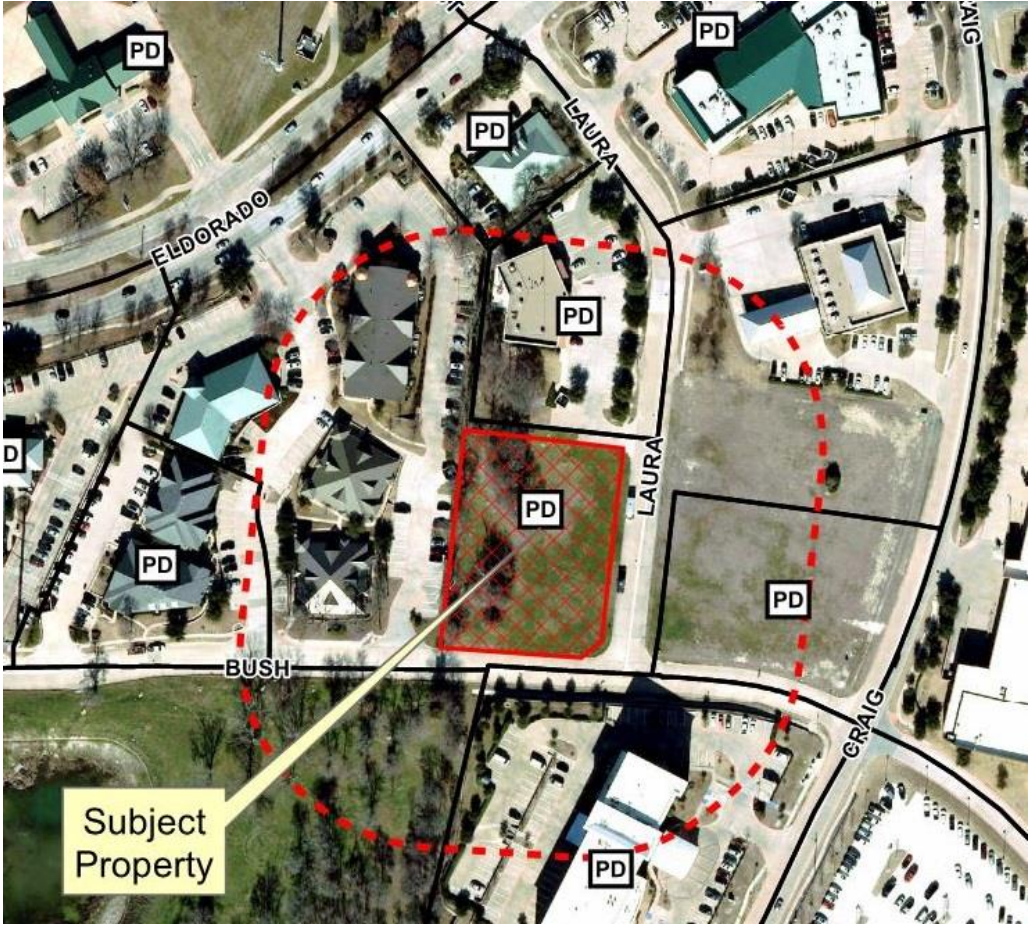
17-025SP



# Location Map

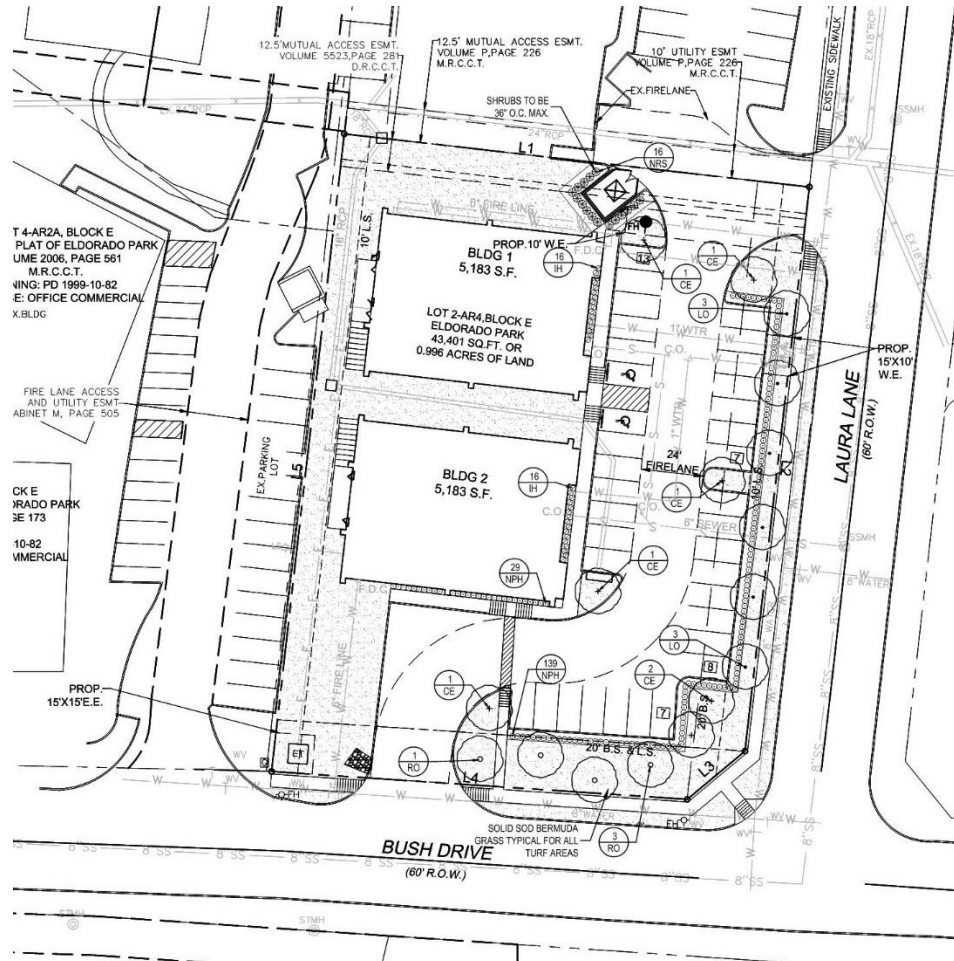


# Aerial Exhibit

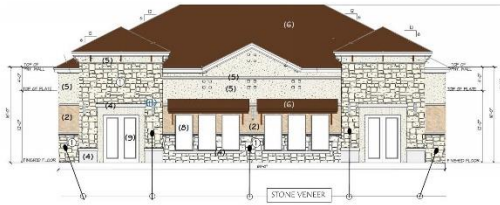




# Proposed Landscape Plan



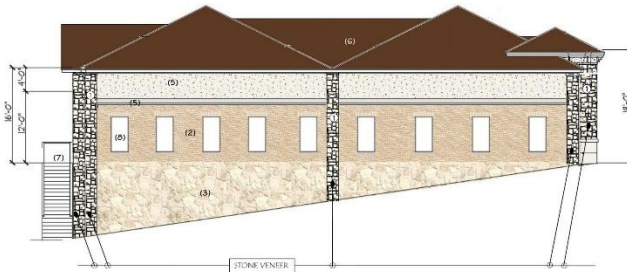
# Proposed Elevations



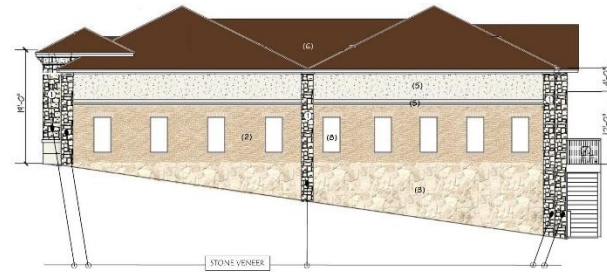
EAST ELEVATION		SCALE: 1/8" = 1'-0"	
FACADE MATERIAL PERCENTAGES		SQ. FT.	%
STONE VENEER		643	51.9%
BRICK		312	25%
HAIR-COAT STUCCO		306	24.8%
CANYON STONE		128	10.3%



WEST ELEVATION		SCALE: 1/8" = 1'-0"	
FACADE MATERIAL PERCENTAGES		SQ. FT.	%
STONE VENEER		492	39.9%
BRICK		1288	100.7%
FIELDSTONE		548	43.3%



SOUTH ELEVATION		SCALE: 1/8" = 1'-0"	
FACADE MATERIAL PERCENTAGES		SQ. FT.	%
STONE VENEER		352	20.9%
BRICK		478	29.1%
HAIR-COAT STUCCO		795	48.7%
FIELDSTONE		480	30.3%



NORTH ELEVATION		SCALE: 1/8" = 1'-0"	
FACADE MATERIAL PERCENTAGES		SQ. FT.	%
STONE VENEER		352	20.9%
BRICK		478	29.1%
HAIR-COAT STUCCO		795	48.7%
FIELDSTONE		480	30.3%

