

OVERALL PLANT SCHEDULE							
ORNAMENTAL TREES	QTY	BOTANICAL / COMMON NAME	CONTAINER	HEIGHT	SPREAD	CALIPER	
4	CERCIS CANADENSIS TEXENSIS TEXAS REDBUD SINGLE TRUNK	15 GAL	6-8 FT	4-6 FT	2"		
8	CHILOPSIS LINEARIS DESERT WILLOW MULTI TRUNK 3-5 CANES	15 GAL	6-8 FT	4-6 FT	1 1/2"		
4	DERMATOPHYLLUM SECUNDFLORUM TEXAS MOUNTAIN LAUREL MULTI-TRUNK 3-5 CANES	15 GAL	8-10 FT	4-6 FT	2"		
8	LAGERSTROEMIA INDICA 'CENTENNIAL SPIRIT' CENTENNIAL SPIRIT GRAPE MYRTLE MULTI-TRUNK 3-5 CANES	15 GAL	8-10 FT	4-6 FT	2"		
4	LAGERSTROEMIA INDICA X FAURIEI 'NATCHEZ' NATCHEZ GRAPE MYRTLE SINGLE TRUNK	15 GAL	6-8 FT	4-6 FT	2"		
3	UNGADIA SPECIOSA MEXICAN BUCKEYE SINGLE-TRUNK	15 GAL	6-8 FT	4-6 FT	1 1/2"		
14	VITEX AGNUS-CASTUS CHASTE TREE MULTI-TRUNK 3-5 CANES	15 GAL	6-8 FT	4-6 FT	1 1/2"		
CANOPY TREES	QTY	BOTANICAL / COMMON NAME	CONTAINER	HEIGHT	SPREAD	CALIPER	
5	ACER TRUNCATUM SHANTUNG MAPLE	B & B	12-14 FT	4-6 FT	4"		
27	PISTACIA CHINENSIS CHINESE PISTACHE	B & B	12-14 FT	4-6 FT	4"		
26	QUERCUS MUEHLENBERGII CHINKAPIIN OAK	B & B	12-14 FT	4-6 FT	4"		
22	QUERCUS SHUMARDII RED OAK	B & B	12-14 FT	4-6 FT	4"		
2	QUERCUS VIRGINIANA LIVE OAK	B & B	12-14 FT	4-6 FT	4"		
8	TAXODIUM DISTICHUM BALD CYPRESS	B & B	12-14 FT	4-6 FT	4"		
24	ULMUS CRASSIFOLIA CEDAR ELM	B & B	12-14 FT	4-6 FT	4"		
63	ULMUS PARVIFOLIA 'EMER II' TM ALLEE LACEBARK ELM	B & B	12-14 FT	4-6 FT	4"		
SHRUBS	QTY	BOTANICAL / COMMON NAME	CONTAINER	HEIGHT	SPREAD	CALIPER	SPACING
124	SALVIA GREGGII AUTUMN SAGE	3 GAL	1 FT	1 FT	-N/A-	30" o.c.	
EVERGREENS	QTY	BOTANICAL / COMMON NAME	CONTAINER	HEIGHT	SPREAD	CALIPER	SPACING
94	ABELIA X GRANDIFLORA 'DWARF' DWARF GLOSSY ABELIA MIN. 2' HT. AT TIME OF PLANTING	5 GAL	2 FT	24"	-N/A-	36" o.c.	
258	LEUCOPHYLLUM CANDIDUM 'THUNDER CLOUD' TM THUNDER CLOUD TEXAS SAGE MIN. 2' HT. AT TIME OF PLANTING	5 GAL	2 FT	24"	-N/A-	36" o.c.	
115	MYRRICA PUSILLA 'DWARF' SOUTHERN WAX MYRTLE MIN. 2' HT. AT TIME OF PLANTING	5 GAL	2 FT	24"	-N/A-	36" o.c.	
FERNS	QTY	BOTANICAL / COMMON NAME	CONTAINER	HEIGHT	SPREAD	CALIPER	SPACING
124	CYRTOMIUM CARYOTIDEUM HOLLY FERN	3 GAL	2 FT	3 FT	-N/A-	36" o.c.	
160	DRYOPTERIS ERYTHROSORA AUTUMN FERN	3 GAL	1 FT	1 FT	-N/A-	30" o.c.	
92	THELYPTERIS NORMALIS SOUTHERN WOOD FERN	3 GAL	1 FT	1 FT	-N/A-	36" o.c.	

GROUNDCOVERS	QTY	BOTANICAL / COMMON NAME	CONTAINER	HEIGHT	SPREAD	CALIPER	SPACING
152	PHYLIA INCISA FROG FRUIT	1 GAL	6"	1 FT	-N/A-	18" o.c.	
ORNAMENTAL GRASSES	QTY	BOTANICAL / COMMON NAME	CONTAINER	HEIGHT	SPREAD	CALIPER	SPACING
204	BOUTELLOIA GRACILIS 'BLONDE AMBITION' BLONDE AMBITION BLUE GRAMA	3 GAL	1 FT	1 FT	-N/A-	30" o.c.	
179	CAREX DIVULSA EUROPEAN GREY SEDGE	1 GAL	1 FT	1 FT	-N/A-	24" o.c.	
64	MUHLENBERGIA CAPILLARIS PINK MUHLY GRASS	5 GAL	2 FT	2 FT	-N/A-	48" o.c.	
72	MUHLENBERGIA CAPILLARIS 'WHITE CLOUD' WHITE CLOUD MUHLY GRASS	5 GAL	2 FT	2 FT	-N/A-	36" o.c.	
188	NASSELLA TENUISSIMA MEXICAN FEATHER GRASS	3 GAL	1 FT	1 FT	-N/A-	30" o.c.	
29	SCHIZACHYRIUM SCOPARIUM LITTLE BLUESTEM	3 GAL	1.5'	1 FT	-N/A-	30" o.c.	
PERENNIALS	QTY	BOTANICAL / COMMON NAME	CONTAINER	HEIGHT	SPREAD	CALIPER	SPACING
207	CONOCLINIUM COELESTINUM BLUE MIST FLOWER	3 GAL	1 FT	1 FT	-N/A-	36" o.c.	
37	GAURA LINDHEIMERI GAURA	3 GAL	1 FT	1 FT	-N/A-	42" o.c.	
35	GLANDULARIA BIPINNATIFIDA PURPLE PRAIRIE VERBENA	1 GAL	1.5'	2 FT	-N/A-	18" o.c.	
32	LANTANA X 'NEW GOLD' NEW GOLD LANTANA	1 GAL	6"	6"	-N/A-	18" o.c.	
197	MALVAVISCUS ARBOREUS DRUMMONDII TURK'S CAP	3 GAL	1 FT	1 FT	-N/A-	36" o.c.	
186	MELAMPODIUM LEUCANTHUM BLACKFOOT DAISY	3 GAL	1 FT	1 FT	-N/A-	18" o.c.	
82	SALVIA FARINACEA 'HENRY DUELBERG' HENRY DUELBERG MEALY SAGE	3 GAL	1 FT	1 FT	-N/A-	36" o.c.	
120	SALVIA GUARANTICA 'BLACK & BLUE' BLACK & BLUE SAGE	3 GAL	1 FT	1 FT	-N/A-	30" o.c.	
219	SALVIA LYRATA LYRELEAF SAGE	1 GAL	1 FT	1 FT	-N/A-	18" o.c.	
72	SCUTELLARIA SUFFRUTESCENS PINK SKULLCAP	1 GAL	1 FT	1 FT	-N/A-	24" o.c.	
53	SCUTELLARIA WRIGHTII WRIGHT'S SKULLCAP	1 GAL	1 FT	1 FT	-N/A-	12" o.c.	
220	WEDELIA TEXANA ORANGE ZEXMENIA	3 GAL	1 FT	1 FT	-N/A-	24" o.c.	
VINES	QTY	BOTANICAL / COMMON NAME	CONTAINER	HEIGHT	SPREAD	CALIPER	SPACING
32	BIGNONIA CAPREOLATA CROSS VINE	3 GAL	1 FT	1 FT	-N/A-	24" o.c.	
YUCCAS/CACTI	QTY	BOTANICAL / COMMON NAME	CONTAINER	HEIGHT	SPREAD	CALIPER	SPACING
21	HESPERALOE PARVIFLORA RED YUCCA	3 GAL	1 FT	1 FT	-N/A-	42" o.c.	
13	OPUNTIA ELLISIANA SPINELESS PRICKLY PEAR	3 GAL	1 FT	1 FT	-N/A-	30" o.c.	
16	YUCCA RUPICOLA TWISTLEAF YUCCA	3 GAL	1 FT	1 FT	-N/A-	36" o.c.	

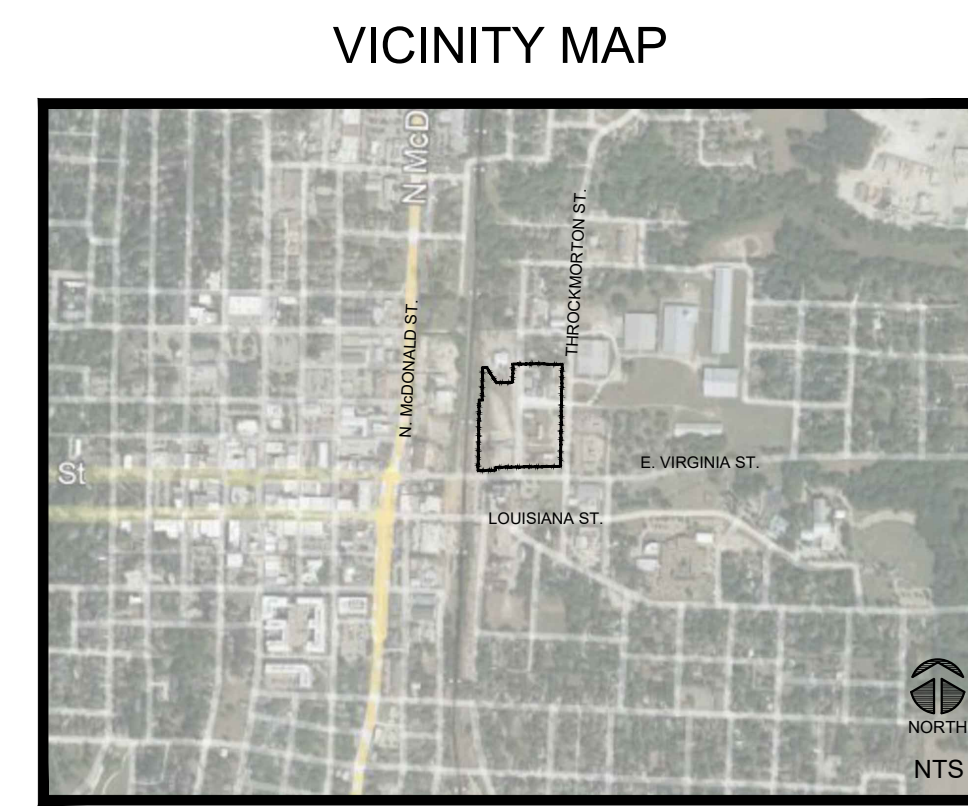
TURF	QTY	BOTANICAL / COMMON NAME
	72,553 SF	CYNODON DACTYLON 'CELEBRATION' BERMUDA GRASS

"I James Williams being a Landscape Architect attest that all required landscape areas shall be provided with an automatic underground irrigation system with rain and freeze sensors, and set irrigation system shall be design by qualified professional and installed by licensed irrigator.
 Signature _____ Date: 05/31/2022

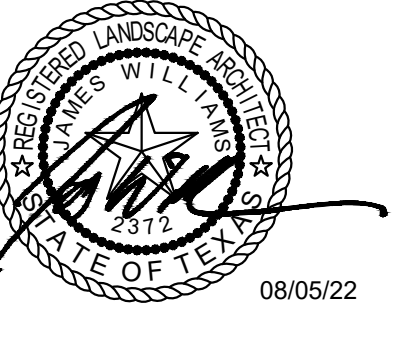
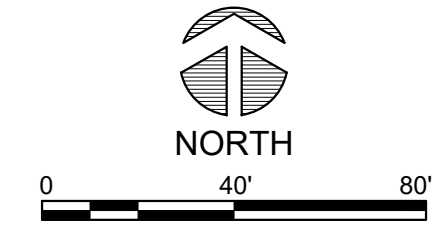
OWNER / DEVELOPER:
 CITY OF MCKINNEY
 222 N. TENNESSEE ST.
 MCKINNEY, TEXAS 75069
 PH. (972) 547-7439
 CONTACT: PATRICIA JACKSON
 FACILITIES CONSTRUCTION MANAGER

ENGINEER / APPLICANT:
 LAKE FLATO + PARKHILL
 3000 INTERNET BOULEVARD, SUITE 550
 FRISCO, TEXAS 75034
 PH. (972) 987-1670

EXISTING UTILITIES
 CONTRACTOR MUST VERIFY LOCATION OF ALL OVER-HEAD AND UNDERGROUND UTILITIES PRIOR TO CONSTRUCTION. CONTRACTOR SHALL COORDINATE WITH CITY OFFICIALS AND UTILITY COMPANIES IN LOCATING UTILITIES. CONTRACTOR SHALL BE HELD RESPONSIBLE FOR LOSSES DUE TO DAMAGE TO UTILITIES. LOCATION FOR ALL UTILITIES SHOWN ON PLANS ARE APPROXIMATE. CONTRACTOR SHALL CALL TEXAS 811, 1-800-344-6377.



CONTROL POINT #1	CONTROL POINT #2
"X" CUT TBM #26310	"X" CUT TBM #27498
N - 7125948.99 E - 2546399.86 ELEV. 600.40	N - 7125027.73 E - 2546391.77 ELEV. - 603.99

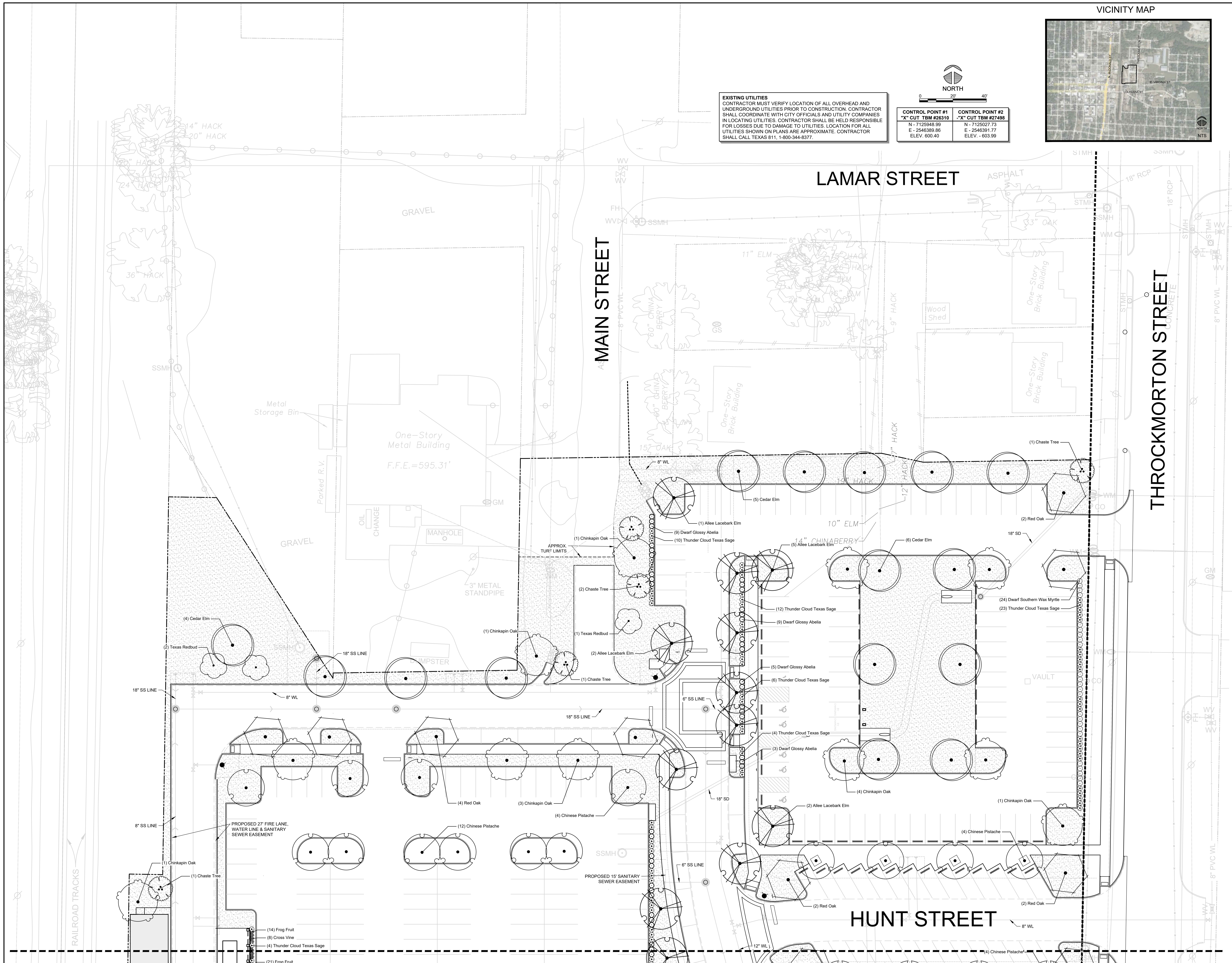


CLIENT
 City of McKinney
 201 E Virginia St
 McKinney, TX 75069

PROJECT NO.
 6028.20

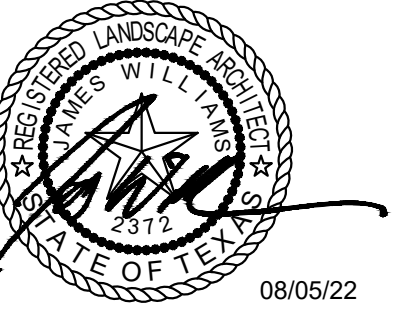
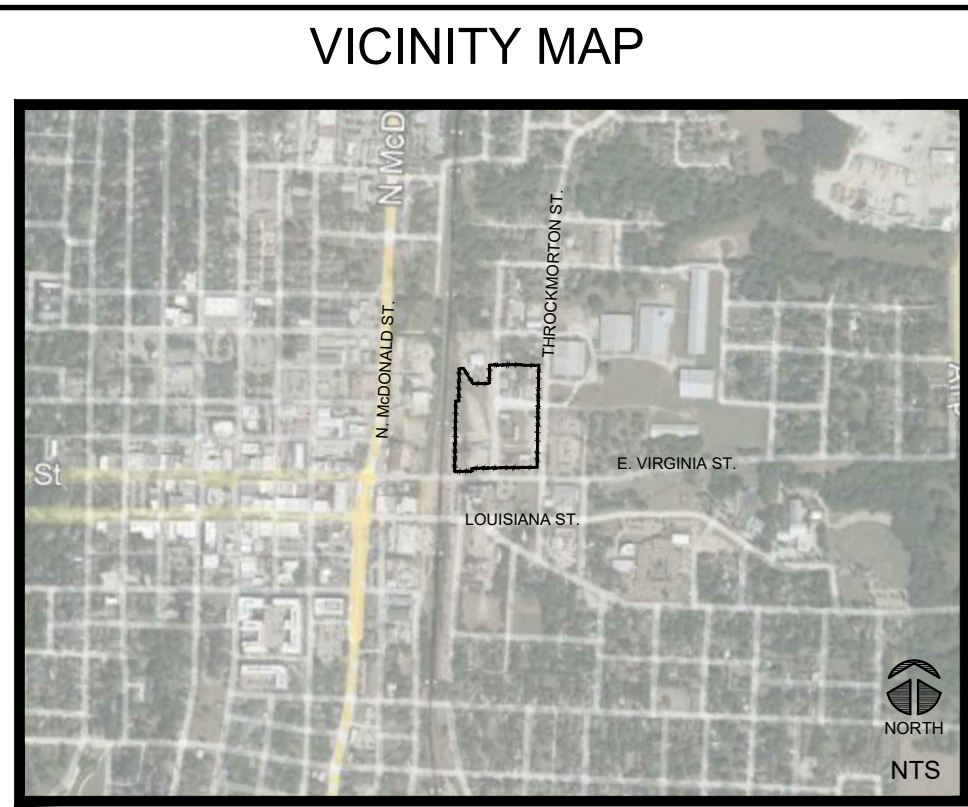
KEY PLAN

#	DATE	DESCRIPTION
1	08/05/2022	Site Plan Resubmittal
	05/31/2022	Site Plan Submittal



EXISTING UTILITIES
 CONTRACTOR MUST VERIFY LOCATION OF ALL OVERHEAD AND UNDERGROUND UTILITIES PRIOR TO CONSTRUCTION. CONTRACTOR SHALL COORDINATE WITH CITY OFFICIALS AND UTILITY COMPANIES IN LOCATING UTILITIES. CONTRACTOR SHALL BE HELD RESPONSIBLE FOR LOSSES DUE TO DAMAGE TO UTILITIES. LOCATION FOR ALL UTILITIES SHOWN ON PLANS ARE APPROXIMATE. CONTRACTOR SHALL CALL TEXAS 811, 1-800-344-8377.

CONTROL POINT #1 "X" CUT TBM #26310	CONTROL POINT #2 "X" CUT TBM #27498
N - 7125648.99	N - 7125027.73
E - 2546389.86	E - 2546391.77
ELEV. 600.40	ELEV. - 603.99

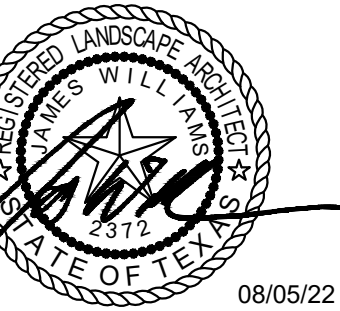
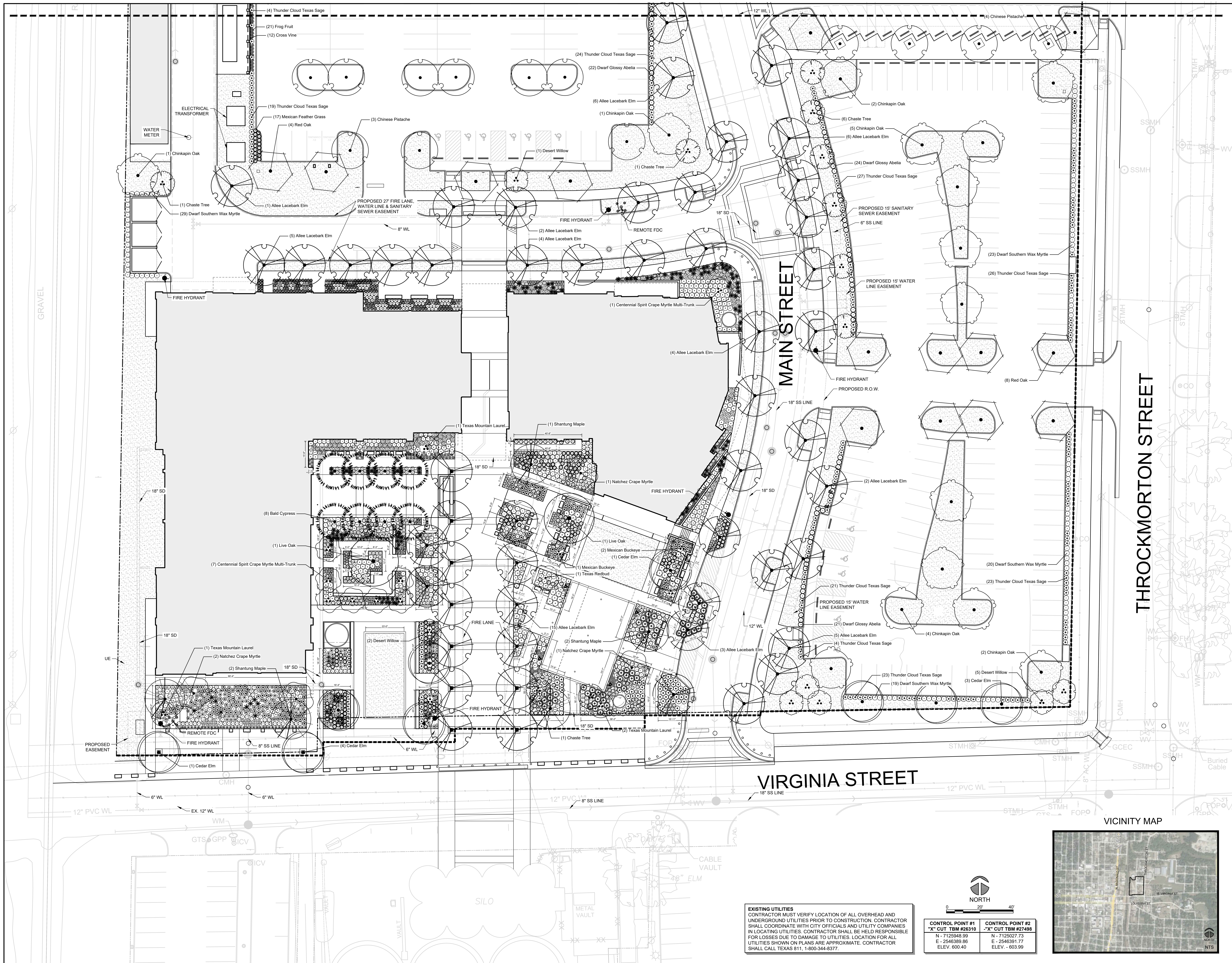


CLIENT
 City of McKinney
 201 E Virginia St
 McKinney, TX 75069

PROJECT NO.
 6028.20

KEY PLAN

#	DATE	DESCRIPTION
1	08/05/2022	Site Plan Resubmittal
	05/31/2022	Site Plan Submittal



#	DATE	DESCRIPTION
1	08/05/2022	Site Plan Resubmittal
2	05/31/2022	Site Plan Submittal

EXISTING UTILITIES
CONTRACTOR MUST VERIFY LOCATION OF ALL OVERHEAD AND UNDERGROUND UTILITIES PRIOR TO CONSTRUCTION. CONTRACTOR SHALL COORDINATE WITH CITY OFFICIALS AND UTILITY COMPANIES IN LOCATING UTILITIES. CONTRACTOR SHALL BE HELD RESPONSIBLE FOR LOSSES DUE TO DAMAGE TO UTILITIES. LOCATION FOR ALL UTILITIES SHOWN ON PLANS ARE APPROXIMATE. CONTRACTOR SHALL CALL TEXAS 811, 1-800-344-8377.

CONTROL POINT #1 "X" CUT TBM #26310	CONTROL POINT #2 "X" CUT TBM #27498
N - 7125948.99	N - 7125027.73
E - 2546389.86	E - 2546391.77
ELEV. 600.40	ELEV. - 603.99

