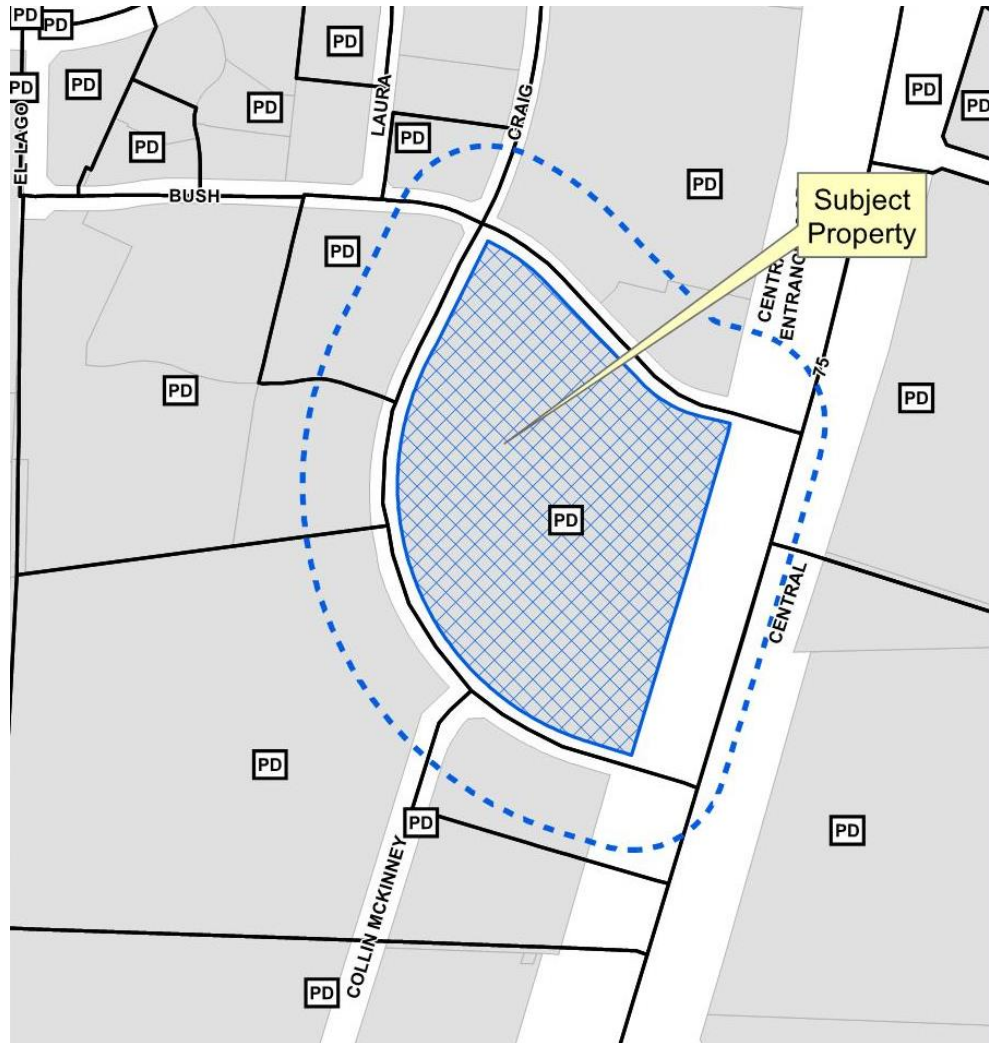


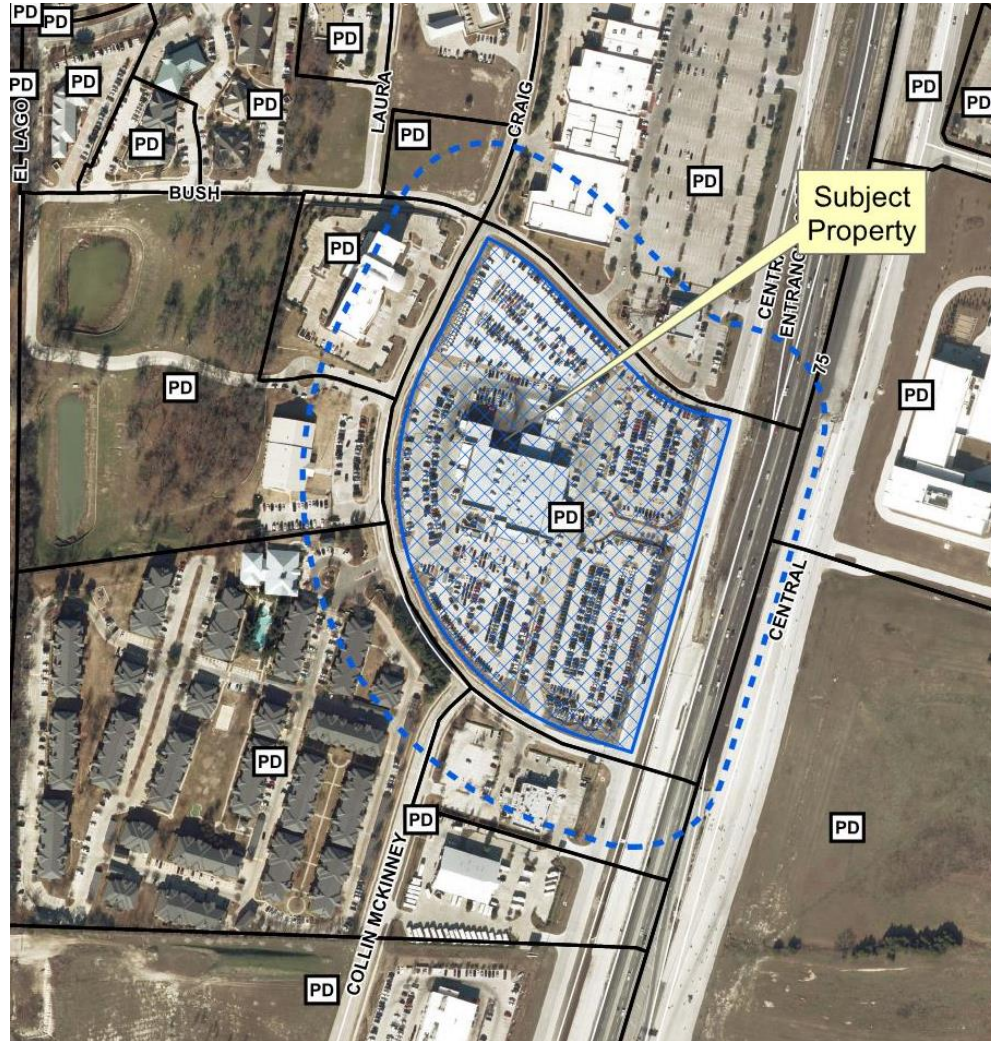
Toyota of McKinney  
Site Plan  
16-356SP



# Location Map

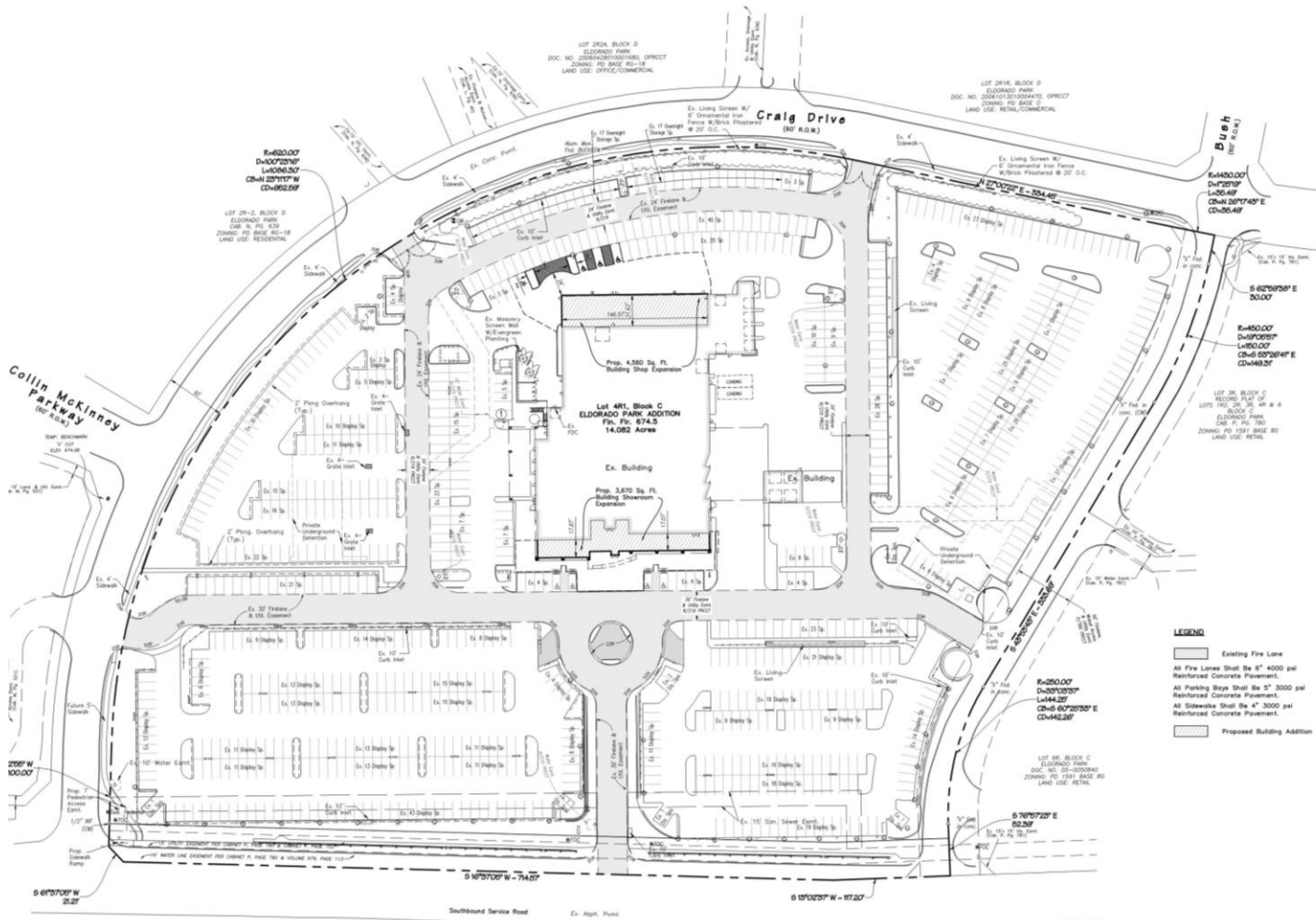


# Aerial Exhibit





# Proposed Site Plan



- LEGEND**
- Existing Fire Lane
  - All Fire Lanes Shall Be 6" 4000 psi Reinforced Concrete Pavement.
  - All Parking Bays Shall Be 5" 3000 psi Reinforced Concrete Pavement.
  - All Sidewalks Shall Be 4" 3000 psi Reinforced Concrete Pavement.
  - Proposed Building Addition

U.S. Highway No. 75 (North Central Expressway)  
Continued on sheet 60-1-1



# Proposed Landscape Plan

