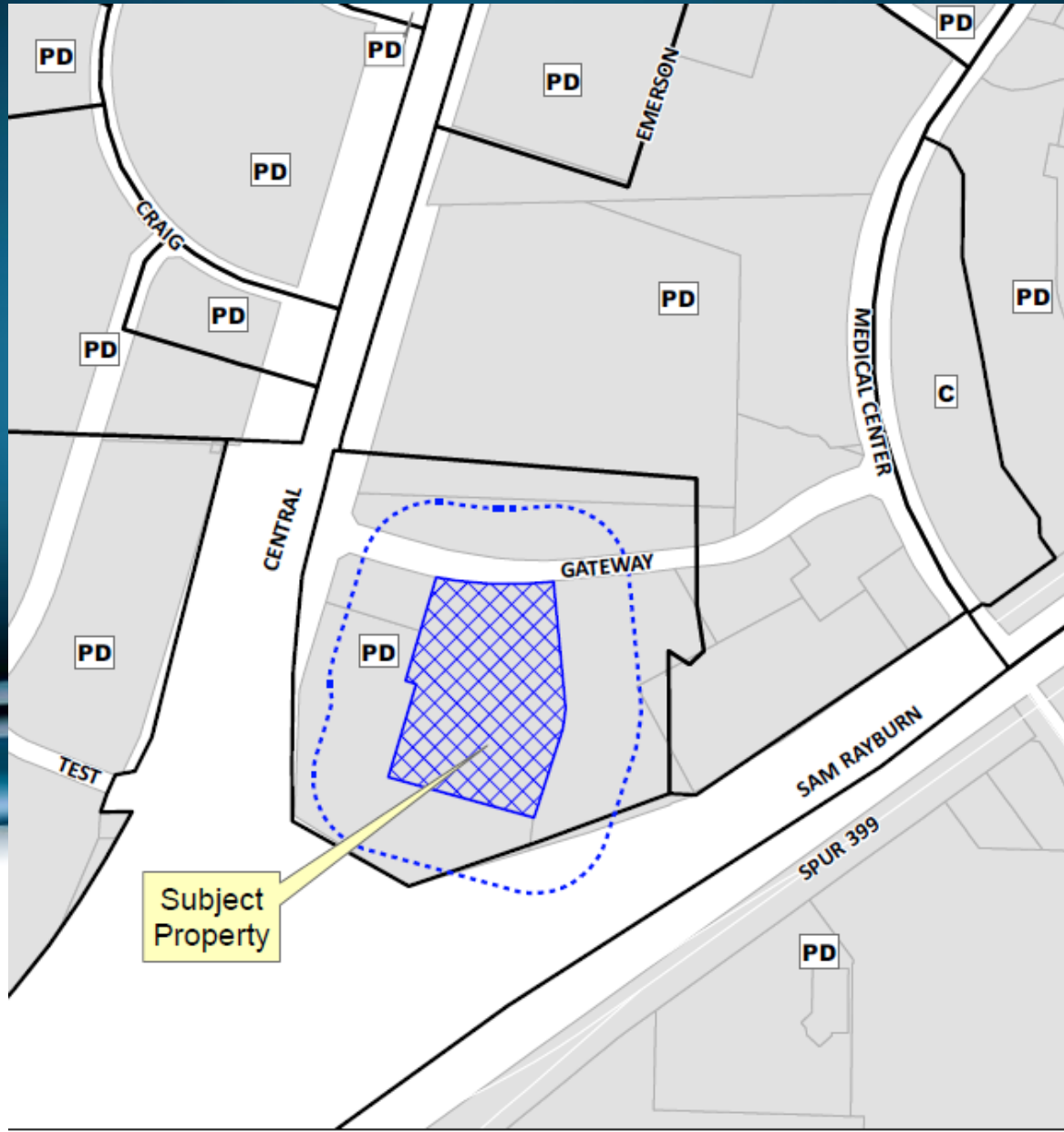


Case No. 13-179SP

Gateway Hotel and Event Center



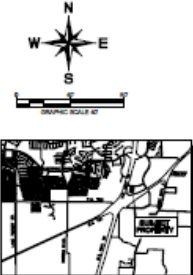
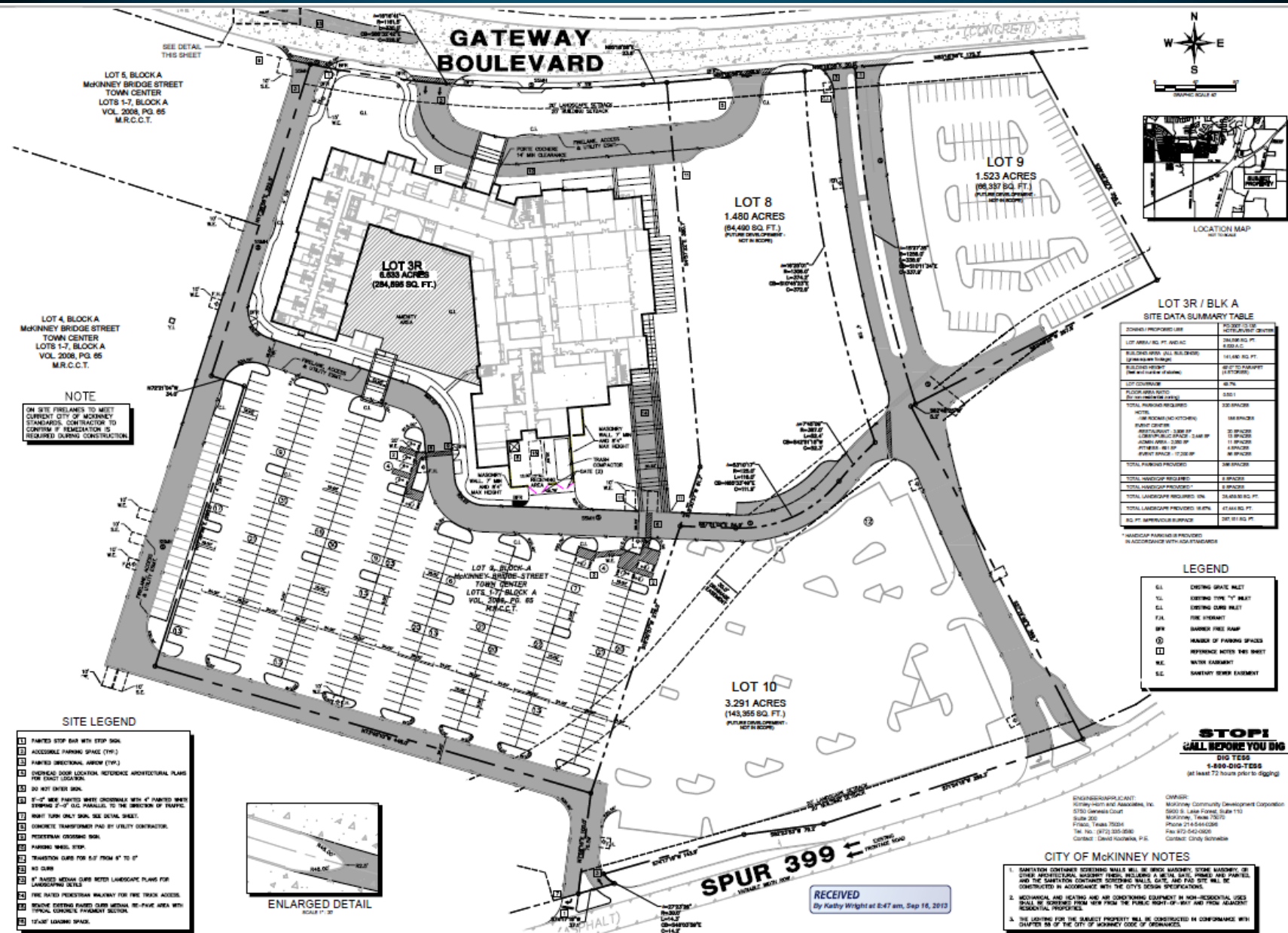
Location Map



Aerial Exhibit



Proposed Site Plan



LOT 3R / BLK A
SITE DATA SUMMARY TABLE

ZONING / PROPOSED USE	ACROSS-SECTION
LOT AREA / SQ. FT. / ACRE	284,886 / 6.52
BUILDING AREA / ALL BUILDINGS	141,440 / 3.31
SPREAD AREA	141,440 / 3.31
FLOOR AREA RATIO	0.50
TOTAL PARKING REQUIRED	200 SPACES
TOTAL LANDSCAPE REQUIRED	4 SPACES
TOTAL LANDSCAPE PROVIDED	20 SPACES
TOTAL LANDSCAPE PROVIDED IN EXCESS	16 SPACES
TOTAL LANDSCAPE PROVIDED IN DEFICIT	0 SPACES
TOTAL LANDSCAPE PROVIDED IN EXCESS	16 SPACES
TOTAL LANDSCAPE PROVIDED IN DEFICIT	0 SPACES

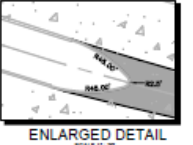
LEGEND

- GL EXISTING GRADE PALET
- GL EXISTING FIVE '6" PALET
- GL EXISTING CURB PALET
- FJA FIRE HYDRANT
- SPR BARBER FIRE PUMP
- ⊕ HATCH OF PARKING SPACES
- ⊞ REFERENCE NOTES THIS SHEET
- W.C. WATER CRAWLHOLE
- S.C. SANITARY SEWER EXISTENT

NOTE
ON SITE PERMITS TO MEET CURRENT CITY OF MCKINNEY STANDARDS, CONTRACTOR TO OBTAIN ALL NECESSARY PERMITS REQUIRED DURING CONSTRUCTION.

SITE LEGEND

1. PAINTED STOP BAR WITH STOP SIGN
2. ACCESSIBLE PARKING SPACE (TYP.)
3. PAINTED DIRECTIONAL ARROW (TYP.)
4. OVERHEAD SIGN LOCATION, REFERENCE ARCHITECTURAL PLANS FOR EXACT LOCATION
5. DO NOT ENTER SIGN
6. 4'-0" HIGH PAINTED WHITE CROSSWALK WITH 4" PAINTED WHITE STRIPING 2'-0" HIGH PARALLEL TO THE DIRECTION OF TRAFFIC
7. NIGHT SURF ONLY SIGN, SEE DETAIL SHEET
8. CONCRETE TRANSFORMER PAD BY LOCAL CONTRACTOR
9. PEDESTRIAN CROSSING SIGN
10. PARKING WHEEL STOP
11. TRANSITION CURB FOR 5.0' FROM 4" TO 6"
12. NO CURB
13. 4" RADIUS MEDIAN CURB REFER LANDSCAPE PLANS FOR LANDSCAPING DETAILS
14. THE RATED PEDESTRIAN WALKWAY FOR FIRE TRUCK ACCESS
15. REFERENCE EXISTING PAVED DRIVE WITHIN RE-PAVE AREA WITH TYPICAL CONCRETE PAVEMENT SECTION
16. 12'x6' LOADING SPACE



STOP!
CALL BEFORE YOU DIG
1-800-DIG-TESS
(at least 72 hours prior to digging)

CITY OF MCKINNEY NOTES

1. SANITATION CONTAINER STORING WASTE WILL BE BRICK MASONRY, STONE MASONRY, OR OTHER ARCHITECTURAL MASONRY TYPES, INCLUDING A REINFORCED CONCRETE FOUNDATION AND THE SANITATION CONTAINER STORING WALLS, GATE, AND PAD SITE WILL BE CONSTRUCTED IN ACCORDANCE WITH THE CITY'S DESIGN SPECIFICATIONS.
2. MECHANICAL AND HEATING AND AIR CONDITIONING EQUIPMENT IN NON-RESIDENTIAL USES SHALL BE SOURCED FROM NEW FROM THE PUBLIC RIGHT-OF-WAY AND FROM ADJACENT RESIDENTIAL PROPERTIES.
3. THE LOTTING FOR THE SUBJECT PROPERTY WILL BE CONSTRUCTED IN CONFORMANCE WITH CHAPTER 66 OF THE CITY OF MCKINNEY CODE OF ORDINANCES.

RECEIVED
By Kathy Wright at 8:47 am, Sep 16, 2013

Kathy-Horn and Associates, Inc.
ENGINEERS, ARCHITECTS, PLANNERS, AND LANDSCAPE ARCHITECTS
2700 AMARILLO DRIVE, SUITE 200, MCKINNEY, TX 75069
PHONE: 972-330-3900 FAX: 972-330-3778
WWW.KATHY-HORN.COM
TEAS REGISTERED ENGINEER #196 F-508

FOR REVIEW ONLY
Kathy-Horn and Associates, Inc.
2700 AMARILLO DRIVE, SUITE 200, MCKINNEY, TX 75069
PHONE: 972-330-3900 FAX: 972-330-3778
WWW.KATHY-HORN.COM
TEAS REGISTERED ENGINEER #196 F-508

GATEWAY HOTEL & EVENT CENTER
CITY OF MCKINNEY
COLLIN COUNTY, TEXAS

SITE PLAN

SHEET NUMBER
C-SP

Proposed Elevations



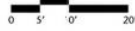
north elevation 1
50.5% masonry



north elevation 2
50.5% masonry



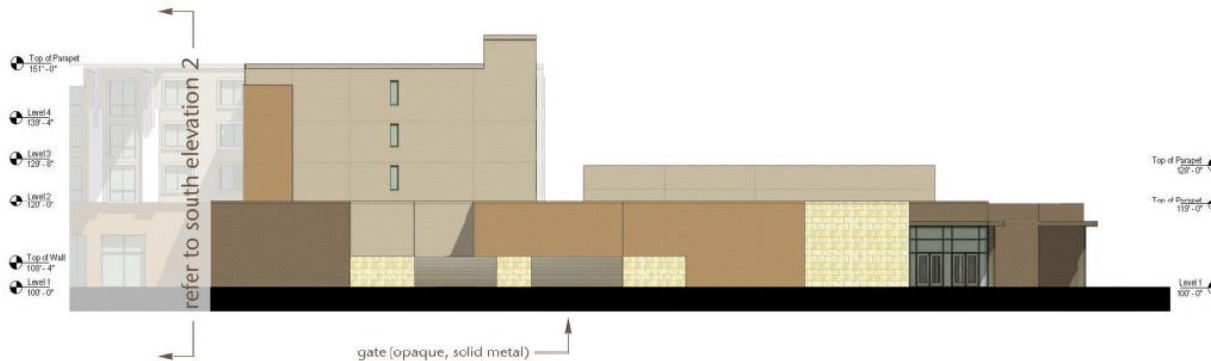
Proposed Elevations



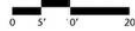
Proposed Elevations



south elevation 1
52.4% masonry



south elevation 3
52.4% masonry



Proposed Elevations



west elevation 2
52.7% masonry



east elevation 2
53.2% masonry



south elevation 2
50.4% masonry



Proposed Rendering



perspective 3

gateway hotel and event center
mckinney, texas

© three 2013
september 20, 2013

Proposed Rendering



perspective 4

gateway hotel and event center
mckinney, texas

© three 2013
september 20, 2013

Proposed Rendering



perspective 1

© three 2013
september 20, 2013

gateway hotel and event center
mckinney, texas

Proposed Rendering



perspective 2

gateway hotel and event center

mckinney, texas

© three 2013
september 20, 2013