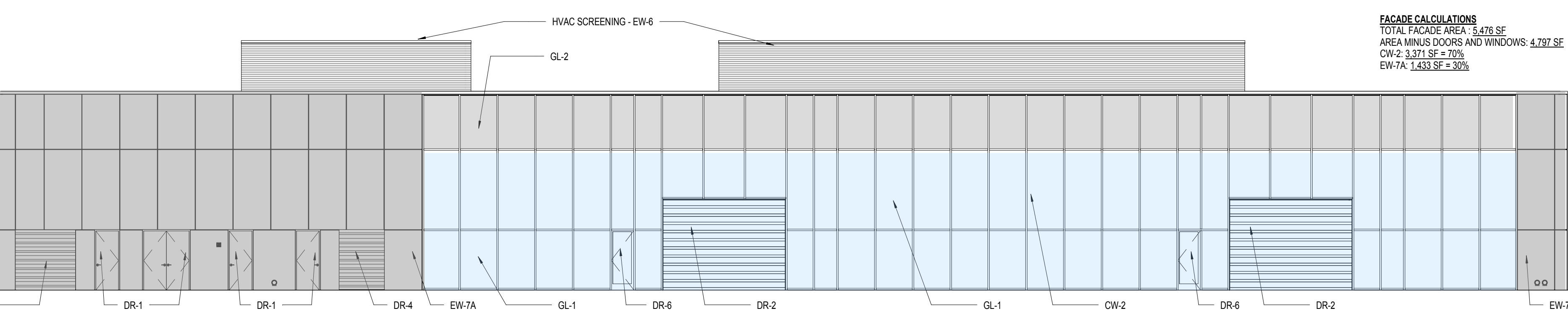


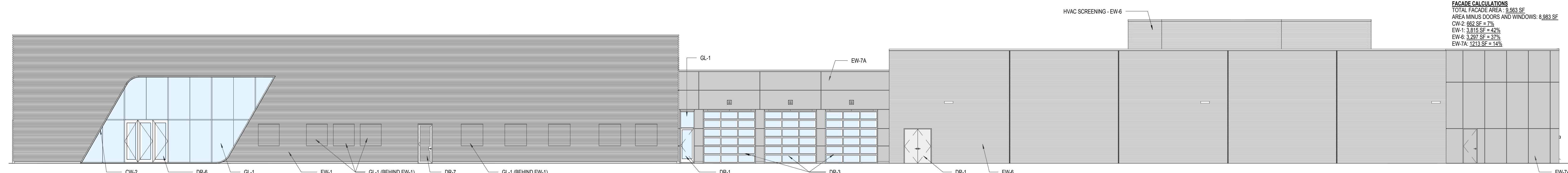
FACADE CALCULATIONS
 TOTAL FACADE AREA: 9,563 SF
 AREA MINUS DOORS AND WINDOWS: 8,320 SF
 CW-2: 482 SF = 5%
 EW-1: 3,294 SF = 40%
 EW-6: 3,153 SF = 38%
 EW-7A: 1411 SF = 17%

WEST ELEVATION - NEW SALES BLDG ELEVATIONS 4
 SCALE: 3/32" = 1'-0"



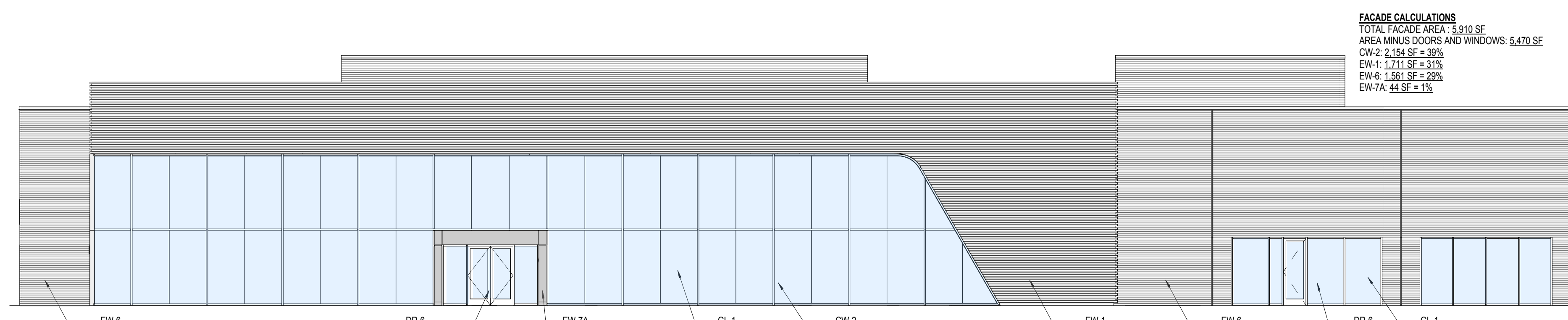
FACADE CALCULATIONS
 TOTAL FACADE AREA: 5,476 SF
 AREA MINUS DOORS AND WINDOWS: 4,797 SF
 CW-2: 3,371 SF = 70%
 EW-7A: 1,433 SF = 30%

NORTH ELEVATION - NEW SALES BLDG ELEVATIONS 3
 SCALE: 3/32" = 1'-0"



FACADE CALCULATIONS
 TOTAL FACADE AREA: 9,563 SF
 AREA MINUS DOORS AND WINDOWS: 8,983 SF
 CW-2: 682 SF = 7%
 EW-1: 3,815 SF = 42%
 EW-6: 3,287 SF = 37%
 EW-7A: 1213 SF = 14%

EAST ELEVATION - NEW SALES BLDG ELEVATIONS 2
 SCALE: 3/32" = 1'-0"



FACADE CALCULATIONS
 TOTAL FACADE AREA: 5,910 SF
 AREA MINUS DOORS AND WINDOWS: 5,470 SF
 CW-2: 2,154 SF = 39%
 EW-1: 1,711 SF = 31%
 EW-6: 1,581 SF = 28%
 EW-7A: 44 SF = 1%

SOUTH ELEVATION - NEW SALES BLDG ELEVATIONS 1
 SCALE: 3/32" = 1'-0"

GL-1 REFLECTANCE)	INSULATED GLASS PANEL (11% VISIBLE LIGHT SOLARBAN 60 ON LOW IRON GLASS	EW-17	SOLAR SCREEN: FABRIC FINISH: GREY
GL-2	INSULATED SPANDREL GLASS PANEL	EW-18	STEEL STRUCTURE FINISH: HOT DIPPED GALVANIZED
CW-2	CURTAIN WALL FRAMING CLEAR ANODIZED ALUMINUM	EW-19	ALUMINUM LOUVER FINISH: GREY
EW-1	PERFORATED CORRUGATED METAL PANEL SYSTEM CLEAR ANODIZED ALUMINUM	DR-1	HOLLOW METAL DOOR BRUSHED STAINLESS STEEL CLAD
EW-6	PREFINISHED CORRUGATED METAL PANEL SYSTEM COLOR: SILVERSMITH	DR-2	HIGH SPEED ROLL UP DOOR CLEAR ANODIZED ALUMINUM FRAME WITH CLEAR PLASTIC PANELS
EW-7A	ALUMINUM COMPOSITE PANEL COLOR: SILVERSMITH	DR-3	SECTIONAL OVERHEAD DOOR CLEAR ANODIZED ALUMINUM FRAME WITH CLEAR GLASS PANELS
EW-7B	ALUMINUM COMPOSITE PANEL COLOR: WHITE	DR-4	COILING OVERHEAD DOOR GRAY BAKED ENAMEL FINISH
EW-9	EXTERIOR PAINT COLOR: GRAY SHINGLE	DR-5	COILING OVERHEAD DOOR GALVANIZED STEEL FINISH
EW-14	MASONRY: SPLIT FACE CMU FINISH: GRAY GRANITE	DR-6	STOREFRONT DOOR CLEAR ANODIZED ALUMINUM FINISH WITH CLEAR GLASS
EW-15	MASONRY: SPLIT FACE CMU FINISH: SALT & PEPPER	DR-7	HOLLOW METAL DOOR CLAD W/ CORRUGATED PERFORATED METAL PANEL OVERLAY FINISH: BRUSHED STAINLESS STEEL
EW-16	STANDING SEAM METAL ROOF FINISH: BERRIDGE NATURAL WHITE	DR-8	HOLLOW METAL DOOR FINISH: PAINT EW-7B

NOTE: FACADE CALCULATIONS DO NOT INCLUDE HVAC SCREENING

EXTERIOR FINISH LIST
 SCALE: 6" = 1'-0"

Building Permit Copy
 Approved by the Planning Department
 09/14/2015 2:46:34 PM by: abloxham

Ted Kollaja #13842
 REGISTERED ARCHITECT
 STATE OF TEXAS
 13842
 09/10/2015

As indicated

AUDI OF MCKINNEY

Gensler

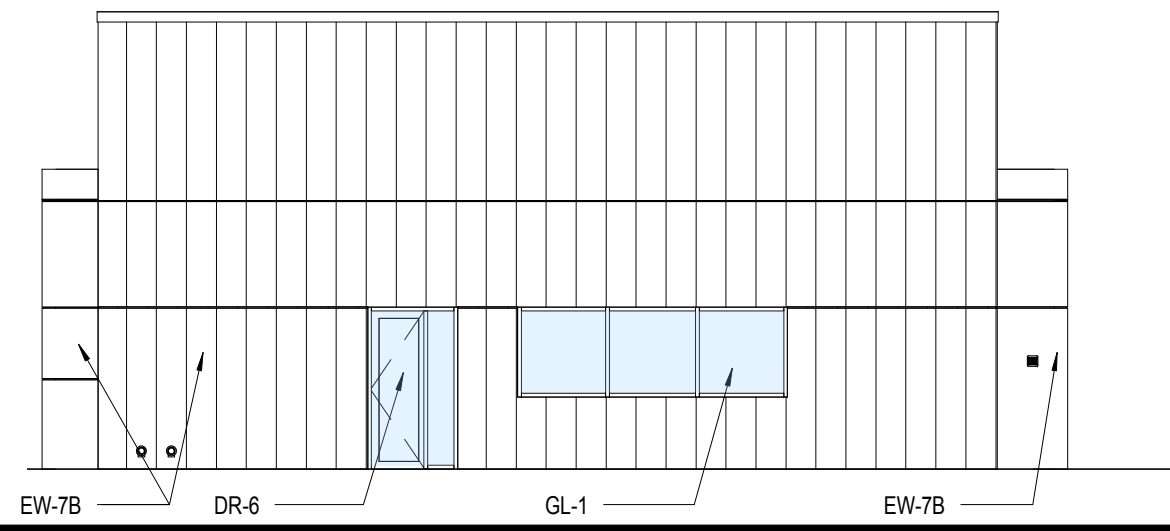
A02 - COLOR EXTERIOR ELEVATIONS - FACADE PLAN REVIEW

RECEIVED
 By Planning Department at 2:16 pm, Sep 10, 2015

09/10/2015

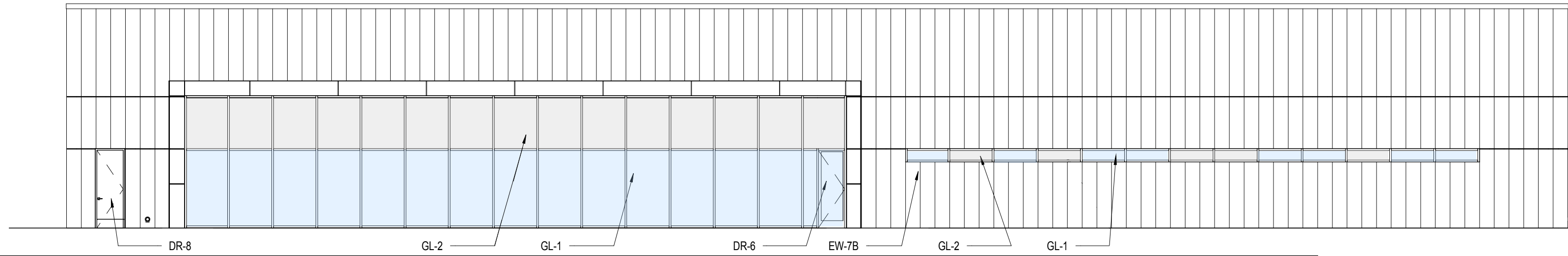
© 2015 Gensler

FACADE CALCULATIONS
 TOTAL FACADE AREA: 1,388 SF
 AREA MINUS DOORS AND WINDOWS: 1,269 SF
 EW-7B: 1,269 SF = 100%



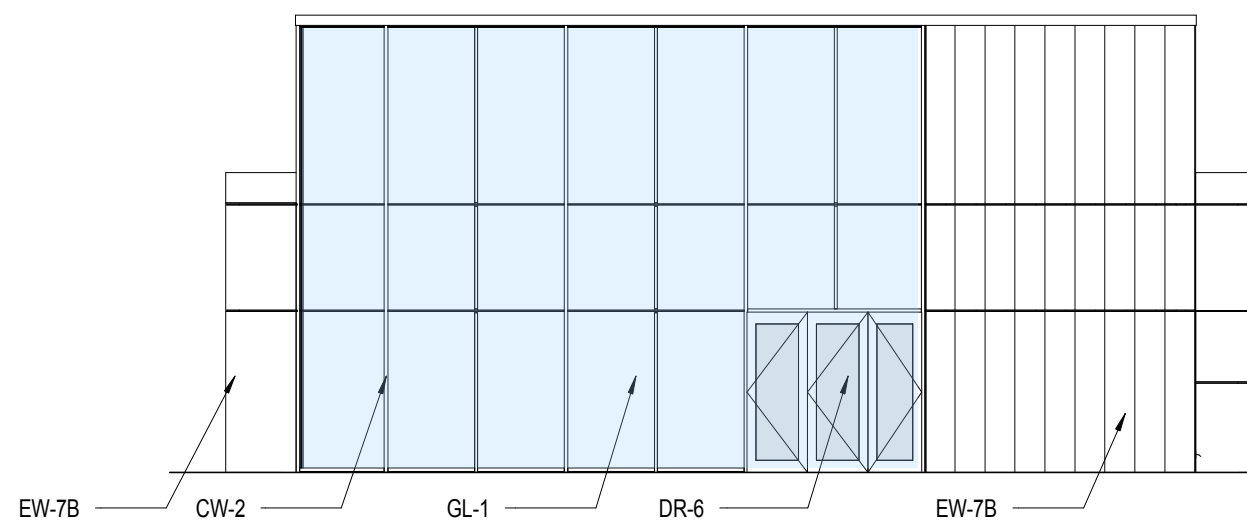
WEST ELEVATION - PREOWNED SALES BLDG ELEVATIONS **4**
 SCALE: 3/32" = 1'-0"

FACADE CALCULATIONS
 TOTAL FACADE AREA: 4,324 SF
 AREA MINUS DOORS AND WINDOWS: 4,166 SF
 CW-1: 1,094 SF = 26%
 EW-7B: 3,072 SF = 74%



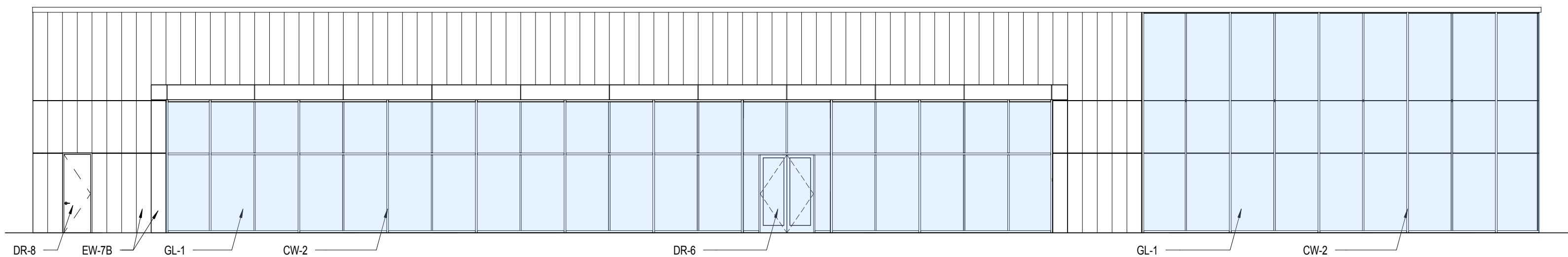
NORTH ELEVATION - PREOWNED SALES BLDG ELEVATIONS **3**
 SCALE: 3/32" = 1'-0"

FACADE CALCULATIONS
 TOTAL FACADE AREA: 1,388 SF
 AREA MINUS DOORS AND WINDOWS: 1,300 SF
 EW-7B: 518 SF = 40%
 CW-2: 782 SF = 60%



EAST ELEVATION - PREOWNED SALES BLDG ELEVATIONS **2**
 SCALE: 3/32" = 1'-0"

FACADE CALCULATIONS
 TOTAL FACADE AREA: 4,324 SF
 AREA MINUS DOORS AND WINDOWS: 4,208 SF
 EW-7B: 1,681 SF = 40%
 CW-2: 2,527 SF = 60%

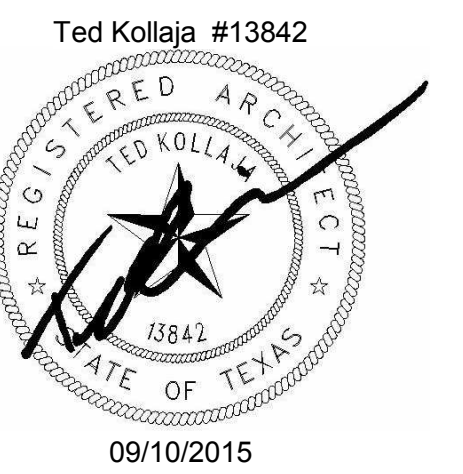


SOUTH ELEVATION - PREOWNED SALES BLDG ELEVATIONS **1**
 SCALE: 3/32" = 1'-0"

GL-1	INSULATED GLASS PANEL (11% VISIBLE LIGHT REFLECTANCE) SOLARBAN 60 ON LOW IRON GLASS	EW-17	SOLAR SCREEN: FABRIC FINISH: GREY
GL-2	INSULATED SPANDREL GLASS PANEL	EW-18	STEEL STRUCTURE FINISH: HOT DIPPED GALVANIZED
CW-2	CURTAIN WALL FRAMING CLEAR ANODIZED ALUMINUM	EW-19	ALUMINUM LOUVER FINISH: GREY
EW-1	PERFORATED CORRUGATED METAL PANEL SYSTEM CLEAR ANODIZED ALUMINUM	DR-1	HOLLOW METAL DOOR BRUSHED STAINLESS STEEL CLAD
EW-6	PREFINISHED CORRUGATED METAL PANEL SYSTEM FINISH: SILVERSMITH	DR-2	HIGH SPEED ROLL UP DOOR CLEAR ANODIZED ALUMINUM FRAME WITH CLEAR PLASTIC PANELS
EW-7A	ALUMINUM COMPOSITE PANEL COLOR: SILVERSMITH	DR-3	SECTIONAL OVERHEAD DOOR CLEAR ANODIZED ALUMINUM FRAME WITH CLEAR GLASS PANELS
EW-7B	ALUMINUM COMPOSITE PANEL COLOR: WHITE	DR-4	COILING OVERHEAD DOOR GRAY BAKED ENAMEL FINISH
EW-9	EXTERIOR PAINT COLOR: GRAY SHINGLE	DR-5	COILING OVERHEAD DOOR GALVANIZED STEEL FINISH
EW-14	MASONRY: SPLIT FACE CMU FINISH: GRAY GRANITE	DR-6	STOREFRONT DOOR CLEAR ANODIZED ALUMINUM FINISH WITH CLEAR GLASS
EW-15	MASONRY: SPLIT FACE CMU FINISH: SALT & PEPPER	DR-7	HOLLOW METAL DOOR CLAD W/ CORRUGATED PERFORATED METAL PANEL OVERLAY FINISH: BRUSHED STAINLESS STEEL
EW-16	STANDING SEAM METAL ROOF FINISH: BERRIDGE NATURAL WHITE	DR-8	HOLLOW METAL DOOR FINISH: PAINT EW-7B

EXTERIOR FINISH LIST
 SCALE: 6" = 1'-0"

Building Permit Copy
 Approved by the Planning Department
 09/14/2015 2:46:42 PM by: abloxham



As indicated

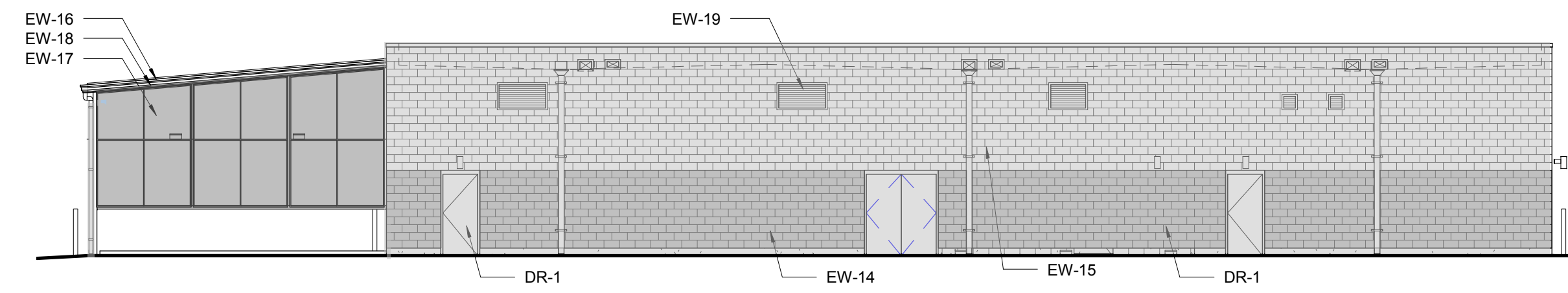
AUDI OF MCKINNEY

A03 - COLOR EXTERIOR ELEVATIONS - FACADE PLAN REVIEW

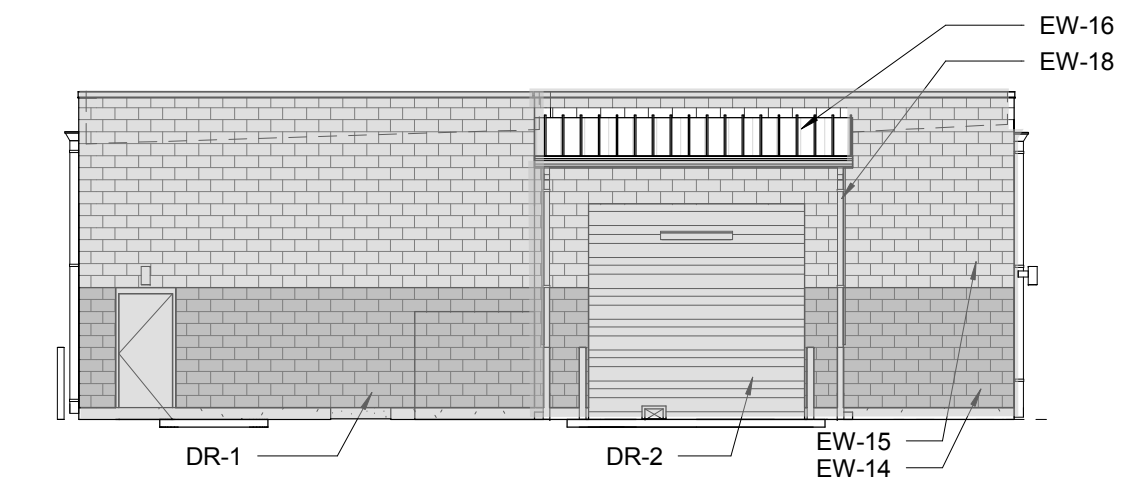
Gensler

RECEIVED
 By Planning Department at 2:16 pm, Sep 10, 2015

09/10/2015



FACADE CALCULATIONS
 TOTAL FACADE AREA: 2124 SF
 AREA MINUS DOORS AND WINDOWS: 2029 SF
 EW-14: 639 SF = 31%
 EW-15: 1058 SF = 52%
 EW-16: 20 SF = 1%
 EW-17: 265 SF = 13%
 EW-18: 15 SF = 1%
 EW-19: 32 SF = 2%



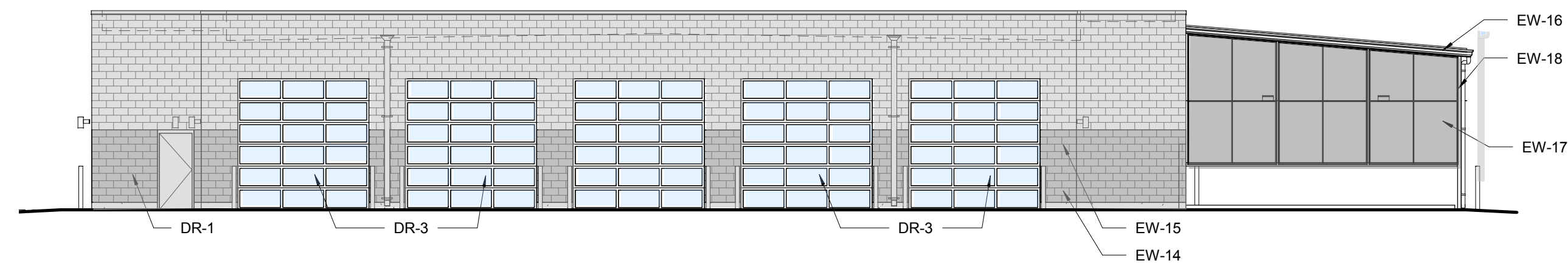
FACADE CALCULATIONS
 TOTAL FACADE AREA: 948 SF
 AREA MINUS DOORS AND WINDOWS: 782 SF
 EW-14: 238 SF = 30%
 EW-15: 485 SF = 62%
 EW-16: 49 SF = 7%
 EW-18: 10 SF = 1%

NORTH ELEVATION - CARWASH BLDG ELEVATIONS

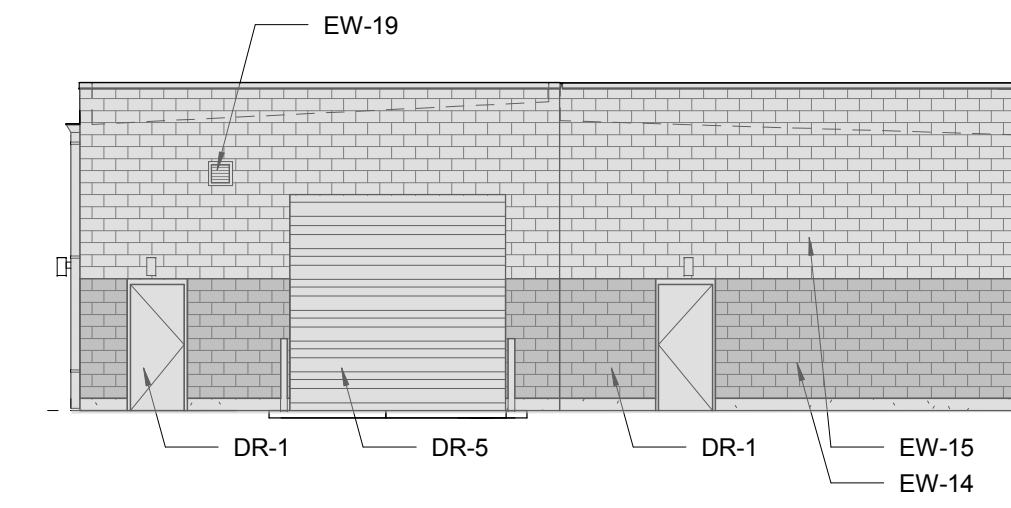
SCALE: 3/32" = 1'-0"

8 EAST ELEVATION - CARWASH BLDG ELEVATIONS 7

SCALE: 3/32" = 1'-0"



FACADE CALCULATIONS
 TOTAL FACADE AREA: 2124 SF
 AREA MINUS DOORS AND WINDOWS: 1379 SF
 EW-14: 269 SF = 20%
 EW-15: 808 SF = 59%
 EW-16: 21 SF = 2%
 EW-17: 265 SF = 18%
 EW-18: 16 SF = 1%



FACADE CALCULATIONS
 TOTAL FACADE AREA: 948 SF
 AREA MINUS DOORS AND WINDOWS: 754 SF
 EW-14: 222 SF = 29%
 EW-15: 530 SF = 70%
 EW-19: 2 SF = 1%

Building Permit Copy

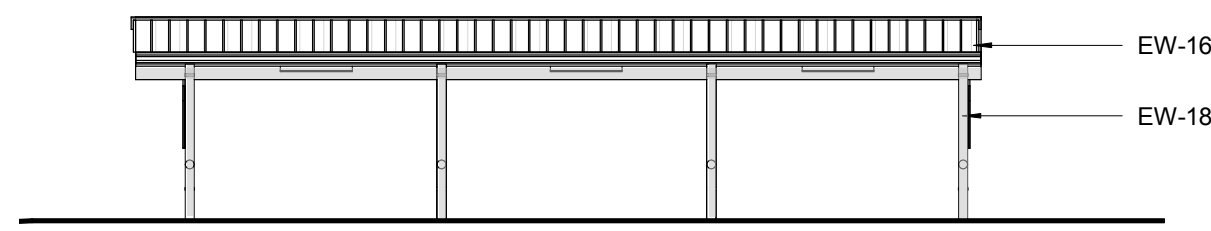
Approved by the Planning Department
 09/14/2015 2:46:42 PM by: abloxham

SOUTH ELEVATION - CARWASH BLDG ELEVATIONS

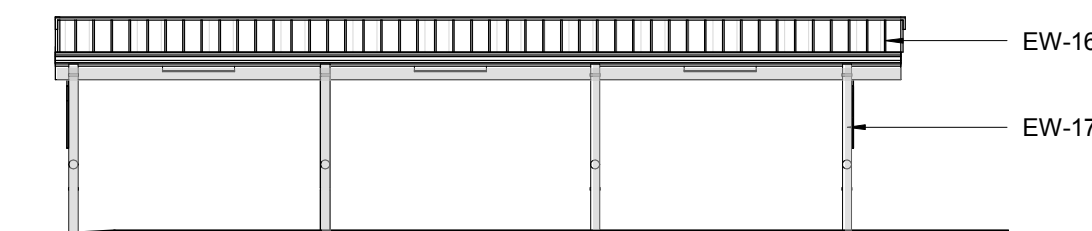
SCALE: 3/32" = 1'-0"

5 WEST ELEVATION - CARWASH BLDG ELEVATIONS 6

SCALE: 3/32" = 1'-0"



FACADE CALCULATIONS
 TOTAL FACADE AREA: 182 SF
 AREA MINUS DOORS AND WINDOWS: 182 SF
 EW-16: 124 SF = 68%
 EW-18: 58 SF = 32%



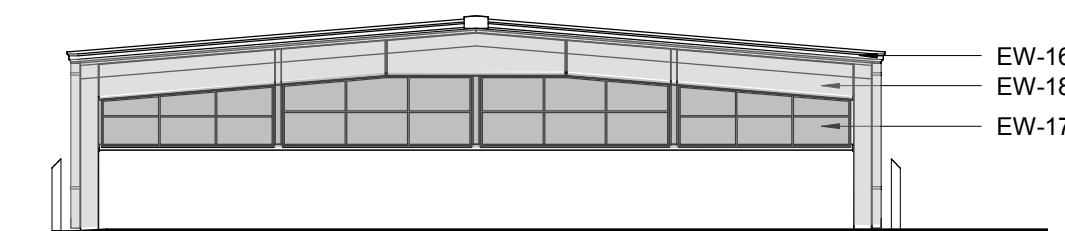
FACADE CALCULATIONS
 TOTAL FACADE AREA: 182 SF
 AREA MINUS DOORS AND WINDOWS: 182 SF
 EW-16: 124 SF = 68%
 EW-18: 58 SF = 32%

EAST ELEVATION - VACUUM CANOPY1

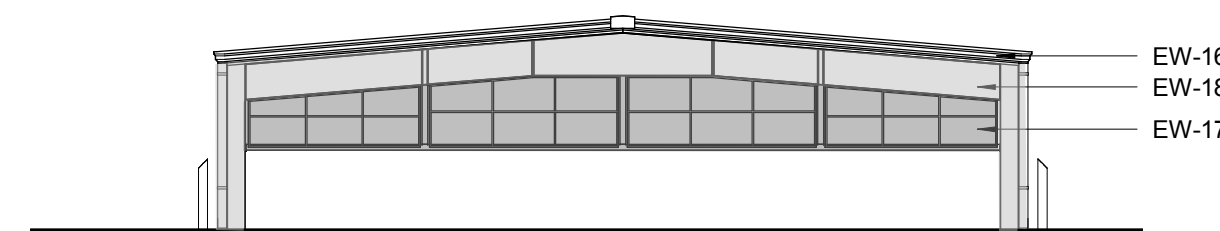
SCALE: 3/32" = 1'-0"

3 WEST ELEVATION - VACUUM CANOPY 4

SCALE: 3/32" = 1'-0"



FACADE CALCULATIONS
 TOTAL FACADE AREA: 293 SF
 AREA MINUS DOORS AND WINDOWS: 293 SF
 EW-16: 38 SF = 13%
 EW-17: 138 SF = 47%
 EW-18: 117 SF = 40%



FACADE CALCULATIONS
 TOTAL FACADE AREA: 293 SF
 AREA MINUS DOORS AND WINDOWS: 293 SF
 EW-16: 38 SF = 13%
 EW-17: 138 SF = 47%
 EW-18: 117 SF = 40%

SOUTH ELEVATION - VACUUM CANOPY

SCALE: 3/32" = 1'-0"

1 NORTH ELEVATION - VACUUM CANOPY 2

SCALE: 3/32" = 1'-0"

- GL-1 INSULATED GLASS PANEL (11% VISIBLE LIGHT REFLECTANCE)
SOLARBAN 60 ON LOW IRON GLASS
- GL-2 INSULATED SPANDREL GLASS PANEL
- CW-2 CURTAIN WALL FRAMING
CLEAR ANODIZED ALUMINUM
- EW-1 PERFORATED CORRUGATED METAL PANEL SYSTEM
CLEAR ANODIZED ALUMINUM
- EW-6 PREFINISHED CORRUGATED METAL PANEL SYSTEM
FINISH: SILVERSMITH
- EW-7A ALUMINUM COMPOSITE PANEL
COLOR: SILVERSMITH
- EW-7B ALUMINUM COMPOSITE PANEL
COLOR: WHITE
- EW-9 EXTERIOR PAINT
COLOR: GRAY SHINGLE
- EW-14 MASONRY: SPLIT FACE CMU
FINISH: GRAY GRANITE
- EW-15 MASONRY: SPLIT FACE CMU
FINISH: SALT & PEPPER
- EW-16 STANDING SEAM METAL ROOF
FINISH: BERRIDGE NATURAL WHITE
- EW-17 SOLAR SCREEN: FABRIC
FINISH: GREY
- EW-18 STEEL STRUCTURE
FINISH: HOT DIPPED GALVANIZED
- EW-19 ALUMINUM LOUVER
FINISH: GREY
- DR-1 HOLLOW METAL DOOR
BRUSHED STAINLESS STEEL CLAD
- DR-2 HIGH SPEED ROLL UP DOOR
CLEAR ANODIZED ALUMINUM FRAME WITH CLEAR PLASTIC PANELS
- DR-3 SECTIONAL OVERHEAD DOOR
CLEAR ANODIZED ALUMINUM FRAME WITH CLEAR GLASS PANELS
- DR-4 COILING OVERHEAD DOOR
GRAY BAKED ENAMEL FINISH
- DR-5 COILING OVERHEAD DOOR
GALVANIZED STEEL FINISH
- DR-6 STOREFRONT DOOR
CLEAR ANODIZED ALUMINUM FINISH WITH CLEAR GLASS
- DR-7 HOLLOW METAL DOOR CLAD W/ CORRUGATED PERFORATED METAL PANEL OVERLAY
FINISH: BRUSHED STAINLESS STEEL
- DR-8 HOLLOW METAL DOOR
FINISH: PAINT EW-7B

EXTERIOR FINISH LIST

SCALE: 6" = 1'-0"

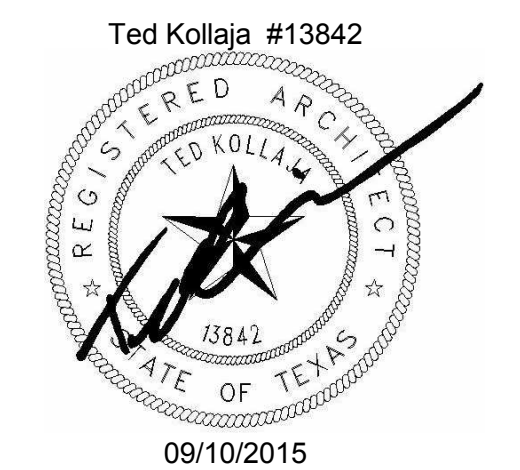
As indicated

AUDI of McKinney

Gensler

A04 - COLOR EXTERIOR ELEVATIONS - CAR WASH

RECEIVED
 By Planning Department at 2:17 pm, Sep 10, 2015



09/10/2015