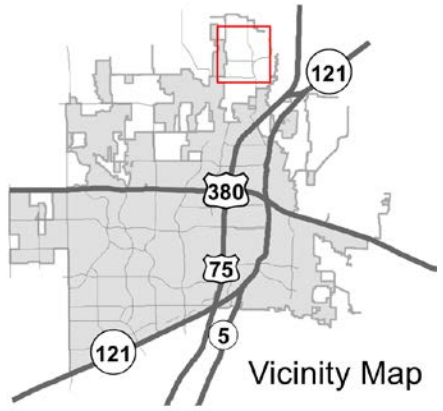
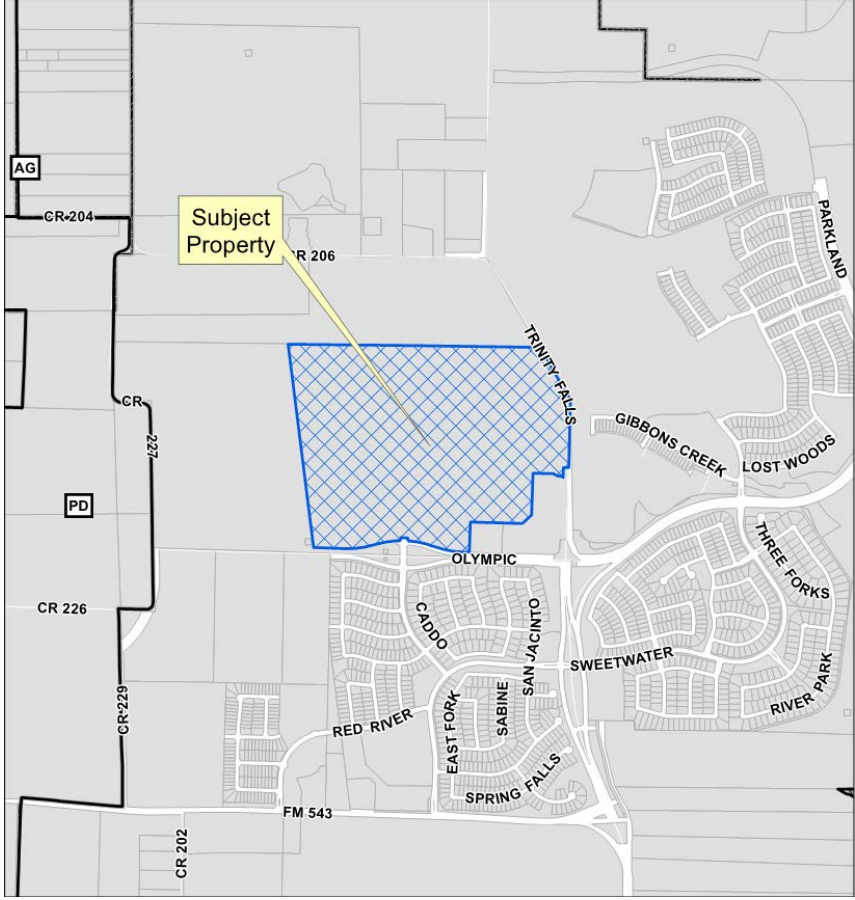


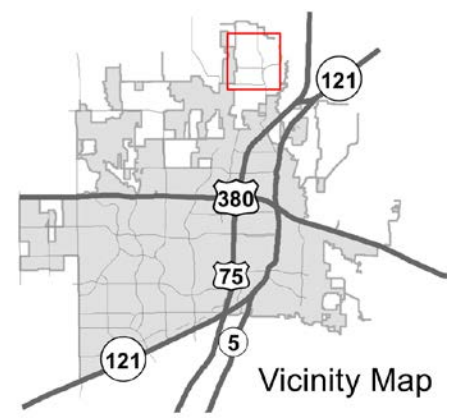
Trinity Falls PU 7 Preliminary- Final Plat

19-0170Z

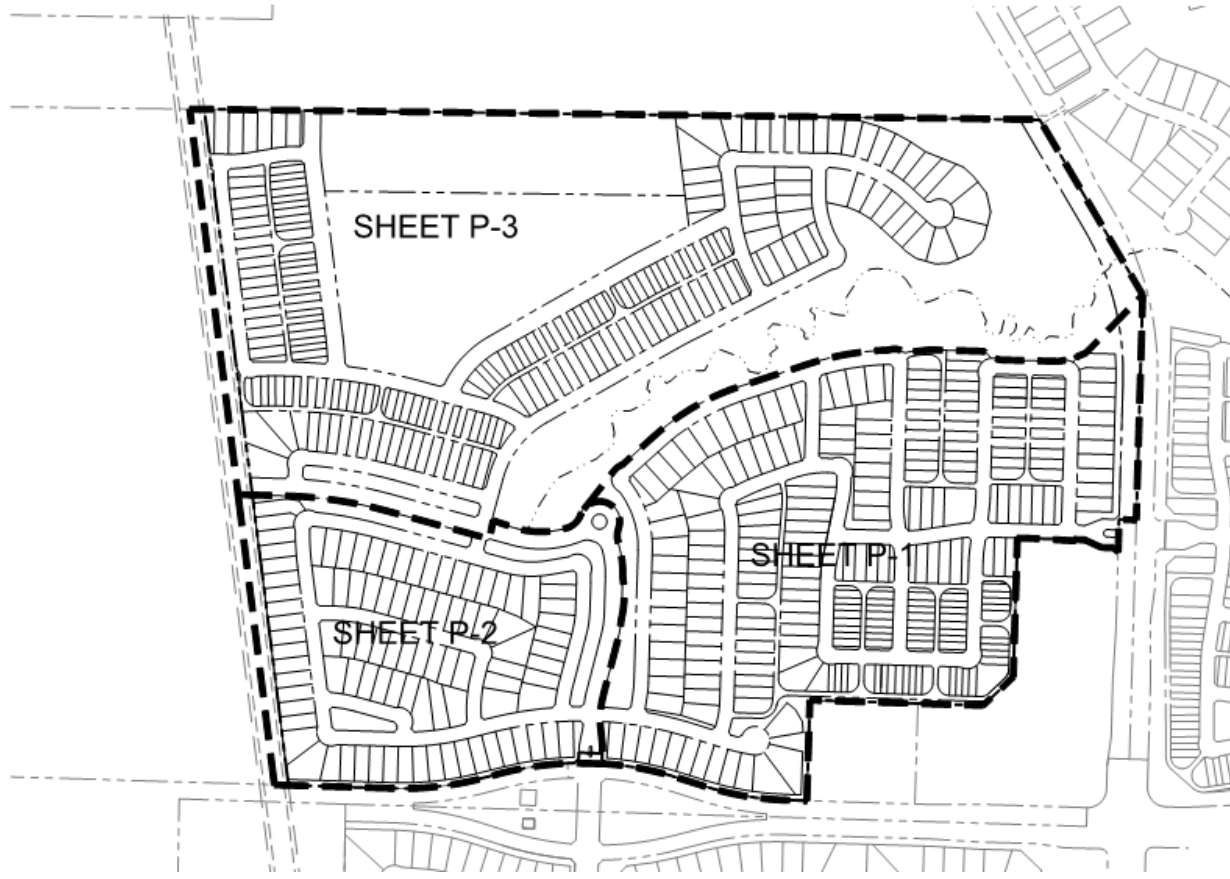
Location Map



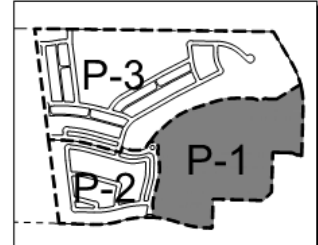
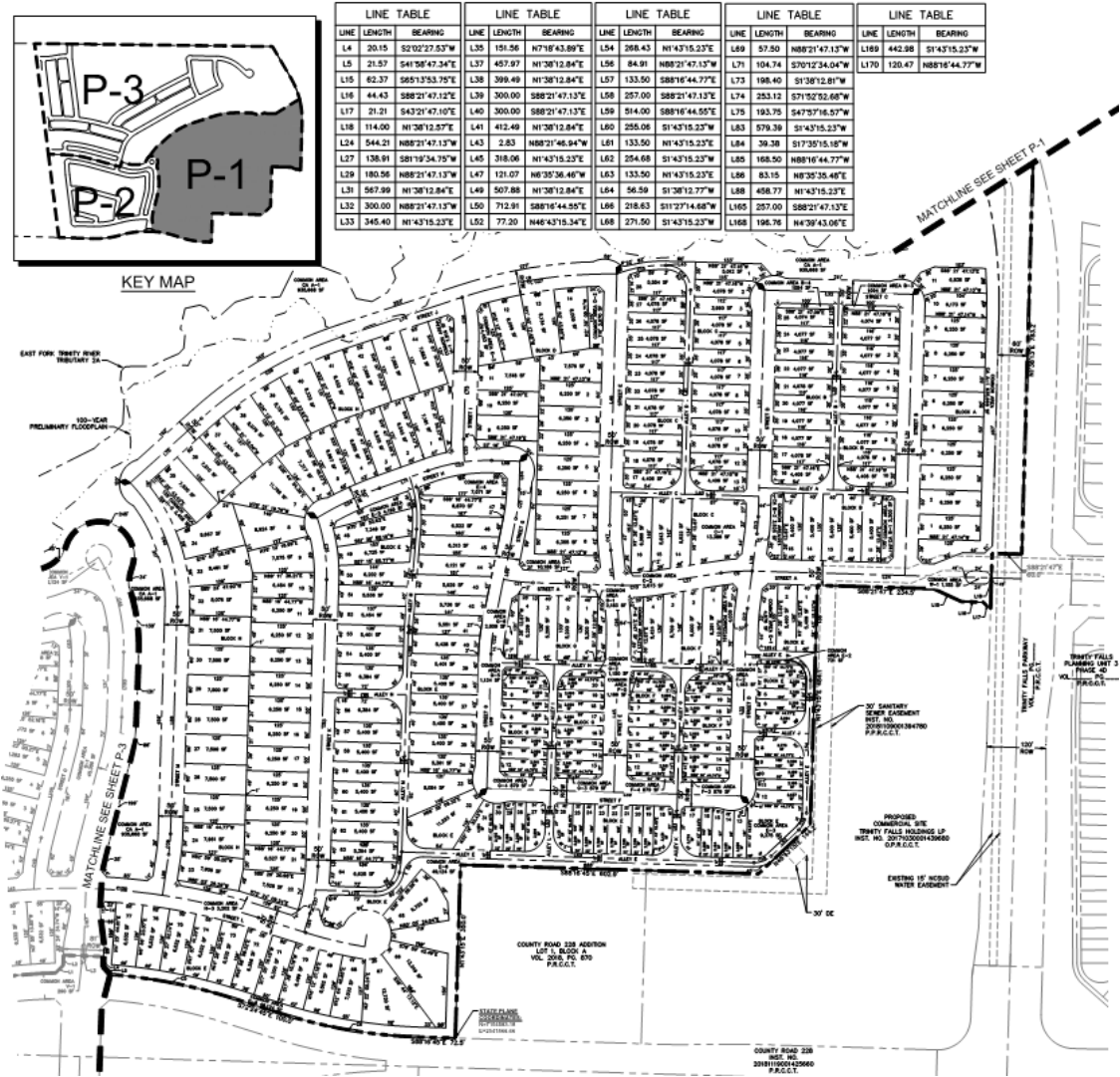
Aerial Exhibit



Proposed Preliminary-Final Plat



Proposed Preliminary-Final Plat



KEY MAP

LINE TABLE			LINE TABLE			LINE TABLE			LINE TABLE			LINE TABLE		
LINE	LENGTH	BEARING	LINE	LENGTH	BEARING	LINE	LENGTH	BEARING	LINE	LENGTH	BEARING	LINE	LENGTH	BEARING
L4	201.15	S202°27'53"W	L35	131.36	N7°16'43.89"E	L54	208.43	N1°43'15.23"E	L69	57.50	N89°21'47.13"W	L169	442.88	S1°43'15.23"W
L5	21.37	S41°13'51.24"E	L37	457.97	N1°30'13.84"E	L56	84.91	N89°21'47.13"W	L71	104.74	S70°12'34.04"W	L170	120.47	N89°16'44.77"W
L15	62.37	S65°13'51.24"E	L39	399.49	N1°30'13.84"E	L57	133.50	S89°16'44.77"E	L73	196.40	S1°38'12.81"W			
L16	44.43	S89°21'47.13"E	L39	300.00	S89°21'47.13"E	L58	257.00	S89°21'47.13"E	L74	253.12	S71°52'32.68"W			
L17	21.21	S43°21'47.10"E	L40	300.00	S89°21'47.13"E	L59	814.00	S89°16'44.52"E	L75	193.79	S47°57'16.57"W			
L18	114.00	N1°38'13.57"E	L41	412.49	N1°30'13.84"E	L60	255.06	S1°43'15.23"W	L83	579.28	S1°43'15.23"W			
L54	544.21	N89°21'47.13"W	L43	2.83	N89°21'46.94"W	L61	133.50	N1°43'15.23"E	L84	39.28	S17°35'15.19"W			
L17	126.91	S81°16'34.75"W	L45	318.06	N1°43'15.23"E	L62	254.68	S1°43'15.23"W	L85	168.50	N89°16'44.77"W			
L39	180.56	N89°21'47.13"W	L47	121.07	N63°35'36.46"W	L63	133.50	N1°43'15.23"E	L86	83.15	N63°35'36.46"E			
L31	567.99	N1°38'13.57"E	L49	507.88	N1°30'13.84"E	L64	54.59	S1°20'12.77"W	L88	458.77	N1°43'15.23"E			
L32	300.00	N89°21'47.13"W	L50	712.91	S89°16'44.52"E	L66	216.63	S11°27'14.68"W	L105	257.00	S89°21'47.13"E			
L33	345.40	N1°43'15.23"E	L52	77.20	N46°43'15.34"E	L68	271.50	S1°43'15.23"W	L168	196.78	N4°39'43.08"E			

MATCHLINE SEE SHEET P-1

MATCHLINE SEE SHEET P-3

PROPOSED
COMMERCIAL SITE
STONEY FALLS HOLDING LP
HOLDING NO. 2017-00000000000000000000
PROJECT

COUNTY ROAD 228
ADDN
HOLDING NO. 2017-00000000000000000000
PROJECT

Proposed Preliminary-Final Plat

