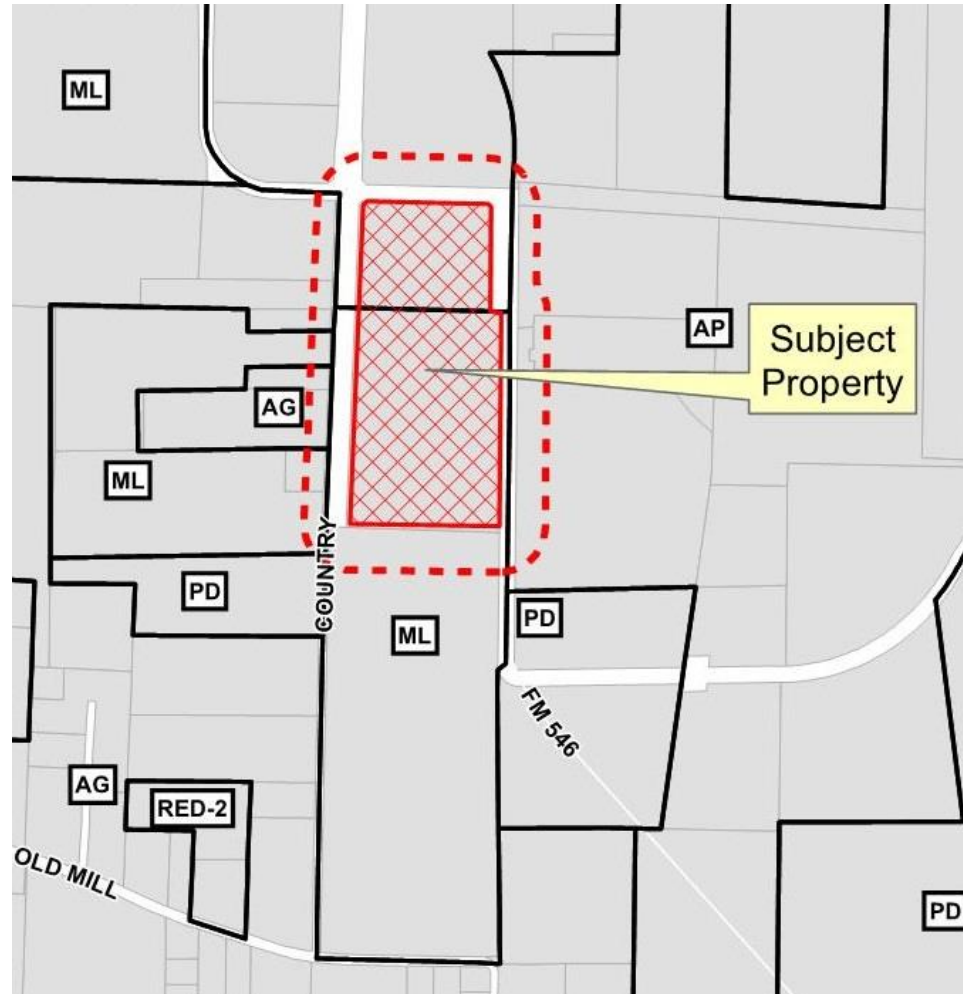


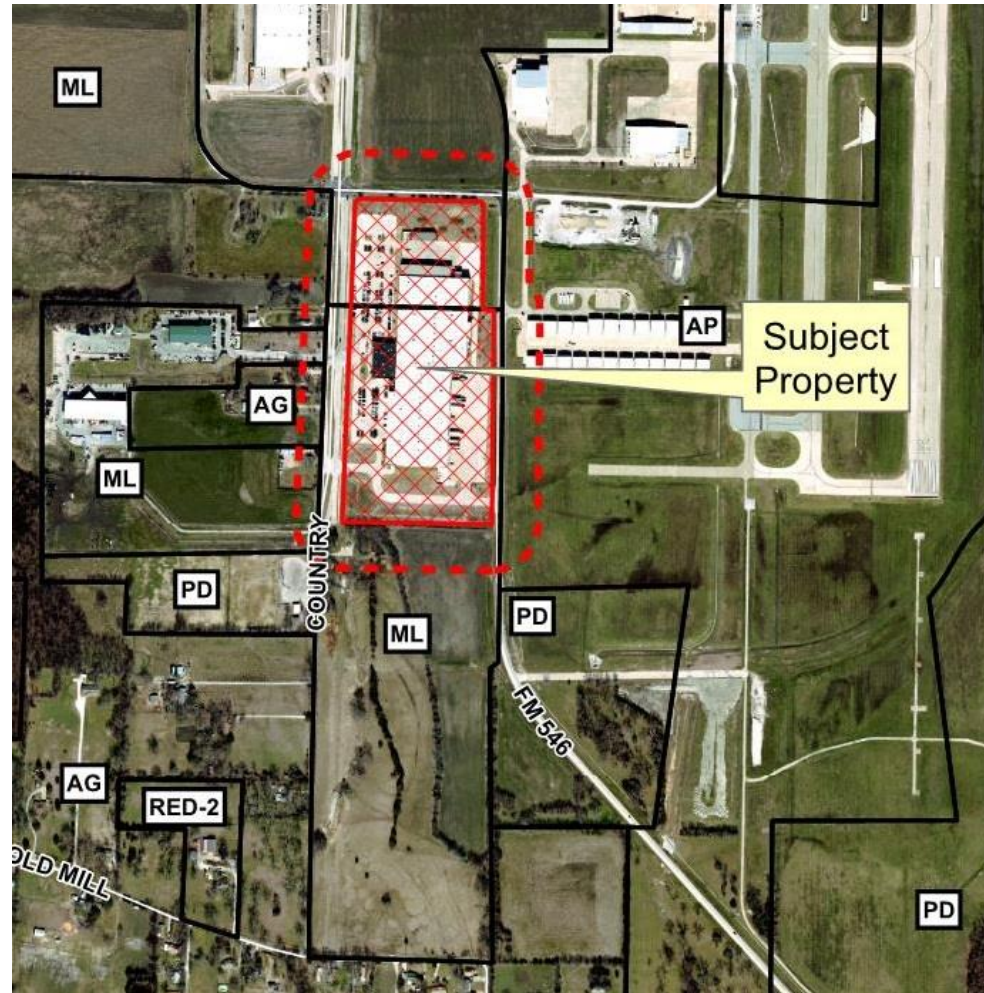
Simpson Strong-Tie  
Expansion  
Façade Plan Appeal  
16-252FR



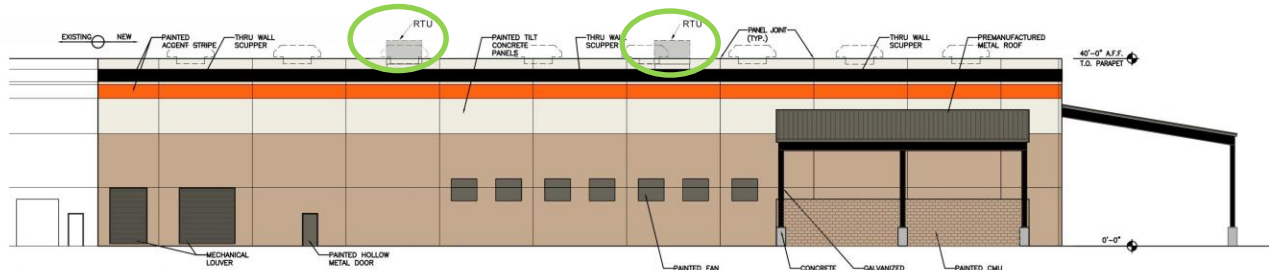
# Location Map



# Aerial Exhibit



# Proposed Elevations

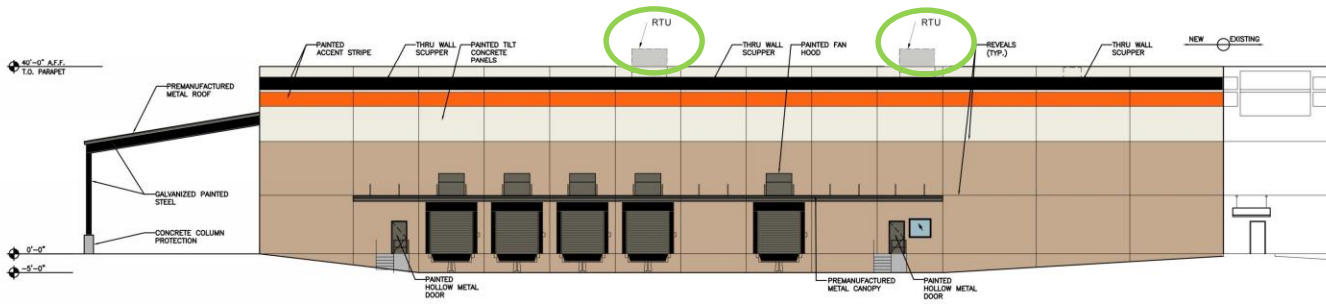


EXPANSION 'A'						
MATERIAL	SOUTH	PERCENT	EAST	PERCENT	WEST	PERCENT
PAINTED TILT PANEL (COLOR 1)	3044.1 SF	27.1%	2128.7 SF	28.2%	2129 SF	27.6%
PAINTED TILT PANEL (COLOR 2)	2026.7 SF	57.6%	853.3 SF	59.4%	839.8 SF	57%
PAINTED TILT PANEL (COLOR 3)	691.1 SF	7.8%	618 SF	7.8%	617.9 SF	8%
PAINTED TILT PANEL (COLOR 4)	791.9 SF	7.1%	549.3 SF	6.8%	549.3 SF	7.2%
TOTAL	11233.859		8129.8 SF		7665.8 SF	
OPENINGS	646.1 SF	5.4%	761.6 SF	6.6%	574.4 SF	7%
TOTAL	11879.958		8891.1 SF		8240.2 SF	

\*NOTE: PAINT COLORS TO MATCH EXISTING

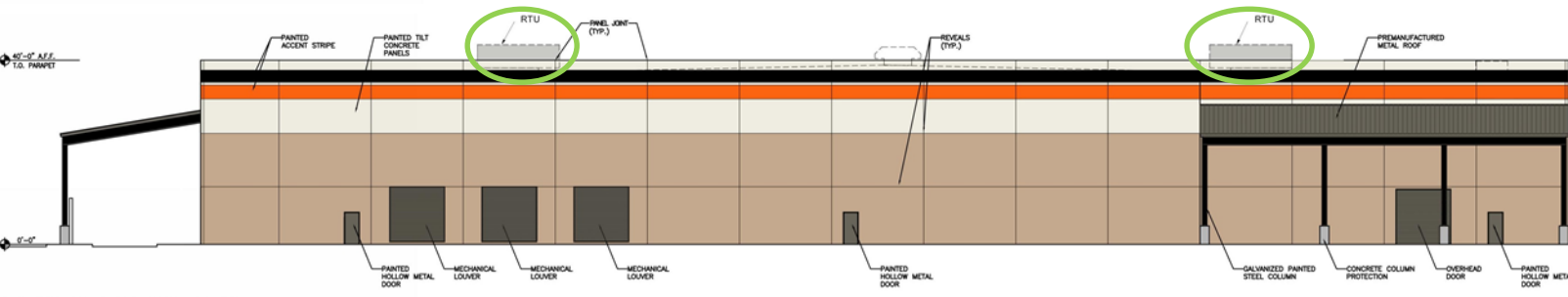
**WEST ELEVATION**

SCALE: 1"=10'-0"



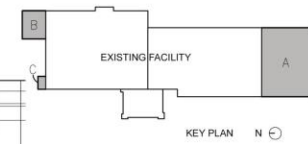
**EAST ELEVATION**

SCALE: 1"=10'-0"



**SOUTH ELEVATION**

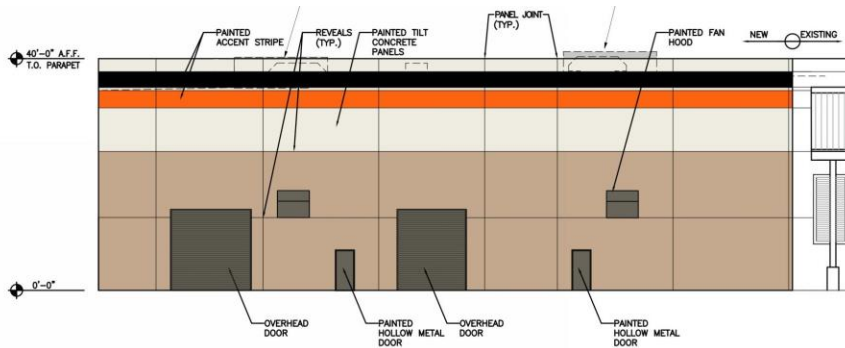
SCALE: 1"=10'-0"



SIMPSON STRONG TIE PHASE 3  
SITE PLAN CASE: 2016 - 252 SP

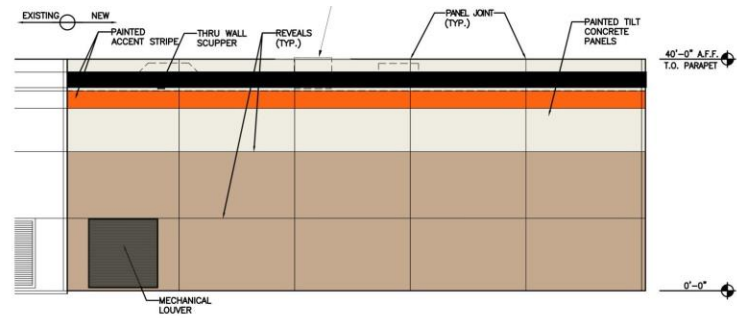
OWNER	SIMPSON STRONG TIE 2221 COUNTRY LANE MCKINNEY, TEXAS 75069
ARCHITECT	ROUGH ARCHITECTS 1701 NORTH MARKET ST. #200 DALLAS, TEXAS 75202

# Proposed Elevations



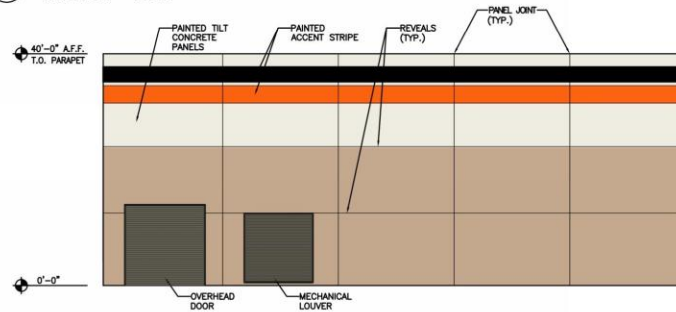
**NORTH ELEVATION**

SCALE: 1" = 10'-0"



**EAST ELEVATION**

SCALE: 1" = 10'-0"



**WEST ELEVATION**

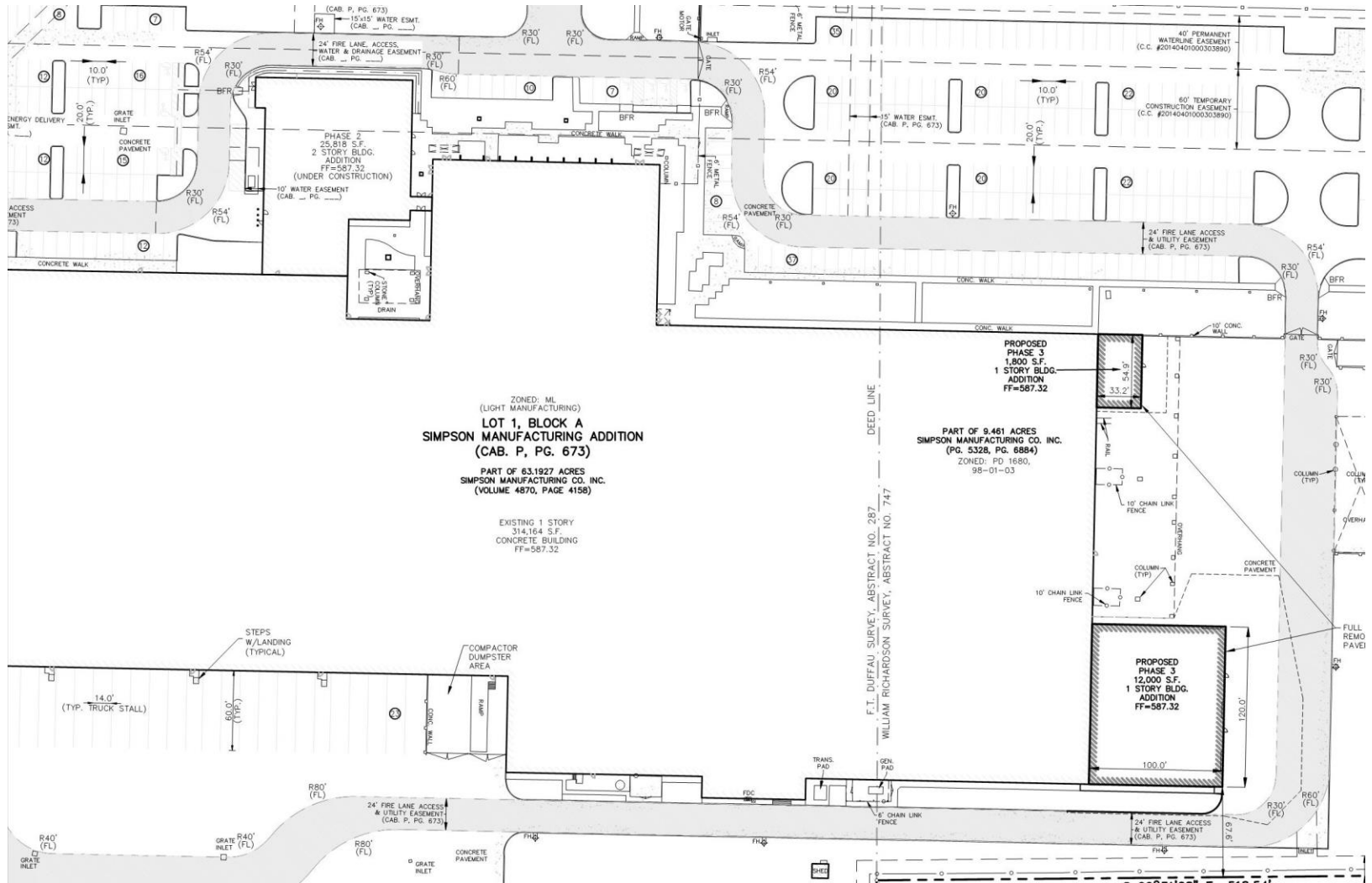
SCALE: 1" = 10'-0"

EXPANSION 'B'						
MATERIAL	NORTH	PERCENT	EAST	PERCENT	WEST	PERCENT
PAINTED TILT PANEL (COLOR 1)	1240 SF	29.1%	1033.3 SF	26.8%	1033.3 SF	28.2%
PAINTED TILT PANEL (COLOR 2)	2338 SF	54.9%	2256 SF	58.5%	2060 SF	56.3%
PAINTED TILT PANEL (COLOR 3)	360 SF	8.5%	300 SF	7.8%	300 SF	8.2%
PAINTED TILT PANEL (COLOR 4)	319.9 SF	7.5%	266.7 SF	6.9%	266.7 SF	7.3%
TOTAL	4257.9 SF		3856 SF		3660 SF	
OPENINGS	462 SF	9.8%	144 SF	3.6%	340 SF	8.5%
TOTAL	4719.9 SF		4000 SF		4000 SF	

\*NOTE: PAINT COLORS TO MATCH EXISTING



# Approved Site Plan



ZONED: M1  
(LIGHT MANUFACTURING)  
**LOT 1, BLOCK A**  
**SIMPSON MANUFACTURING ADDITION**  
(CAB. P, PG. 673)  
PART OF 63.1927 ACRES  
SIMPSON MANUFACTURING CO. INC.  
(VOLUME 4870, PAGE 4158)

EXISTING 1 STORY  
314,164 S.F.  
CONCRETE BUILDING  
FF=587.32

**PROPOSED**  
**PHASE 3**  
**1,800 S.F.**  
**1 STORY BLDG.**  
**ADDITION**  
**FF=587.32**

**PROPOSED**  
**PHASE 3**  
**12,000 S.F.**  
**1 STORY BLDG.**  
**ADDITION**  
**FF=587.32**

DEED LINE  
F.I. DUFFAU SURVEY, ABSTRACT NO. 287  
WILLIAM RICHARDSON SURVEY, ABSTRACT NO. 747

FULL REMO PAVEMENT



