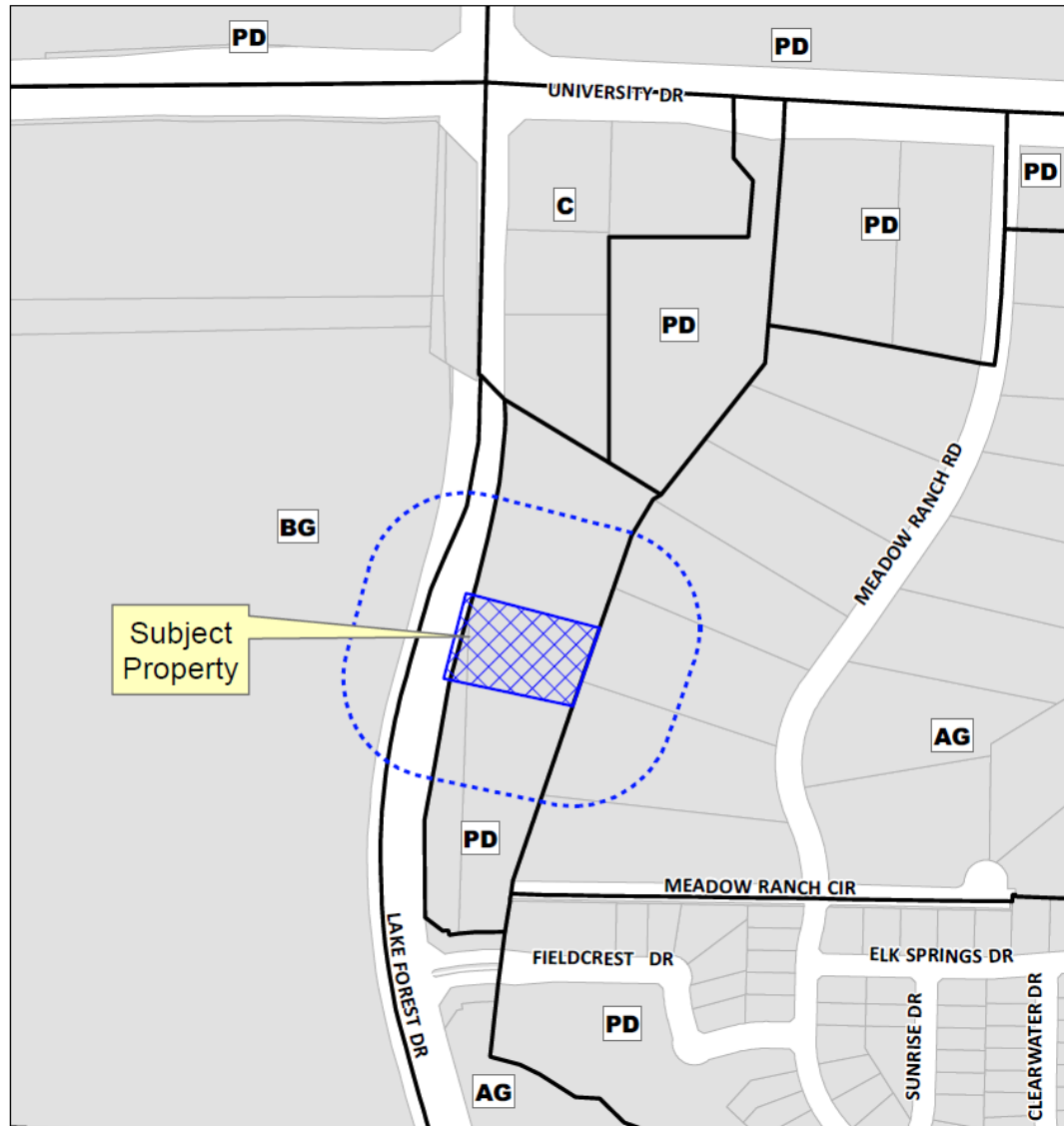


**Case No. 13-048Z**  
**Craig Brothers Trust Daycare**  
City of McKinney  
Planning



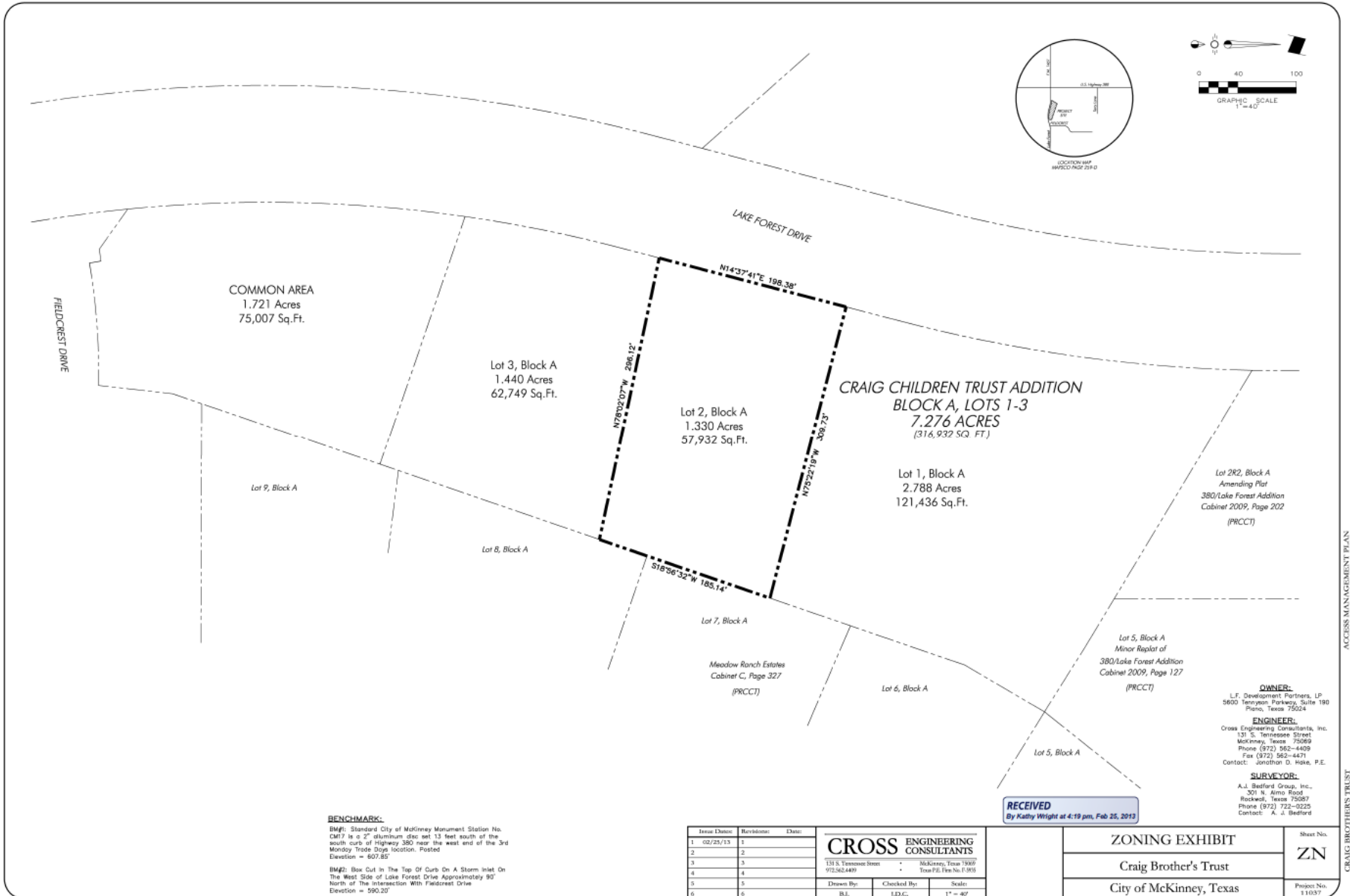
# Location Map



# Aerial Exhibit



# Proposed Zoning Exhibit



**BENCHMARK:**  
 BM#1: Standard City of McKinney Monument Station No. CM7 is a 2" aluminum disc set 13 feet south of the south curb of Highway 380 near the west end of the 3rd Monday Trade Days location. Posted Elevation = 607.85'  
 BM#2: Box Cut in the Top Of Curb On A Storm Inlet On The West Side of Lake Forest Drive Approximately 90' North of the Intersection With Fieldcrest Drive Elevation = 590.20'

Issue Date	Revisions	Drawn
1 02/25/13	1	
2	2	
3	3	
4	4	
5	5	
6	6	

<b>CROSS ENGINEERING CONSULTANTS</b>		
138 S. Tennessee Street	McKinney, Texas 75069	
972.562.4499	Texas P.E. Firm No. F 9835	
Drawn By: BJE	Checked By: J.D.C.	Scale: 1" = 40'

**RECEIVED**  
 By Kathy Wright at 4:19 pm, Feb 25, 2013

<b>ZONING EXHIBIT</b>	Sheet No.
Craig Brother's Trust	<b>ZN</b>
City of McKinney, Texas	Project No. 11037

**OWNER:**  
 L.F. Development Partners, LP  
 5600 Tennesson Parkway, Suite 190  
 Plano, Texas 75024

**ENGINEER:**  
 Cross Engineering Consultants, Inc.  
 131 S. Tennessee Street  
 McKinney, Texas 75069  
 Phone (972) 562-4409  
 Fax (972) 562-4471  
 Contact: Jonathan D. Hoke, P.E.

**SURVEYOR:**  
 A.J. Bedford Group, Inc.  
 301 N. Armo Road  
 Rockwell, Texas 75087  
 Phone (972) 722-5225  
 Contact: A. J. Bedford

ACCESS MANAGEMENT PLAN



# Staff Recommendation

Staff recommends **approval** as outlined in the Staff Report.